

**INDUSTRIAL BUILDINGS AND LAND**



**UNITS 1-13 GRIFF CLARA INDUSTRIAL ESTATE, GRIFF LANE, NUNEATON, CV10 7PP**

73,707 sq ft (6,847.60 sq m)

## Description

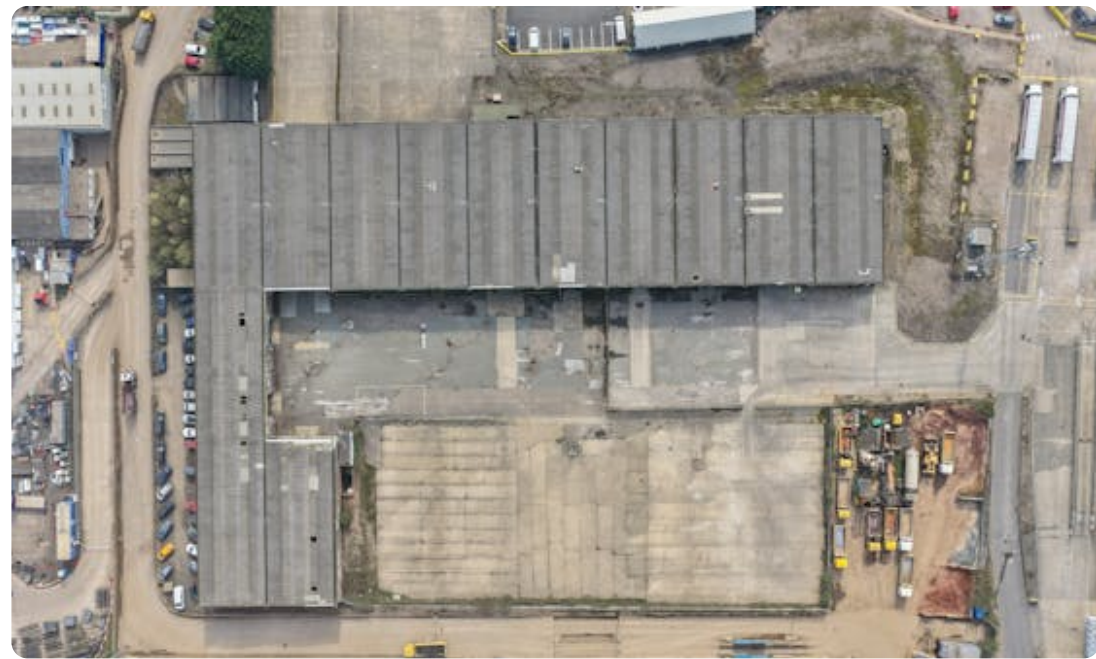
---

The site comprises thirteen units suitable for a variety of industrial uses. The available site totals approximately 4.78 acres, 73,707 sq ft of which is taken up by the buildings. The site has one access via Griff Lane and please note that the road marked by a red line on the main photo will not be accessible.

## Summary

---

- 73,707 sq ft of robust industrial / warehouse space
- 5.4m eaves height
- Extensive hard standing yards
- Secure site



**UNITS 1-13 GRIFF CLARA INDUSTRIAL ESTATE, GRIFF LANE, NUNEATON, CV10 7PP**

73,707 sq ft (6,847.60 sq m)




## Location

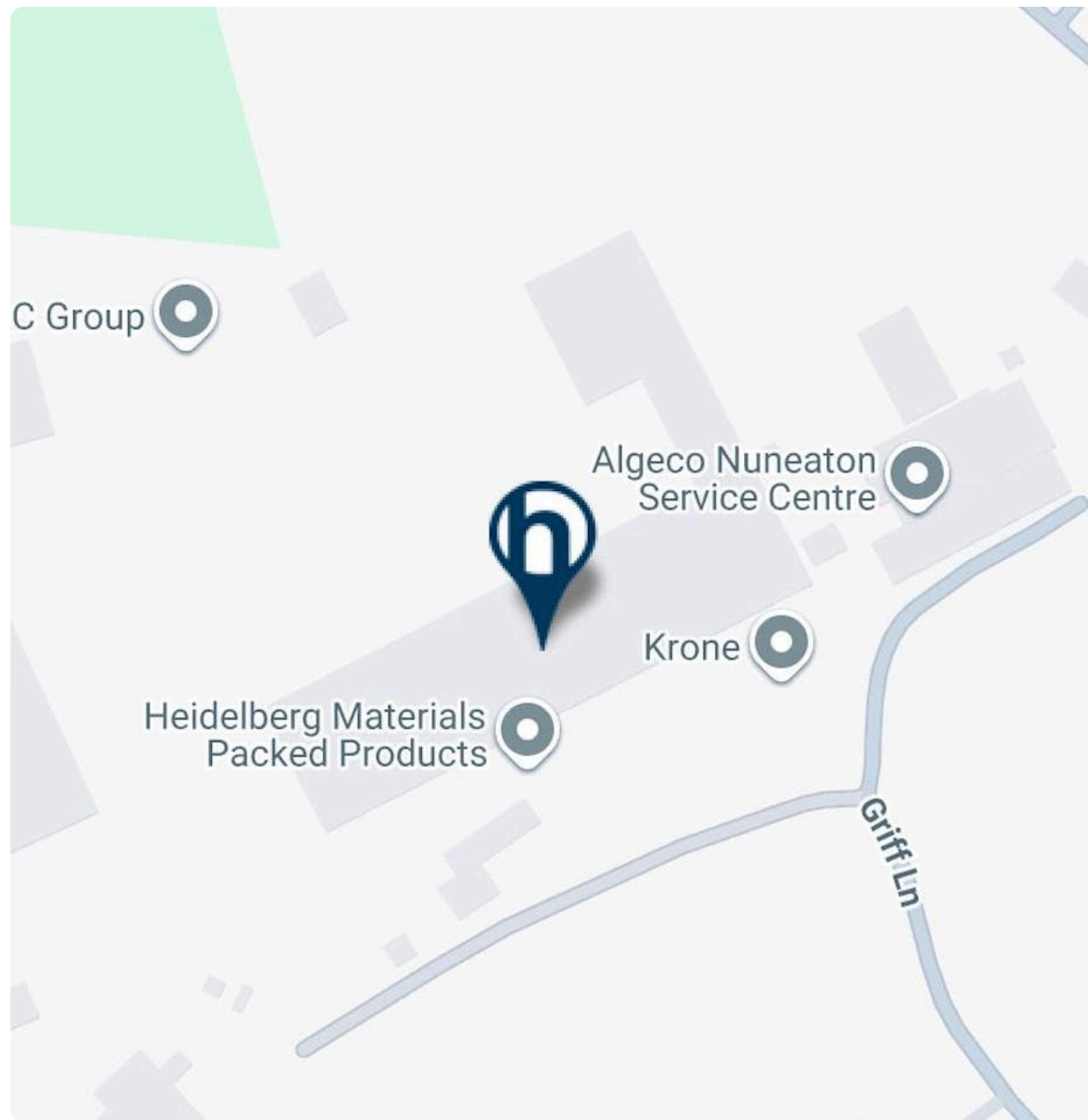
---

The site is located to the west of Bermuda Industrial Estate, which is Nuneaton's main industrial and logistics hub. The site is strategically located off the A444, providing excellent access to Junction 3 of the M6 motorway.

## Connectivity

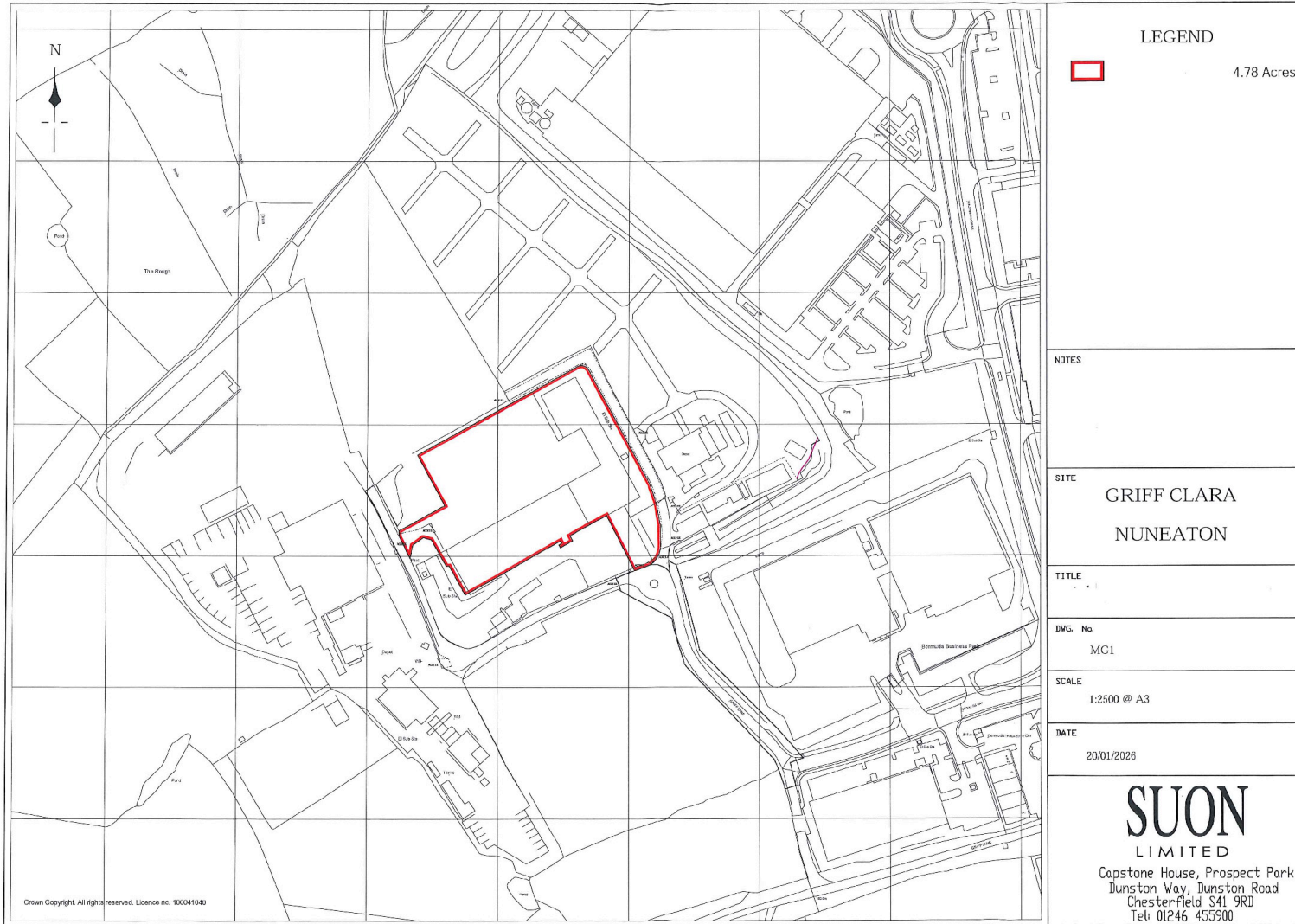
---

-  A444 (0.5 miles)
-  M6 J3 (2.8 miles)
-  Bermuda Park (20 minute walk)



**UNITS 1-13 GRIFF CLARA INDUSTRIAL ESTATE, GRIFF LANE, NUNEATON, CV10 7PP**

73,707 sq ft (6,847.60 sq m)



**UNITS 1-13 GRIFF CLARA INDUSTRIAL ESTATE, GRIFF LANE, NUNEATON, CV10 7PP**

73,707 sq ft (6,847.60 sq m)

## ACCOMMODATION

---

NAME	SQ FT	SQ M	RENT	AVAILABILITY
Building	73,707	6,847.60	roa	Available
Outdoor - Total site area inc buildings	208,216.80	19,343.97	roa	Available
<b>Total</b>	<b>281,923.80</b>	<b>26,191.57</b>		

## TERMS

---

Available by way of a new lease on terms to be agreed.

## VAT

---

Applicable

## LEGAL FEES

---

Each party to bear their own costs

## ANTI MONEY LAUNDERING

---

To comply with our legal responsibilities for AntiMoney Laundering, it is necessary to check all parties involved in this transaction. It is the responsibility for parties on both sides to provide information necessary to complete these checks before the deal is completed.

## VIEWINGS

Strictly by appointment with the agent  
Bromwich Hardy.

## CONTACT



**Mark Booth**  
07497 150 632  
02476 308 900  
mark.booth@bromwichhardy.com



**Ed Bunbury**  
07385 662 520  
02476308900  
ed.bunbury@bromwichhardy.com



**Tom Bromwich**  
07718 037 150  
02476 308 900  
tom.bromwich@bromwichhardy.com



**Jason White** MRICS MCIarb.  
07714 154 437  
0114 279 2806  
jason.white@whiteandcosurveyors.com

## Award winning commercial property advice from the team you can trust

- Commercial Agency Advice
- Sales
- Lettings
- Development Advisory
- Complete Property Management Services
- Professional Services
- Lease Renewals
- Rent Reviews
- Valuation Advice

Read our latest Barometer

