

16 NEW BURLINGTON PLACE w1

AN ESTABLISHED LANDLORD, A PRIME ADDRESS, AN ELEGANT WORKSPACE

2 floors of fully fitted, stylish workspace in West End's premier submarket, Mayfair. 16 New Burlington Place, a building that matches its globally recognised address.

FLOOR	SQ FT	SQ M	AVAILABILITY
6th	4,689	435.62	Coming soon
5th	7,677	713.22	Coming soon



THE RIGHT FIRST IMPRESSION

Your spacious office sits in the heart of the vibrant West End. Sleek spaces are carefully designed, well-equipped and modern. Work productively and flexibly with both formal and informal collaborative workspaces, separate meeting rooms and calming breakout spaces.



A WARM WELCOME TO THE 5TH FLOOR



Indicative fit-out for 5th floor reception

Designed by award-winning architects, Trehearne, your 5th floor office exudes sophistication. No details are spared with high-quality tactile, functional fittings and bright floor-to-ceiling windows boasting tranquil views.

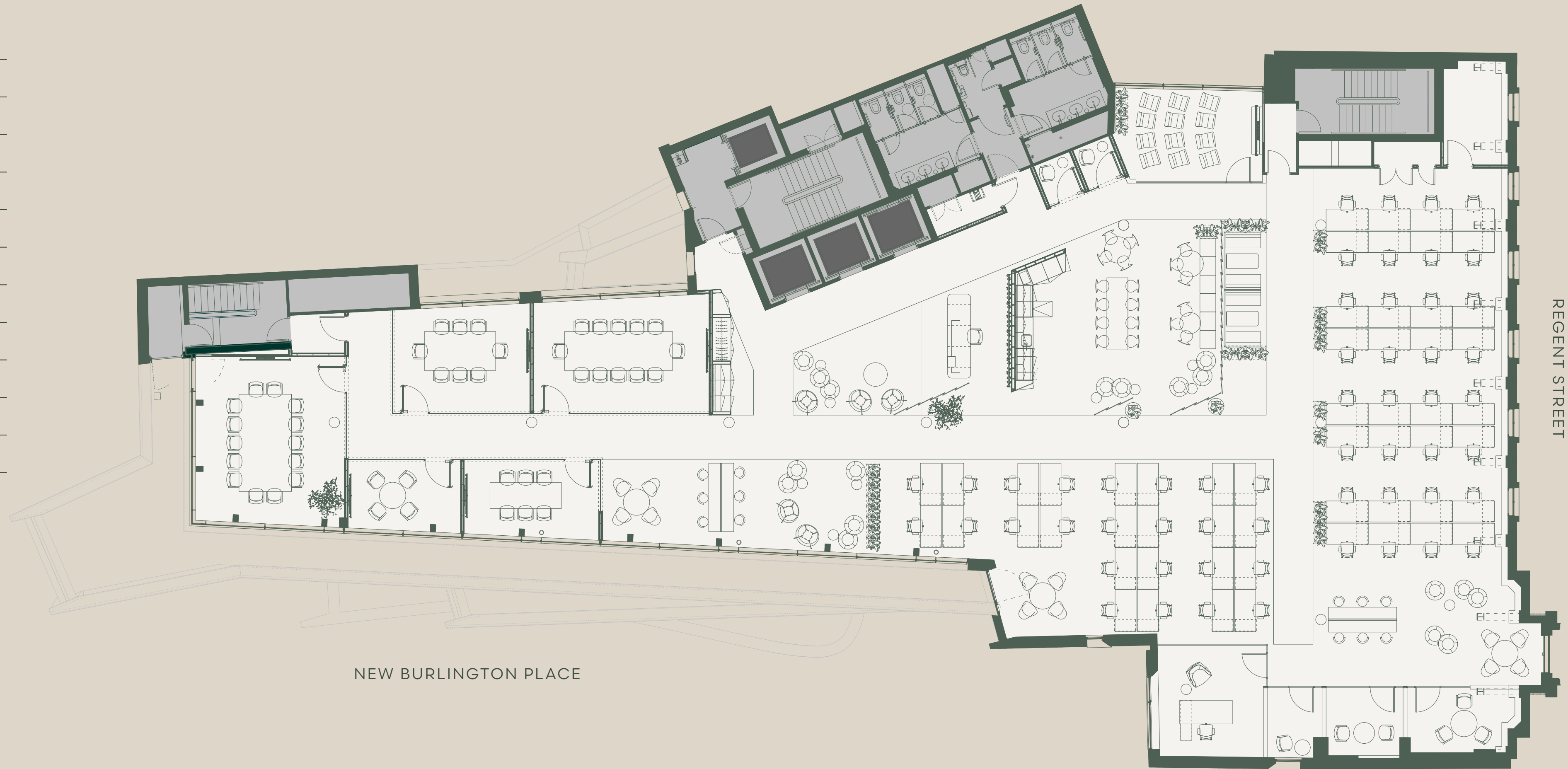


5TH SPACE PLAN



SPACE BREAKDOWN

- 56 x open plan desks
- 2 x 4-person meeting rooms
- 1 x 6-person meeting room
- 1 x 8-person meeting room
- 1 x 12-person meeting room
- 1 x 14-person boardroom
- 1 x private office
- Collaboration & breakout areas
- Lounge
- 2 x tea/coffee points
- Booths



YOUR PLACE OF CALM ON THE 6TH FLOOR



Step onto the 6th floor terrace for breathtaking views from East to West. Your private outdoor oasis awaits, offering a serene space to relax and recharge.

Indicative fit-out for 6th floor reception and private terrace

6TH SPACE PLAN



SPACE BREAKDOWN

36 x open plan desks

2 x 6-person meeting room

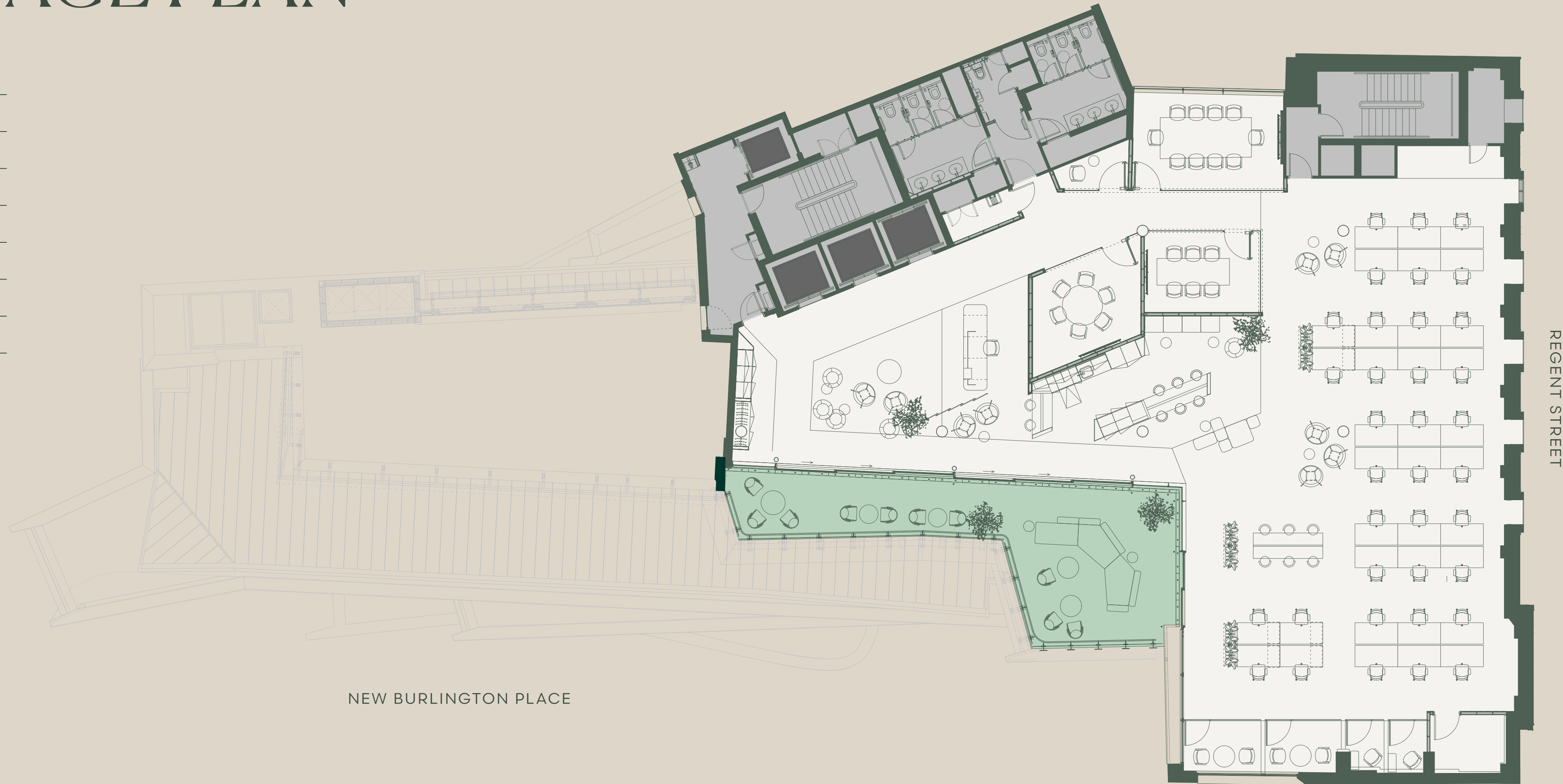
1 x 10-person boardroom

Lounge

Collaboration & breakout areas

Private roof terrace

Booths

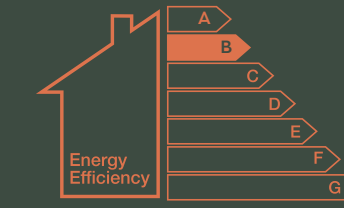


FOR TODAY AND TOMORROW

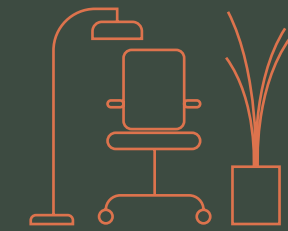
Minimise waste and reduce carbon footprint without compromising on quality. With elegantly refurbished spaces and renovated furniture, 16 New Burlington Place is committed to sustainable living, considering both the individual and the environment.

BREEAM[®]
EXCELLENT

BREEAM
'Excellent' rating



EPC 'B' rating



Ready to go
fully fitted
workspace



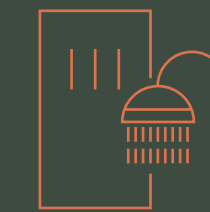
Artus air conditioning
throughout, reducing
energy consumption
and carbon emissions



Super-connected
Fibre optic broadband
throughout



Cycle in
Secure cycle
spaces



Freshen up
Showers, lockers
and WCs



Accessible
3 x passenger lifts



Private 6th
Floor Terrace



ENTERTAIN AND IMPRESS



16 New Burlington Place epitomises culture and convenience. Surround yourself with the arts, shops and green spaces at the Royal Academy of Arts, flagship retail, and London's Royal Parks. Then discover hidden gems at Marylebone village, dine at Mayfair's covetable restaurants, and socialise at trending bars in Soho.



THE WEST END ON YOUR DOORSTEP

● **Restaurants**

- 01 Flat Iron
- 02 Ugly Dumpling
- 03 Polpo Soho
- 04 Dishoom
- 05 NOPI
- 06 Sartoria
- 07 Sketch
- 08 Pollen Street Social
- 09 Ergon Deli
- 10 Frescobaldi
- 11 Sabor
- 12 Gymkhana
- 13 Heddon Street Kitchen
- 14 Sexy Fish
- 15 Hawksmoor
- 16 Mildreds

● **Coffee**

- 01 Everbean
- 02 The Gentlemen Baristas
- 03 Noxy Brothers
- 04 Shot London
- 05 The Service
- 06 Grind

● **Culture**

- 01 Royal Academy of Art
- 02 White Cube
- 03 Photographers' Gallery
- 04 Hauser & Wirth
- 05 Gagosian
- 06 Sadie Coles HQ
- 07 Institute of Contemporary Arts
- 08 The National Gallery

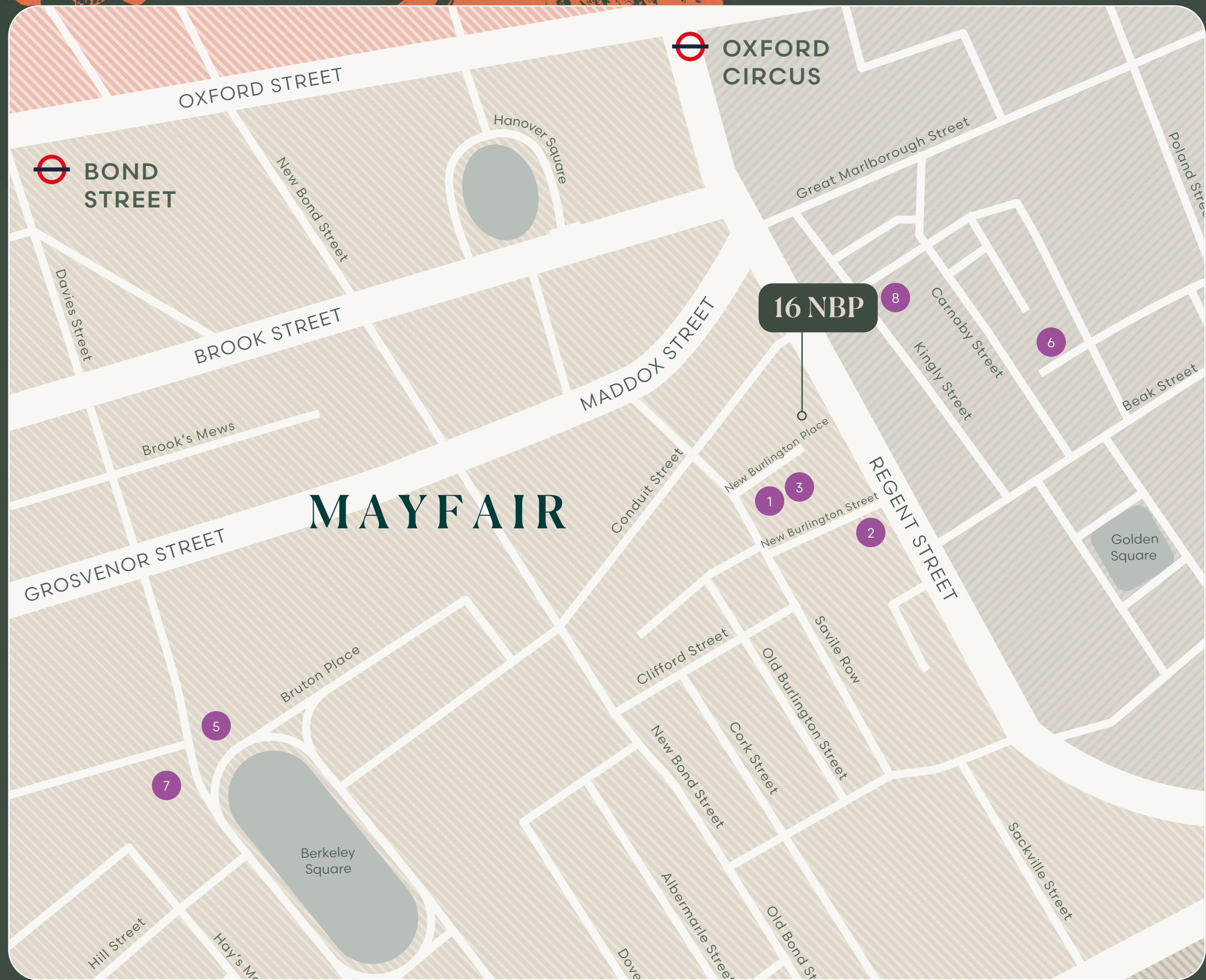
● **Bars**

- 01 The Burlington Arms
- 02 Windmill
- 03 Masons Arms
- 04 Coach & Horses
- 05 The French House
- 06 The Guinea
- 07 Nightjar
- 08 Mr Fogg's Residence
- 09 The Donovan Bar
- 10 Cahoots

● **Mind & Body**

- 01 Barry's
- 02 Third Space
- 03 BuddhaBox
- 04 MoreYoga
- 05 Psyche
- 06 Barrecore
- 07 1Rebel
- 08 Chalk W1





IN GOOD COMPANY

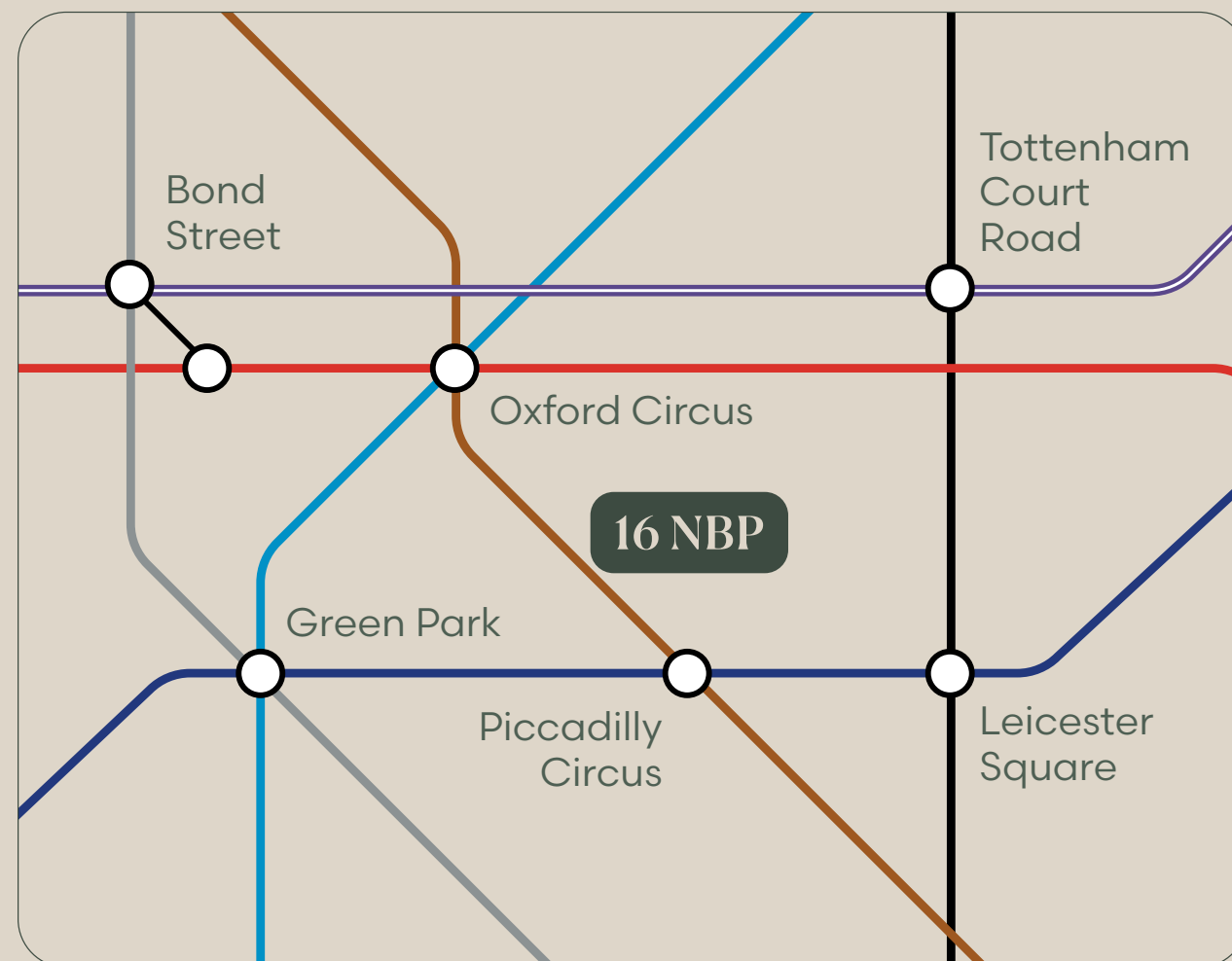
Local Occupiers

- 01 Angelo Gordon
- 02 Ares
- 03 Rokos
- 04 Millenium
- 05 Chanel
- 06 CDPQ / Ivanhoe Cambridge
- 07 Blackstone
- 08 Russell & Bromley



MAKING CONNECTIONS


Oxford Circus, Piccadilly Circus and Green Park Underground stations are just a short walk away. Access the Central, Piccadilly, Bakerloo, Victoria and Jubilee lines, or hop on the new Elizabeth line from Bond Street's Hanover Square entrance.



It's easy to get where you're going from here.

<p> Elizabeth Line (via Bond Street)</p> <ul style="list-style-type: none"> — Paddington 3 minutes — Farringdon 5 minutes — Liverpool Street 8 minutes — Whitechapel 10 minutes — Canary Wharf 12 minutes — Stratford 16 minutes — Woolwich (for City Airport) 22 minutes — Heathrow ✈️ 35 minutes 	<p> Underground (Fastest route from Oxford Circus, Bond Street, Piccadilly Circus or Green Park)</p> <ul style="list-style-type: none"> — Euston 1 minutes — King's Cross St Pancras Int. 4 minutes — Charing Cross 5 minutes — Victoria 5 minutes — Marylebone 5 minutes — Waterloo 7 minutes — London Bridge 7 minutes — Blackfriars 10 minutes — Bank 11 minutes 	<p> Airports (via fastest route)</p> <ul style="list-style-type: none"> — City 29 minutes — Heathrow 35 minutes — Gatwick 40 minutes — Stansted 52 minutes — Luton 55 minutes
--	---	---

Walking times



Oxford circus
6 mins

—

Bond street
6 mins
(Elizabeth Line via Hanover Square)

—

Piccadilly Circus
8 mins

—

Green Park
11 mins

∨

A DIFFERENT WAY OF WORKING

The Crown Estate offers exceptional offices in London's West End designed around the needs of you and your employees. Our centrally located, contemporary workplaces provide your company with elegant and spacious meeting rooms, desk areas, and event spaces.

With a large portfolio of offices we enable customers to grow with us. Our high-spec offices are designed with productivity and collaboration in mind so your staff – and your business – can thrive.

With wellbeing at heart, we offer complimentary services such as fitness classes, amenity discounts, networking opportunities, and community events.

Incoming tenants will also have access to 6 Babmaes Street. 6 Babmaes Street is a space for The Crown Estate's customers offering a multi-functional hybrid of amenity space, workspace and events venue, designed to encourage long term partnership.



WHAT IS THE CROWN ESTATE?

The Crown Estate is a portfolio of properties, land and seabed owned by the British Monarchy but managed as a wholly independent company.

With a focus on sustainability and energy efficiency, our aim is to maintain and enhance the value of the portfolio, thus creating lasting prosperity for the nation. With all net profits being paid directly to the Treasury, The Crown Estate generates millions of pounds each year for the nation's finances.

Workplaces, The Crown Estate's office division, occupies prestigious addresses in central London across Mayfair, St James's and Regents Street.



RX
LONDON

Catherine Lloyd
catherine.lloyd@rx.london
M. 07795 445 833

Jordan Adair
jordan.adair@rx.london
M. 07880 552 710



Andrew Wedderspoon
awedderspoon@savills.com
M. 07807 999 363

Kate Miedzianowska-Sinclair
kate.msinclair@savills.com
M. 07790 923 878

The Agents for themselves and for the vendors or lessors of the property whose agents they are give notice that, (i) these particulars are given without responsibility of The Agents or the Vendors or Lessors as a general outline only, for the guidance of prospective purchasers or tenants, and do not constitute the whole or any part of an offer or contract; (ii) The Agents cannot guarantee the accuracy of any description, dimension, references to condition, necessary permissions for use and occupation and other details contained herein and any prospective purchasers or tenants should not rely on them as statements or representations of fact but must satisfy themselves by inspection or otherwise as to the accuracy of each of them; (iii) no employee of The Agents have any authority to make or give any representation or enter into any contract whatsoever in relation to the property; (iv) VAT may be payable on the purchase price and / or rent, all figures are exclusive of VAT, intending purchasers or lessees must satisfy themselves as to the applicable VAT position, if necessary by taking appropriate professional advice; (v) The Joint Agents will not be liable, in negligence or otherwise, for any loss arising from the use of these particulars. October 2024.

Designed and produced by Graphicks | 020 3435 6952 | Graphicks.co.uk

**THE CROWN
ESTATE**