

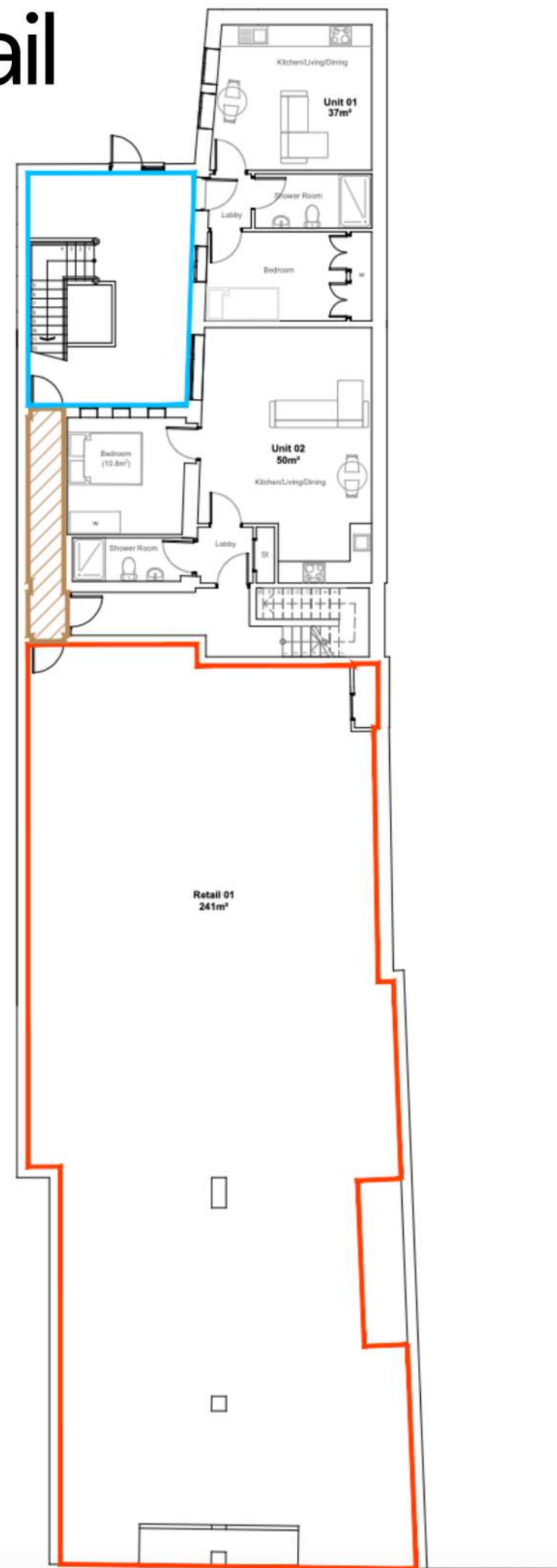
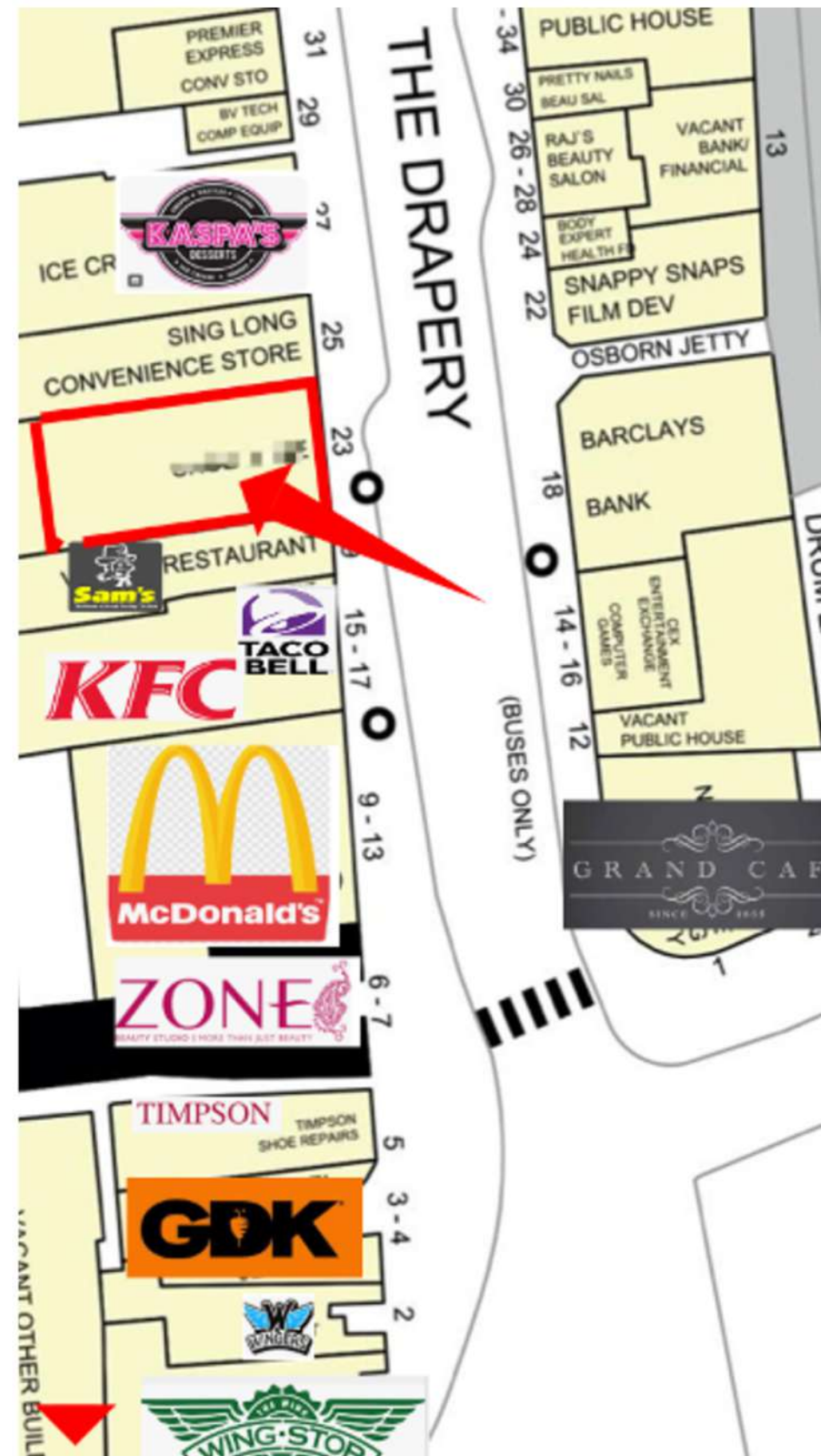


FOR SALE / TO LET

- Double fronted town centre retail unit
- 241 SQ M/ 2,594 SQ FT GIA
- High footfall area
- Adjacent to numerous national brands including McDonalds Wingstop KFC GDK Taco Bell and Kaspas

21-23 The Drapery Northampton NN1 2ET

Town Centre F&B / Retail Opportunity



LOCATION

Prime Town Centre location east side of the Drapery among numerous national fast food brands see annotated goad. Close to bus station and new 300 unit Zone student scheme

DESCRIPTION

This double fronted GF retail unit edged red on plan with access to rear yard / binstorage and right to install an extract STP

FLOOR AREAS

241 Sq M / 2,594 SQ FT

BUSINESS RATES

To be assessed

EPC

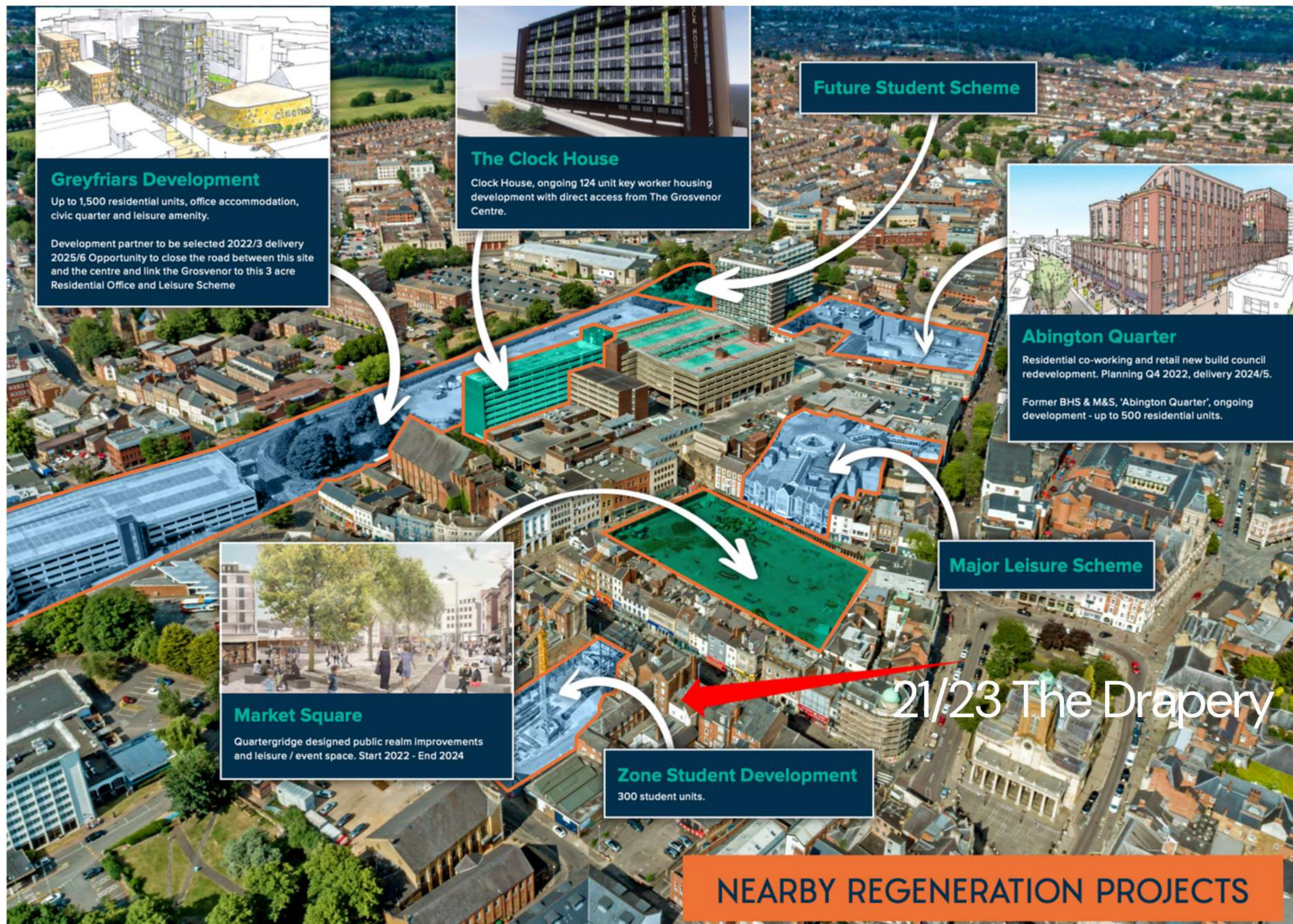
To be assessed

RENT

New FRI Lease £60,000 pa

FOR SALE

999 yr lease at a peppercorn POA



REGENERATION and DEVELOPMENT

The property is surrounded by numerous development projects such as Zone Students 300 unit Drapery scheme.

Contact

Office 01604 604050

Simon Chown

spc@chowncommercial.co.uk

07958471660

Stephen Chown

src@chowncommercial.co.uk

07739808009

