

Compton



Old Street
40-56 City Road
EC1Y 2AN

Prime retail units for sale with excellent street frontage, high foot traffic, and great visibility.

For Sale
1,047 to 3,038 ft²

020 7101 2020
compton.london

Compton

Old Street
40-56 City Road
EC1Y 2AN

Prime retail units for sale with excellent street frontage, high foot traffic, and great visibility.

For Sale
1,047 to 3,038 ft²



Location

Old Street is a vibrant, well-connected area in the heart of London, offering excellent transport links with the Northern Line and Overground nearby. The neighborhood is bustling with trendy cafes, restaurants, and creative spaces, making it an ideal location for businesses looking to thrive in a dynamic and lively environment.

Compton

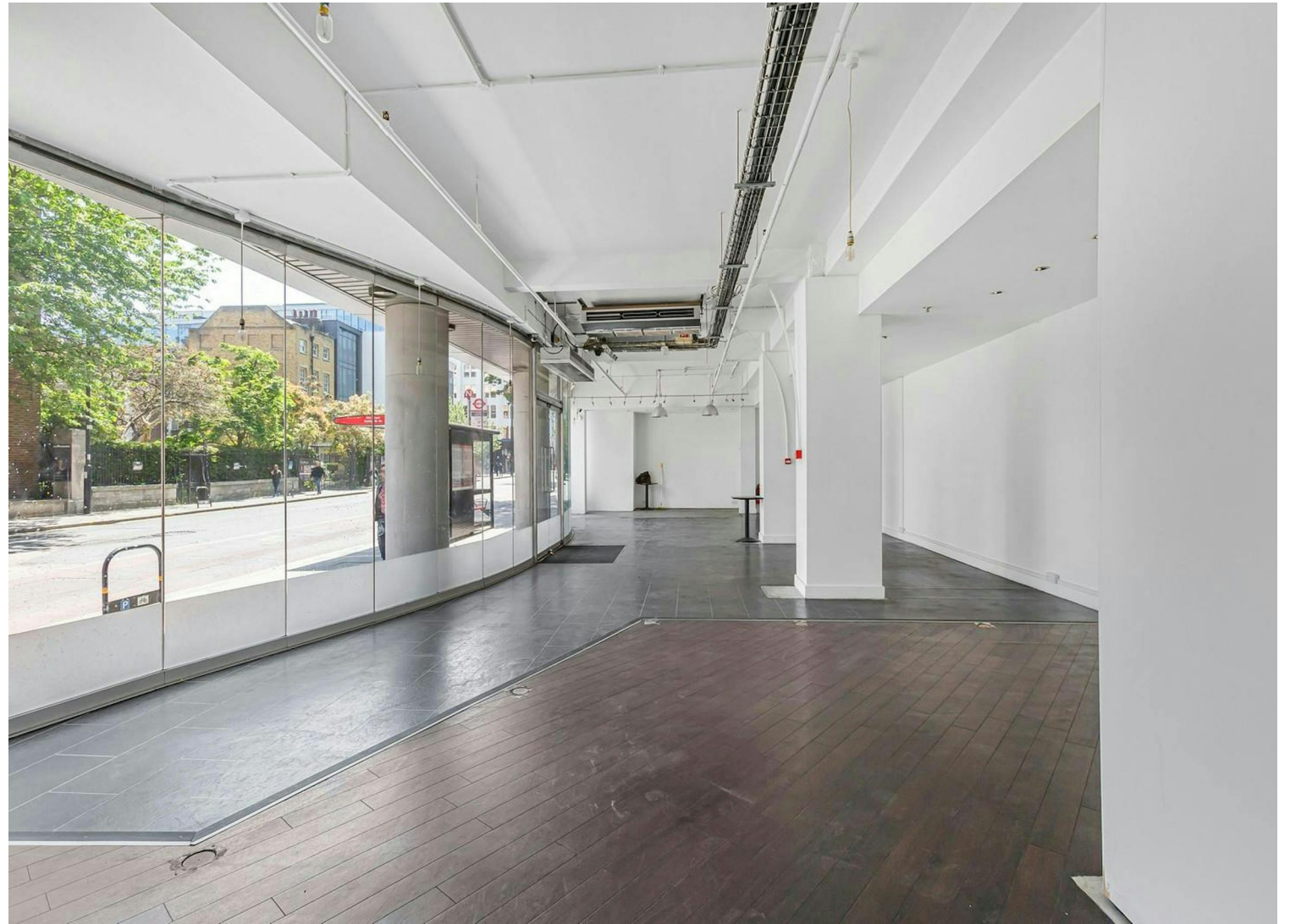
Old Street

40-56 City Road
EC1Y 2AN

Prime retail units for sale with excellent street frontage, high foot traffic, and great visibility.

For Sale

1,047 to 3,038 ft²



Compton

Old Street
40-56 City Road
EC1Y 2AN

Prime retail units for sale with excellent street frontage, high foot traffic, and great visibility.

For Sale
1,047 to 3,038 ft²

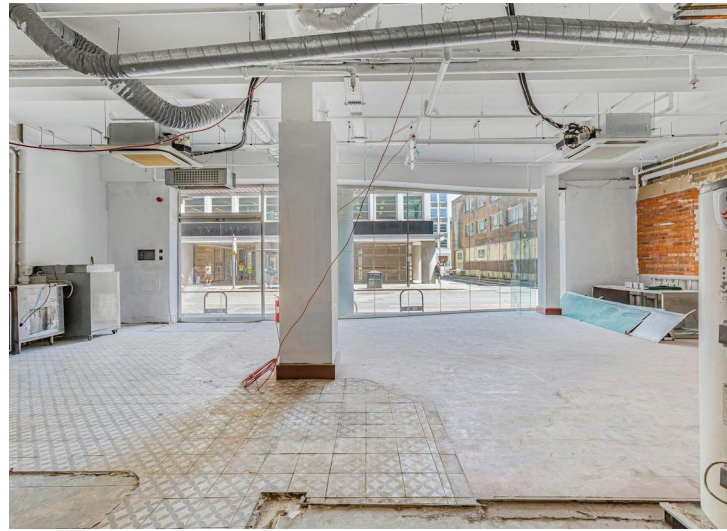


Compton

Old Street
40-56 City Road
EC1Y 2AN

Prime retail units for sale with excellent street frontage, high foot traffic, and great visibility.

For Sale
1,047 to 3,038 ft²

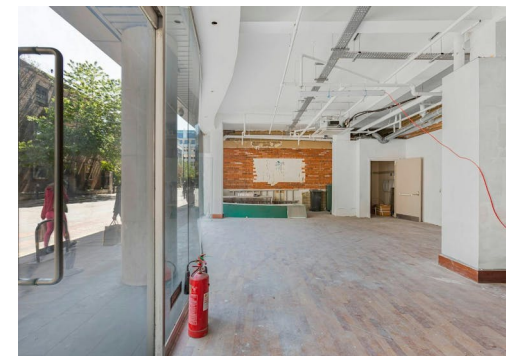
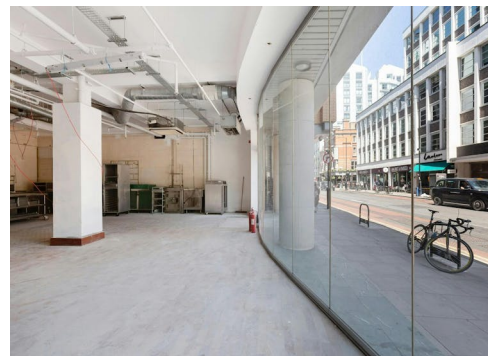
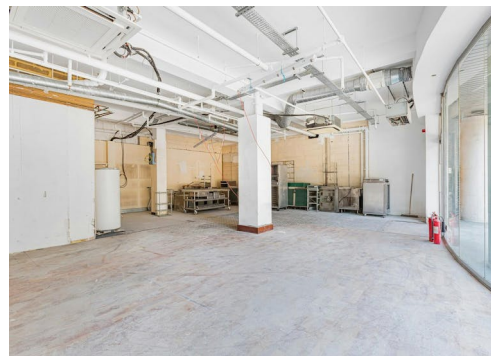
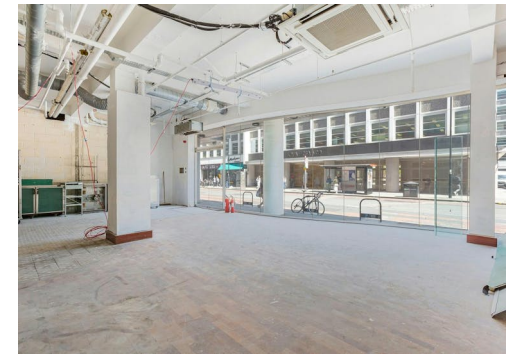
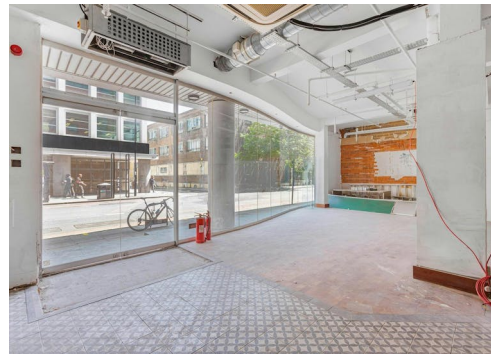
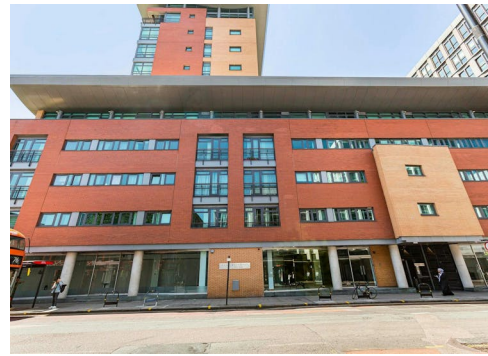
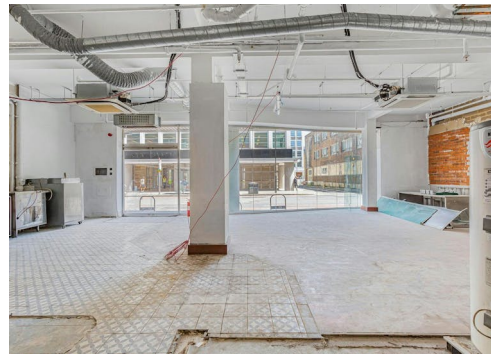


Compton

Old Street
40-56 City Road
EC1Y 2AN

Prime retail units for sale with excellent street frontage, high foot traffic, and great visibility.

For Sale
1,047 to 3,038 ft²



Compton

Old Street

40-56 City Road
EC1Y 2AN

Prime retail units for sale with excellent street frontage, high foot traffic, and great visibility.

For Sale

1,047 to 3,038 ft²

Amenities

- Excellent natural light
- Showroom frontage
- Very close to Old Street station
- Air-conditioning

Description

Unit A offers a Ground and Lower Ground showroom space for sale, which has been newly refurbished to a CAT A condition, ready for a custom fit out.

Unit B is offered in Shell and Core condition, providing flexibility for use and fit out, allowing you to tailor the space to your needs.

Both units boast excellent street frontage and natural light, situated in a bustling area with high foot traffic - perfect for attracting attention to your business.

Compton

Old Street

40-56 City Road
EC1Y 2AN

Prime retail units for sale with excellent street frontage, high foot traffic, and great visibility.

For Sale

1,047 to 3,038 ft²

Content

[View on Website](#)



Compton

Old Street

40-56 City Road
EC1Y 2AN

Prime retail units for sale with excellent street frontage, high foot traffic, and great visibility.

For Sale

1,047 to 3,038 ft²

Floor Areas & Outgoings

The accommodation comprises the following areas:

Name	Size	sq ft	Price	Rates Payable (sq ft)	Service charge	Availability
Unit - A - Ground (1,453 Sq Ft) & Lower Ground (538 Sq Ft)	1,991 sq ft	1,991	£1,050,000	£15.22	£1.58 /sq ft	Available
Unit - B - Ground	1,047 sq ft	1,047	£825,000	On Application	On Application	Available
Unit - C - Ground & Lower Ground	1,775 sq ft	1,775	£650,000	£16	£1.55 /sq ft	Under Offer
Total		4,813		£15.61		

Compton

Contact Us

All appointments to view must be arranged via sole agents, Compton, through —

Elliott Stern
es@compton.london
07834 918700

Alex Sugar
as@compton.london
07585 793 379

