



Location

30 Fenchurch Street is a landmark office development located in the heart of EC3.

The building sits on an island site in a prime city location. IT benefits from excellent transport connections with Fenchurch Street, Monument, Cannon Street, Bank, Liverpool Street and London Bridge all within close proximity, allowing easy access across London.

Floor	Size (sq ft)	Guide Rent (£ psf)	Estimated Business Rates (£ psf)	Service Charge (£ psf)	Timing
14 th	13,594	TBC	c.£22.50	c.£10.00	CATA
Pt 8 th	7,319	£67.50	c.£22.50	c.£10.00	Available
Total	20,913				

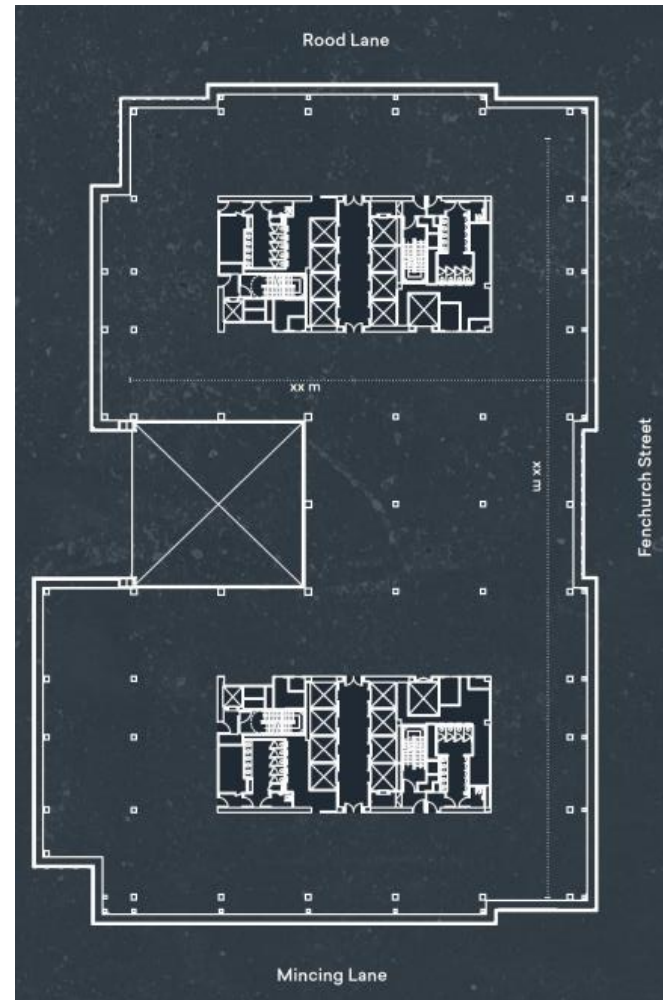
Specification

- Newly Refurbished
- VAV air conditioning
- Raised access floor with overall void of 200mm
- 2.7m floor to ceiling height
- Prestigious Reception
- Striking central atrium
- 16 x 21 passenger lifts
- Cycling provisions
- Car Parking
- Provision for standby generation



Dan Roberts
Tel: 020 7710 7958
M: 07801 143 909
E: danr@bh2.co.uk

Jack Beeby
Tel: 020 7710 7969
M: 07841 802 097
E: jackb@bh2.co.uk



Dan Roberts
Tel: 020 7710 7958
M: 07801 143 909
E: danr@bh2.co.uk

Jack Beeby
Tel: 020 7710 7969
M: 07841 802 097
E: jackb@bh2.co.uk