

Office and medical floor
space available

NEWTON
PERKINS



21 Garlick Hill, London, EC4V
2AU

918 TO 22,284 SQ FT

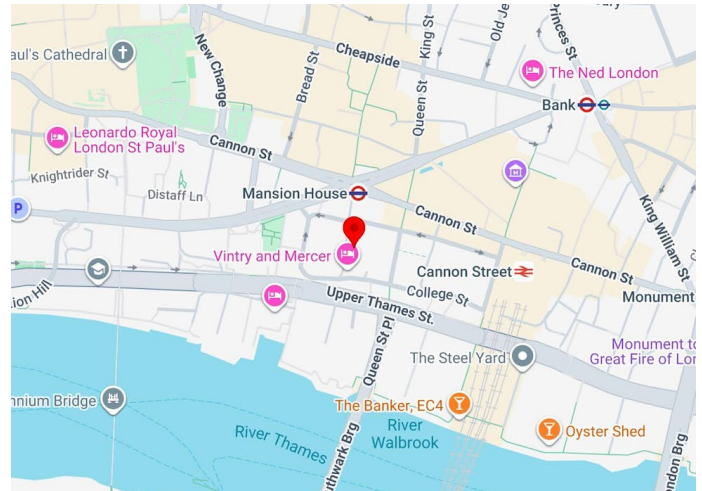
TO LET

- Excellent natural light
- Raised floors
- Air conditioning
- 2x10 person passenger lifts
- 24 hour access
- Part ground and lower ground floors available for medical use

+44 (0) 20 7456 0700
newtonperkins.com

Office and medical floor space available

NEWTON PERKINS



Summary

Available Size	918 to 22,284 sq ft / 85.28 to 2,070.25 sq m
Rent	Rent on application
Rates Payable	£20 per sq ft
Service Charge	TBC
EPC	Upon enquiry

Description

21 Garlick Hill is a late-1980s office building offering 22,284 sq ft of office space over seven floors. Its upper floors provide column-free, naturally lit floorplates of approximately 3,350 sq ft, with access via a ground-floor reception and a central core containing lifts and WCs.

Location

The building is located on the East side of Garlick Hill 40 metres south of Mansion House station (Circle and District lines). Bank (Central, Northern, DLR, Waterloo and City lines), Monument and Cannon Street underground (District and Circle Lines) and Cannon Street overground stations are within a short walk.

Accommodation

The accommodation comprises the following areas:

Floor/Unit	sq ft	sq m	Availability
5th	2,428	225.57	Available
4th	3,272	303.98	Available
3rd	3,351	311.32	Available
2nd	3,356	311.78	Available
1st	3,369	312.99	Available
Ground	1,912	177.63	Available
Ground	918	85.28	Available
Ground	347	32.24	Available
Lower Ground	3,331	309.46	Available
Total	22,284	2,070.25	

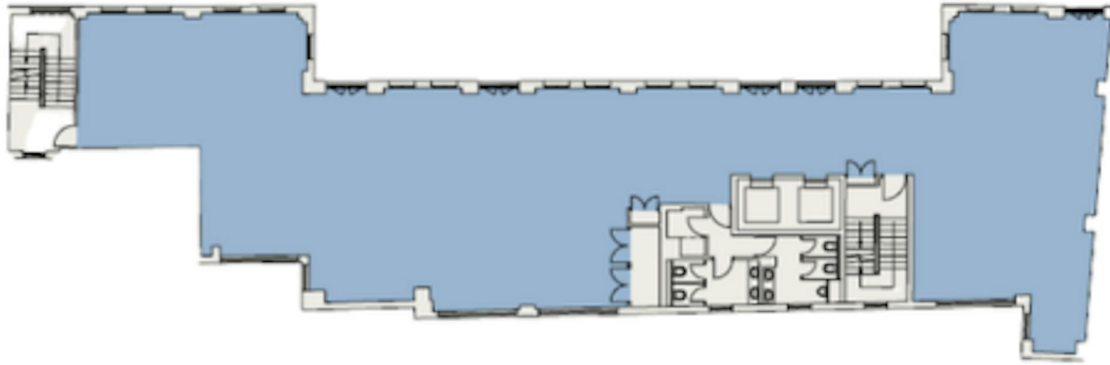
*Part ground and lower ground floors available for medical use

Terms

For a term by arrangement.

Sophie Maytum
020 7456 0707 | 07884 602 870
sm@newtonperkins.com

Leo Gough
07546 695 724
lg@newtonperkins.com



+44 (0) 20 7456 0700
newtonperkins.com

