

VICTORIA SQUARE HOUSE

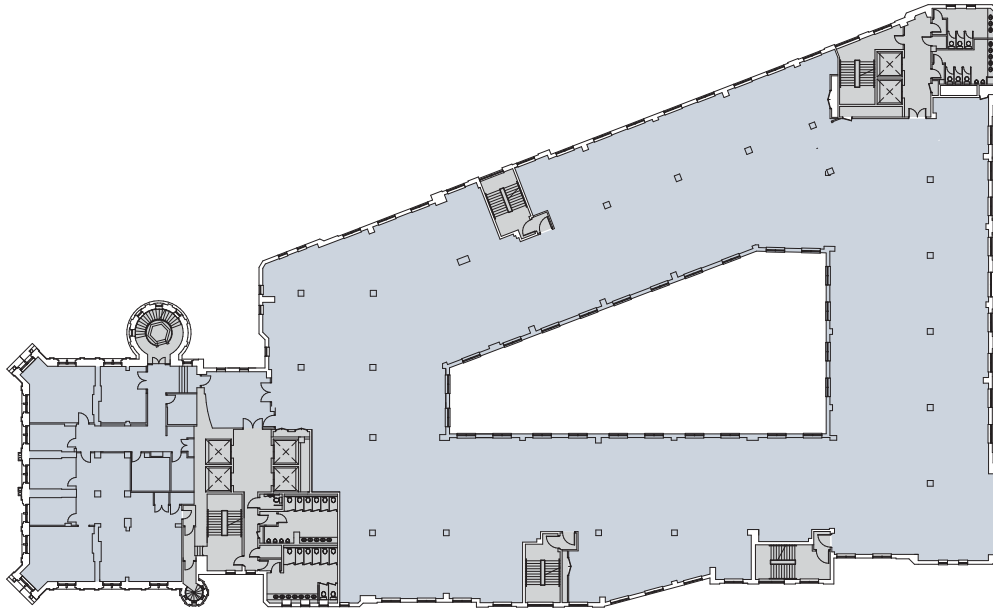
BIRMINGHAM B2 4DG

2ND FLOOR OFFICES TO LET

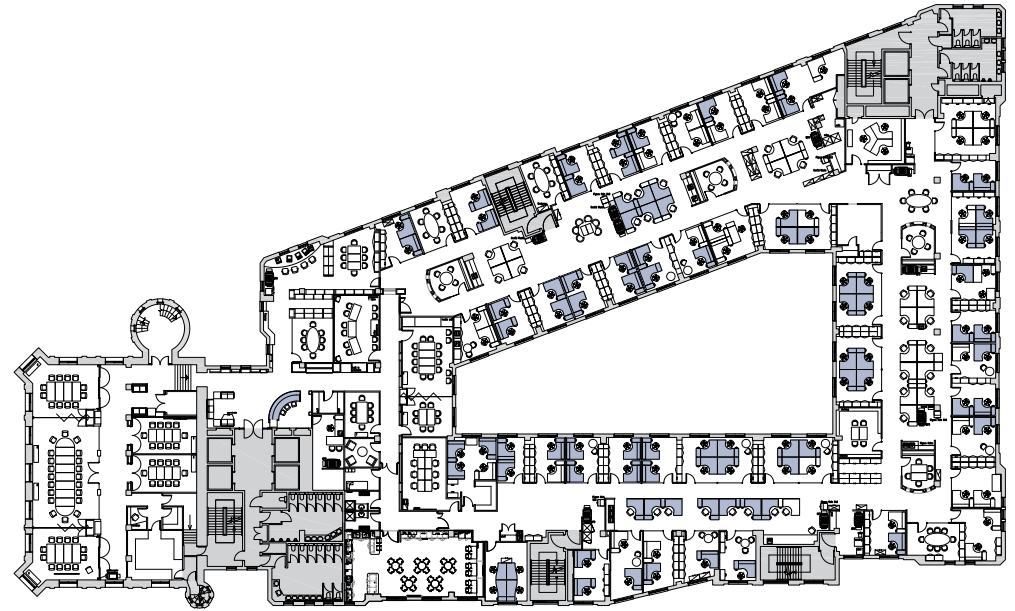
27,838 SQ FT

SMALLER SUITES AVAILABLE ON REQUEST

PARTIALLY FITTED OR OPEN PLAN
CENTRAL LOCATION • NEXT TO NEW STREET STATION • FLEXIBLE & COMPETITIVE TERMS



Second Floor - up to 27,838 SQ FT



Existing Layout (NB: some items of furniture missing / in used condition)

To arrange a viewing or for more information:

NEWMARK

George Jennings

+44 (0)7568 326786 • george.jennings@nmrk.com

Newmark hereby gives notice that the information provided (either for itself, for any joint agents or for the vendors lessors of this property whose agent Newmark is in this brochure is provided on the following conditions: (1) The particulars are set out as a general outline only, for the guidance of intending purchasers and/or lessees and do not constitute an offer or contract, or part of an offer or contract. (2) All descriptions, dimensions and references to this property's condition and any necessary permission for use and occupation, and any other relevant details, are given in good faith and are believed to be correct. However, any intending purchasers or tenants should not rely on them as statements or representations of fact but satisfy themselves of their correctness by inspection or otherwise. (3) No person in the employment of Newmark, or any joint agents, has any authority to make or give any representation or warranty whatsoever in relation to the property or properties in this brochure. (4) All prices quoted are exclusive of VAT. (5) Newmark shall have no liability whatsoever in relation to any documents contained within the brochure or any elements of the brochure which were prepared solely by third parties, and not by Newmark. Crafted by Core. 0121 232 5000. core-marketing.co.uk. April 2025.