

USP.

5 Maidstone Buildings
Mews
London SE1 1GN

Office For Sale or To Let In
Stunning Private Mews

2,563 SQ FT

usp.london
020 3757 7777





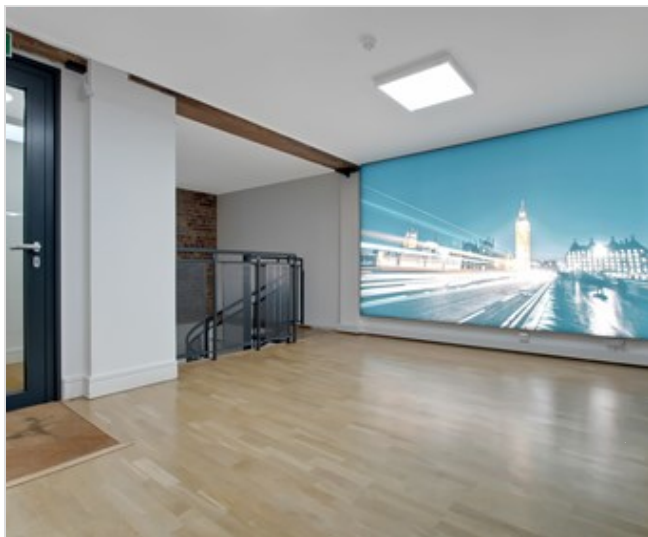
Description

Office For Sale or To Let In Stunning Private Mews

Maidstone Buildings Mews is a charming and exceptionally attractive private gated mews. Positioned immediately off Borough High Street it comprises former Victorian warehouses converted into a mix of offices and apartments and offers an oasis of calm off the bustling high street.

Recently refurbished, this office space spans the ground and lower ground floors. The ground level includes a welcoming reception area, a private meeting room, and WC with a shower. A spiral staircase leads to the lower ground floor, which opens into a spacious open-plan area, complemented by additional private meeting rooms, a fully equipped open-plan kitchen, a second W.C, and ample storage space.

The office is available to purchase on a long leasehold basis with offers invited in excess of £1,000,000 + VAT, reflecting a very competitive per sq ft price of just £390 per sq ft. It is also offered to rent at £70,000 per annum exclusive of VAT.





5 Maidstone Buildings Mews,
London, SE1 1GN

Accommodation

Floor	Availability	Area (sq ft)	Rent (psf)	Price
Lower Ground	Available	1,997	£27.30	POA
Ground	Available	566	£27.30	POA
TOTAL		2,563		

Amenities

Air Cooling cassettes

Wood flooring

Meeting Rooms/private offices

Own WCs and shower

On-site concierge

Wall mounted electric heating

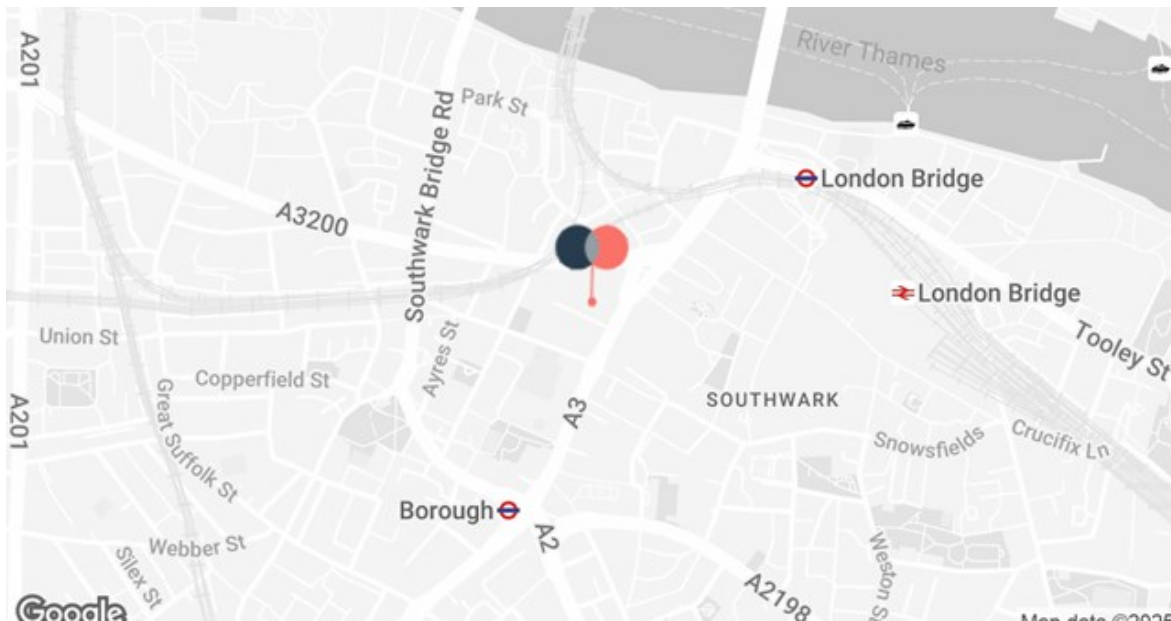
Exposed brickwork

Open plan kitchen

Recessed Lighting

Secure gated private mews





Location

Maidstone Buildings Mews runs off the west side of Borough High Street, approximately 50 metres north of the junction with Union Street.

Borough Market is within a two minute walk and offers an outstanding section of restaurants, street food and market produce.

Borough High Street has a large variety shops as well as excellent eating and drinking options.

London Bridge Station (Mainline, Jubilee and Northern Lines) is approximately 4 minutes walk with Borough station (Northern line) approximately 5 minutes away.

5 Maidstone Buildings Mews,
London, SE1 1GN

Further Information

For sale on 999 year lease from 2002, or to rent on new lease for term by arrangement

Rent/Price

£70,000 per annum (£27.30 per sq ft) / Offers In Excess Of £1,000,000 + VAT

Service Charge

£4.70 per sq ft

Rates

£10.00 per sq ft approx

Max Humphreys
USP London
07718 484284
max@usp.london

Rupert Cowling
USP London
07736 880317
rupert@usp.london

Anti-Money Laundering

To comply with our legal responsibilities for Anti-Money Laundering, it is necessary to check all parties involved in this transaction. It is the responsibility for parties on both sides to provide information necessary to complete these checks before the deal is completed. Information required will include:

- Corporate structure and ownership details;
- Identification and verification of ultimate beneficial owners;
- Satisfactory proof of the source of funds for the Buyers/ funders/lessee

Subject to contract. USP for themselves and the vendor of this property give notice that these particulars do not form, or form part of, any offer or contract. They are intended to give fair description of the property and whilst every effort has been made to ensure their accuracy this cannot be guaranteed. Any intending purchaser must therefore satisfy themselves by inspection or otherwise. Neither USP, nor any of its employees, has any authority to make or give any further representations or warranty whatsoever in relation to this property. All prices and rents quoted are net of vat. Created on 01/10/2025