

YARNWICKE



Work-life reinvented

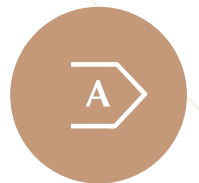
A building by Riverside Capital

# Yarnwicke 119–121 Cannon Street Two Ready to Work floors available

Introducing two next generation 8,555 ft<sup>2</sup> Ready to Work floors at Yarnwicke by Riverside Capital. A brand new space with interiors designed by Barr Gazettas.



BREEAM Excellent



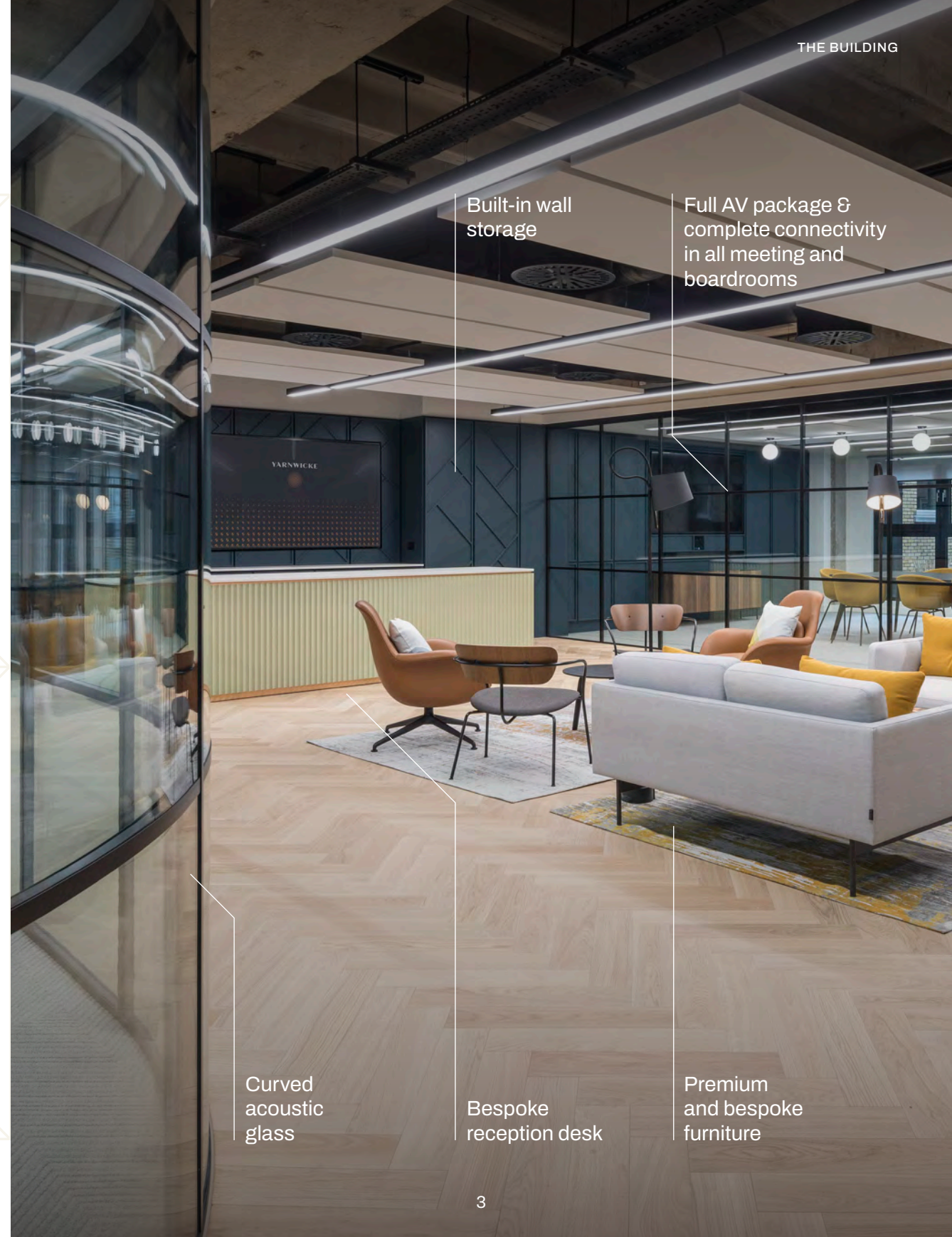
EPC A rating

Boardroom furnishings

# Arrive in style



Reception desk detailing



Built-in wall storage

Full AV package & complete connectivity in all meeting and boardrooms

Curved acoustic glass

Bespoke reception desk

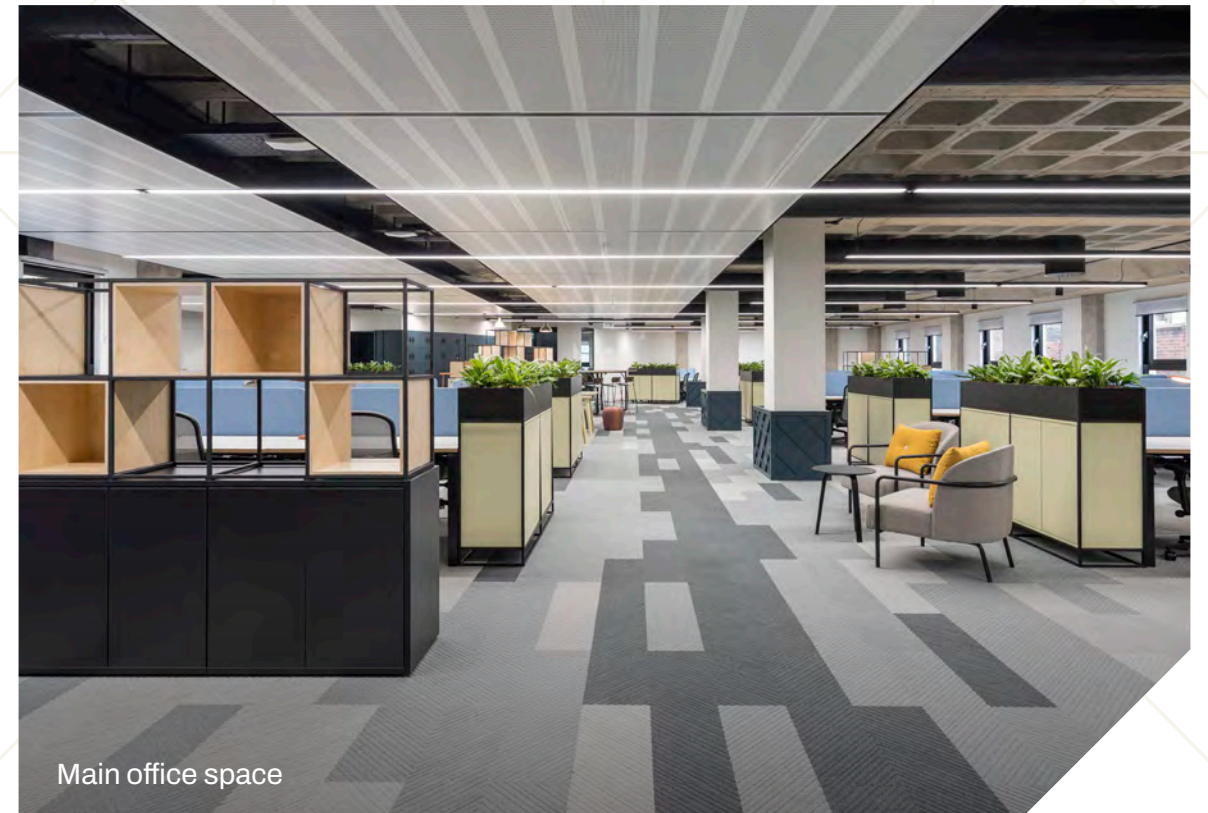
Premium and bespoke furniture



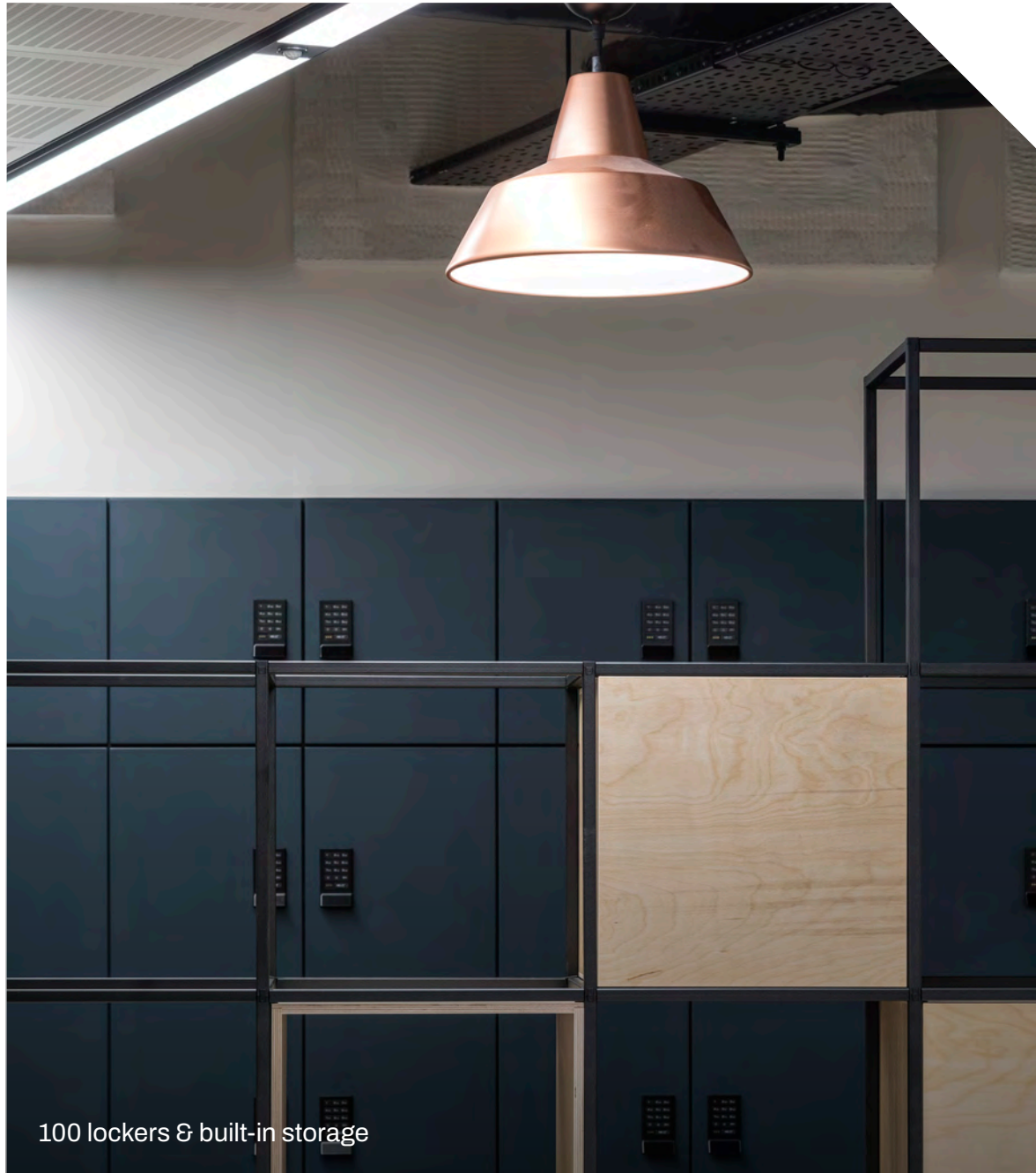
The snug

## Workspace reinvented

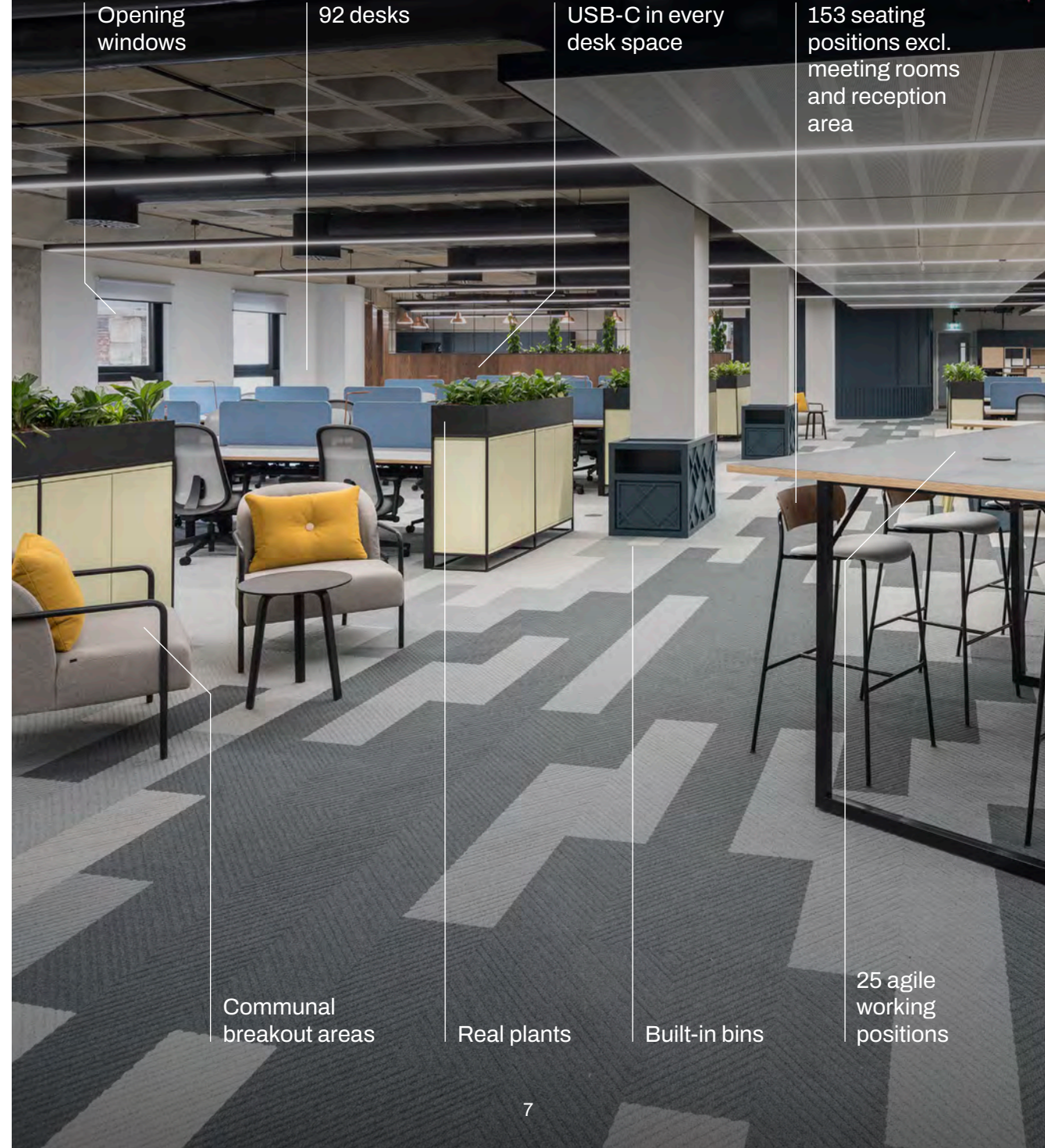
Designed to inspire, every surface and fixture has been specified with the finest quality finishes, all with functionality in mind. Open-plan workspaces meet collaborative corners, all boosted with super-fast and customisable connectivity to offer the functionality required for any business to flourish.



Main office space



100 lockers & built-in storage



Opening windows

92 desks

USB-C in every desk space

153 seating positions excl. meeting rooms and reception area

Communal breakout areas

Real plants

Built-in bins

25 agile working positions



View from communal roof v

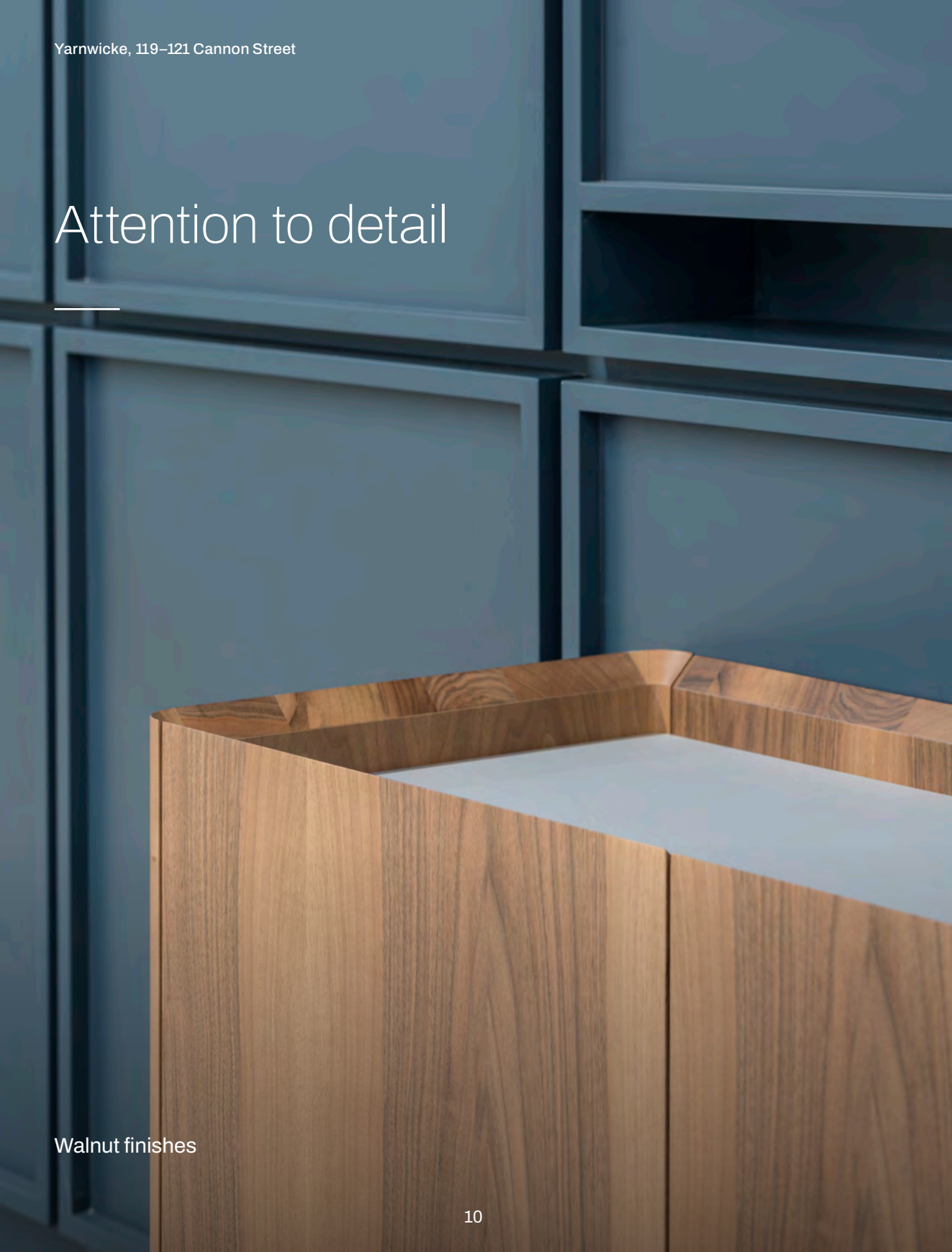
## A breath of fresh air



Indicative roof terrace

## Attention to detail

---



Walnut finishes



Board & meeting room light fixtures



2x Fully appointed bespoke kitchens with Miele appliances, Zip taps and stone worktops



The Snug



Breakout area with walnut finishes and USB-C sockets

# Making plans



# The extra mile in the square mile



Communal roof terraces



Opening windows on all floors



Passenger lifts



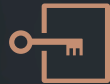
Bike storage with separate entrance



24 hours security



Floor-by-floor air conditioning



Secure lockers



Concierge during working hours



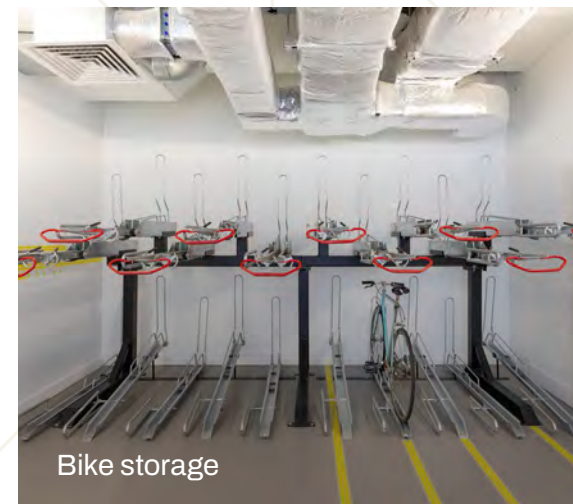
Air quality testing



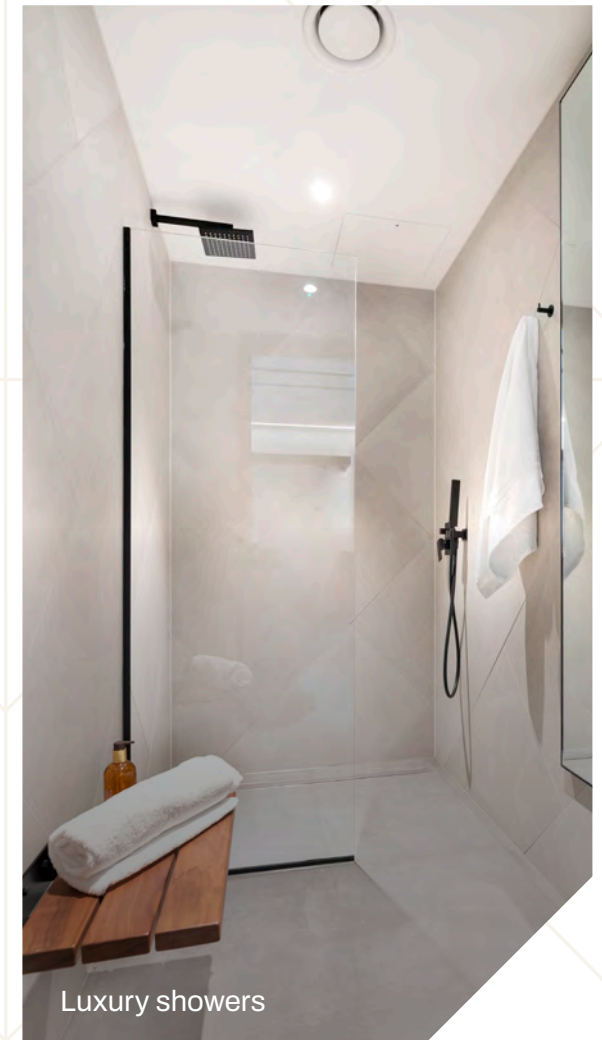
Super-fast wifi throughout



View of changing room



Bike storage



Luxury showers

Yarnwicke  
119–121 Cannon Street  
EC4, London

1 min walk  
from Cannon  
Street station

1 min walk  
from new Bank  
station entrance



# YARNWICKE



---

## KONTOR

**Paul Gold**  
paul@kontor.com  
+44 (0)7779 100 875

**Ben Orchard-Smith**  
ben@kontor.com  
+44 (0)7557 988 115

**Nick Hill**  
nick@kontor.com  
+44 (0)7786 516 085

---

Whilst the statements contained in these particulars are given in good faith and as a general guide to the property they do not form any part of an offer or contract. Neither the lessor, or any person in the employment of the Agent/s has any authority to make or give any representation or warranty whatsoever in relation to this property. Interested parties must satisfy themselves by inspection or otherwise as to the correctness of these particulars.

Brochure design by L&Co

A building by **Riverside Capital**

**Riverside**  
**CAPITAL**

THE  
PROPERTY  
INVESTMENT  
PEOPLE