

Commercial Office Space

654 – 1,310 sq. ft.

Open plan office space available

TO LET

New House, 67-68 Hatton Garden, Clerkenwell, EC1N 8JY



LOCATION

The building is situated at the north end of Hatton Garden, close to the junction with Clerkenwell Road. Hatton Garden is well positioned to provide easy access to The West End, The City and Clerkenwell. There is an excellent choice of bars, shopping and recreational facilities which can be found nearby along Hatton Garden and Leather Lane.

TRANSPORT

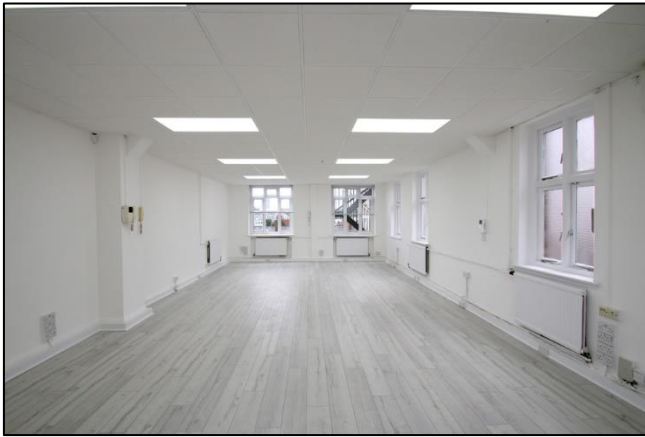
Farringdon (Circle, Elizabeth, Hammersmith & City and Metropolitan lines and National Rail)

Chancery Lane (Central line)

Barbican (Circle, Hammersmith & City and Metropolitan lines)

Various bus routes

Santander Cycles



DESCRIPTION

These open plan offices are situated within an attractive period building and benefit from good natural daylight, with communal tea points and WC's.

The offices are in the heart of the creative quarter and would suit a variety of occupiers such as media, technology or design companies.

Available for immediate occupation.

AMENITIES

- Passenger lift
- Comfort cooling
- Kitchenettes
- Demised WCs
- Entryphone system
- Double glazed windows
- Perimeter trunking

Floor	Size <i>Sq. ft.</i>	Rent <i>Per sq. ft.</i>	Rates <i>Per sq. ft.</i>	Service Charge <i>Per sq. ft.</i>	Total Occupational Costs <i>Per annum</i>
Unit 69 / 90	1,080	£27.78	£14.79	£12.64	£59,620.86
Unit 64 / 66	654	£29.05	£16.02	£12.64	£37,746.56
Unit 11 & 12	1,310	£25.00	£16.19	£14.22	£72,579.93

LEASE

Short form leases available for a term by arrangement.

PLEASE CONTACT

ANTON PAGE 020 7336 1313

Alfie Newton
anewton@antonpage.com

Harrison Turner
hturner@antonpage.com