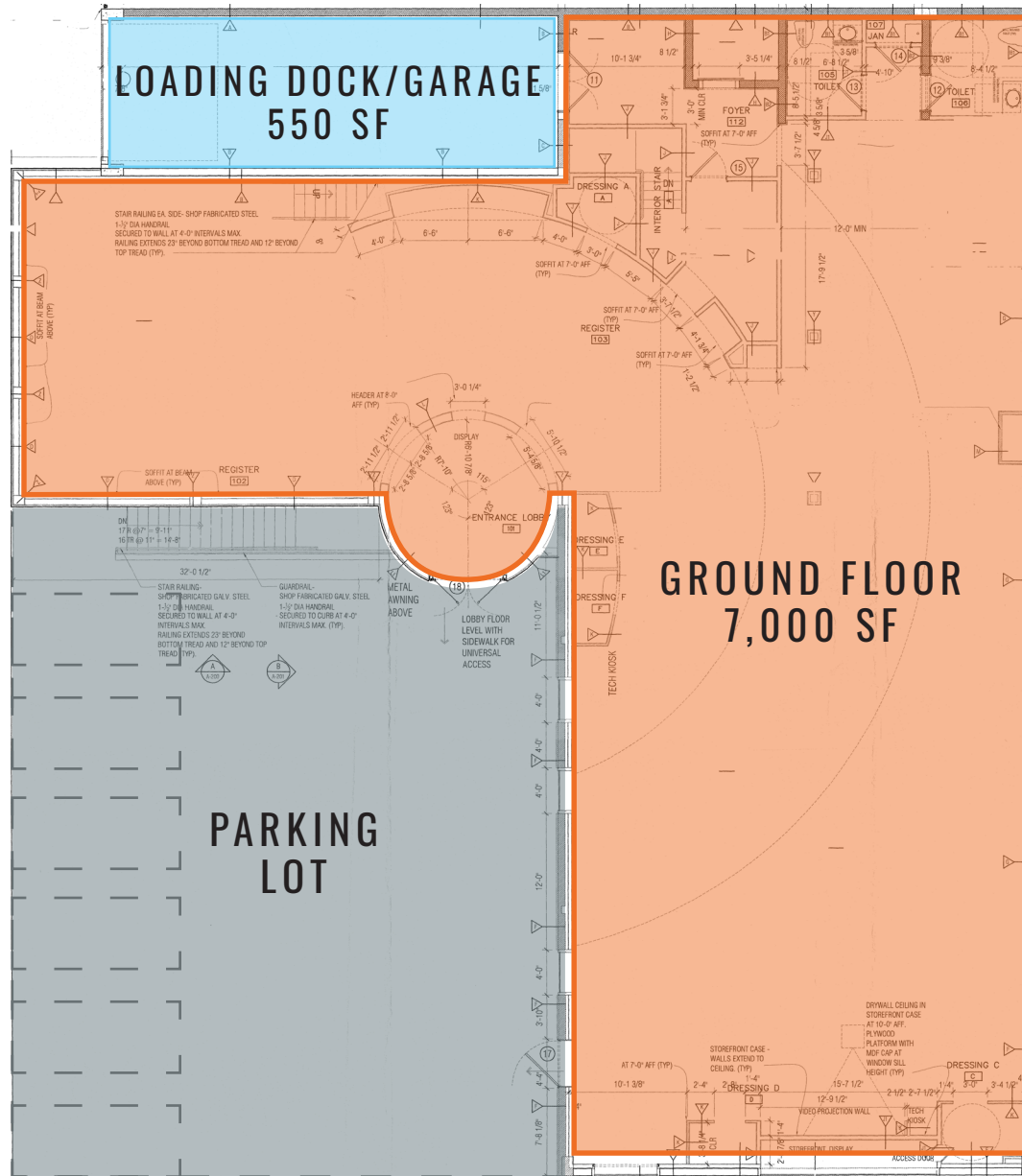


# 2771 NOSTRAND AVENUE

BETWEEN AVENUE N & KINGS HIGHWAY | MIDWOOD

## FLOOR PLANS: GROUND FLOOR



All information supplied in this marketing presentation and/or flyer is from sources deemed reliable and is furnished subject to errors, omissions, modifications, removal of listings from sale/lease and to any listing condition. Any square footage, dimensions, floor plans and/or technical data set forth are approximations and are subject to further elaboration/confirmation.

# 2771 NOSTRAND AVENUE

BETWEEN AVENUE N & KINGS HIGHWAY | MIDWOOD

## FLOOR PLANS:

