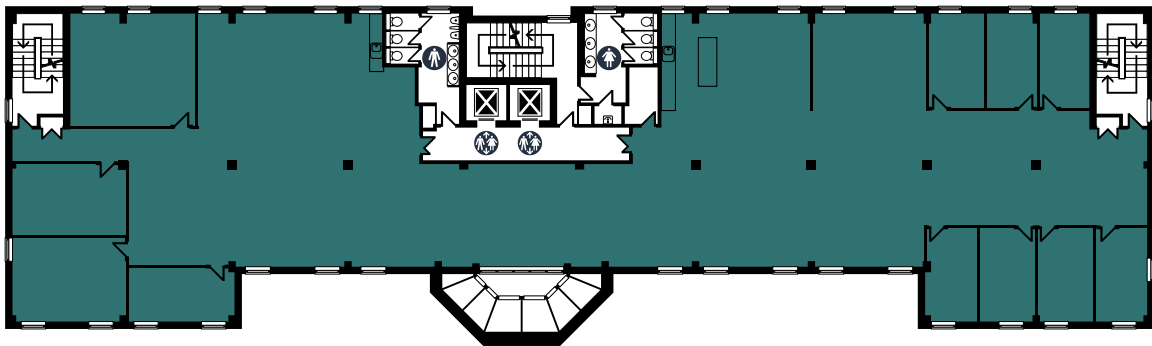




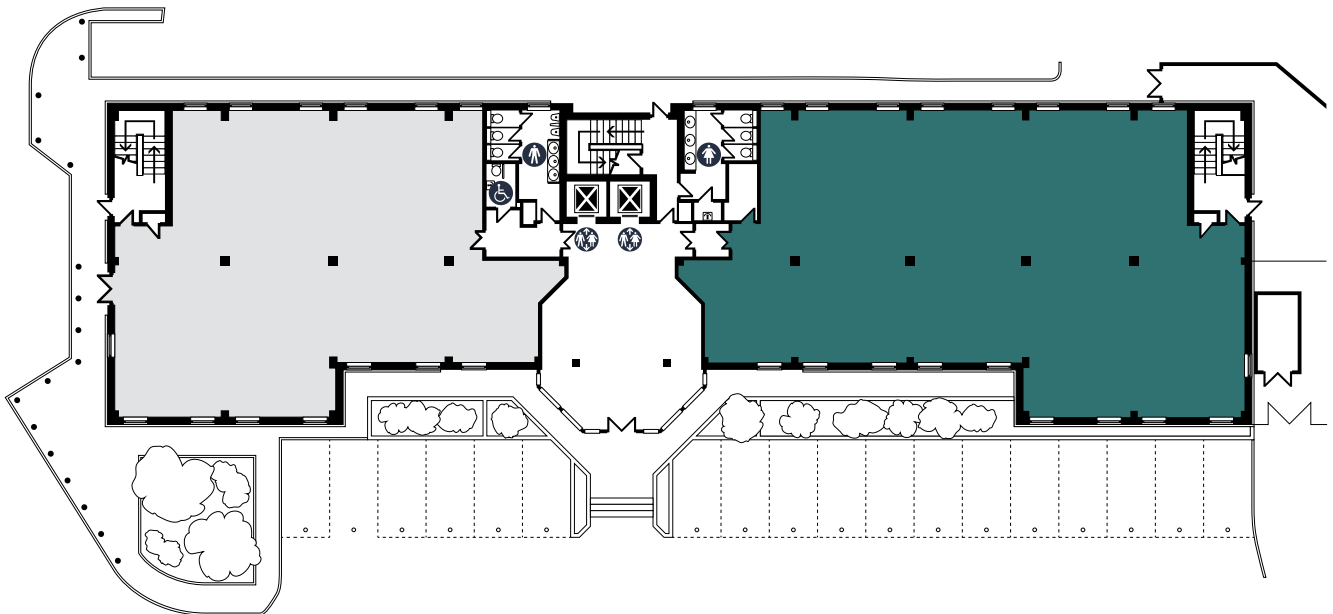
NORCLIFFE HOUSE



First Floor 6,996 SQ. FT.



Part Ground Floor 3,631 SQ. FT.



Developer reserves the right to change the scheme in the future. However, the Vendors / Lessors and Agents of intended as a general outline only, for the guidance of prospective purchasers or tenants, and do not constitute the whole or any part of an offer or contract. (2) They cannot guarantee the accuracy of any description, dimension or other details contained in these Particulars and prospective purchasers or tenants should not rely on them as statements of fact or representation, but must satisfy themselves as to the accuracy of such details. (3) No employee of the Agents has any authority to make or give any representation or warranty, or enter into any contract whatsoever in relation to the property (0725).

01625 588 200 **Orbit**
www.orbit-developments.co.uk **Developments**