

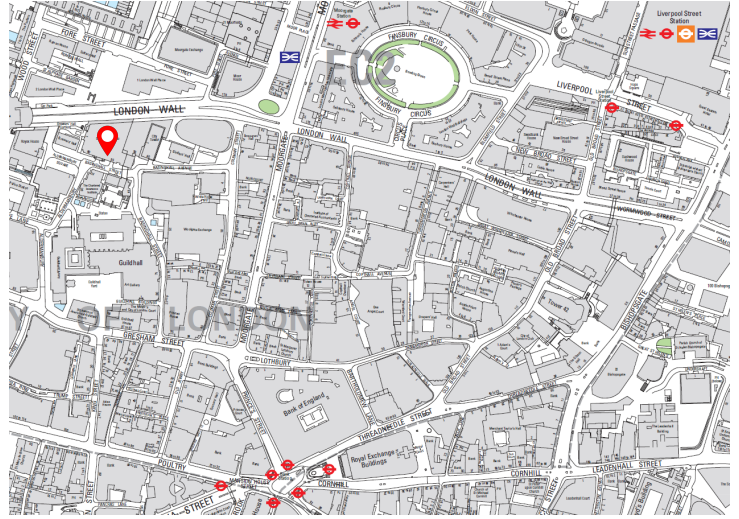
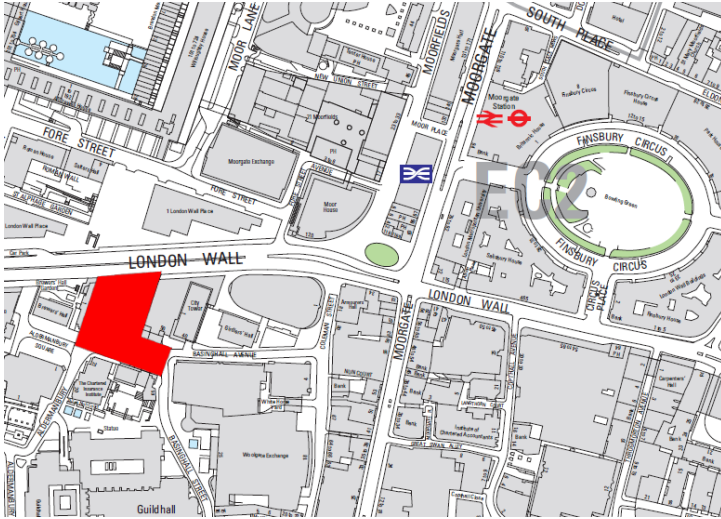


2 Aldermanbury Square, London, EC2

29,077 sq ft* of New Grade A Space available at 2 Aldermanbury Square - premium office in a prime City location.

- Generous natural light
- Efficient, Flexible Floorplates
- Sublease from Clifford Chance
- Brand New Development
- Prominent doubleheight reception
- Excellent transport connectivity
- High-quality end of trip facilities

**Subject to Remeasurement*



Summary

Available Size	11,449 to 29,077 sq ft / 1,063.65 to 2,701.34 sq m
Rent	POA
Rates Payable	£27.33 per sq ft per annum (estimated & exclusive)
Service Charge	£11.50 per sq ft per annum (estimated)
EPC	A

Description

2 Aldermanbury Square is a flagship office redevelopment in the City of London, designed by Allies and Morrison. Arranged over basement, ground and twelve upper floors, the scheme will deliver high quality Grade A accommodation with efficient, flexible floorplates, generous natural light and a prominent double height reception.

The building targets best in class sustainability standards (including BREEAM Outstanding, NABERS 5* and EPC A) and is scheduled to complete in Q1 2026.

Location

2 Aldermanbury Square occupies a prime position in the City, close to leading financial and professional services occupiers and an extensive mix of retail, dining and cultural amenities. The development enhances local permeability with new routes and landscaped spaces, integrating with the wider pedestrian network and supporting a high quality work lifestyle environment.

Transport connectivity is excellent, with Moorgate 50 yards away, Liverpool Street and Bank stations a short walk away, providing the Elizabeth line and National Rail, plus the Northern, Central, Circle, Hammersmith & City, Metropolitan and Waterloo & City lines, making it one of the most accessible locations in Central London.

Accommodation

The accommodation comprises the following areas:

Name	sq ft	sq m	Availability
1st	11,449	1,063.65	Available
2nd	17,628	1,637.69	Available
Total	29,077	2,701.34	



Jonathan Huckstep

07771 527348

jonathan.huckstep@cushwake.com



George Homer

0203 296 3160 / 0758 411 8298

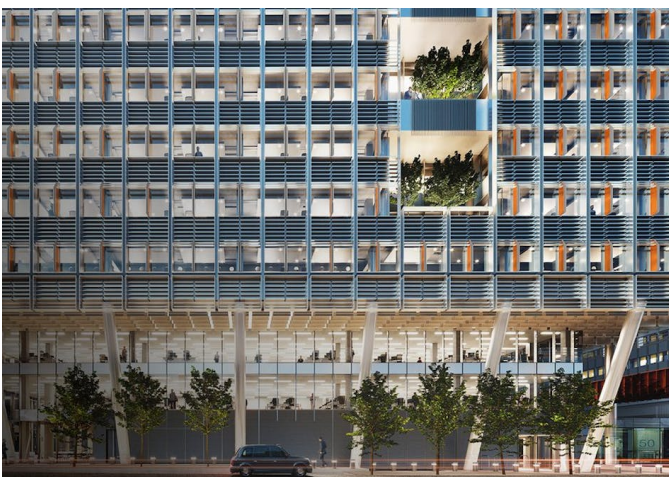
george.homer@cushwake.com

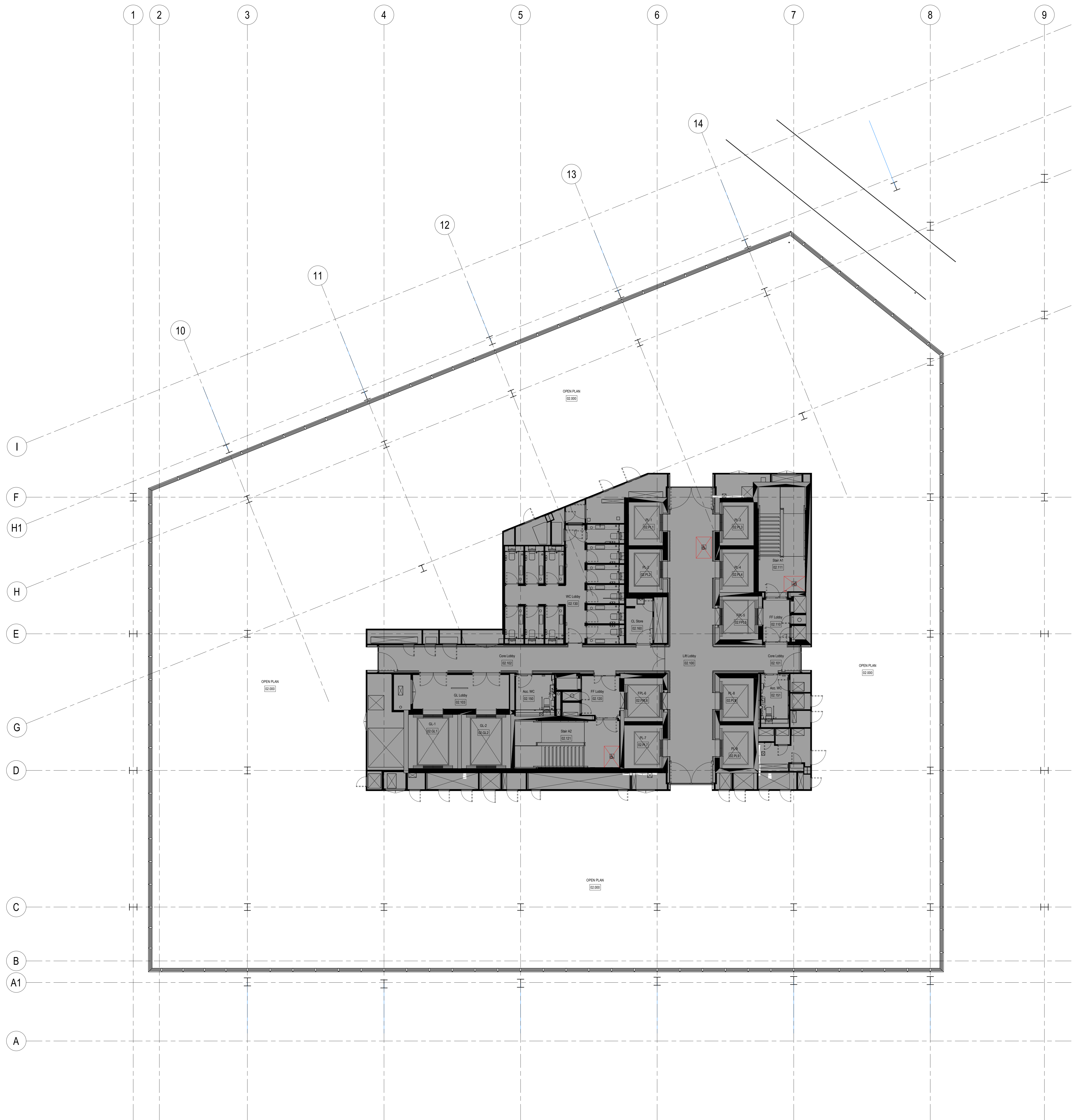


Jack Syradd

020 7152 5223 / 07385 687526b

jack.syradd@cushwake.com





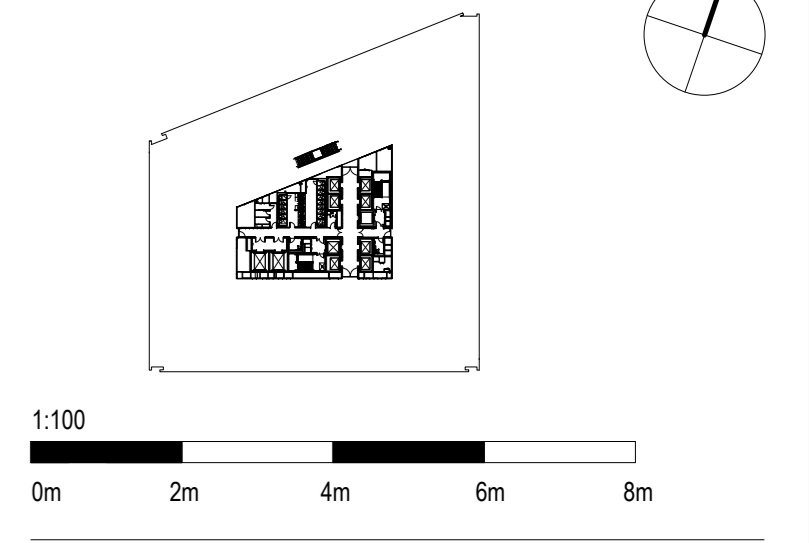
LEGEND

- DENOTES AREA OUT OF SCOPE
- DENOTES AREA DESIGNED BY OTHERS
- DENOTES FIRE CALL POINT
- DENOTES FIRE CURTAIN
- DENOTES MINIMUM DIMENSION CONTRACTOR TO ENSURE DIMENSION MAINTAINED DURING CONSTRUCTION
- DENOTES PLAN DETAIL REFERENCE. REFER TO DETAIL ON SHEET NOMINATED
- DENOTES TURNING CIRCLE DIMENSIONS
- DENOTES EFFECTIVE CLEAR WIDTH
- DENOTES BOLLARDS

GENERAL NOTES

- PLANS SHOW AREAS WITHIN CLIENT LEASE / DEMISE. BASE BUILDING CORE, AMENITIES, OR OTHER AREAS ARE OUT OF SCOPE OF FITOUT WORKS.
- DRAWING TO BE READ IN CONJUNCTION WITH APPLICATION TO / RESPONSE FROM BUILDING CONTROL. CONTRACTOR TO IMPLEMENT ANY CONDITIONS OF BUILDING CONTROL APPROVAL.
- REFER TO ID-01600 SERIES FIRE PLANS FOR DETAILS OF FIRE RATED CONSTRUCTION AND MINIMUM TRAVEL DISTANCES TO BE MAINTAINED DURING CONSTRUCTION.

REFERENCE MAP NORTH



NOTES

1. Do not scale drawing. Written dimensions govern.
2. All dimensions are in millimeters unless noted otherwise.
3. All dimensions shall be verified on site before proceeding with the work. Hassell shall be notified in writing of any discrepancies.
4. This drawing must be read in conjunction with all relevant contracts, specifications and drawings.

This drawing is an uncontrolled copy. Unless noted otherwise
 © Copyright of this drawing is vested in Hassell Ltd.

REV	DESCRIPTION	DATE
P01	STAGE 3 - ISSUE FOR COORDINATION	13/09/25
C01	STAGE 3	11/07/25
P02	STAGE 4 - ISSUE FOR COORDINATION	19/09/25
P03	STAGE 4 - ISSUE FOR COORDINATION	17/10/25
P04	STAGE 4 - ISSUE FOR COORDINATION	21/11/25
C02	STAGE 4	19/12/25

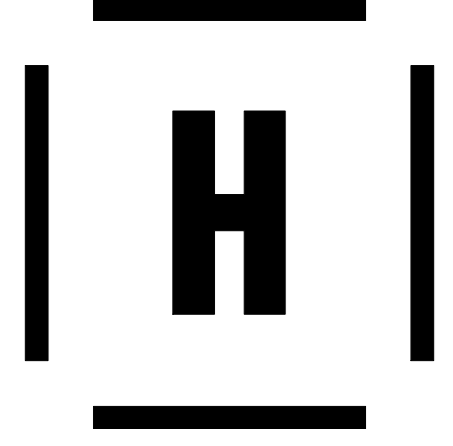
CONSULTANT
Hassell
 Hassell LTD, CN 7545819
 Level 1, 6-14 Underwood Str.
 London, N1 7JG
 United Kingdom
 T +44 20 7460 7620
 london@hassellstudio.com

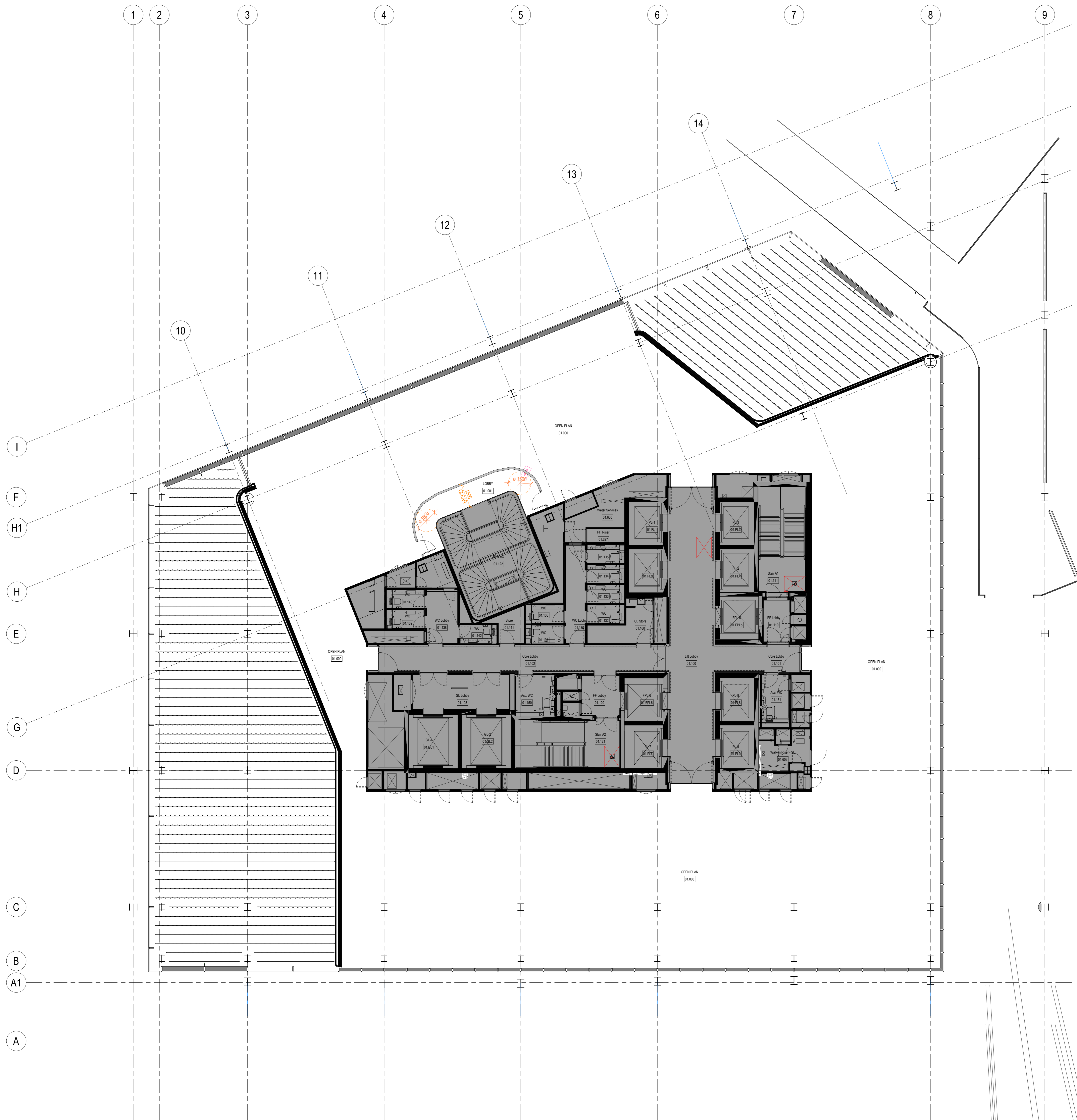
CLIENT
 CLIFFORD CHANCE
PROJECT
 2AS
 2 ALDERMANBURY SQUARE
 LONDON

STATUS
 RIBA STAGE 4
DRAWING TITLE
 GENERAL ARRANGEMENT PLAN - LEVEL 02

REVIEWED SCALE @ A0
 AC 1 : 100
APPROVED PROJECT NO.
 MB 017500

Proj-Orig-Vol-Lev-Typ-Rol-Num Rev
 2AS-HSL-FX-02-DR-ID-01002 C02





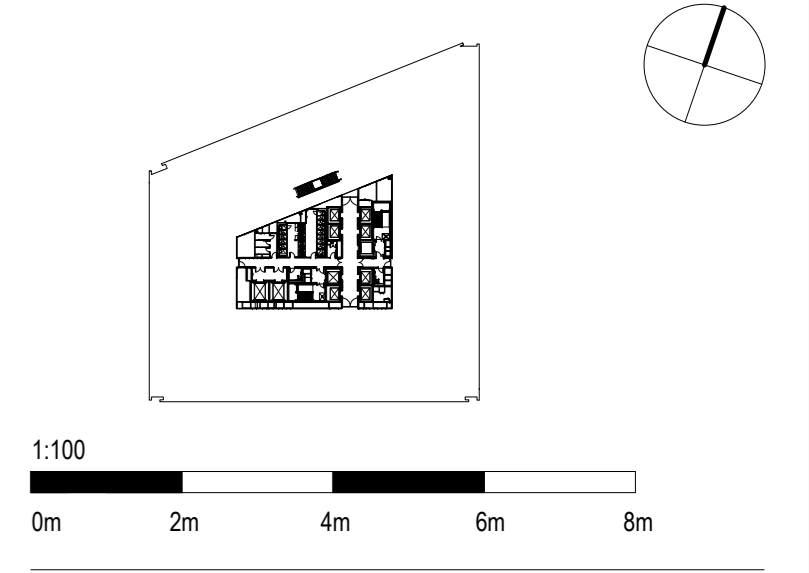
LEGEND

- DENOTES AREA OUT OF SCOPE
- DENOTES AREA DESIGNED BY OTHERS
- DENOTES FIRE CALL POINT
- DENOTES FIRE CURTAIN
- DENOTES MINIMUM DIMENSION CONTRACTOR TO ENSURE DIMENSION MAINTAINED DURING CONSTRUCTION
- DENOTES PLAN DETAIL REFERENCE. REFER TO DETAIL ON SHEET NOMINATED
- DENOTES TURNING CIRCLE DIMENSIONS
- DENOTES EFFECTIVE CLEAR WIDTH
- DENOTES BOLLARDS

GENERAL NOTES

- PLANS SHOW AREAS WITHIN CLIENT LEASE / DEMISE, BASE BUILDING CORE, AMENITIES, OR OTHER AREAS ARE OUT OF SCOPE OF FITOUT WORKS.
- DRAWING TO BE READ IN CONJUNCTION WITH APPLICATION TO / RESPONSE FROM BUILDING CONTROL CONTRACTOR TO IMPLEMENT ANY CONDITIONS OF BUILDING CONTROL APPROVAL.
- REFER TO ID-01600 SERIES FIRE PLANS FOR DETAILS OF FIRE RATED CONSTRUCTION AND MINIMUM TRAVEL DISTANCES TO BE MAINTAINED DURING CONSTRUCTION.

REFERENCE MAP NORTH



- NOTES**
1. Do not scale drawing. Written dimensions govern.
 2. All dimensions are in millimeters unless noted otherwise.
 3. All dimensions shall be verified on site before proceeding with the work. Hassell shall be notified in writing of any discrepancies.
 4. This drawing must be read in conjunction with all relevant contracts, specifications and drawings.
- This drawing is an uncontrolled copy. Unless noted otherwise
 © Copyright of this drawing is vested in Hassell Ltd.

REV	DESCRIPTION	DATE
P01	STAGE 3 - ISSUE FOR COORDINATION	13/09/25
C01	STAGE 3	11/07/25
P02	STAGE 4 - ISSUE FOR COORDINATION	19/09/25
P03	STAGE 4 - ISSUE FOR COORDINATION	17/10/25
P04	STAGE 4 - ISSUE FOR COORDINATION	21/11/25
C02	STAGE 4	19/12/25

CONSULTANT
Hassell
 Hassell LTD, CN 7545819
 Level 1, 6-14 Underwood Str.
 London, N1 7UD
 United Kingdom
 T +44 20 7600 7600
 london@hassellstudio.com

CLIENT
 CLIFFORD CHANCE
PROJECT
 2AS
 2 ALDERMANBURY SQUARE
 LONDON

STATUS
 RIBA STAGE 4
DRAWING TITLE
 GENERAL ARRANGEMENT PLAN - LEVEL 01

REVIEWED	SCALE @ A0
AC	1 : 100
APPROVED	PROJECT NO.
MB	017500

Proj-Orig-Vol-Lev-Typ-Rol-Num	Rev
2AS-HSL-FX-01-DR-ID-01001	C02

