



177 Junction Road

N19 5QA

Overview

The property comprises a ground floor retail unit with upper residential accommodation.

The property is located on the south side of this busy thoroughfare linking Archway to Tuffnell Park, in the heart of this densely populated commercial and residential catchment area. The demise is well served by public transport with Archway (7 min walk) and Tufnell Park (5 min walk) Underground Stations (Northern Line) nearby as well as being served by a number of bus routes.

Property Facts

Rent	£30,000 /PA
Property Type	Retail
Property Subtype	Storefront Retail/Residential
Gross Internal Area	1,581 SF
Year Built	1930

Floor plan



Forbidden (403)

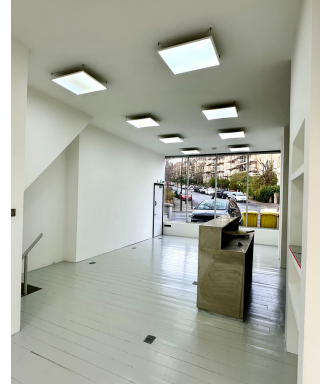
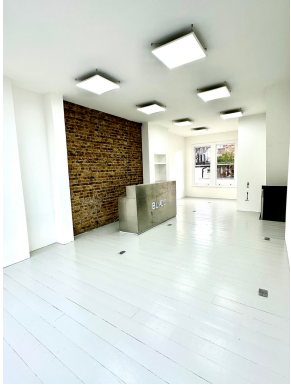
Sorry, you cannot access this page

Please visit our [Help Center](#) for more information. Error code:
[866dd08b3fe656ce]

[Go back to the Canva homepage](#)

With exceptionally high ceilings and bursting with natural light, the space is uniquely positioned to work for many business types, such as fitness inc yoga, gym, health, office, retail, estate agency etc.

“Extremely high ceilings
and loads of natural light”



Contact Information

We would love to hear from you!

info@simra.estate | 07796177778 | @simra_estate