



Space Information
Kings Court, Stevenage



**SPACE
THAT
WORKS**

WHAT'S INCLUDED

Fully equipped

Take the space you need and move straight in. Everything is ready for you, from the desks to the internet. The inclusive monthly price means you don't need to worry about utilities or business rates

Dream team

Our talented team of professionals are on-site to ensure you always get the very best service.

A great reception

We always provide a warm welcome. As well as looking after your guests, we take care of your post, parcels and printing

Come and go

Access your private office any time you want, seven days a week

Collaboration spaces

Choose from bookable meeting rooms, phone booths and communal spaces

Take a break

Not only will you find a fully stocked kitchen, you'll also be in the heart of the city, with all the shops and cafés you could need

Shipshape

You can expect regular cleaning of your office space and communal areas. We handle Health & Safety and maintenance too

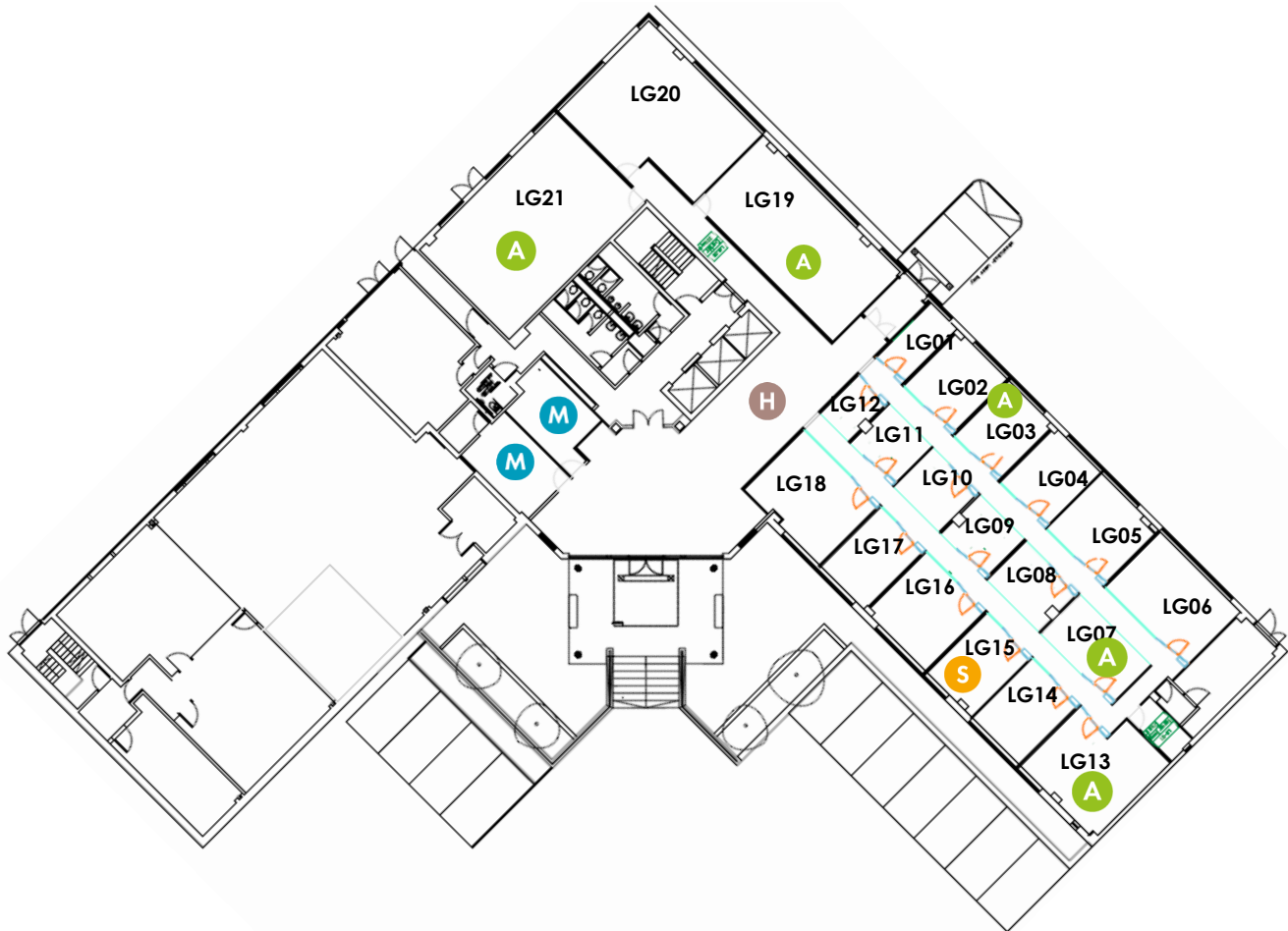
Be part of a great community

Connect with like-minded members, by joining our networking events, socials and casual coffee breaks

Access all areas

As a Mantle member you can work from any of our spaces. Find us in Cambridge, Chelmsford, Duxford, Oxfordshire and Stansted

LOWER GROUND FLOOR



THE FIGURES

A Available
 S Available soon
 H Home-Flexi
 M Meeting room

LOWER GROUND FLOOR

Office	Size sq ft	Size sq m	Number of desks	Price from per month	Availability
LG01	101	9.4	2	LET	LET
LG02	164	15.2	4	LET	LET
LG03	153	14.2	4	£1,440+vat	AVAILABLE
LG04	154	14.3	4	LET	AVAILABLE SOON
LG05	189	17.6	4	LET	LET
LG06	276	25.6	8	LET	LET
LG07	171	15.9	4	£1,440+vat	AVAILABLE
LG08	122	11.3	2	LET	LET
LG09	105	9.8	2	LET	LET
LG10	109	10.1	2	LET	LET

THE FIGURES

LOWER GROUND FLOOR					
Office	Size sq ft	Size sq m	Number of desks	Price from per month	Availability
LG11	100	9.3	2	LET	LET
LG12	74	6.9	1	LET	LET
LG13	321	29.8	12	£4,560+vat	AVAILABLE
LG14	175	16.3	4	LET	AVAILABLE SOON
LG15	165	15.3	4	£1440+vat	AVAILABLE JUNE
LG16	225	20.9	6	LET	LET
LG17	166	15.4	4	LET	LET
LG18	297	27.6	8	LET	LET
LG19	597	55.5	18	£6,840+vat	AVAILABLE
LG20	592	55.0	18	LET	LET
LG21	786	73.0	28	£10,640+vat	AVAILABLE
LG MTG 01	170	15.7	6	Meeting Room	By the Hour
LG MTG 02	179	16.6	8	Meeting Room	By the Hour

A Available

S Available soon

H Home-Flexi

M Meeting room

SECOND FLOOR



A Available
 S Available soon
 H Home-Flexi
 M Meeting room

THE FIGURES

SECOND FLOOR					
Office	Size sq ft	Size sq m	Number of desks	Price from per month	Availability
201	558	51.8	14	LET	LET
202	375	34.8	11	LET	LET
203	246	22.9	6	LET	LET
204	355	33.0	9	LET	LET
205	111	10.3	2	LET	LET
206	189	17.6	4	£1,440	AVAILABLE
207	138	12.8	3	LET	LET

THE FIGURES

SECOND FLOOR (CONTINUED)					
Office	Size sq ft	Size sq m	Number of desks	Price from per month	Availability
208	323	30.0	8	LET	LET
209	193	17.9	4	Meeting Room	By the Hour
210	86	8.0	1	LET	LET
211	86	8.0	1	LET	LET
212	87	8.1	1	LET	LET
213	86	8.0	1	LET	LET
214	86	8.0	1	LET	LET
215	87	8.1	1	£450	AVAILABLE JUNE
216a	228	21.2	6	LET	LET
216b	189	17.6	4	LET	LET
217	334	31.0	8	LET	LET
218	191	17.7	4	LET	LET
219	136	12.6	3	LET	LET
220	172	15.9	4	Centre Manager Office	
221	172	15.9	4	£1,440+vat	AVAILABLE
222	366	34.0	10	LET	LET
223	122	11.3	2	LET	LET
224	122	11.3	2	LET	LET
225	330	30.7	8	LET	LET
226	149	13.8	4	£1,440+vat	AVAILABLE
227	116	10.8	3	LET	LET
228	116	10.8	3	LET	LET
229	74	6.9	1	LET	LET
230	74	6.9	1	LET	LET
231	74	6.9	1	LET	LET
232	90	8.4	2	LET	LET
233	90	8.4	2	LET	LET
234	158	14.7	4	LET	LET
235	158	14.7	4	£250+vat	DEDICATED DESK
236	158	14.7	4	£1,440+vat	AVAILABLE
237	294	27.3	7	LET	LET
238	158	14.7	4	£1,440	AVAILABLE
239	316	29.4	8	LET	LET
240	276	25.6	7	£2,660+vat	AVAILABLE
241	262	24.3	7	£2,660+vat	AVAILABLE
242	241	22.4	6	LET	LET

FLEXIBLE OPTIONS



Home-Flexi For 1-8 people

Home-Flexi 5

Work at any Mantle Space for 5 days per month

Use our small or medium meeting rooms for 2 hours per month

Business address

£160 + VAT per month (plus 1 month deposit)

Home-Flexi 10

Work at any Mantle Space for 10 days per month

Use our small or medium meeting rooms for 4 hours per month

Business address

£210 + VAT per month (plus 1 month deposit)

Home-Flexi 15

Work at any Mantle Space for 15 days per month

Use our small or medium meeting rooms for 6 hours per month

Business address

£260 + VAT per month (plus 1 month deposit)



Virtual For any business size

Business address

Professional address and post handling

£65 + VAT per month (plus 1 month deposit)

Call answering

We answer your calls in your company name

£90 + VAT per month (plus 1 month deposit)

Full virtual office

A package of our business address and call answering services

£125 + VAT per month (plus 1 month deposit)



GET IN TOUCH

Call 01438 878800 Mail kc@mantlespace.co.uk
Mantle Space Ltd Kings Court, London Road, Stevenage
Hertfordshire, SG1 2NG

mantlespace.co.uk

Twitter [@mantlespace](https://twitter.com/mantlespace)
Facebook [@mantlespace](https://facebook.com/mantlespace)
Instagram [@mantlespace](https://instagram.com/mantlespace)