

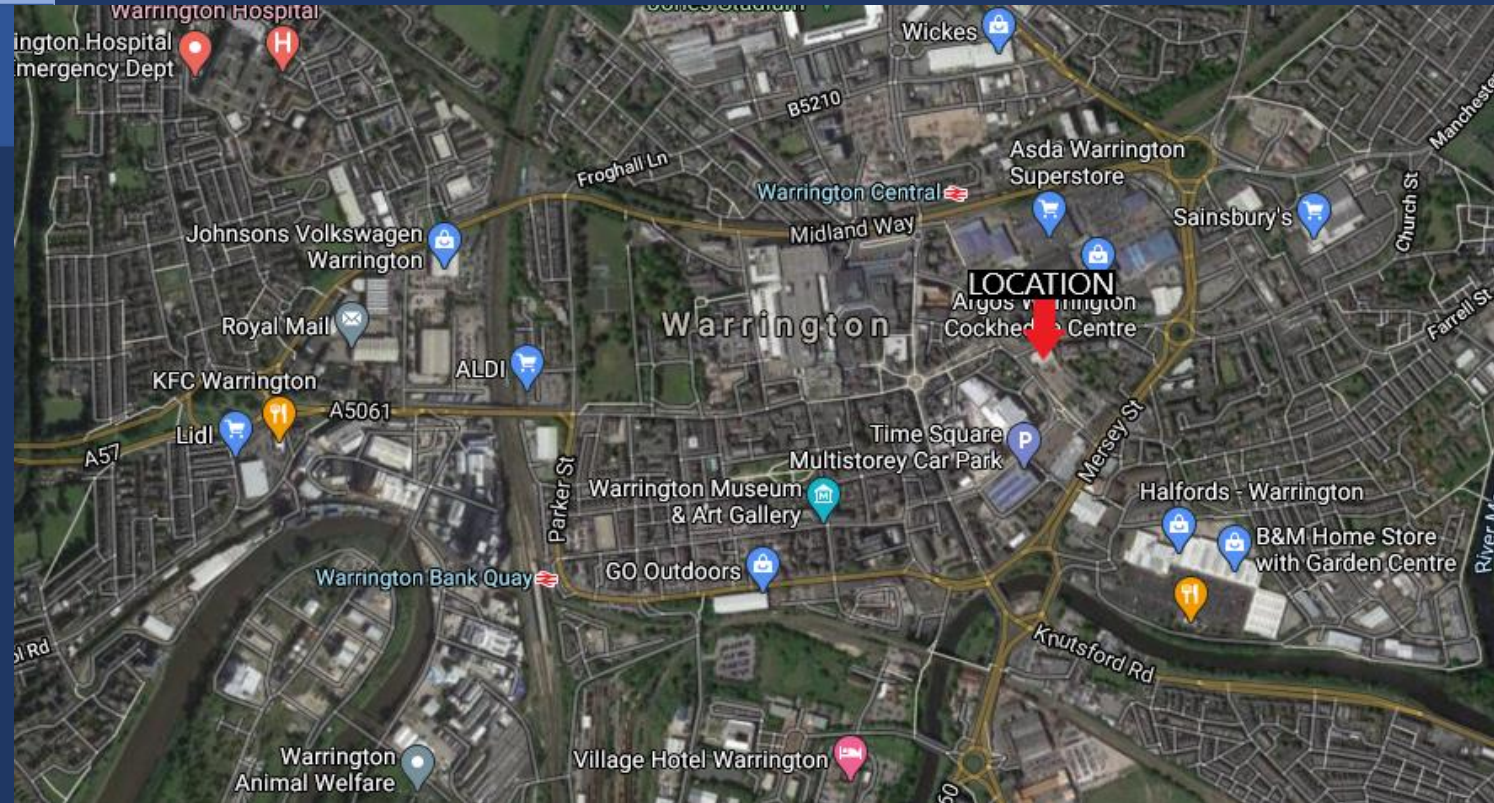
Academy Way, Buttermarket Street, Warrington, WA1 2NN

TO LET – 5 NEW UNITS AVAILABLE FROM AUGUST 2021

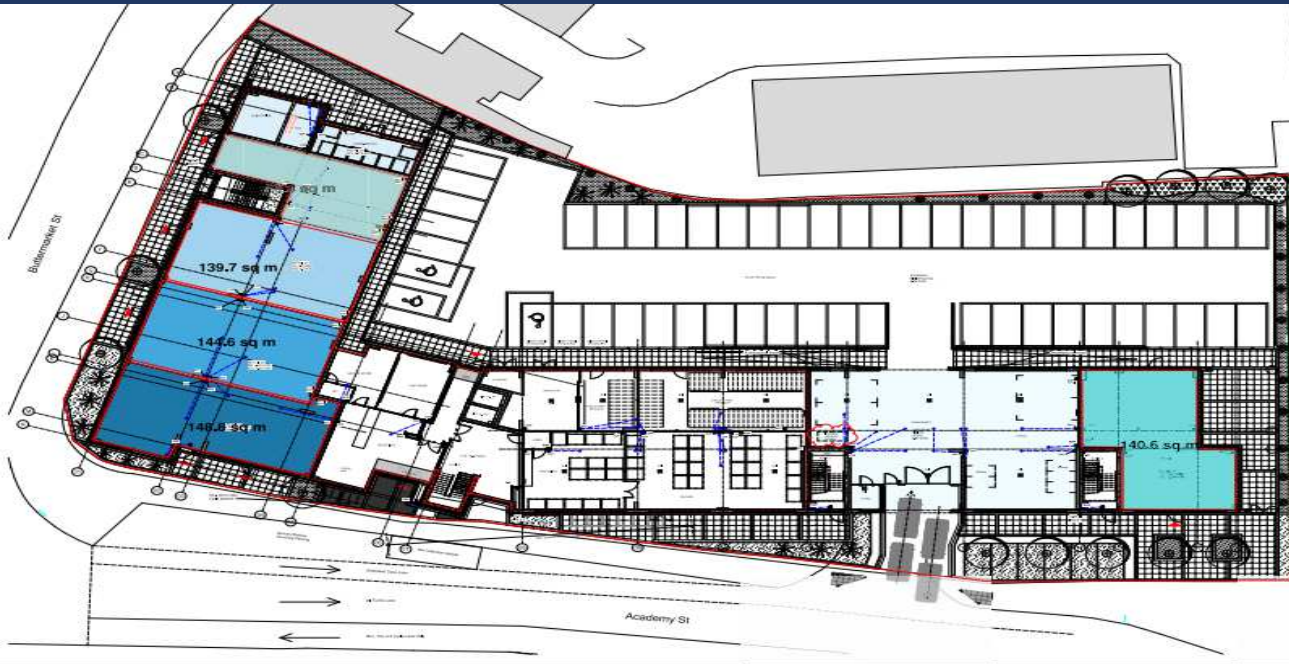


LOCATION

The Development provides a 9 storey scheme comprising ground floor commercial units with 144 apartments above due for completion at the end of August 2021, and is situated on the Eastern entrance to Warrington Town Centre opposite the new Times Square retail, leisure and office development anchored by Vue Cinemas, Warrington Borough Council offices and the new covered market hall. National operators in the immediate area include Vue Cinema, The Botanist, Argos, Asda and Wetherspoons.



Academy Way, Buttermarket Street, Warrington, WA1 2NN



DESCRIPTION

- Available from the end of August 2021!
- Very prominent location on the junction of Academy way and Buttermarket Street
- 500 meters from the prime shopping centre
- Opposite the new Time Square retail, leisure and office development
- Within 250 meters of the Time Square multi storey car park
- Suitable for class E use excluding Bars, Restaurants and Takeaways

UNITS

- Unit 1 – 1513 sq.ft/140.6 sq.m
- Unit 2 – 1600 sq.ft/148.6 sq.m
- Unit 3 – 1550 sq.ft/144.6 sq.m
- Unit 4 – 1500 sq.ft/139.7 sq.m
- Unit 5 – 960 sq.ft/89.2 sq.m

LEGAL COSTS

- Each party to pay their own legal costs

ENQUIRIES



Suite 1, Oak Tree Barn, Hatton Lane, Hatton, WA4 4BX



brad@readproperty.info



www.readproperties.co.uk



01925 213987