

# 5 CARNABY STREET

a development by

**Shaftesbury** **CARNABY**

# Breathing new life into the heart of Carnaby

---

Literally breathing a whole new lease of life into Carnaby Street, the stunning “living wall” of 5 Carnaby Street inspires and invigorates every time you arrive at the building.



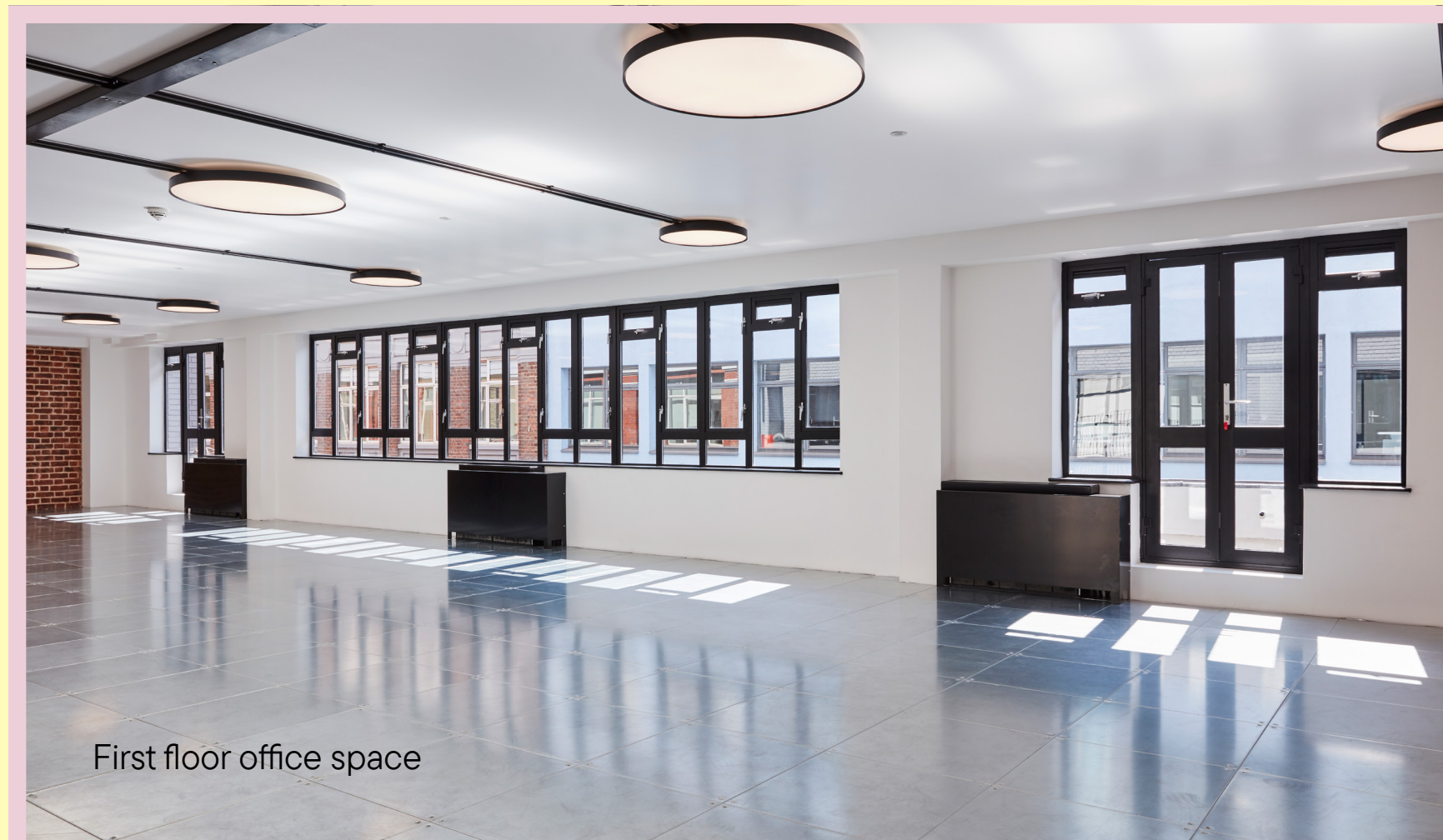
CGI of exterior

# Living. Breathing. Loving. London.

---

## Specification

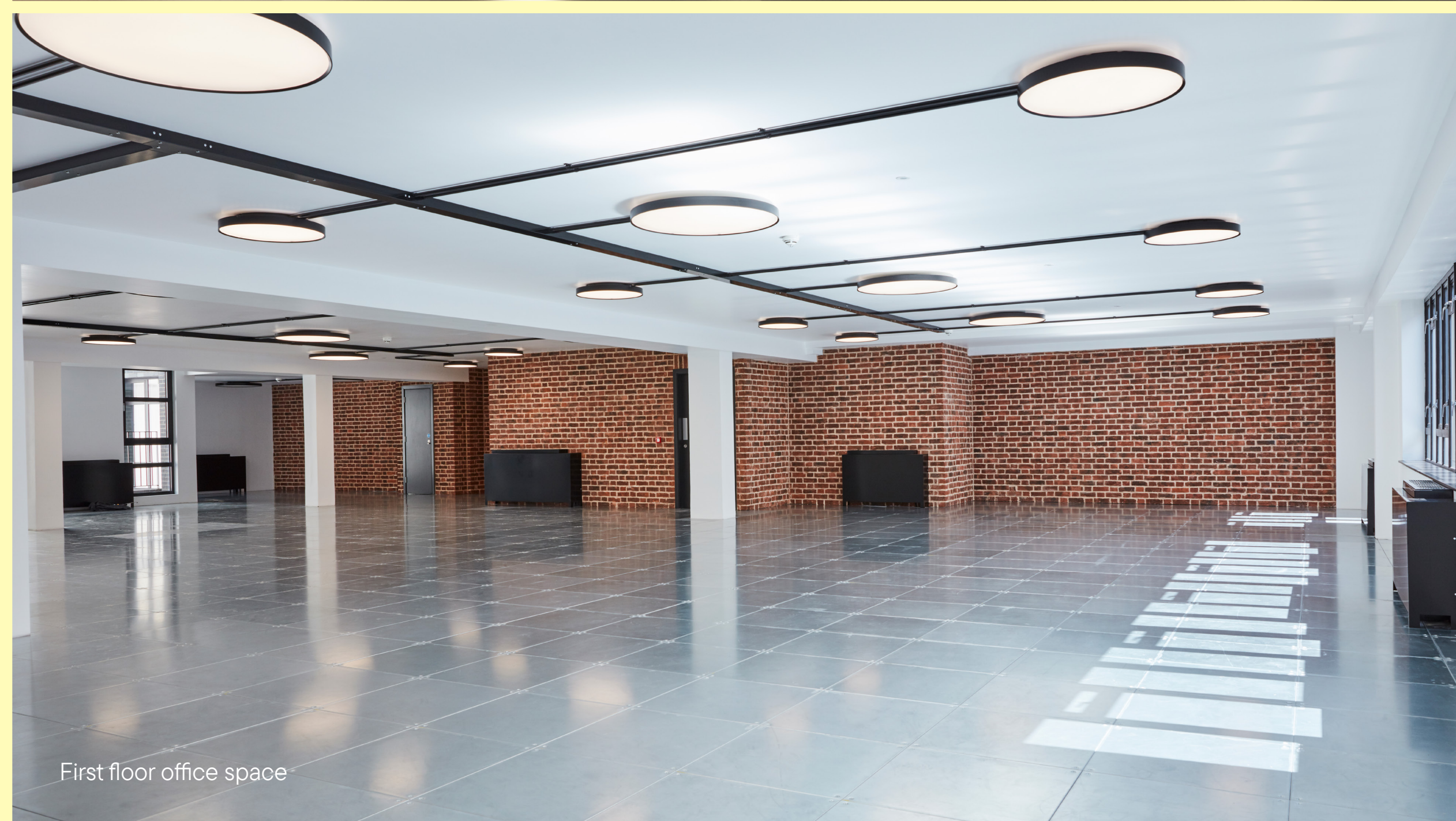
- A comprehensive refurbishment designed by renowned architects Brimelow McSweeney
- 12,278 sq ft over 1st to 5th floors of creative space with two new office floors
- A new living wall facade designed by Scotscape
- Demised terraces and access to communal 6th floor roof terrace
- Perimeter Comfort Cooling (floors 1-3)
- Ceiling mounted air conditioning (floors 4 & 5)
- Full access raised floors throughout
- Targeting BREEAM 'Very Good'
- Targeting EPC 'B'
- 1x5 person passenger lift
- Showers and bicycle storage



And with a range of private terraces, contrasting monochrome styling, and an elegant, high-quality finish throughout, this is a workspace that never fails to make an impact.



CGI of new third floor office space



First floor office space

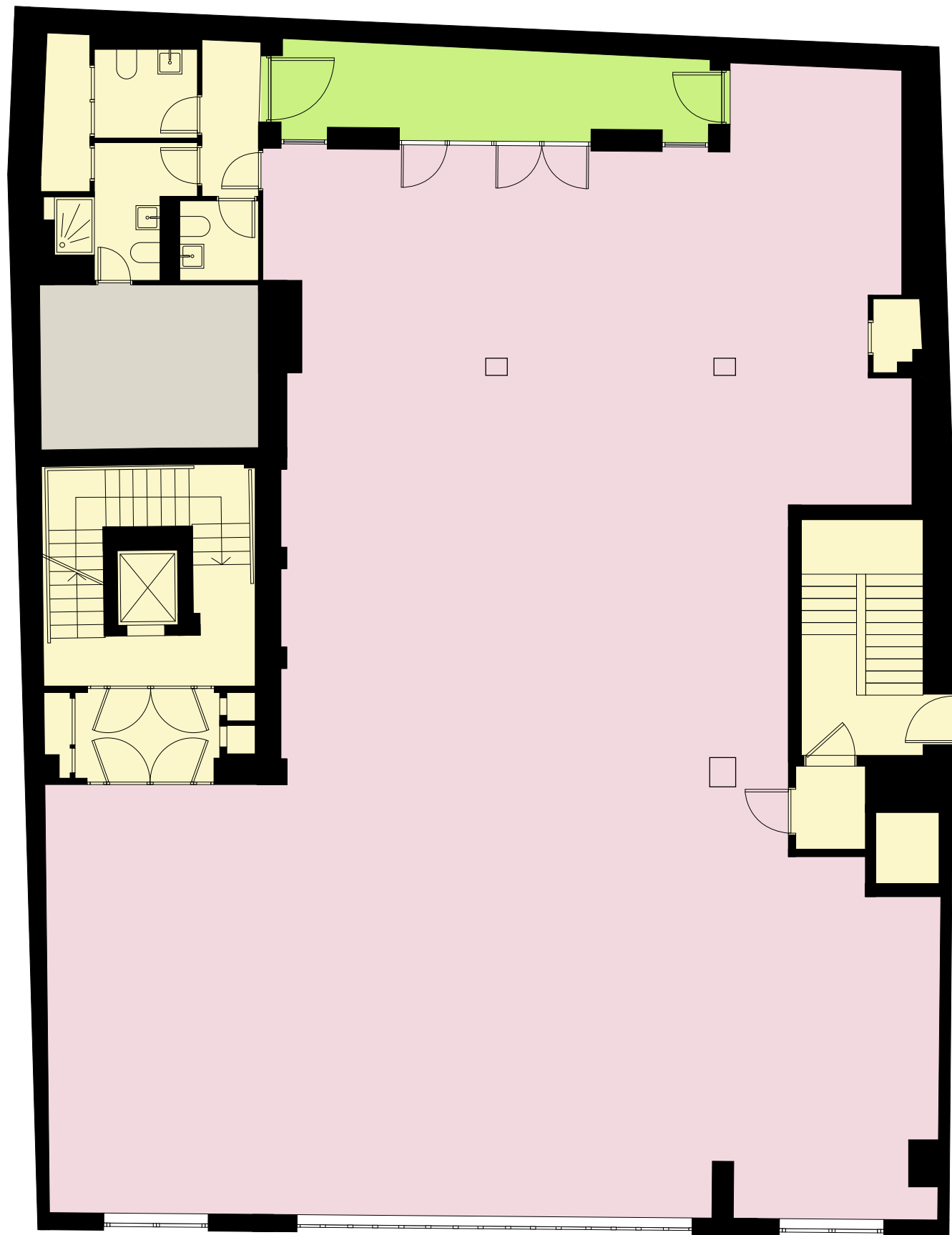
# 12,278 sq ft of wow-factor office space

FLOOR	OFFICE (SQ FT)	OFFICE (SQ M)	TERRACE (SQ FT)
Sixth	-	-	592
Fifth	1,851	172	366
Fourth	2,616	243	-
Third	2,626	244	161
Second	2,979	267	43
First	2,826	263	129
<b>TOTAL</b>	<b>12,278</b>	<b>1,189</b>	<b>1,119</b>

# Floor plan

## First floor

Office: 2,826 sq ft  
Terrace: 129 sq ft



Carnaby Street



- Terrace
- Plant area
- Office
- Core

# Space plan

## Accommodation

Fixed working positions	28
Flexible working positions	25
Welcome Area	1
Soft Seating	2
Meeting Rooms	1
Coffee Station	1
Breakout	3
Collaboration Areas	4
Branding Wall	1
Call Rooms	2
Built-In Storage Units	7
Tenant Branding Opportunities	4

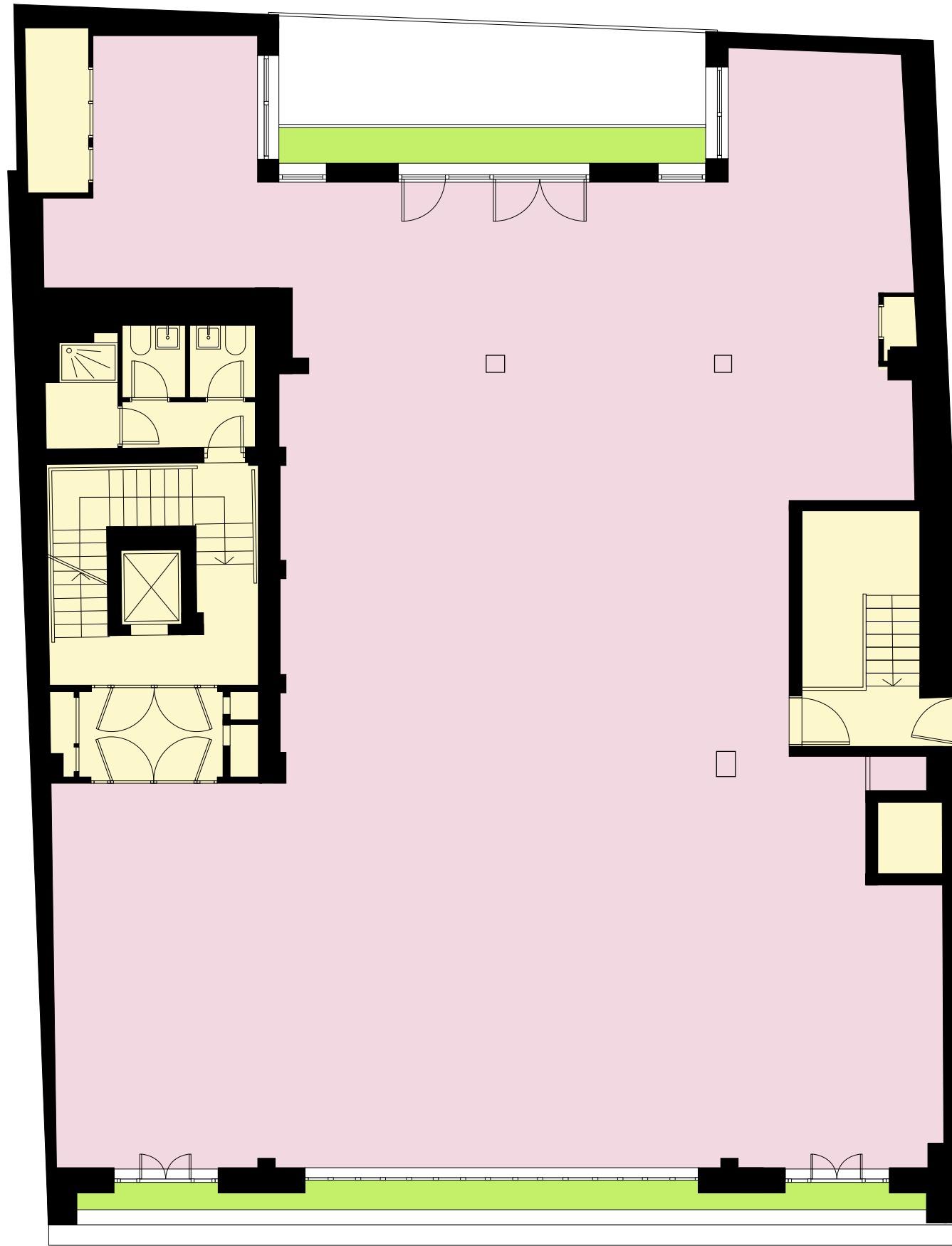


Carnaby Street

# Floor plan

## Second floor

Office: 2,979 sq ft  
Terrace: 43 sq ft

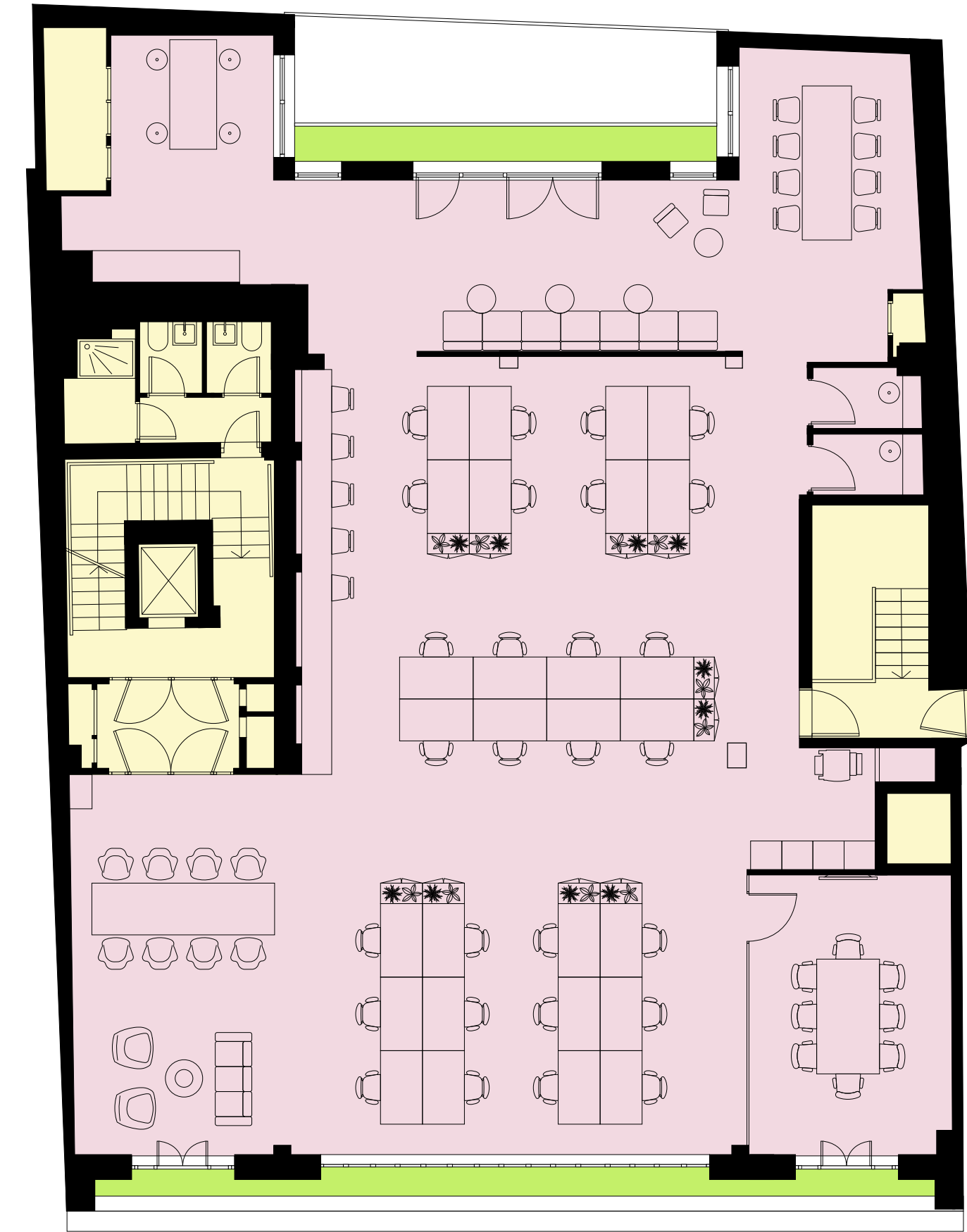


Carnaby Street

# Space plan

## Accommodation

Fixed working positions	28
Flexible working positions	21
Soft Seating	2
Banquette	1
Meeting Rooms	1
Coffee Station	1
Breakout	3
Collaboration Areas	5
Call Rooms	2
Built-In Storage Units	7
Tenant Branding Opportunities	4

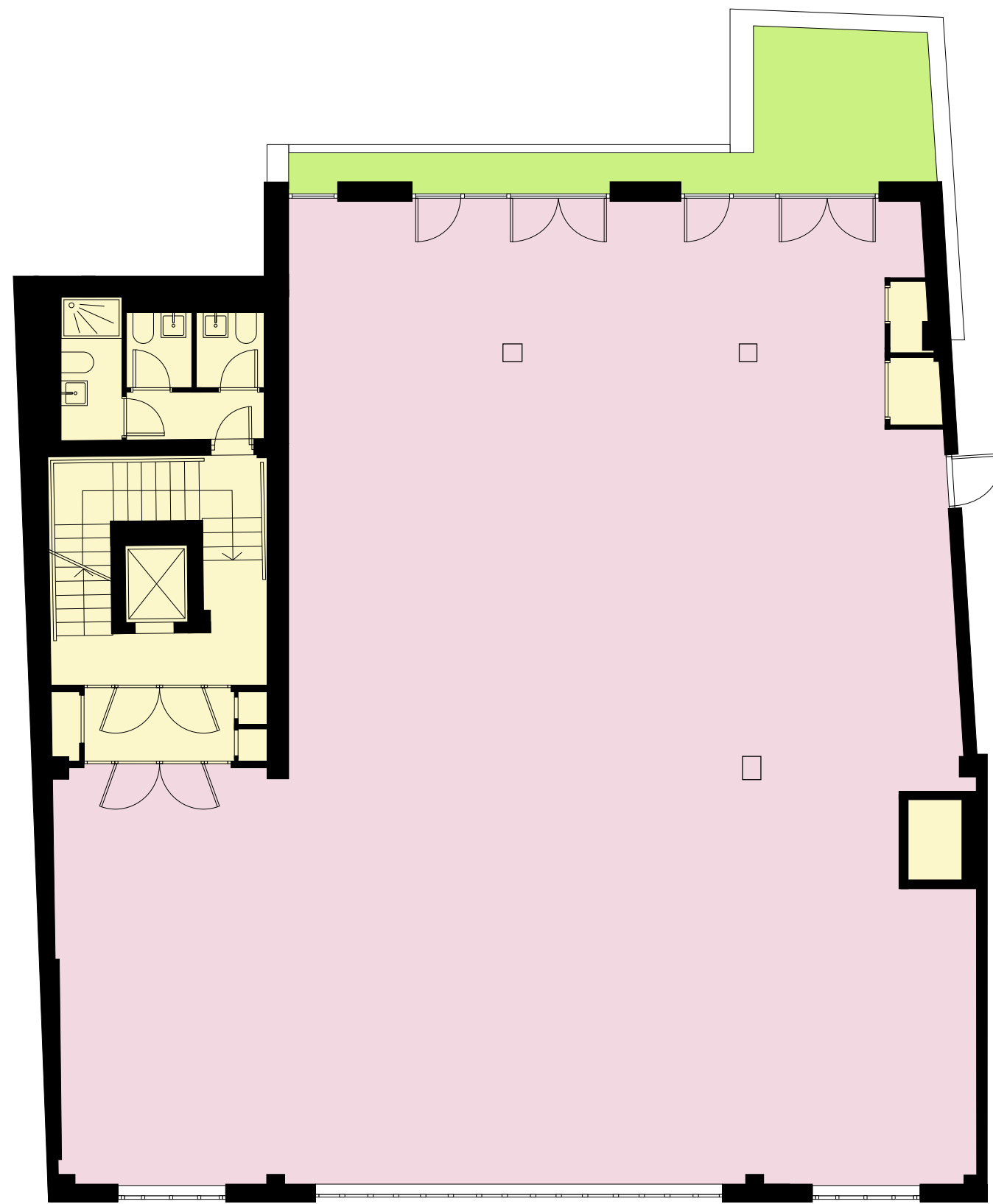


Carnaby Street

# Floor plan

## Third floor

Office: 2,626 sq ft  
Terrace: 161 sq ft



Carnaby Street



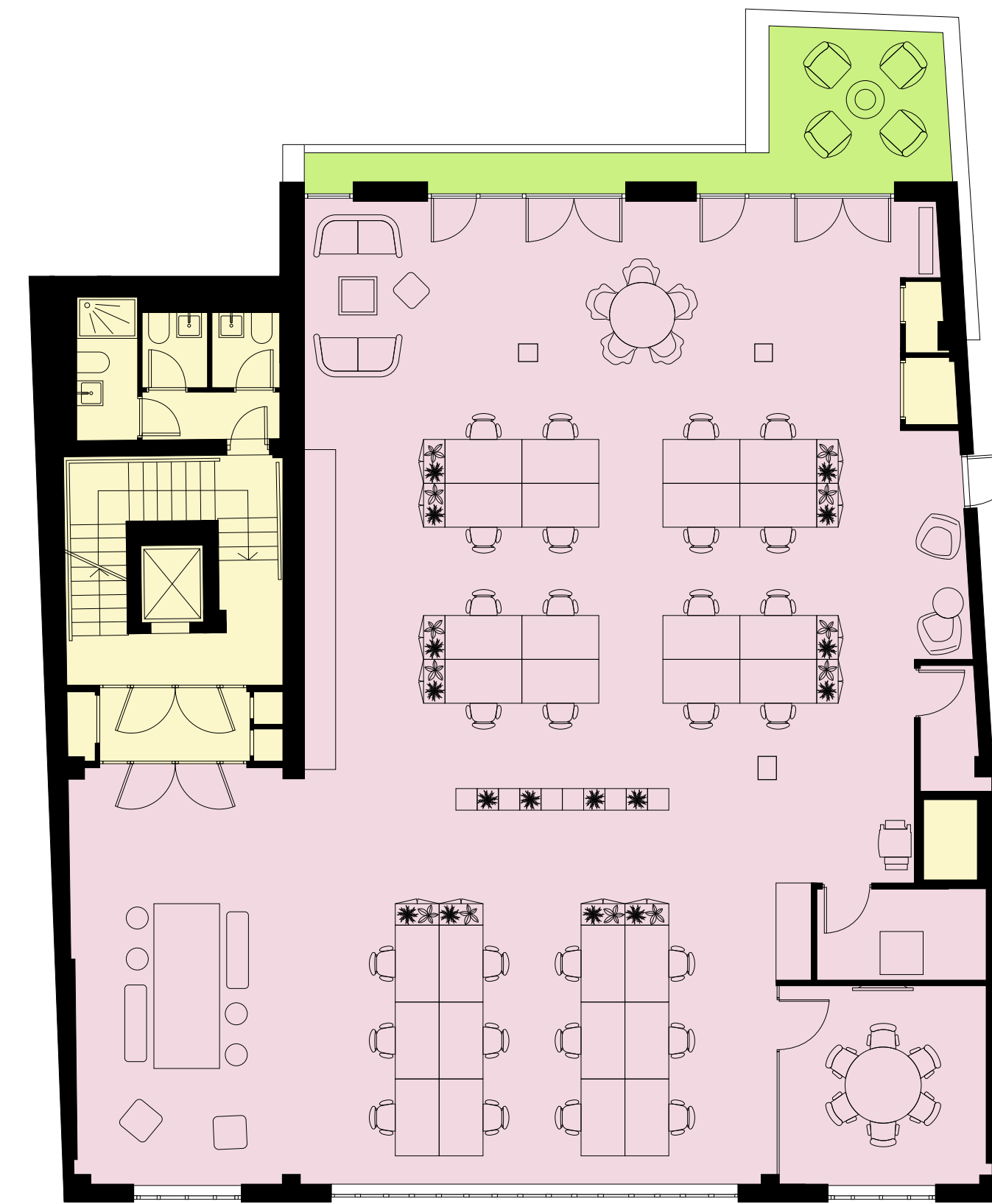
N

- Terrace
- Office
- Core

# Space plan

## Accommodation

Fixed working positions	28
Flexible working positions	13
Soft Seating	2
Meeting Rooms	1
Coffee Station	1
Breakout	2
Collaboration Areas	3
Call Rooms	1
Comms Room	1
Built-In Storage Units	5
Balcony	1
Tenant Branding Opportunities	4

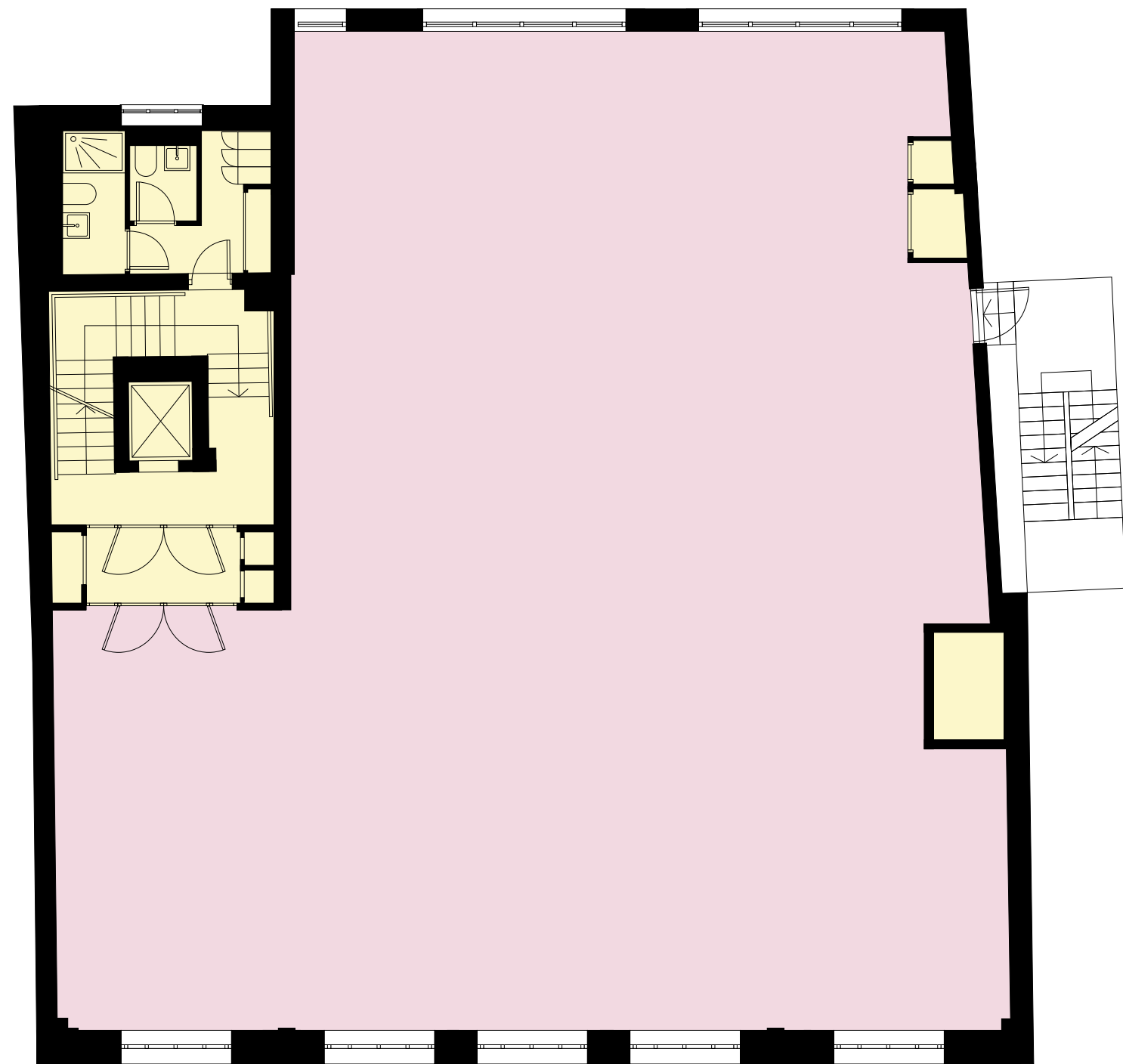


Carnaby Street

# Floor plan

## Fourth floor

Office: 2,616 sq ft

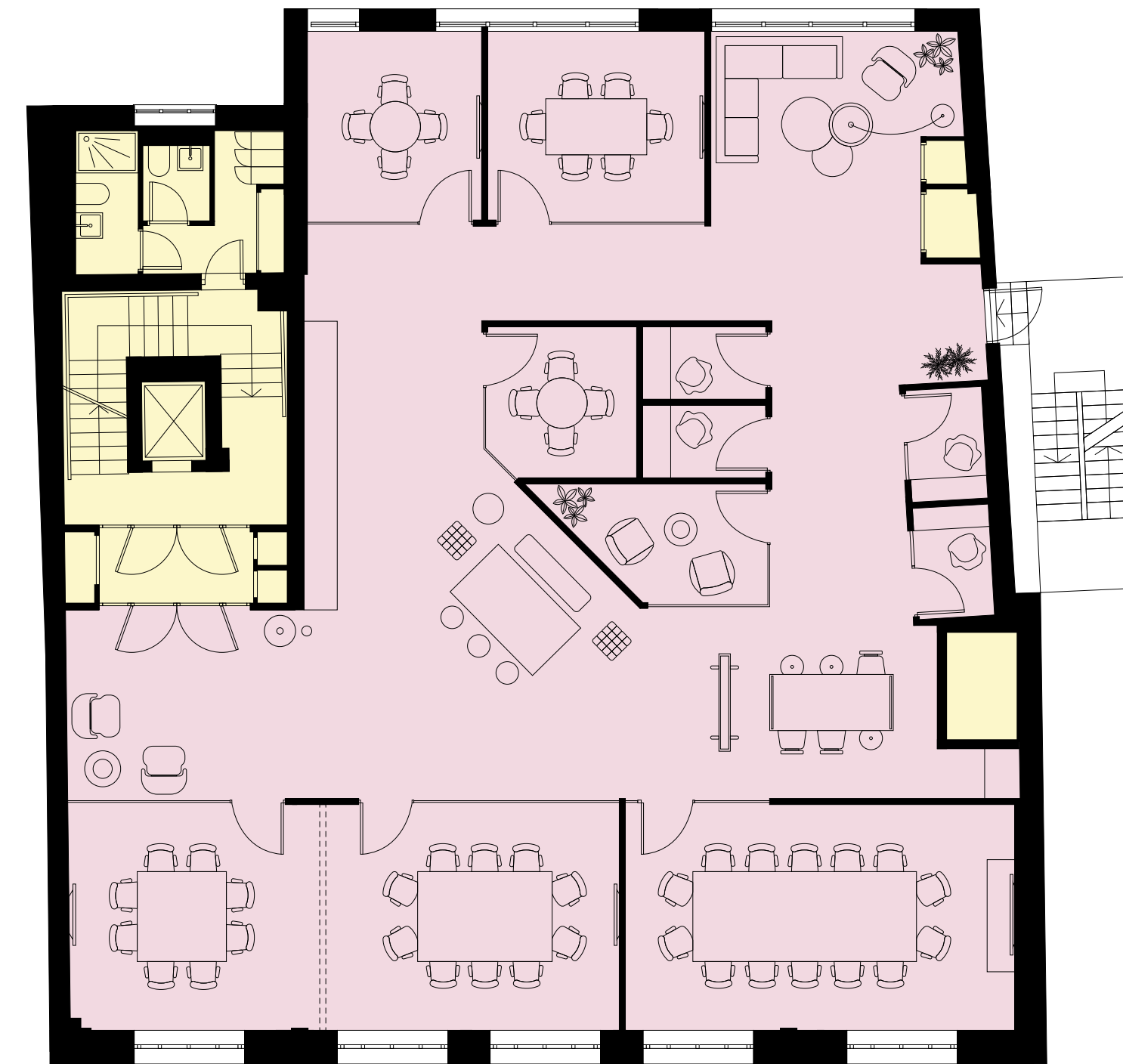


Carnaby Street

# Space plan

## Accommodation

Fixed working positions	0
Flexible working positions	12
Soft Seating	2
Meeting Rooms	7
Flexible Walls	1
Coffee Station	1
Breakout	1
Collaboration Areas	4
Call Rooms	4
Built-In Storage Units	4
Tenant Branding Opportunities	4

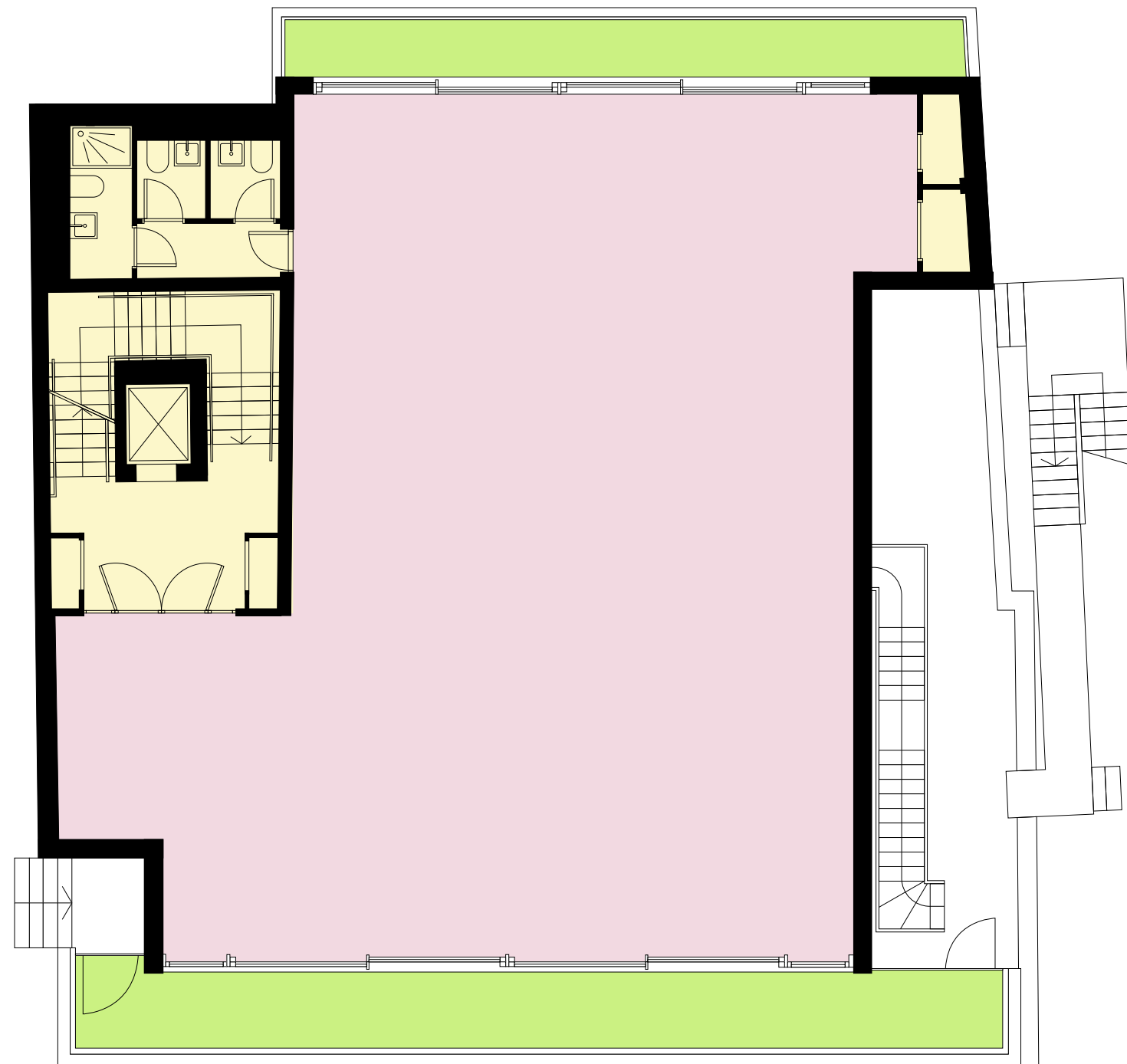


Carnaby Street

# Floor plan

## Fifth floor

Office: 1,851 sq ft  
Terrace: 366 sq ft



Carnaby Street

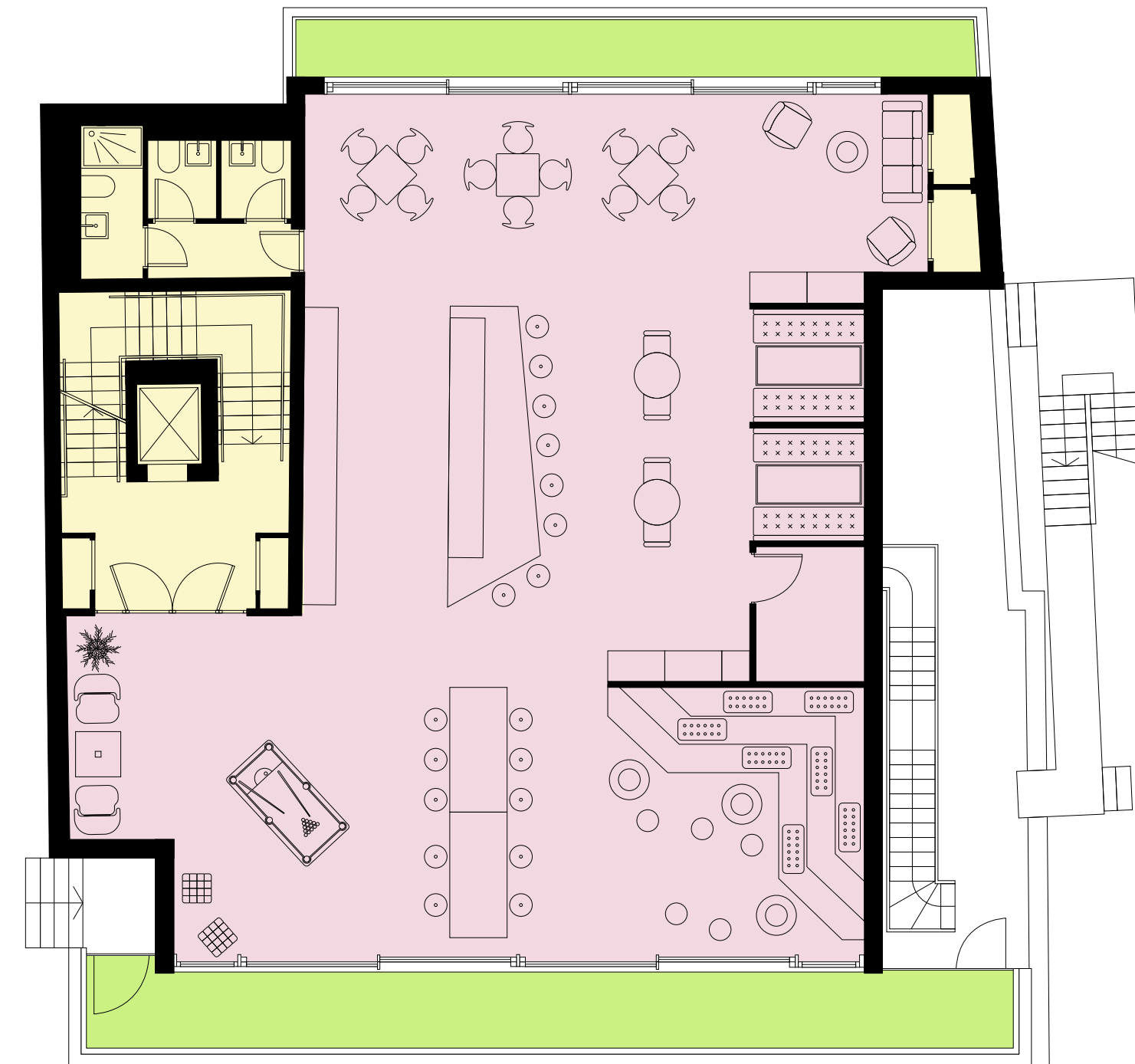


- Terrace
- Office
- Core

# Space plan

## Accommodation

Fixed working positions	0
Flexible working positions	22
Soft Seating	2
Meeting Rooms	0
Tea Point	1
Breakfast Bar	1
Breakout	2
Open Booths	2
Presentation Space	1
Store Room	1
Built-In Storage Units	5
Balcony	2

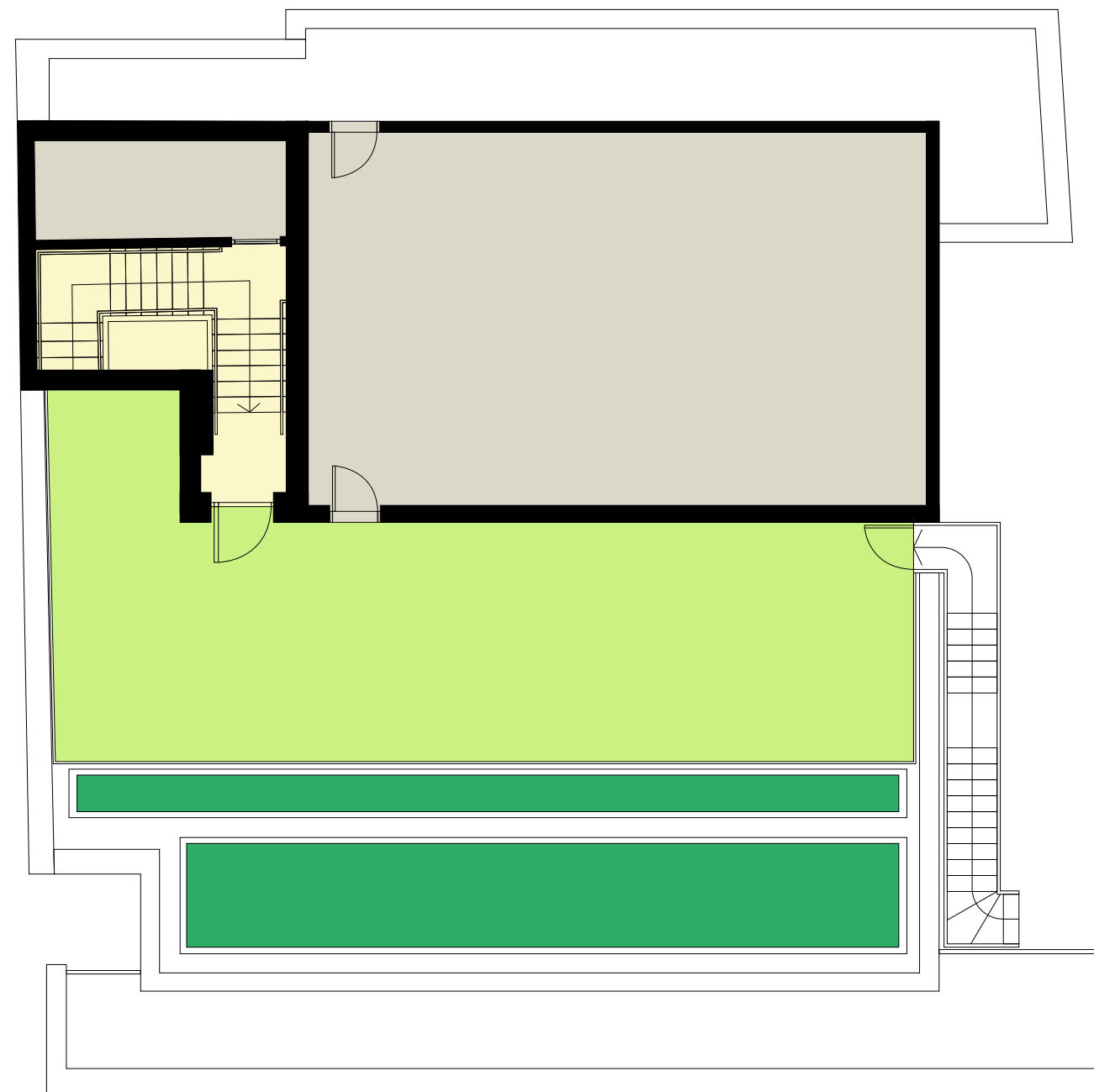


Carnaby Street

# Floor plan

## Communal roof terrace

Terrace: 592 sq ft



Carnaby Street



- Terrace
- Core
- Green roof
- Plant

5 CARNABY STREET



CGI of communal terrace



SOHO HOME



KINGLY COURT



UGLY DUMPLING



GOLDEN SQUARE

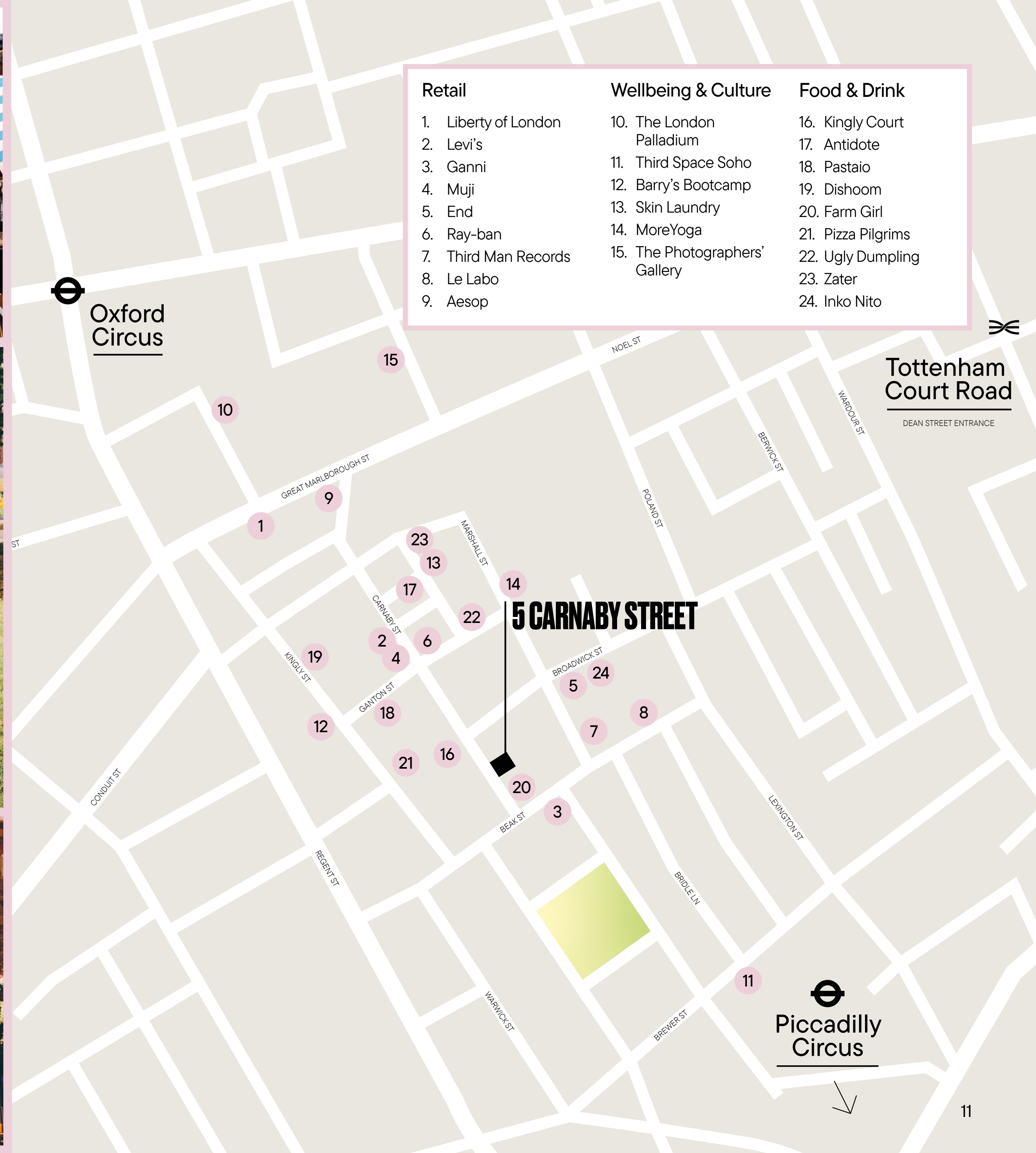


CUBITTS



CARNABY STREET

Retail	Wellbeing & Culture	Food & Drink
1. Liberty of London	10. The London Palladium	16. Kingly Court
2. Levi's	11. Third Space Soho	17. Antidote
3. Ganni	12. Barry's Bootcamp	18. Pastaio
4. Muji	13. Skin Laundry	19. Dishoom
5. End	14. MoreYoga	20. Farm Girl
6. Ray-ban	15. The Photographers' Gallery	21. Pizza Pilgrims
7. Third Man Records		22. Ugly Dumpling
8. Le Labo		23. Zater
9. Aesop		24. Inko Nito



Tottenham Court Road  
DEAN STREET ENTRANCE

5 CARNABY STREET

Piccadilly Circus



On your doorstep

# A stone's throw away

---



The heart of Carnaby. The centre of London. The food. The fashion. The fresh thinking. The place where everyone wants to be and where everyone can be who they want. Carnaby is as exciting, as popular, and as recognizable as it's ever been.

Still setting the trends, still leading the way, linking Mayfair to Covent Garden, Regent Street to the River Thames, not to mention easy transport connections to the whole of London on your doorstep, Carnaby puts you exactly where you need to be.

---

**04 mins**

to Oxford Circus

---

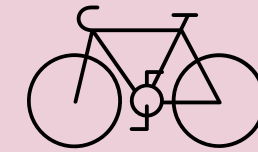
**04 mins**

to Piccadilly Circus

---

**08 mins**

to Tottenham Court Road



---

**08 mins**

to Hyde Park

---

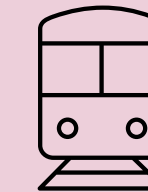
**12 mins**

to Regent's Park

---

**12 mins**

to South Bank



---

**04 mins**

to Liverpool Street

---

**06 mins**

to Paddington

---

**10 mins**

to Victoria

# 5 CARNABY STREET

**RX** LONDON

**Lois Bond**

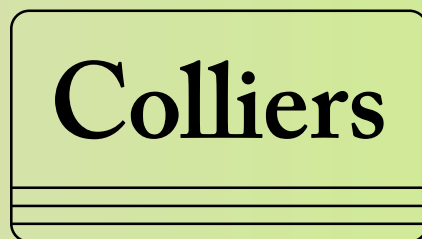
lois.bond@rx.london  
+44(0) 777 325 8589

**Imogen Purvis**

imogen.purvis@rx.london  
+44(0) 737 797 8348

**Paul Smith**

paul.smith@rx.london  
+44(0) 771 146 8891



**Sophie Crosbie**

sophie.crosbie@colliers.com  
+44(0) 793 633 8778

**Charlotte Ashton**

charlotte.ashton@colliers.com  
+44(0) 754 195 8117

**Jamie Quinn**

jamie.quinn@colliers.com  
+44(0) 790 985 8347

© Shaftesbury 2022. All rights reserved.  
All images in this document are computer generated and for indicative purposes only. No part of this brochure  
may be reproduced in any form or by any means without prior written consent from Shaftesbury. September 2022.  
Designed by Stepladder. [stepladderuk.com](http://stepladderuk.com)

**Shaftesbury** **CARNABY**

Designed by Stepladder 2022. [stepladderuk.com](http://stepladderuk.com)