

FLOOR PLAN - PROPOSED

1/A1.0 SCALE = 3/16" = 1'-0"

PLAN NOTES:
1) ALL DIMENSIONS ARE FROM FACE OF STUD TO FACE OF STUD (U.N.O.)

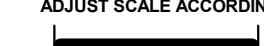
PROPOSED BUILDING FOR:

23-3502

CITY, WISCONSIN; COUNTY OF:

SCALE VERIFICATION

THIS BAR MEASURES 1" ON ORIGINAL.
ADJUST SCALE ACCORDINGLY



NOTICE OF COPYRIGHT
THESE PLANS ARE COPYRIGHTED AND ARE SUBJECT TO
COPYRIGHT PROTECTION AS AN "ARCHITECTURAL WORK" UNDER
SEC. 102 OF THE COPYRIGHT ACT, 17 U.S.C. AS AMENDED
DECEMBER 1990 AND KNOWN AS ARCHITECTURAL WORKS
COPYRIGHT PROTECTION ACT OF 1990. THE PROTECTION
INCLUDES BUT IS NOT LIMITED TO THE OVERALL FORM AS WELL
AS THE ARRANGEMENT AND COMPOSITION OF SPACES AND
ELEMENTS OF THE DESIGN. UNDER SUCH PROTECTION
UNAUTHORIZED USE OF THESE PLANS, WORK OR BUILDING
REPRESENTED, CAN LEGALLY RESULT IN THE CESSATION OF
CONSTRUCTION OR BUILDINGS BEING SEIZED AND/OR MONETARY
COMPENSATION TO BAYLAND BUILDINGS, INC.

JOB NUMBER: *

PROJECT EXECUTIVE: NICK VANLANEN
(920) 680-8110

DRAWN BY: DPO

DATE: 1-18-2024

REVISIONS:

ISSUED FOR: CHECKED DATE:
BY:

- PRELIMINARY
- BID SET
- DESIGN REVIEW
- CHECKSET
- CONSTRUCTION

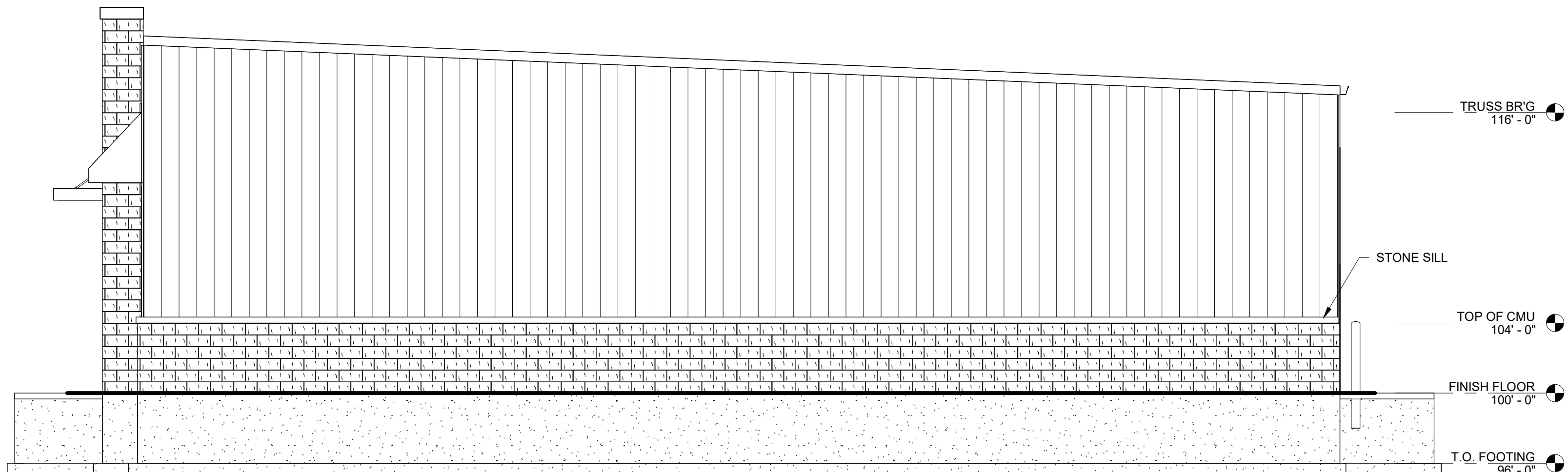
FLOOR PLAN - PROPOSED



A1.0

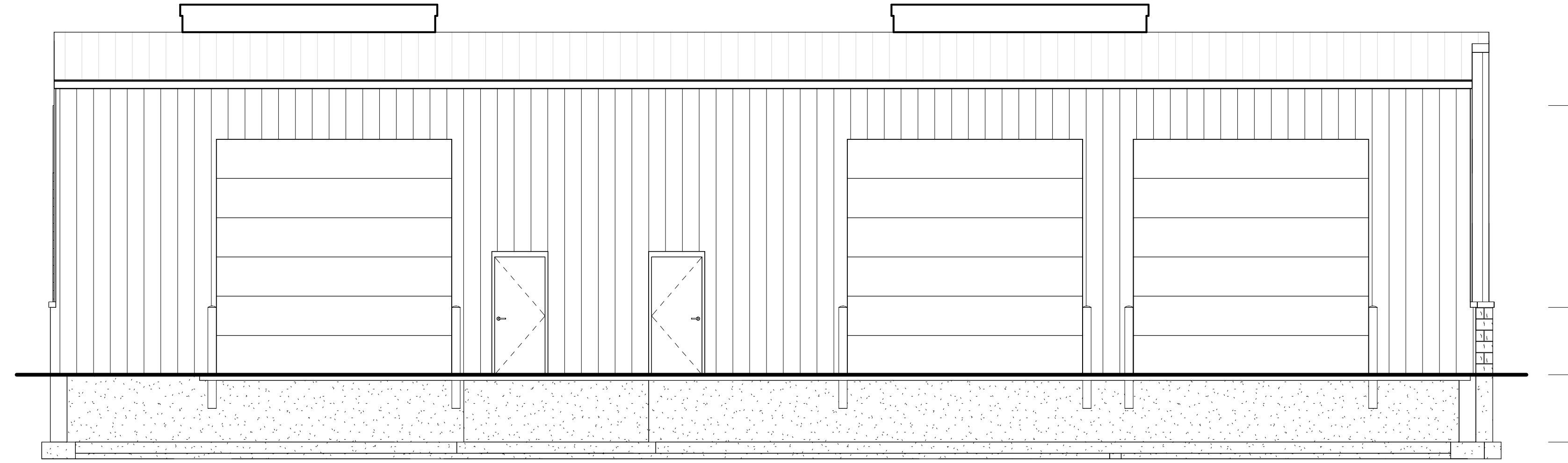
EXTERIOR FINISH LEGEND

MARK	DESCRIPTION
LPS-1	LOCATION: HORIZ. EXTERIOR SIDING MATERIAL: 6" LP SMART SIDING SUPPLIER: LP SMARTSIDE COLOR: VERIFY COMMENTS:
CS-1	LOCATION: CEDAR SHAKES SIDING MATERIAL: 6" CEDAR SHAKE SUPPLIER: VERIFY COLOR: VERIFY COMMENTS:
MT-1	LOCATION: FASCIA TRIMS & SOFFITS MATERIAL: VERIFY SUPPLIER: VERIFY COLOR: VERIFY COMMENTS:
MT-2	LOCATION: RAKE, GUTTERS & TRIMS MATERIAL: VERIFY SUPPLIER: VERIFY COLOR: VERIFY COMMENTS:
SV-1	LOCATION: STONE VENEER MATERIAL: NATURAL CUT STONE SUPPLIER: VERIFY COLOR: VERIFY COMMENTS:
RS-1	LOCATION: ROOF SHINGLES MATERIAL: ASPHALT SHINGLE SUPPLIER: VERIFY COLOR: VERIFY COMMENTS:
MB-1	LOCATION: WALL PANEL MATERIAL: 26GA SEMI-CONCEALED SUPPLIER: VERIFY COLOR: VERIFY COMMENTS:
MR-1	LOCATION: ROOF PANEL MATERIAL: 24GA SSR SUPPLIER: VERIFY COLOR: VERIFY COMMENTS:



BUILDING ELEVATION - NORTH

1/A2.0 SCALE = 3/16" = 1'-0"



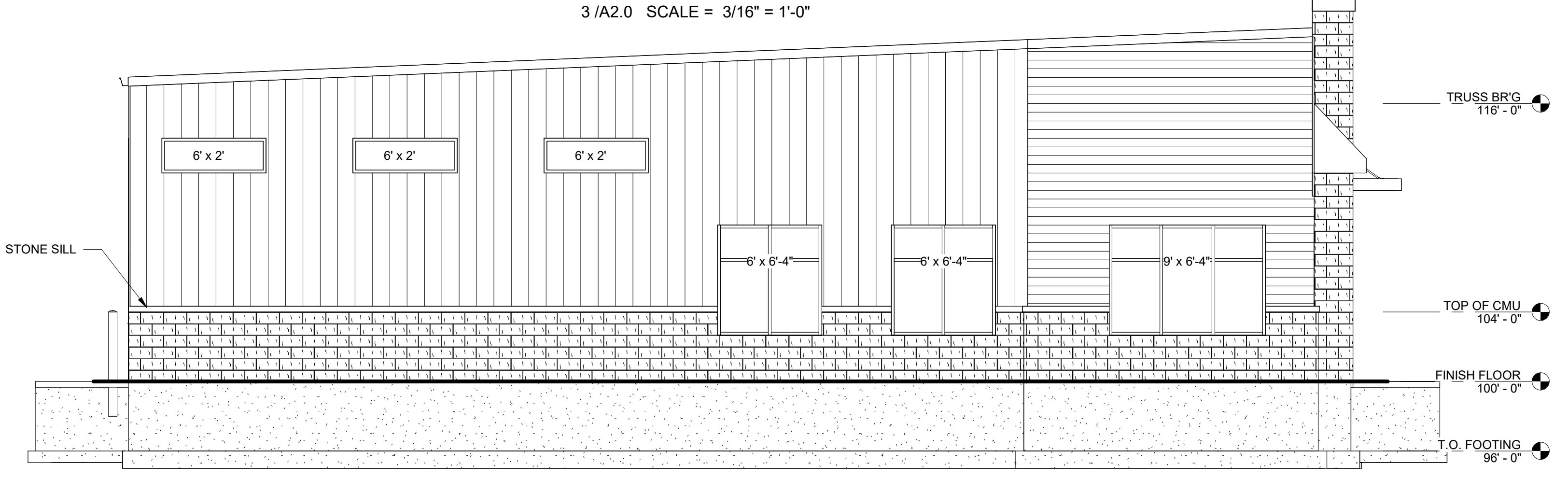
BUILDING ELEVATION - WEST

2/A2.0 SCALE = 3/16" = 1'-0"



BUILDING ELEVATION - EAST

3/A2.0 SCALE = 3/16" = 1'-0"



BUILDING ELEVATION - SOUTH

4/A2.0 SCALE = 3/16" = 1'-0"

PROPOSED BUILDING FOR:
23-3502
 CITY, WISCONSIN; COUNTY OF:

SCALE VERIFICATION

THIS BAR MEASURES 1" ON ORIGINAL.
ADJUST SCALE ACCORDINGLY.

NOTICE OF COPYRIGHT: THESE PLANS ARE COPYRIGHTED AND ARE SUBJECT TO COPYRIGHT PROTECTION AS AN "ARCHITECTURAL WORK" UNDER SEC. 102 OF THE COPYRIGHT ACT, 17 U.S.C. AS AMENDED DECEMBER 1990 AND KNOWN AS ARCHITECTURAL WORKS COPYRIGHT PROTECTION ACT OF 1990. THE PROTECTION INCLUDES BUT IS NOT LIMITED TO THE OVERALL FORM AS WELL AS THE ARRANGEMENT AND COMPOSITION OF SPACES AND ELEMENTS OF THE DESIGN. UNDER SUCH PROTECTION, UNAUTHORIZED USE OF THESE PLANS, WORK OR BUILDING REPRESENTED, CAN LEGALLY RESULT IN THE CESSATION OF CONSTRUCTION OR BUILDINGS BEING SEIZED AND/OR MONETARY COMPENSATION TO BAYLAND BUILDINGS, INC.

JOB NUMBER: *

PROJECT EXECUTIVE: NICK VANLANEN
(920) 680-8110

DRAWN BY: DPO

DATE: 1-18-2024

REVISIONS:

ISSUED FOR: CHECKED DATE: BY:

- PRELIMINARY
- BID SET
- DESIGN REVIEW
- CHECKSET
- CONSTRUCTION

ELEVATION - EXTERIOR

A2.0



3D View 1
1/A2.1 SCALE =



3D View 2
2/A2.1 SCALE =

EXTERIOR FINISH LEGEND

MARK	DESCRIPTION
LPS-1	LOCATION: HORIZ. EXTERIOR SIDING MATERIAL: 6" LP SMART SIDING SUPPLIER: LP SMARTSIDE COLOR: VERIFY COMMENTS:
CS-1	LOCATION: CEDAR SHAKES SIDING MATERIAL: 6" CEDAR SHAKE SUPPLIER: VERIFY COLOR: VERIFY COMMENTS:
MT-1	LOCATION: FASCIA TRIMS & SOFFITS MATERIAL: VERIFY SUPPLIER: VERIFY COLOR: VERIFY COMMENTS:
MT-2	LOCATION: RAKE, GUTTERS & TRIMS MATERIAL: VERIFY SUPPLIER: VERIFY COLOR: VERIFY COMMENTS:
SV-1	LOCATION: STONE VENEER MATERIAL: NATURAL CUT STONE SUPPLIER: VERIFY COLOR: VERIFY COMMENTS:
RS-1	LOCATION: ROOF SHINGLES MATERIAL: ASPHALT SHINGLE SUPPLIER: VERIFY COLOR: VERIFY COMMENTS:
MB-1	LOCATION: WALL PANEL MATERIAL: 26GA SEMI-CONCEALED SUPPLIER: VERIFY COLOR: VERIFY COMMENTS:
MR-1	LOCATION: ROOF PANEL MATERIAL: 24GA SSR SUPPLIER: VERIFY COLOR: VERIFY COMMENTS:

PROPOSED BUILDING FOR:

23-3502

CITY, WISCONSIN; COUNTY OF:

SCALE VERIFICATION

THIS BAR MEASURES 1" ON ORIGINAL.
ADJUST SCALE ACCORDINGLY



NOTICE OF COPYRIGHT
THESE PLANS ARE COPYRIGHTED AND ARE SUBJECT TO
COPYRIGHT PROTECTION AS AN "ARCHITECTURAL WORK" UNDER
SEC. 102 OF THE COPYRIGHT ACT, 17 U.S.C. AS AMENDED
DECEMBER 1990 AND KNOWN AS ARCHITECTURAL WORKS
COPYRIGHT PROTECTION ACT OF 1990. THE PROTECTION
INCLUDES BUT IS NOT LIMITED TO THE OVERALL FORM AS WELL
AS THE ARRANGEMENT AND COMPOSITION OF SPACES AND
ELEMENTS OF THE DESIGN. UNDER SUCH PROTECTION,
UNAUTHORIZED USE OF THESE PLANS, WORK OR BUILDING
REPRESENTED, CAN LEGALLY RESULT IN THE CESSATION OF
CONSTRUCTION OR BUILDINGS BEING SEIZED AND/OR MONETARY
COMPENSATION TO BAYLAND BUILDINGS, INC.

JOB NUMBER: *

PROJECT EXECUTIVE: NICK VANLANEN
(920) 680-8110

DRAWN BY: DPO

DATE: 1-18-2024

REVISIONS:

ISSUED FOR: CHECKED DATE:
BY:

- PRELIMINARY
- BID SET
- DESIGN REVIEW
- CHECKSET
- CONSTRUCTION

ELEVATION - EXTERIOR

A2.1

DOOR SCHEDULE														
NUMBER	DOOR			FRAME TYPE	FIRE RATING	DOOR HARDWARE							GENERAL REMARKS	
	WIDTH	HEIGHT	TYPE			LOCK	PASSAGE	CLOSER	PANIC	PRIVACY	WALL STOP	WEATHER STRIPPING		PUSH - PULL HANDLES
100.1	3'-0"	7'-0"	AD1											
100.2	3'-0"	7'-0"	AD1											
100.3	3'-0"	7'-0"	WD1	HM1										
101.1	3'-0"	7'-0"	WD1	HM1										
102.1	3'-0"	7'-0"	WD1	HM1										
103.1	3'-0"	7'-0"	WD1	HM1										
104.1	3'-0"	7'-0"	WD1	HM1										
105.1	3'-0"	7'-0"	WD1	HM1										
106.1	3'-0"	7'-0"	WD1	HM1										
107.1	3'-0"	7'-0"	WD1	HM1										
108.1	3'-0"	7'-0"	WD1	HM1										
109.1	3'-0"	7'-0"	WD1	HM1										
110.1	3'-0"	7'-0"	MD1	HM1										
110.2	14'-0"	14'-0"	OH1	-										
110.3	14'-0"	14'-0"	OH1	-										
111.1	3'-0"	7'-0"	WD1	HM1										
112.1	3'-0"	7'-0"	AD1											
112.2	3'-0"	7'-0"	AD1											
112.3	3'-0"	7'-0"	MD1	HM1										
112.4	14'-0"	14'-0"	OH1	-										
113.1	6'-0"	7'-0"												

SPECIALTY HARDWARE

1. EXIT ONLY LOCK
2. OVERHEAD STOP
3. FLOOR STOP
4. KICK PLATE
5. SECURITY ENTRY KEYPAD
6. CYLINDER LOCK
7. LATCH GUARD
8. SEALED THRESHOLDS
9. OVERHEAD DRIP CAPS
10. DOUBLE WEATHERSTRIPPING

PROPOSED BUILDING FOR:
23-3502
 CITY, WISCONSIN; COUNTY OF:

SCALE VERIFICATION

THIS BAR MEASURES 1" ON ORIGINAL.
ADJUST SCALE ACCORDINGLY

NOTICE OF COPYRIGHT
THESE PLANS ARE COPYRIGHTED AND ARE SUBJECT TO
COPYRIGHT PROTECTION AS AN "ARCHITECTURAL WORK" UNDER
SEC. 102 OF THE COPYRIGHT ACT, 17 U.S.C. AS AMENDED
DECEMBER 1990 AND KNOWN AS ARCHITECTURAL WORKS
COPYRIGHT PROTECTION ACT OF 1990. THE PROTECTION
INCLUDES BUT IS NOT LIMITED TO THE OVERALL FORM AS WELL
AS THE ARRANGEMENT AND COMPOSITION OF SPACES AND
ELEMENTS OF THE DESIGN. UNDER SUCH PROTECTION
UNAUTHORIZED USE OF THESE PLANS, WORK OR BUILDING
REPRESENTED, CAN LEGALLY RESULT IN THE CESSATION OF
CONSTRUCTION OR BUILDINGS BEING SEIZED AND/OR MONETARY
COMPENSATION TO BAYLAND BUILDINGS, INC.

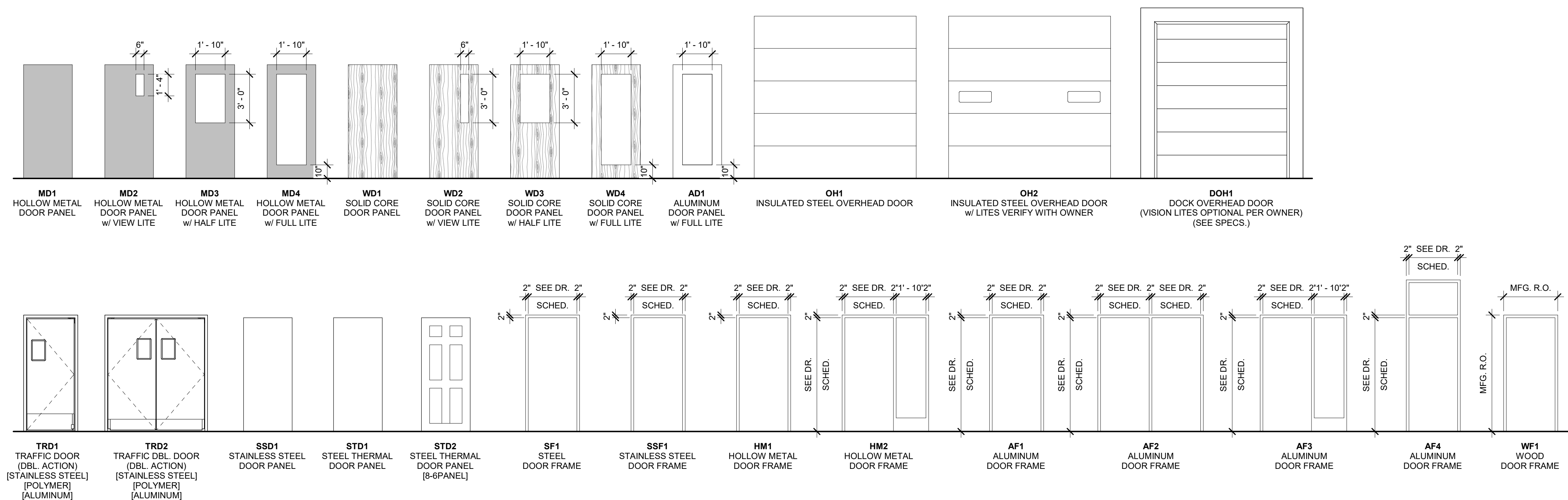
JOB NUMBER: *

PROJECT EXECUTIVE: NICK VANLANEN
(920) 680-8110

DRAWN BY: DPO

DATE: 1-18-2024

REVISIONS:



GENERAL NOTES:

1. ALL WOOD DOOR/WINDOW & CASINGS SPECIES TO BE OAK U.N.O.

ISSUED FOR: CHECKED DATE:
BY:

- PRELIMINARY
- BID SET
- DESIGN REVIEW
- CHECKSET
- CONSTRUCTION

SCHEDULES - DOOR / WINDOW

PROPOSED BUILDING FOR:

23-3502

CITY, WISCONSIN; COUNTY OF:

SCALE VERIFICATION

THIS BAR MEASURES 1" ON ORIGINAL.
ADJUST SCALE ACCORDINGLY

NOTICE OF COPYRIGHT
THESE PLANS ARE COPYRIGHTED AND ARE SUBJECT TO
COPYRIGHT PROTECTION AS AN "ARCHITECTURAL WORK" UNDER
SEC. 102 OF THE COPYRIGHT ACT, 17 U.S.C. AS AMENDED
DECEMBER 1990 AND KNOWN AS ARCHITECTURAL WORKS
COPYRIGHT PROTECTION ACT OF 1990. THE PROTECTION
INCLUDES BUT IS NOT LIMITED TO THE OVERALL FORM AS WELL
AS THE ARRANGEMENT AND COMPOSITION OF SPACES AND
ELEMENTS OF THE DESIGN. UNDER SUCH PROTECTION
UNAUTHORIZED USE OF THESE PLANS, WORK OR BUILDING
REPRESENTED, CAN LEGALLY RESULT IN THE CESSATION OF
CONSTRUCTION OR BUILDINGS BEING SEIZED AND/OR MONETARY
COMPENSATION TO BAYLAND BUILDINGS, INC.

JOB NUMBER: *

PROJECT EXECUTIVE: NICK VANLANEN
(920) 680-8110

DRAWN BY: DPO

DATE: 1-18-2024

REVISIONS:

ISSUED FOR: CHECKED DATE:
BY:

- PRELIMINARY
- BID SET
- DESIGN REVIEW
- CHECKSET
- CONSTRUCTION

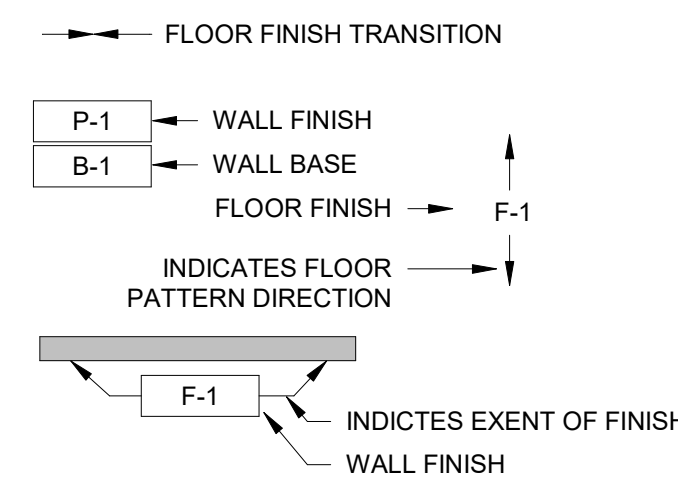
ROOM FINISH PLAN - PROPOSED

A6.1

FINISH GENERAL NOTES

- ALL FINISH SELECTIONS IDENTIFIED IN LEGENDS, SCHEDULES, AND SPECIFICATIONS ARE SUBJECT TO 'OR EQUAL' SUBSTITUTIONS U.N.O. FINAL SELECTIONS TO BE SELECTED BY G.C.
- NOTIFY ARCHITECT OF SCHEDULED FINISHES THAT ARE UNAVAILABLE OR DISCONTINUED AT THE EARLIEST OPPORTUNITY SUCH THAT A SUBSTITUTION CAN BE SELECTED WITHOUT JEOPARDIZING THE CONSTRUCTION SCHEDULE.
- REFER TO THE MATERIAL SCHEDULE FOR MANUFACTURER, PRODUCT/STYLE NAME, COLOR SPECIFICATION.
- INSTALL ALL FINISH MATERIALS IN ACCORDANCE WITH THE MANUFACTURER'S RECOMMENDED SPECIFICATIONS, SURFACE PREPARATION, ADHESIVES AND BACKINGS: INCLUDING WALLCOVERINGS, COATINGS, FLOORING MATERIALS, LAMINATES, ETC.
- THE CONTRACTOR SHALL REPAIR ALL ROUGH FLOOR SLAB UNEVENNESS SUITABLE FOR PROPER FLOOR COVERING INSTALLATION.
- FLOOR MATERIAL TRANSITIONS AT DOOR OPENINGS ARE TO BE CENTERED BELOW THE DOOR IN THE CLOSED POSITION, U.N.O.
- THE PAINTING SUBCONTRACTOR SHALL ENSURE THAT ALL PAINTS COMPLY WITH THE MUNICIPAL & STATE CODES AND BUILDING REGULATIONS FOR LOW VOC EMISSIONS.
- ELECTRICAL SWITCH AND OUTLET COVER PLATES, SURFACE HARDWARE, ETC. SHALL BE INSTALLED AFTER PAINTING AND/OR APPLICATION OF WALL COVERINGS AND SPECIFIED CARPET. STAINED AND PAINTED SURFACES SHALL BE FINISHED SUCH THAT JOINTS/IMPERFECTIONS ARE NOT VISIBLE.
- CONTRACTOR SHALL NOTIFY ARCHITECT IMMEDIATELY OF ANY DISCREPANCIES IN THE FIELD. GC TO GET CLARIFICATION FROM ARCHITECT BEFORE CONTINUING WITH ANY WORK.
- PROVIDE VINYL TRANSITION STRIPS AT ALL FLOORING MATERIAL CHANGES, U.N.O. REFER TO PLAN FOR DETAIL LOCATIONS.
- HARD FLOORING GROUT IS TO BE SEALED WITH MANUFACTURER'S RECOMMENDED SEALERS.
- RUBBER/VINYL BASE SHALL BE STRAIGHT BASE AT ALL LOCATIONS FOR CARPET AND COVE BASE AT TILE AND RESILIENT FLOORS
- ALL ELECTRICAL PANELS IN THE CORRIDORS SHALL BE PAINTED TO MATCH THE ADJACENT WALL FINISH U.N.O.
- PAINT CEILING ACCESS PANELS TO MATCH ADJACENT CEILING FINISH.
- UNDERSIDE OF SOFFITS (WHERE OCCURS) TO BE PAINTED TO RECEIVE FINISH TO MATCH WALL, U.N.O.
- FINISH FLOORING TO EXTEND FROM WALL TO WALL INCLUDING UNDER CABINETS AND UNDERCABINET EQUIPMENT.
- ALL INTERIOR WALL & CEILING FINISHES AND TRIM OF PUBLIC AREAS TO COMPLY WITH CLASS A MATERIAL CLASSIFICATION; FLAME SPREAD RATING 0 TO 25, SMOKE DEVELOPED 200. ALL INTERIOR WALL AND CEILING FINISHES AND TRIM IN NON PUBLIC AREAS TO COMPLY WITH CLASS B MATERIAL CLASSIFICATION; FLAME SPREAD RATING 26-75, SMOKE DEVELOPED 450.
- ALL PAINTED SURFACES ARE TO RECEIVE A PRIME COAT AND A MINIMUM OF TWO COATS FINAL COLOR, U.N.O.
- CARPET CONTRACTOR SHALL VERIFY THAT ALL CARPET OF EACH VARIETY IS TO BE SHIPPED FROM THE SAME DYE-LOT.
- ALL WALLS PAINTED WITH A LATEX PAINT TO HAVE AN EGGSHELL FINISH, U.N.O. REFER TO THE MATERIAL SCHEDULE AND FINISH LEGEND FOR MANUFACTURER'S PRODUCT NAME.
- GYPSUM BOARD CEILINGS SCHEDULED TO RECEIVE PAINT SHALL HAVE A FLAT FINISH, U.N.O.
- PROVIDE ARCHITECT WITH A MINIMUM OF (3) 8" X 10" BRUSH-OUTS OF EACH COLOR AND FINISH FOR ARCHITECT'S APPROVAL PRIOR TO APPLICATION.
- PAINTS AND COATINGS : APPLIED TO INTERIOR WALLS AND CEILINGS MUST NOT EXCEED THE VOLATILE ORGANIC COMPOUND (VOC) CONTENT LIMITS ESTABLISHED IN GREEN SEAL STANDARD GS-11, PAINTS, 1ST EDITION, MAY 20, 1993.
- ANTI-CORROSIVE AND ANTI-RUST PAINTS: APPLIED TO INTERIOR FERROUS METAL SUBSTRATES MUST NOT EXCEED THE VOC CONTENT LIMIT OF 250 G/L ESTABLISHED IN GREEN SEAL STANDARD GC-03, ANTI-CORROSIVE PAINTS, 2ND EDITION, JANUARY 7, 1997.
- CLEAR WOOD FINISHES, FLOOR COATINGS, STAINS, PRIMERS, SEALERS, AND SHELLACS: APPLIED TO INTERIOR ELEMENTS MUST NOT EXCEED THE VOC CONTENT LIMITS ESTABLISHED FOR THOSE COATING TYPES IN SOUTH COAST AIR QUALITY MANAGEMENT DISTRICT (SCAQM) RULE 1113, ARCHITECTURAL COATINGS, AMENDED FEBRUARY 5, 2016.

FINISH PLAN LEGEND



FINISH PLAN KEYNOTES

- NO FINISH WORK IN THIS AREA.
- CARPET TO BE INSET WITHIN CERAMIC TILE. VERIFY DIMS. AS SHOWN.
- PROVIDE 1/8" THICK ZINC TRANSITION STRIP BETWEEN CERAMIC TILE AND CARPET. FEATHER FLOORING BENEATH CARPET AS REQUIRED FOR A SMOOTH TRANSITION.
- PROVIDE VINYL STRIP AT CARPET TO VINYL TRANSITION. SUBMIT COLOR SAMPLES TO ARCHITECT FOR APPROVAL.
- PATH/EXTEND FINISHES WITHIN COMMON CORRIDOR. ANY NEW FLOOR AND/OR WALL FINISHES TO MATCH EXISTING FOR A SEAMLESS TRANSITION.

MATERIAL LEGEND

FLOORING FINISH

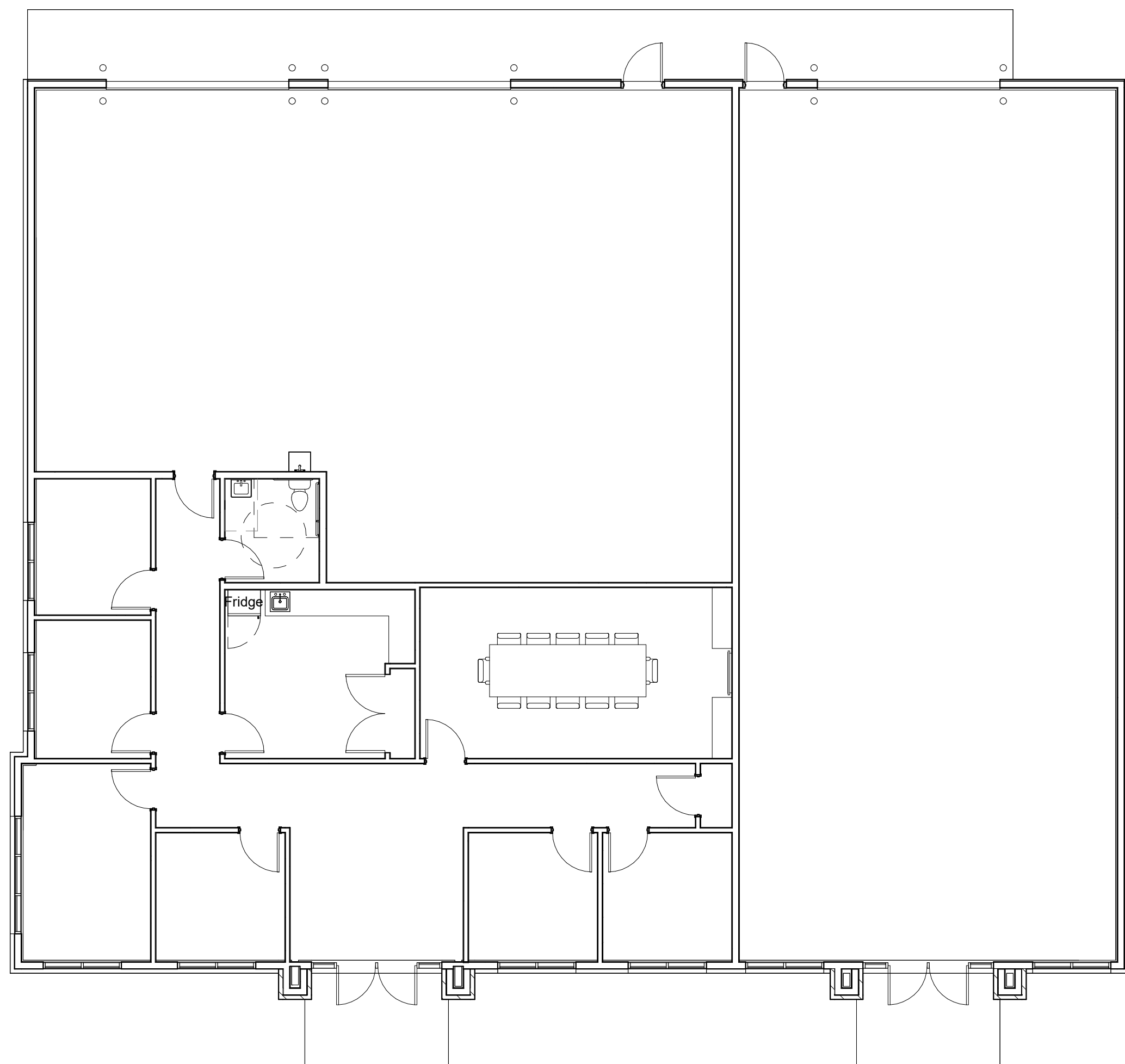
MARK	DESCRIPTION
C-1	FINISH: CARPET MANUF: VERIFY STYLE: VERIFY COLOR: VERIFY INSTALLATION METHOD: VERIFY REMARKS:
CPT-1	FINISH: CARPET TILE MANUF: VERIFY STYLE: VERIFY COLOR: VERIFY INSTALLATION METHOD: VERIFY REMARKS: VERIFY
CT-1	FINISH: CERAMIC TILE MANUF: VERIFY STYLE: VERIFY COLOR: VERIFY INSTALLATION METHOD: VERIFY REMARKS: VERIFY
VC-1	FINISH: VINYL COVE TILE MANUF: VERIFY STYLE: VERIFY COLOR: VERIFY INSTALLATION METHOD: VERIFY REMARKS: VERIFY
QT-1	FINISH: QUARRY TILE MANUF: VERIFY STYLE: VERIFY COLOR: VERIFY INSTALLATION METHOD: VERIFY REMARKS: VERIFY
LVT-1	FINISH: LUXURY VINYL TILE MANUF: VERIFY STYLE: VERIFY COLOR: VERIFY INSTALLATION METHOD: VERIFY REMARKS: VERIFY
LVP-1	FINISH: LUXURY VINYL PLANK MANUF: VERIFY STYLE: VERIFY COLOR: VERIFY INSTALLATION METHOD: VERIFY REMARKS: VERIFY
CSV-1	FINISH: COMMERCIAL SHEET VINYL MANUF: VERIFY STYLE: VERIFY COLOR: VERIFY INSTALLATION METHOD: VERIFY REMARKS: VERIFY
WD-1	FINISH: HARDWOOD MANUF: VERIFY STYLE: VERIFY COLOR: VERIFY INSTALLATION METHOD: VERIFY REMARKS: VERIFY
EP-1	FINISH: EPOXY MANUF: VERIFY STYLE: [FLAKED] [SOLID COLOR] COLOR: VERIFY INSTALLATION METHOD: VERIFY REMARKS: VERIFY
EP-2	FINISH: EPOXY (QUARTZ) MANUF: VERIFY STYLE: [FLAKED] [SOLID COLOR] COLOR: VERIFY INSTALLATION METHOD: VERIFY REMARKS: VERIFY
CONC-1	FINISH: CONCRETE MANUF: VERIFY STYLE: SMOOTH TROWEL COLOR: VERIFY INSTALLATION METHOD: VERIFY REMARKS: SEALER APPLIED U.N.O.
CONC-2	FINISH: CONCRETE MANUF: VERIFY STYLE: SMOOTH TROWEL/ STAINED COLOR: VERIFY INSTALLATION METHOD: VERIFY REMARKS: SEALER APPLIED U.N.O.
CONC-3	FINISH: CONCRETE MANUF: VERIFY STYLE: SMOOTH TROWEL/ POLISHED COLOR: VERIFY INSTALLATION METHOD: [800] [1000] [1500] GRIT REMARKS: SEALER APPLIED U.N.O.
EXIST-FLR	EXISTING FLOOR FINISH CONDITIONS

WALL BASE FINISH

MARK	DESCRIPTION
VB-1	FINISH: VINYL BASE MANUF: VERIFY STYLE: 4" HIGH COLOR: VERIFY INSTALLATION METHOD: VERIFY REMARKS:
VB-2	FINISH: VINYL BASE MANUF: VERIFY STYLE: 6" HIGH COLOR: VERIFY INSTALLATION METHOD: VERIFY REMARKS:
WB-1	FINISH: WOOD BASE MANUF: VERIFY STYLE: 3" HIGH COLOR: VERIFY INSTALLATION METHOD: VERIFY REMARKS:
CB-1	FINISH: CARPET BASE MANUF: VERIFY STYLE: VERIFY HEIGHT COLOR: VERIFY INSTALLATION METHOD: VERIFY REMARKS:
CTB-1	FINISH: CERAMIC TILE BASE MANUF: VERIFY STYLE: 4" HIGH COLOR: VERIFY INSTALLATION METHOD: VERIFY REMARKS:
QTB-1	FINISH: QUARRY TILE BASE MANUF: VERIFY STYLE: VERIFY HEIGHT COLOR: VERIFY INSTALLATION METHOD: VERIFY REMARKS:
EB-1	FINISH: EPOXY BASE MANUF: VERIFY STYLE: HEIGHT [2"] [4"] [6"] COLOR: VERIFY INSTALLATION METHOD: VERIFY REMARKS:
EXIST-WB	EXISTING WALL BASE FINISH CONDITIONS

WALL FINISH

MARK	DESCRIPTION
BLS-1	FINISH: BANDED LINER SYSTEM MANUF: VERIFY STYLE: VERIFY COLOR: VERIFY INSTALLATION METHOD: VERIFY REMARKS:
P-1	FINISH: PAINTED DRYWALL MANUF: VERIFY STYLE: [LIGHT SKIP] [LEVEL 4] COLOR: VERIFY INSTALLATION METHOD: VERIFY REMARKS:
P-2	FINISH: PAINTED PLASTER MANUF: VERIFY STYLE: VERIFY COLOR: VERIFY INSTALLATION METHOD: VERIFY REMARKS:
P-3	FINISH: PAINTED BLOCK MANUF: VERIFY STYLE: VERIFY COLOR: VERIFY INSTALLATION METHOD: VERIFY REMARKS:
FRP-1	FINISH: FRP MANUF: VERIFY STYLE: [SMOOTH] [TEXTURED] COLOR: VERIFY INSTALLATION METHOD: VERIFY REMARKS: VERIFY 1/2" GYPSUM PLYWD
LP-1	FINISH: 29 GA LINER PANEL MANUF: VERIFY STYLE: VERIFY COLOR: VERIFY INSTALLATION METHOD: VERIFY REMARKS:
PW-1	FINISH: PLYWOOD MANUF: VERIFY STYLE: [AC #1] [U LAY #3] THICKNESS: VERIFY COLOR: VERIFY INSTALLATION METHOD: VERIFY REMARKS: [FEW PLUGS, SANDED 1 SIDE] [LOTS OF PLUGS, NOT SANDED]
CWT-1	FINISH: CERAMIC WALL TILE MANUF: VERIFY STYLE: VERIFY COLOR: VERIFY INSTALLATION METHOD: VERIFY REMARKS: VERIFY HEIGHT
VWC-1	FINISH: VINYL WALL COVERING MANUF: VERIFY STYLE: VERIFY COLOR: VERIFY INSTALLATION METHOD: VERIFY REMARKS: VERIFY HEIGHT
WWC-1	FINISH: WOOD WAINSCOT MANUF: VERIFY STYLE: VERIFY COLOR: VERIFY INSTALLATION METHOD: VERIFY REMARKS: VERIFY HEIGHT
PVC-1	FINISH: PVC PANEL MANUF: VERIFY STYLE: CORRUGATED COLOR: VERIFY INSTALLATION METHOD: VERIFY REMARKS: VERIFY HEIGHT
PVC-2	FINISH: T&G SMOOTH PVC LINER MANUF: VERIFY STYLE: CORRUGATED COLOR: VERIFY INSTALLATION METHOD: VERIFY REMARKS: [w/ 1/2" PLYWD BACKER]
PVC-3	FINISH: STAY-IN-PLACE PVC NUFORM PLASTIC CONC. FILLED FORM MANUF: VERIFY STYLE: CORRUGATED COLOR: VERIFY INSTALLATION METHOD: VERIFY REMARKS: [w/ 1/2" PLYWD BACKER]
EXP-WF	EXPOSED WALL/ STRUCTURE
EXIST-WF	EXISTING WALL FINISH CONDITIONS



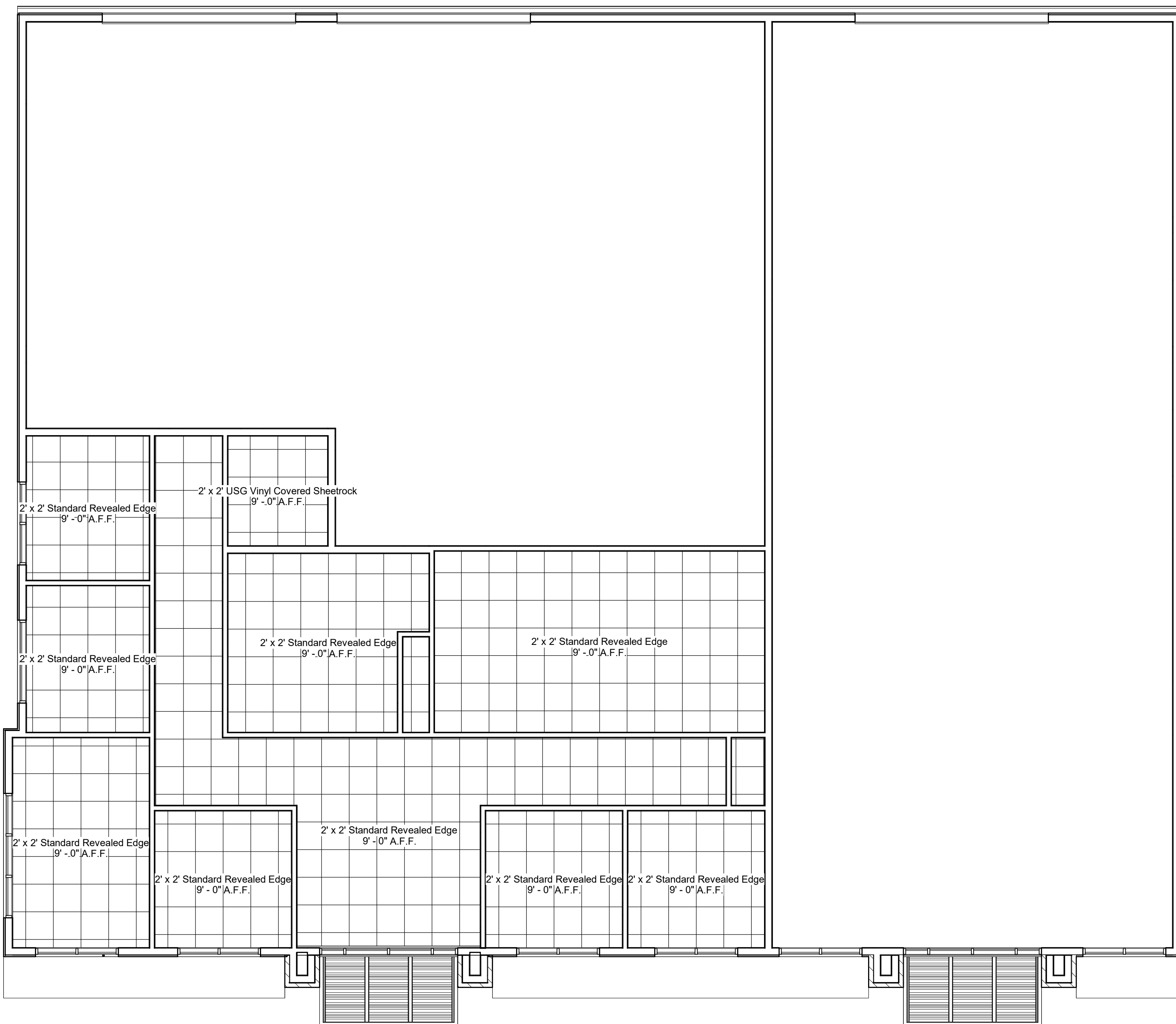
FLOOR PLAN - FINISHED FLOOR PLAN

1/A6.1 SCALE = 1/8" = 1'-0"

MATERIAL LEGEND

CEILING FINISH

MARK	DESCRIPTION
BLS-1	FINISH: BANDED LINER SYSTEM MANUF: VERIFY STYLE: VERIFY COLOR: VERIFY INSTALLATION METHOD: VERIFY REMARKS:
P-1	FINISH: PAINTED DRYWALL MANUF: VERIFY STYLE: [LIGHT SKIP] [LEVEL 4] COLOR: VERIFY INSTALLATION METHOD: VERIFY REMARKS:
P-2	FINISH: PAINTED PLASTER MANUF: VERIFY STYLE: VERIFY COLOR: VERIFY INSTALLATION METHOD: VERIFY REMARKS:
FRP-1	FINISH: FRP MANUF: VERIFY STYLE: [SMOOTH] [TEXTURED] COLOR: VERIFY INSTALLATION METHOD: VERIFY REMARKS: VERIFY 1/2" GYPSUM/ PLYWD
LP-1	FINISH: 29 GA LINER PANEL MANUF: VERIFY STYLE: VERIFY COLOR: VERIFY INSTALLATION METHOD: VERIFY REMARKS:
PW-1	FINISH: PLYWOOD MANUF: VERIFY STYLE: [AC #1] [U LAY #3] THICKNESS: VERIFY COLOR: VERIFY INSTALLATION METHOD: VERIFY REMARKS: [FEW PLUGS, SANDED 1 SIDE] [LOTS OF PLUGS, NOT SANDED]
ACT-1	FINISH: SUSPENDED ACOUSTICAL CEILING SYSTEM MANUF: VERIFY STYLE: [2x2] [2x4] STANDARD REVEALED EDGE COLOR: VERIFY INSTALLATION METHOD: VERIFY REMARKS:
VCDW-1	FINISH: SUSPENDED ACOUSTICAL CEILING SYSTEM MANUF: VERIFY STYLE: [2x2] [2x4] USG VINYL COVERED SHEETROCK COLOR: VERIFY INSTALLATION METHOD: VERIFY REMARKS:
PVC-1	FINISH: PVC PANEL MANUF: VERIFY STYLE: CORRUGATED COLOR: VERIFY INSTALLATION METHOD: VERIFY REMARKS: VERIFY HEIGHT
PVC-2	FINISH: T&G SMOOTH PVC LINER MANUF: VERIFY STYLE: CORRUGATED COLOR: VERIFY INSTALLATION METHOD: VERIFY REMARKS: [w/ 1/2" PLYWD BACKER]
EXP-CF	EXPOSED CEILING/ STRUCTURE
EXIST-CF	EXISTING CEILING FINISH CONDITIONS



RCP - OVERALL
1/A6.2 SCALE = 3/16" = 1'-0"

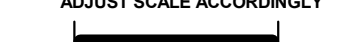
PROPOSED BUILDING FOR:

23-3502

CITY, WISCONSIN; COUNTY OF:

SCALE VERIFICATION

THIS BAR MEASURES 1" ON ORIGINAL.
ADJUST SCALE ACCORDINGLY



NOTICE OF COPYRIGHT
THESE PLANS ARE COPYRIGHTED AND ARE SUBJECT TO
COPYRIGHT PROTECTION AS AN "ARCHITECTURAL WORK" UNDER
SEC. 102 OF THE COPYRIGHT ACT, 17 U.S.C. AS AMENDED
DECEMBER 1990 AND KNOWN AS ARCHITECTURAL WORKS
COPYRIGHT PROTECTION ACT OF 1990. THE PROTECTION
INCLUDES BUT IS NOT LIMITED TO THE OVERALL FORM AS WELL
AS THE ARRANGEMENT AND COMPOSITION OF SPACES AND
ELEMENTS OF THE DESIGN. UNDER SUCH PROTECTION,
UNAUTHORIZED USE OF THESE PLANS, WORK OR BUILDING
REPRESENTED, CAN LEGALLY RESULT IN THE CESSATION OF
CONSTRUCTION OR BUILDINGS BEING SEIZED AND/OR MONETARY
COMPENSATION TO BAYLAND BUILDINGS, INC.

JOB NUMBER: *

PROJECT EXECUTIVE: NICK VANLANEN
(920) 680-8110

DRAWN BY: DPO

DATE: 1-18-2024

REVISIONS:

ISSUED FOR: CHECKED DATE:
BY:

- PRELIMINARY
- BID SET
- DESIGN REVIEW
- CHECKSET
- CONSTRUCTION

REFLECTED CEILING PLAN -
PROPOSED

A6.2