



58 Mosley Street, Manchester, M2 3HZ

Retail/Leisure unit available to let.

Summary

Tenure	To Let
Available Size	2,684 sq ft / 249.35 sq m
Rent	£85,000 per annum
Business Rates	Upon Enquiry
EPC Rating	Upon enquiry

Key Points

- Extremely High Footfall Location
- Suitable for a variety of uses
- Between traditional office area and Chinatown
- Short walk from Piccadilly Gardens and St Peters Square Tram Stop

58 Mosley Street, Manchester, M2 3HZ

Summary

Available Size	2,684 sq ft
Rent	£85,000 per annum
Business Rates	Upon Enquiry
EPC Rating	Upon enquiry

Description

Glazed Frontage- Access via double doors onto the pavement. Unit is currently client facing with the Job Centre Plus as the current tenant. They will have vacated by October 2024.

Location

Located on Mosley Street, a busy thoroughfare linking Piccadilly Gardens and St Peter's Square. Close to Manchester's retail and leisure occupiers such as Brewski Mosley Street, Wagamama, Sainsburys, Six by Nico, Greggs. Mosley Street sits on the edge of the business district and Chinatown.

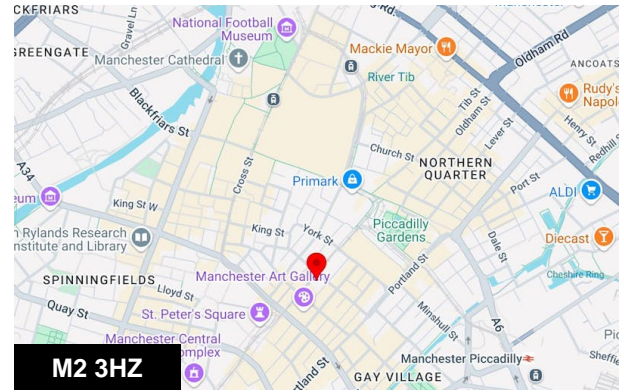
Accommodation

The accommodation comprises the following areas:

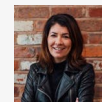
Name	sq ft	sq m	Availability
Ground - Ground Floor	2,684	249.35	Available
Total	2,684	249.35	

Rates

From 1st April 2024, the 2024/25 retail, hospitality and leisure business rates relief scheme will provide occupied retail, hospitality and leisure properties with a 75% relief up to a cash cap limit of £110,000 per business. More detail including rules on eligibility can be found at www.gov.uk



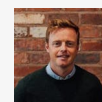
Viewing & Further Information



Nicola Harrington

07971 183 165

nicola@sixteenrealestate.com



Alex Haigh

07737 910 932

alex@sixteenrealestate.com

Agents Note: Under Money Laundering Regulations, we are obliged to verify the identity of a proposed purchaser/tenant once a sale/letting has been agreed and prior to instructing solicitors. This is to help combat fraud and money laundering and the requirements are contained in statute. An email will be sent to the proposed purchaser/tenant once the terms have been agreed.

Misrepresentation Act: Sixteen Real Estate for themselves and for the vendors or lessors of this property, whose agents they are give notice that: a) all particulars are set out as general outline only for the guidance of intending purchasers or lessees, and do not comprise part of an offer or contract; b) all descriptions, dimensions, references to condition and necessary permissions for use and occupation, and other details are given in good faith and are believed to be correct but any intending purchasers or tenants should not rely on them as statements or representations of fact but must satisfy themselves by inspection or otherwise as to the correctness of each of them; c) no person in the employment of Sixteen Real Estate has any authority to make any representation of warranty whatsoever in relation to this property. Generated on 10/09/2024

Manchester, 58 Mosley Street, Manchester, M2

