


For further information
please contact:


01908 611408


73 High Street, Newport
Pagnell, Milton Keynes,
MK16 8AB


To Let

London Road, Stony Stratford, Milton Keynes, MK11 1JN

 £25,000 Per Annum

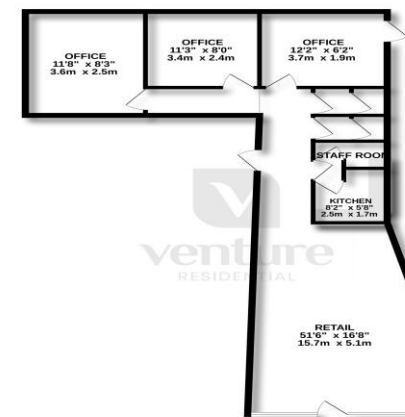
 1,447 Sq Ft / 134.43 Sq M

 Prominent Premises on an established retail parade
with Class E use.

 Former hairdressers, the unit benefits from
fully glazed frontage, front retail area with rear
offices, WC, kitchen and staff room.



GROUND FLOOR
1447 sq.ft. (134.4 sq.m.) approx.





For further information
please contact:

01908 611408
73 High Street, Newport
Pagnell, Milton Keynes,
MK16 8AB

London Road, Stony Stratford, Milton Keynes, MK11 1JN

Location

Stony Stratford is located approximately 5 miles to the north west of Milton Keynes on the border of Northamptonshire. The A5 and M1 are within easy reach providing access to London and the north. There are main line railway stations within 5 miles at Wolverton and Milton Keynes Central.

Terms & Tenure

The premises are available to let at a rental of £25,000 per annum exclusive.

Accommodation

Retail Space:	866 Sq. ft	80.4 Sq M
Ancillary:	157 Sq. ft	14.5 Sq M
Offices:	270 Sq. ft	25 Sq M

EPC

The EPC rating for the property is C.

Rates

Rateable Value TBC. The rates payable may be affected by transitional arrangements. Interested parties should call the local Rating Authority for further advice.

VAT

All figures are quoted exclusive of VAT, purchasers and lessees must satisfy themselves as to the applicable VAT position, seeking appropriate professional advice.

Costs

Each party is to be responsible for their own legal costs.

Viewing

Strictly by appointment only please contact:

Chloe Humphreys chloe.humphreys@stimpsonseves.co.uk