

Tel: 01844 261121
Web: www.fieldscommercial.co.uk
Email: enquiries@fields-property.co.uk

FIELDS

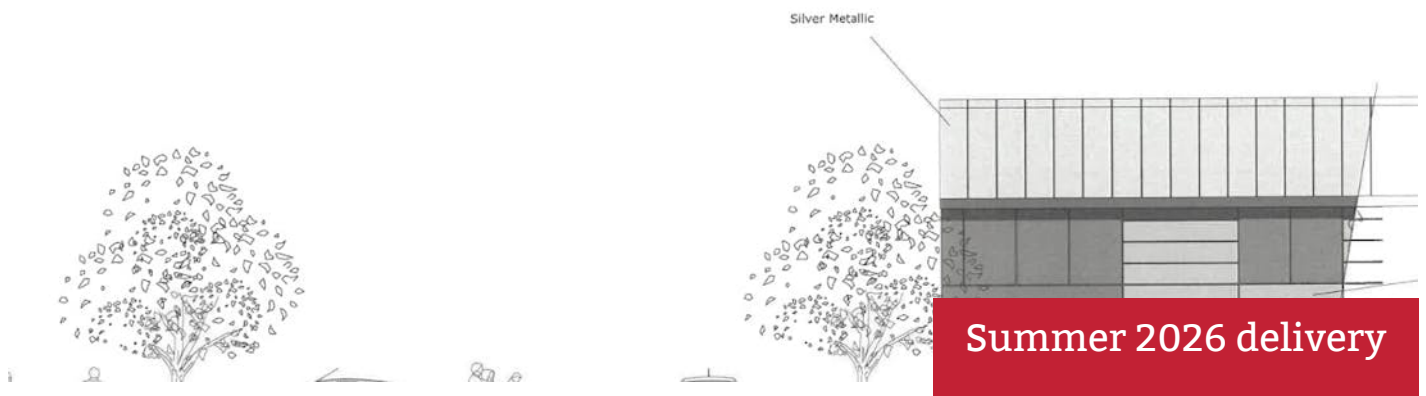
commercial property
land and new homes

To Let

2-6 Jefferson Way, Thame, OX9 3SZ



h



Convenience Store / Children's Nursery / Trade Counter
Opportunities With Planning For Summer 2026 Delivery In
Prominent Ring Road Location.

Size: 1,970 - 10,000 Sq Ft

Fields Commercial | 5a Cornmarket | Thame | Oxfordshire | OX9 3DX

Messrs Fields themselves and for the vendors or lessors of this property whose agents they are given notice that: [1] the particulars are in good faith and are set out as a general guide only and do not constitute any part of contract; [2] no person in the employment of Messrs Fields has any authority to make or give any responsibility or warranty whatever in relation to this property.
Generated on 05/01/2026





Features:

- Convenience store / Children's Nursery / Trade Counter opportunities
- From 1,970 Sq ft to 10,000 Sq ft GIA
- Prominent Ring Road Location
- New conversion for summer 2026 delivery
- Trade counter location

EPC - EPC exempt - Due for demolition

Location

Prominent location on the ring road and the corner of Jefferson Way, on the southern side of Thame, a short distance away from the Town Centre and all its amenities, allowing easy access to Junction 6 of the M40 motorway only approx. 6 miles away.

Description

Convenience Store / Children's Nursery / Trade Counter opportunities.

A new conversion scheme for summer 2026 comprising units of 4,200 Sq ft and 5,800 Sq ft with planning permission granted.

Alternative scheme comprising 4 units, 2 units of approx. 1,970 Sq ft and 2 units of approx. 2,950 Sq ft.

Portal frame building with insulated composite panels, with scope for mezzanine floor if required.

Unit 1 Convenience Store: 4,800 Sq ft approx. & 14 car spaces

Unit 2 Children's Nursery: 5,200 Sq ft approx. & 13 car spaces

Rates

The development is located in South Oxfordshire rating authority.

Rateable value: To be assessed.

Rates payable: To be assessed.

Terms

New leases available.

Rent on application.

Viewings

Strictly by appointment with Fields.