

CROSSLAND OTTER HUNT

3-4 John Princes Street,
London,
W1G 0JL

Economical office close to Oxford
Circus.
Lease with rolling breaks from
December 2026

1,138 sq ft (105.72 sq m)

020 7408 1114
www.coh.eu



CROSSLAND OTTER HUNT

3-4 John Princes Street,
London,
W1G 0JL

Economical office close to Oxford
Circus.

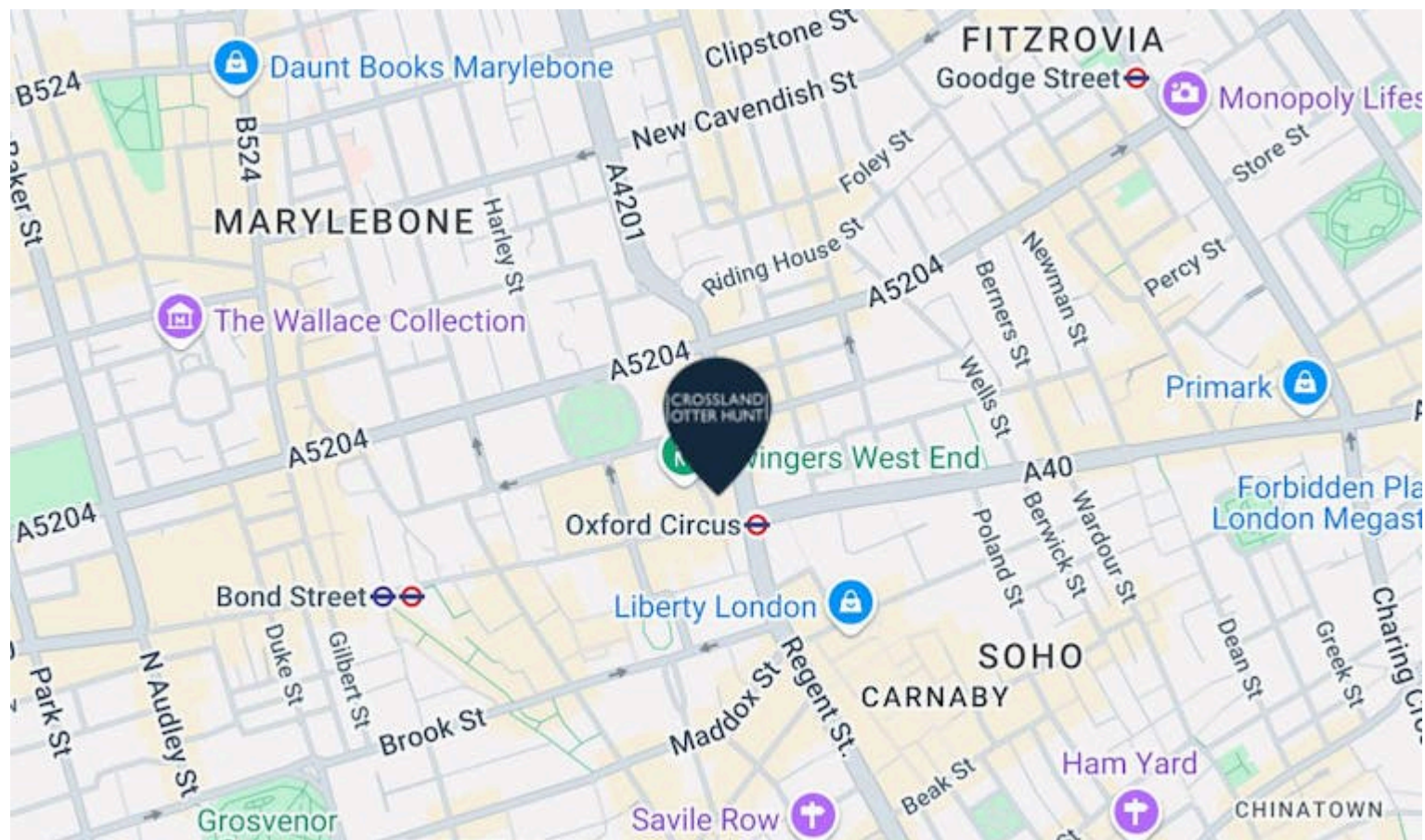
Lease with rolling breaks from
December 2026

1,138 sq ft (105.72 sq m)

[View Online →](#)

020 7408 1114

www.coh.eu



Nearest Stations



Oxford Circus
(0.1 Miles)

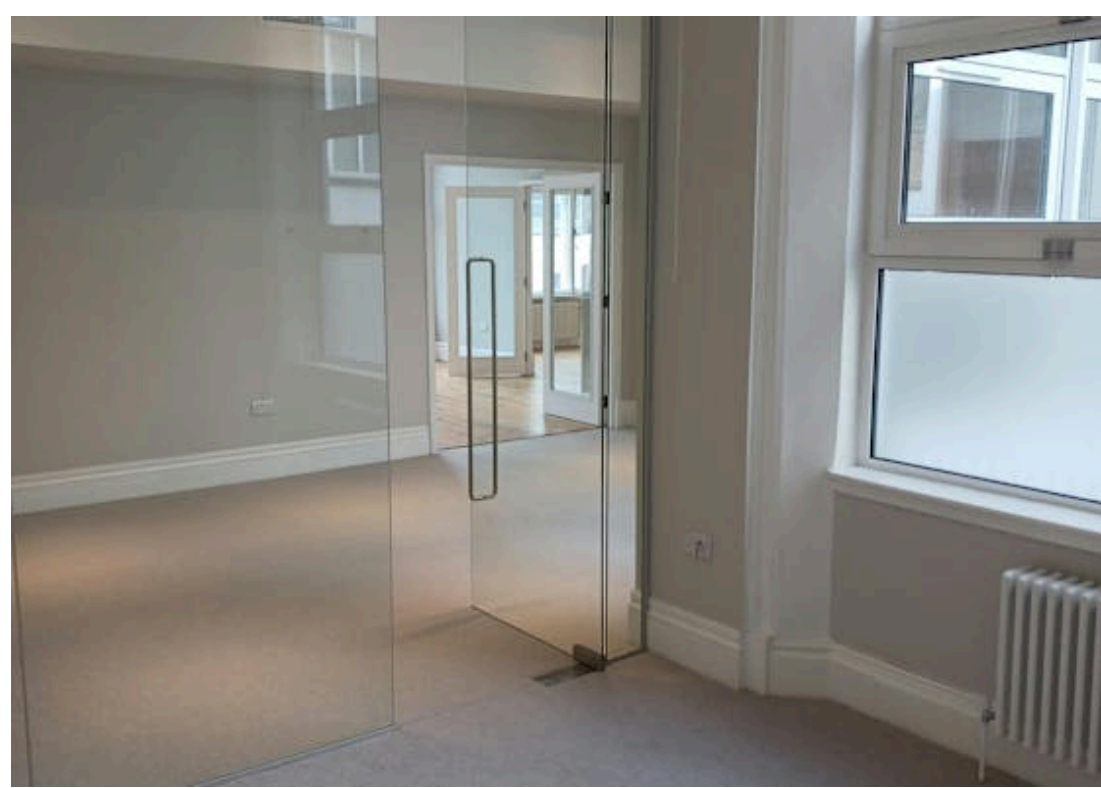
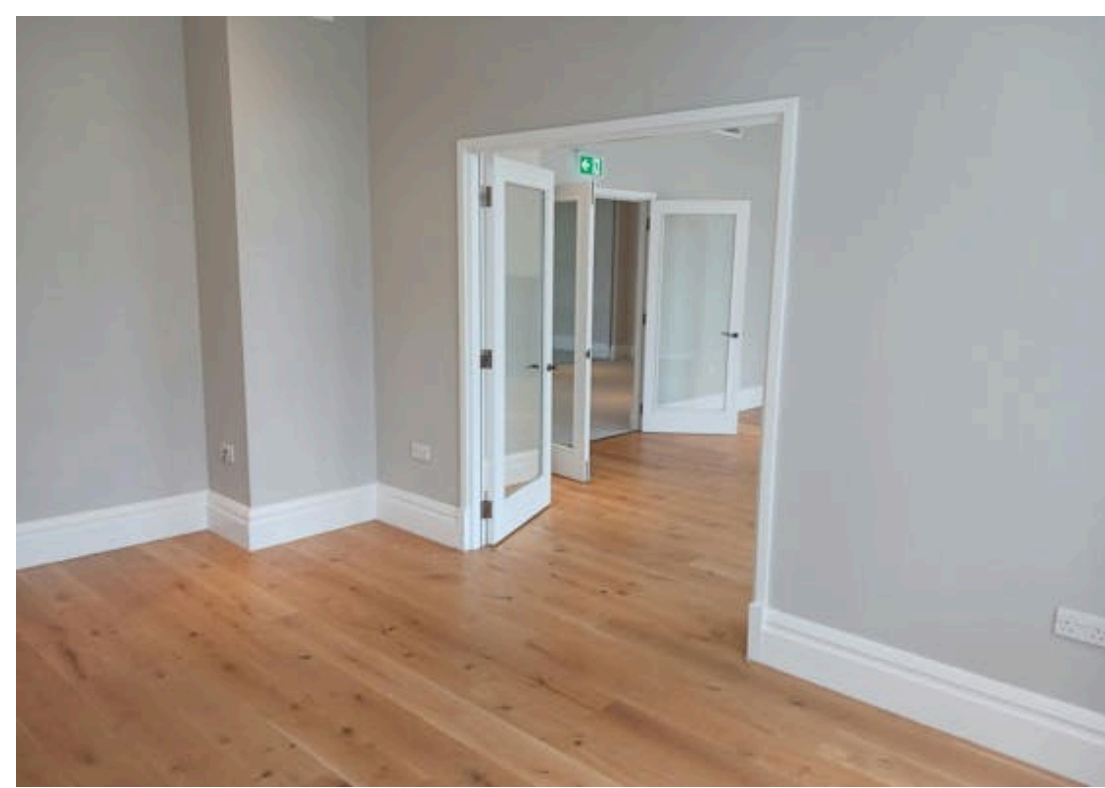


Bond Street
(0.3 Miles)



Goodge Street
(0.5 Miles)

John Princes Street links Oxford Street with Margaret Street, just north west of Oxford Circus. Transport access is excellent with Bond Street station close by and bus routes to all parts of London on the doorstep. The restaurants and shops of both Mayfair and Soho are close at hand.



CROSSLAND OTTER HUNT

3-4 John Princes Street,
London,
W1G 0JL

Economical office close to Oxford
Circus.
Lease with rolling breaks from
December 2026

1,138 sq ft (105.72 sq m)

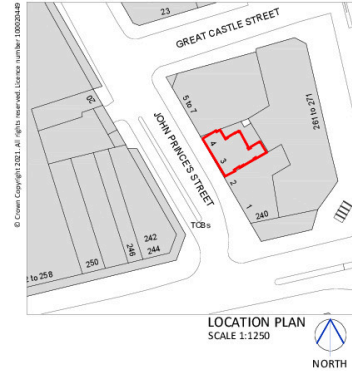
[View Online →](#)

020 7408 1114
www.coh.eu

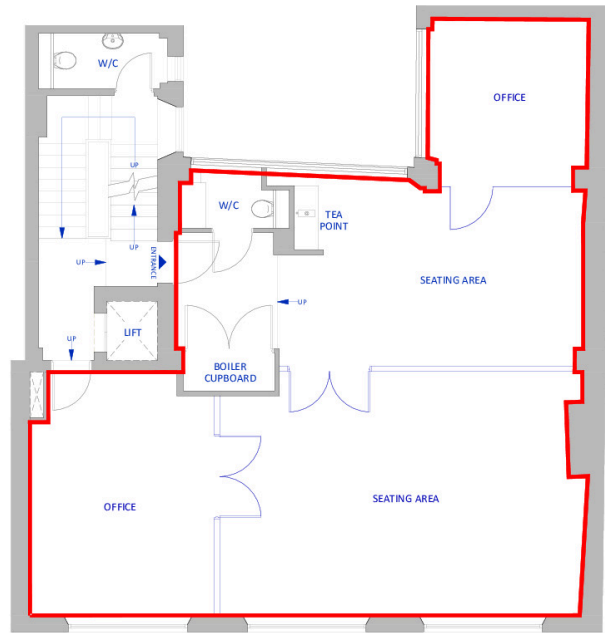


- Wood floors to main office
- Air conditioning
- High ceilings and great light
- Fitted kitchen and private WC
- Lift

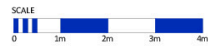
PLEASE NOTE - THIS DRAWING HAS BEEN PRODUCED FOR LAND REGISTRATION PURPOSES ONLY.



PLEASE NOTE - ALL PLANS TO BE PRINTED AS AN UNREGISTERED DOCUMENT NOT ENLARGED OR SHRUNK TO FIT PAGE



PLAN LONDON LTD © COPYRIGHT PROTECTED 2021



JOHN PRINCE'S STREET

SECOND FLOOR

| | | | | | |
|--------|--|--|-----------------------|----------------|-------------|
| client | address SECOND FLOOR 3-4 JOHN PRINCES STREET LONDON W1G 9L | location SECOND FLOOR LEASE PLAN | date 15.10.2021 | scale 1:100 | sheet A4 |
| | | | dwg no. PL1388G-01 | revision VH | drawn EJ |



Accommodation

The accommodation comprises 1,138 sq ft on the whole second floor

| NAME | SQ FT | RENT (SQ FT) | RATES PAYABLE (SQ FT) | SERVICE CHARGE (SQ FT) | TOTAL MONTH | TOTAL YEAR | AVAILABILITY |
|------|-------|--------------|-----------------------|------------------------|-------------|------------|--------------|
| 2nd | 1,138 | £35.15 | £28.29 | £18.35 | £7,756.67 | £93,080.02 | Available |

CROSSLAND OTTER HUNT

CONTACT US



Mike MacKeith
07831361722
mike@coh.eu



Phil Frenay
02073992742 | 07818566174
phil@coh.eu



Emma Byrne
07715516788
emmab@coh.eu

020 7408 1114

www.coh.eu

Description

A self-contained office of 1,138 sq ft over the whole second floor, arranged as an open area, two large offices to the front and a meeting room to the rear.

Location

John Princes Street links Oxford Street with Margaret Street, just north west of Oxford Circus. Transport access is excellent with Bond Street station close by and bus routes to all parts of London on the doorstep. The restaurants and shops of both Mayfair and Soho are close at hand.

EPC

C

VAT

Applicable

ANTI MONEY LAUNDERING

The successful applicant will be required to provide two forms of ID and proof/source of funds, to satisfy anti-money laundering protocols.

CROSSLAND OTTER HUNT

www.coh.eu



Visit Our Office
3-5 Barrett Street
London
W1U 1AY