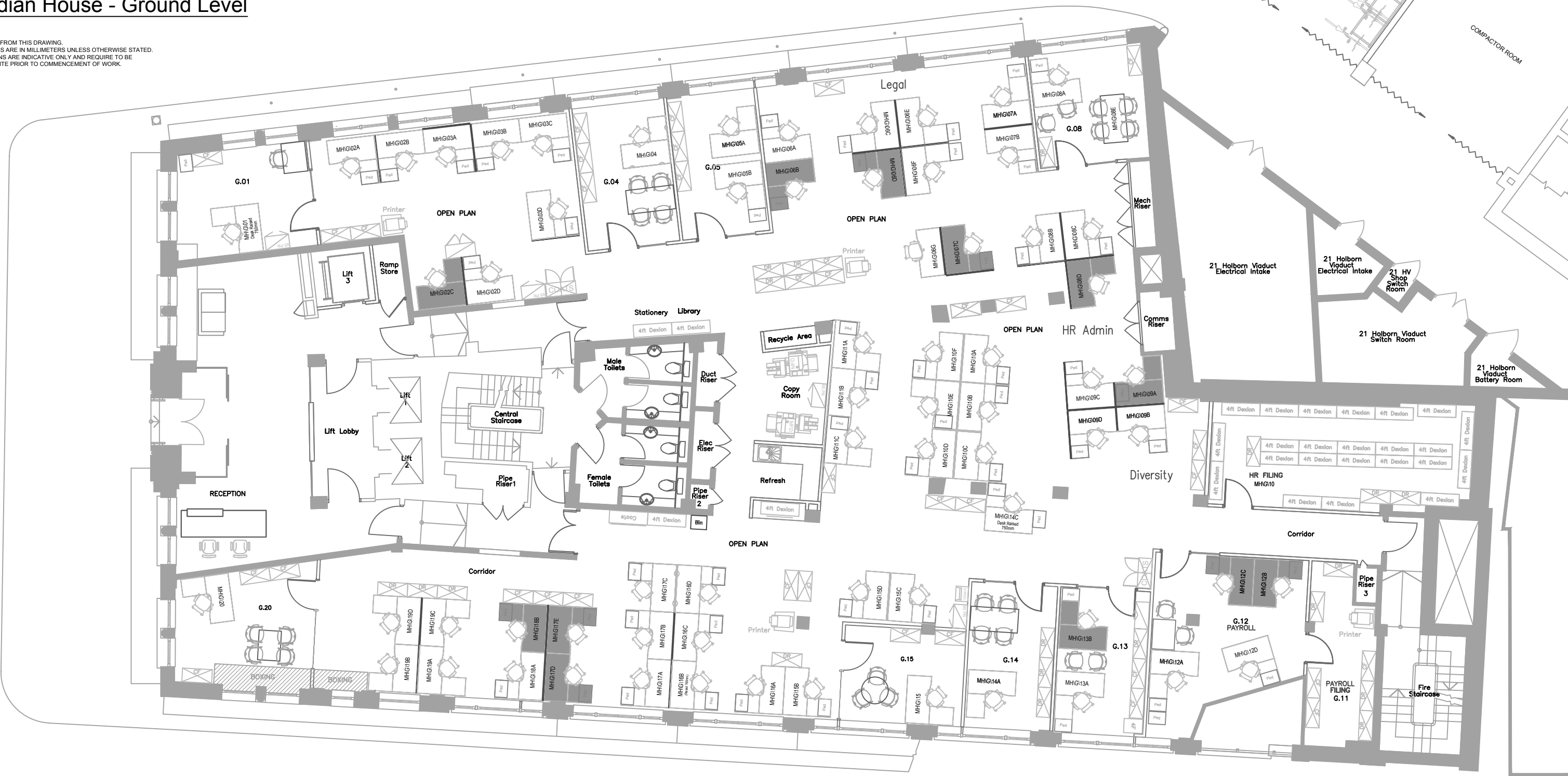


Meridian House - Ground Level

NOTES:
 DO NOT SCALE FROM THIS DRAWING.
 ALL DIMENSIONS ARE IN MILLIMETERS UNLESS OTHERWISE STATED.
 *ALL DIMENSIONS ARE INDICATIVE ONLY AND REQUIRE TO BE CHECKED ON SITE PRIOR TO COMMENCEMENT OF WORK.

Farringdon Street



Newcastle Close

- Spare Partner Desk
- Spare Trainee Desk
- Spare Desk Non-Sharing Partner
- Other (Secondment/Unpaid Leave/Maternity Leave)
- Spare Secretary Desk
- Temp (Visitors)
- Spare Fee Earner Desk
- Partner Not Sharing

- 2 24/11/17 GML Names up-dated.
- 1 18/04/17 GML Furniture & Names on desks up-dated.

ISSUE	DATE	INITIAL	DESCRIPTION
-------	------	---------	-------------

Hogan Lovells International LLP
 Atlantic House
 Holborn Viaduct
 London EC1A 2FG
 Tel: +44 (0)20 7296 2000
 Fax: +44 (0)20 7296 2001

BUILDING : MERIDIAN HOUSE
 PROJECT : GROUND FLOOR
 DRG TITLE : EXISTING LAYOUT

DRG. No. : MH E0G	ISSUE : 2
SCALE : N.T.S	DRAWN BY : Rupert Joens
DATE : January 18	