

London KT6 - 149 Ewell Road, Surbiton KT6 6AW
Retail Shop to Rent



BLUE ALPINE

PROPERTY CONSULTANTS



London KT6 - 149 Ewell Road, Surbiton KT6 6AW

Retail Shop to Rent



Property Features:

- Comprises ground floor retail shop
- VAT is applicable to this property
- Available on a new lease with flexible terms to be agreed by negotiation
- Situated on a main arterial route with occupiers nearby including Sainsbury Local, Café, Hair Salon, Restaurant and many more.

Property Description:

Comprises well-presented commercial property situated along a prominent stretch of Ewell Road, offering excellent frontage and visibility. The premises provide flexible internal space suitable for a variety of retail, office, or service-based uses. Finished to a good standard, the property benefits from natural light and a practical layout for day-to-day operations.

Ground Floor: 72 sq m (775 sq ft)

Open plan retail, storage, ancillary, wc



London KT6 - 149 Ewell Road, Surbiton KT6 6AW

Retail Shop to Rent



Terms:

Available on a new lease with terms to be agreed by negotiation

Rent: £480.77 per week (PCM: £2,083.33)

Deposit: £6,250 (3 Months)

Rateable Value:

Rateable Value - £17,250 p.a.

Rates Payable - £6,500 p.a.

EPC:

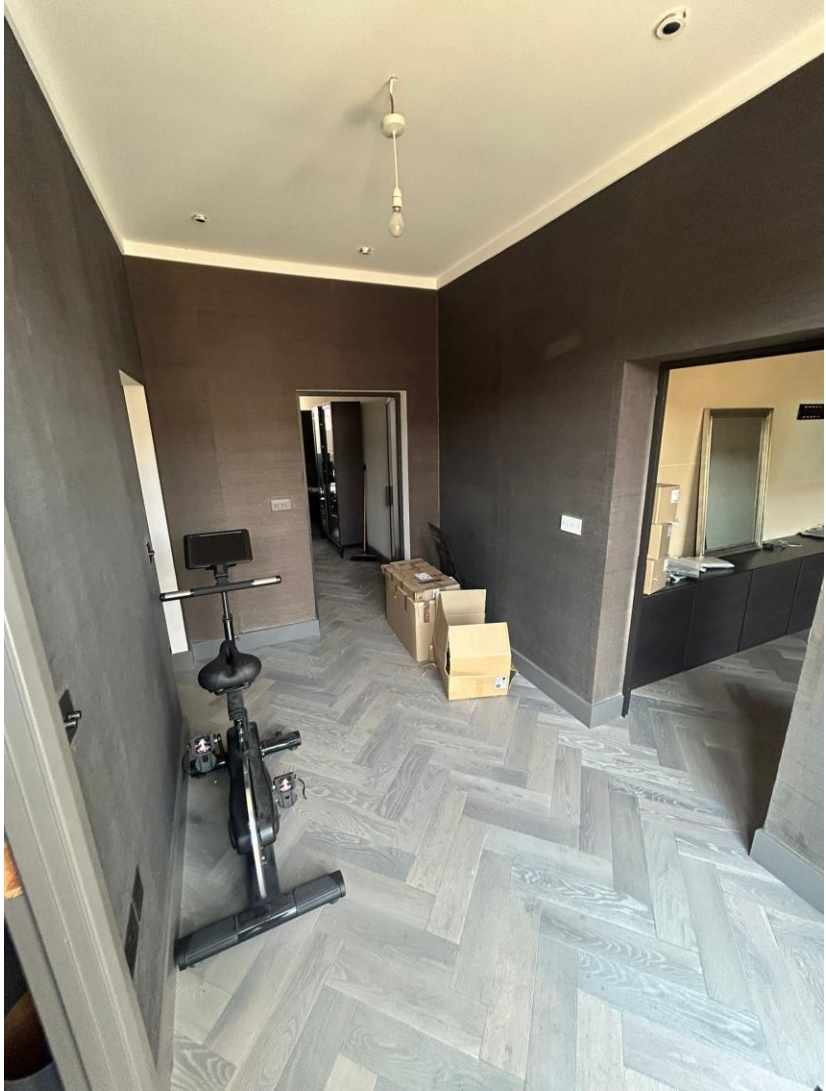
The property benefits from a C Rating. Certificate and further details available on request.

Location:

The property is located on Ewell Road in Surbiton, a busy and well-established commercial corridor within the Royal Borough of Kingston upon Thames. The area benefits from a strong mix of independent retailers, national operators, and local amenities, attracting consistent footfall throughout the day. Surbiton town centre is within close proximity, offering a wider range of shops, cafés, and services. Excellent transport links are available, with Surbiton railway station providing direct services to London Waterloo in approximately 20 minutes. The location is also well served by local bus routes, enhancing accessibility for both customers and staff. Overall, the area presents a vibrant and convenient setting for a variety of business types.



London KT6 - 149 Ewell Road, Surbiton KT6 6AW
Retail Shop to Rent



London KT6 - 149 Ewell Road, Surbiton KT6 6AW

Retail Shop to Rent

Contacts:

For further information or to schedule a viewing, please contact a member of our team below.



Daniel Bean
Senior Property Consultant
M: +44(0)7881 013606
E: daniel@bluealpine.com



Eric Yi
Property Consultant
M: +44(0)7342 484509
E: eric@bluealpine.com



Sam Georgev
VP Sales & Lettings
M: +44(0)7554 557088
E: sam@bluealpine.com



Callum Dormer
Sales & Lettings
M: +44(0)7766 753302
E: callum@bluealpine.com

Address:

Blue Alpine Partners Limited
Trading Address: 54 Welbeck Street, Marylebone, London W1G 9XZ
Registered Address: Suite 115, Devonshire House, Manor Way, Borehamwood, Hertfordshire, WD6 1QQ

Disclaimer: Blue Alpine Partners prepares sales and letting particulars diligently and all reasonable steps are taken to ensure that they are correct. Neither a seller nor a landlord nor Blue Alpine Partners will, however, be under any liability to any purchaser or tenant or prospective purchaser or tenant in respect of them. If a property is unoccupied, Blue Alpine Partners may not have all the information required by a prospective purchaser or tenant in its possession, may not be able to obtain it and may not be able to verify all the information which it does hold. Prospective purchasers should make their own investigations before finalising any agreement to purchase or lease.



BLUE ALPINE

PROPERTY CONSULTANTS