



ime DJK Group Ltd
12 Home Street
Edinburgh
EH3 9LY

Lease Disposal

£18,000 Per Annum

Premium £50,000

3-4 London Road, Edinburgh EH7 5AP

Class 3 - Hot Food Take Away

T: 0131 629 5050 | E: commercial@imedjk.co.uk | www.imedjk.co.uk | Follow us @imeproperty

Location

The subjects occupy a prime position on London Road, just moments from the junction with Maryfield and Easter Road—one of Edinburgh's most vibrant and well-connected commercial corridors. Situated within a busy parade of prominent street-front units, the location benefits from a strong blend of established local traders and national destinations, including A1 Kilt Hire, The hugely popular Maria's Kitchen, Folkvangr Tattoo, Herringbone, and the Meadowbank Retail Park. This is an area exceptionally well served by frequent and reliable tram and bus links, offering effortless access across the city. Major connecting routes such as Leith Walk, Easter Road and the Royal Mile lie close by, ensuring the property sits at the heart of a thriving, easily accessible district with excellent footfall and visibility.

Description

The property forms part of an attractive Victorian terraced row and benefits from direct main-door access into a beautifully presented ground-floor frontage. A wooden staircase leads down to the basement level, providing practical additional space. Currently fitted out as an Indian-style takeaway, the unit enjoys strong street presence, excellent signage opportunities, and a layout that naturally supports both takeaway and casual sit-in trade.

The front-of-house area has been very tastefully decorated, creating a warm and inviting atmosphere for customers. This generous space accommodates a well-designed waiting/serving zone along with several tables and chairs for those wishing to dine on site offering a valuable dual setup rarely available in this location.

To the rear, the fully fitted kitchen—accessed via a double swing door—is arranged to suit the current operator but offers the flexibility to support a wide range of cuisines with minimal adaptation.

The basement level provides a highly usable ancillary area, complete with practical shelving for storage and housing a recently installed combi boiler, making it ideal for stock management and operational efficiency.

Accommodation

According to our recent measurement survey, the subjects comprise of the following approximate net internal area:

Ground and Basement floors:
Total 73 Sq m 786 Sq ft)

Rent

The rent is £16,800 per annum, on full repairing and insuring terms. There are approximately 13 years remaining.

EPC

The Energy Performance Certificate rating is D

Utilities

The property is served by mains gas, electricity and water.

Rent / Sale price

The rent is £18,000 per annum, on full repairing and insuring (FRI) lease terms. There are approximately 13 years remaining.

Premium

Our client is looking for a premium of £50,000 for the leasehold, fixtures and fittings.

Rateable Value

According to the Scottish Assessor's website (www.saa.gov.uk), the subjects have a rateable value is £15,400. The uniform business rate for the current year is £0.498 pence in the pound.

Occupiers may be eligible for rates relief through the small business bonus scheme if the combined rateable value of all their business premises in Scotland is £35,000 or less.

Entry

Upon completion of a formal missive under Scots Law.

Legal Costs

Each party is responsible for their own legal and costs incurred in the preparation, negotiation and settlement of the documentation pertaining to the lease or sale including LBTT or VAT applicable.

Viewing and Further Information

By appointment through the sole letting agent, ime DJK Group Ltd.



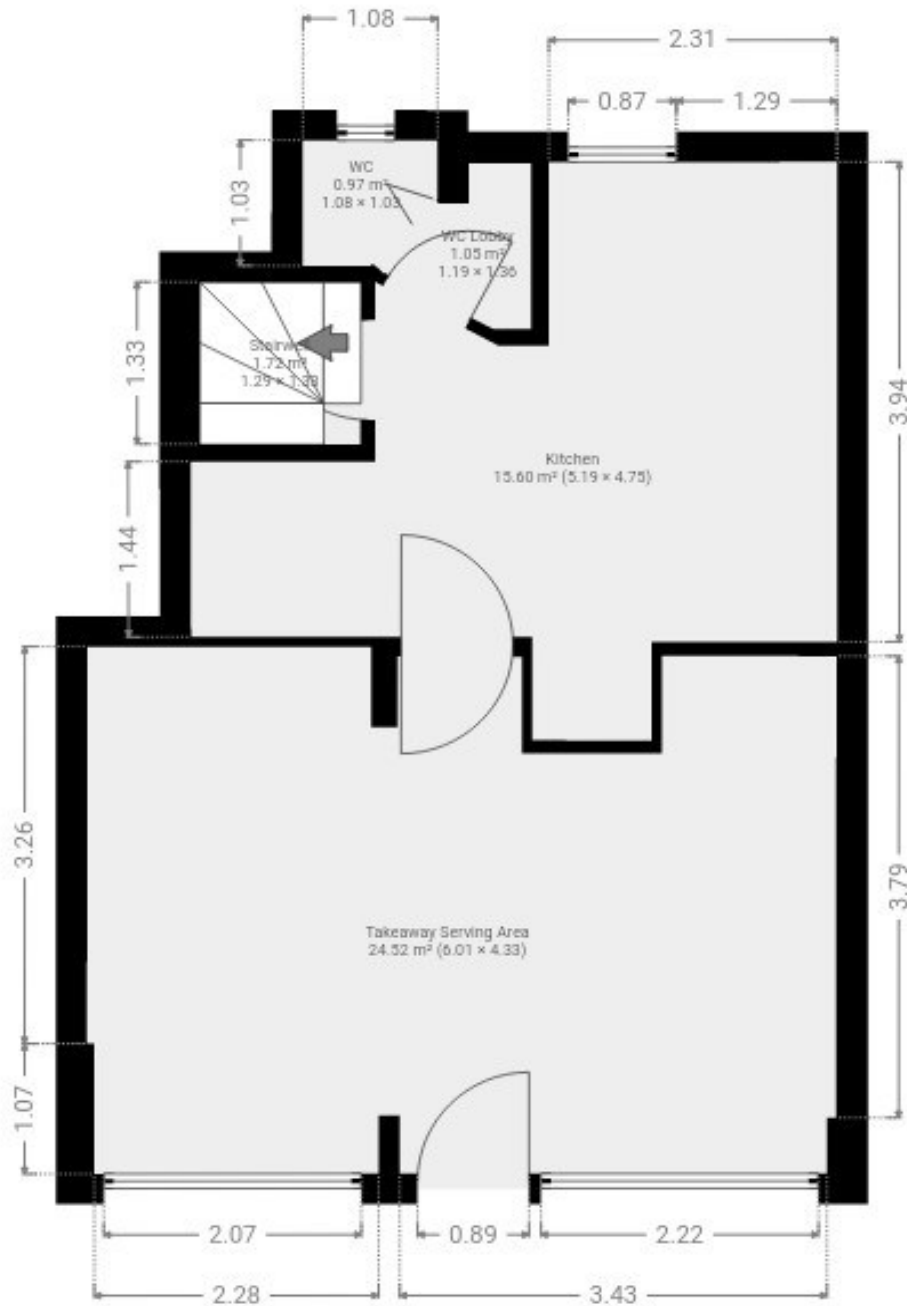
IMPORTANT NOTICE - PLEASE READ CAREFULLY

Misrepresentation Act 1967 - ime DJK Group Ltd for themselves and for the vendors or lessors of this property whose agents they are give notice that:

These particulars are set out as a general outline only for the guidance of intended purchasers or lessors and do not constitute part of an offer or contract.

All descriptions, dimensions, reference to condition and necessary permissions for use and occupation, and other details are given without responsibility and any intending purchasers or tenants should not rely on them as statements or representations of fact but must satisfy themselves by inspection or otherwise as to the correctness of each term of them.

The vendors or lessors do not make or give, and neither do ime DJK Group Ltd for themselves nor any person in their employment has any authority to make or give any representation or warranty whatever in relation to this property.



THIS FLOORPLAN IS PROVIDED WITHOUT WARRANTY OF ANY KIND. SENSOPIA DISCLAIMS ANY WARRANTY INCLUDING, WITHOUT LIMITATION, SATISFACTORY QUALITY OR ACCURACY OF DIMENSIONS.

Misrepresentation Act 1967 - ime DJK Group Ltd for themselves and for the vendors or lessors of this property whose agents they are give notice that:

These particulars are set out as a general outline only for the guidance of intended purchasers or lessors and do not constitute part of an offer or contract.

All descriptions, dimensions, reference to condition and necessary permissions for use and occupation, and other details are given without responsibility and any intending purchasers or tenants should not rely on them as statements or representations of fact but must satisfy themselves by inspection or otherwise as to the correctness of each term of them.

The vendors or lessors do not make or give, and neither do ime DJK Group Ltd for themselves nor any person in their employment has any authority to make or give any representation or warranty whatever in relation to this property.