

FIRST FLOOR MODERN COURTYARD OFFICE SUITE TO LET

3C, Mitre Court, 38 Lichfield Road, Sutton Coldfield, West Midlands, B74 2LZ

1,311 SqFt (121.79 SqM) | £21,000 per annum exclusive





KEY FEATURES

- Located in modern office courtyard development
- Predominantly open plan office accommodation
- Close proximity to all amenities including railway station and bus terminus
- 4 allocated car parking within the courtyard
- New LED lighting, carpeting and gas central heating

LOCATION

The premises are well located within the modern Mitre Court office development, being situated on the northern edge of Sutton Coldfield town centre and accessed off the A5127 Lichfield Road. The main retail provisions of Sutton Coldfield town centre are within walking distance, as are the bus interchange and railway station which has regular services on the Cross City line to Lichfield and Birmingham Grand Central.

DESCRIPTION

The premises are located on the first floor comprising predominantly open plan space, with three partitioned meeting rooms/private offices, together with separate male and female WCs and a kitchen. The premises is due to be refurbished with an expected specification including new carpet tiles, suspended ceiling with LED lighting, perimeter trunking, double glazing and gas central heating throughout. There are 4 allocated car parking spaces available with the premises.



Area	SqFt	SqM
First Floor	1,178	109.44
Total Floor Area	1,311	121.79

3C, Mitre Court, 38 Lichfield Road, Sutton Coldfield, West Midlands B74 2LZ



TERMS

The premises are available by way of a new internal repairing and insuring lease with service charge for a term of years to be agreed.

ASKING RENT

£21,000 per annum exclusive

SERVICE CHARGE

Service charge is payable towards maintaining the common areas and the courtyard together with the exterior of the building. Further details are available upon request.

EPC

A full copy of the energy performance certificate is available upon request.

BUSINESS RATES

Business Rateable Value - £15,000

Small business rates relief may be available on this property in 2025/2026 and interested parties are advised to make their own enquiries with the Local Authority (Birmingham).

MONEY LAUNDERING

In accordance with Anti Money Laundering Regulations, two forms of ID and confirmation of the source of funding will be required from the successful applicant.

LEGAL COSTS

Each party will be responsible for their own legal costs incurred in the transaction.

VAT

All figures quoted are exclusive of VAT which we believe is payable.

VIEWING

Strictly by prior appointment, please contact:



Eleanor Robinson-Perkins

DDI: 0121 321 3441

Mob: 07738 713829

E: eleanor.robinson@burleybrowne.co.uk

3C, Mitre Court, 38 Lichfield Road, Sutton Coldfield, West Midlands B74 2LZ

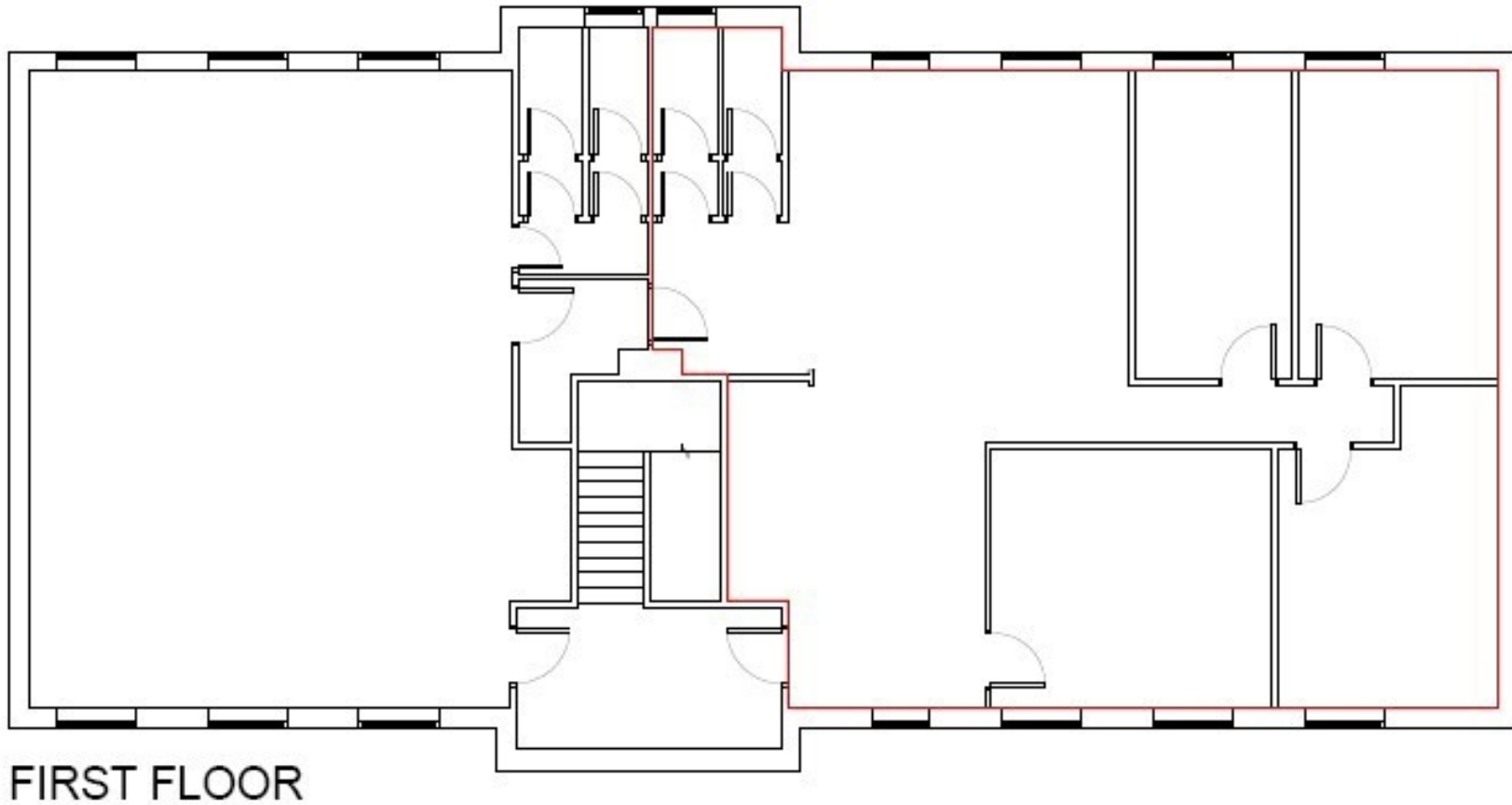


0121 321 3441
www.burleybrowne.co.uk



Burley Browne gives notice that, (i) these particulars are intended as a general outline only for the guidance of prospective purchasers or lessees and do not constitute any part of any offer or contract, (ii) the accuracy of any description and or dimensions necessary for use and occupation cannot be guaranteed and any prospective purchasers or tenants should not rely on them as statements or representations of fact but must satisfy themselves by inspection or otherwise; (iii) no employee of the agents has any authority to make or give any representation or enter into any contract whatsoever in relation to the property; (iv) the agents will not be liable in negligence or otherwise for any loss arising from use of these particulars.

Misrepresentation Act 1967. Unfair Contract Terms 1977. Consumer Protection Regulations under Unfair Trading Regulations 2008. The Business Protection Regulations from Misleading Marketing Regulations 2008.



0121 321 3441
www.burleybrowne.co.uk



Burley Browne gives notice that, (i) these particulars are intended as a general outline only for the guidance of prospective purchasers or lessees and do not constitute any part of any offer or contract, (ii) the accuracy of any description and or dimensions necessary for use and occupation cannot be guaranteed and any prospective purchasers or tenants should not rely on them as statements or representations of fact but must satisfy themselves by inspection or otherwise; (iii) no employee of the agents has any authority to make or give any representation or enter into any contract whatsoever in relation to the property; (iv) the agents will not be liable in negligence or otherwise for any loss arising from use of these particulars.

Misrepresentation Act 1967. Unfair Contract Terms 1977. Consumer Protection Regulations under Unfair Trading Regulations 2008. The Business Protection Regulations from Misleading Marketing Regulations 2008.