

Monday, 24th January 2025

portman&wigmore

Unit 8, Orchard Court, Portman Square, London

Delivered by  area

Managed by  GPE.

An Introduction to portman&wigmore

9,117 sq/ft of beautiful workspace





Contents

Space Plans / Look & Feel / Visuals

Space Plan

Lower Ground Floor

1390 sq/ft

Original Plan

Option 1



Accommodation Schedule

16	Desks
01	Collaboration / Dinner Table
01	Teapoint
01	8pp Meeting Room
02	Phone Booths

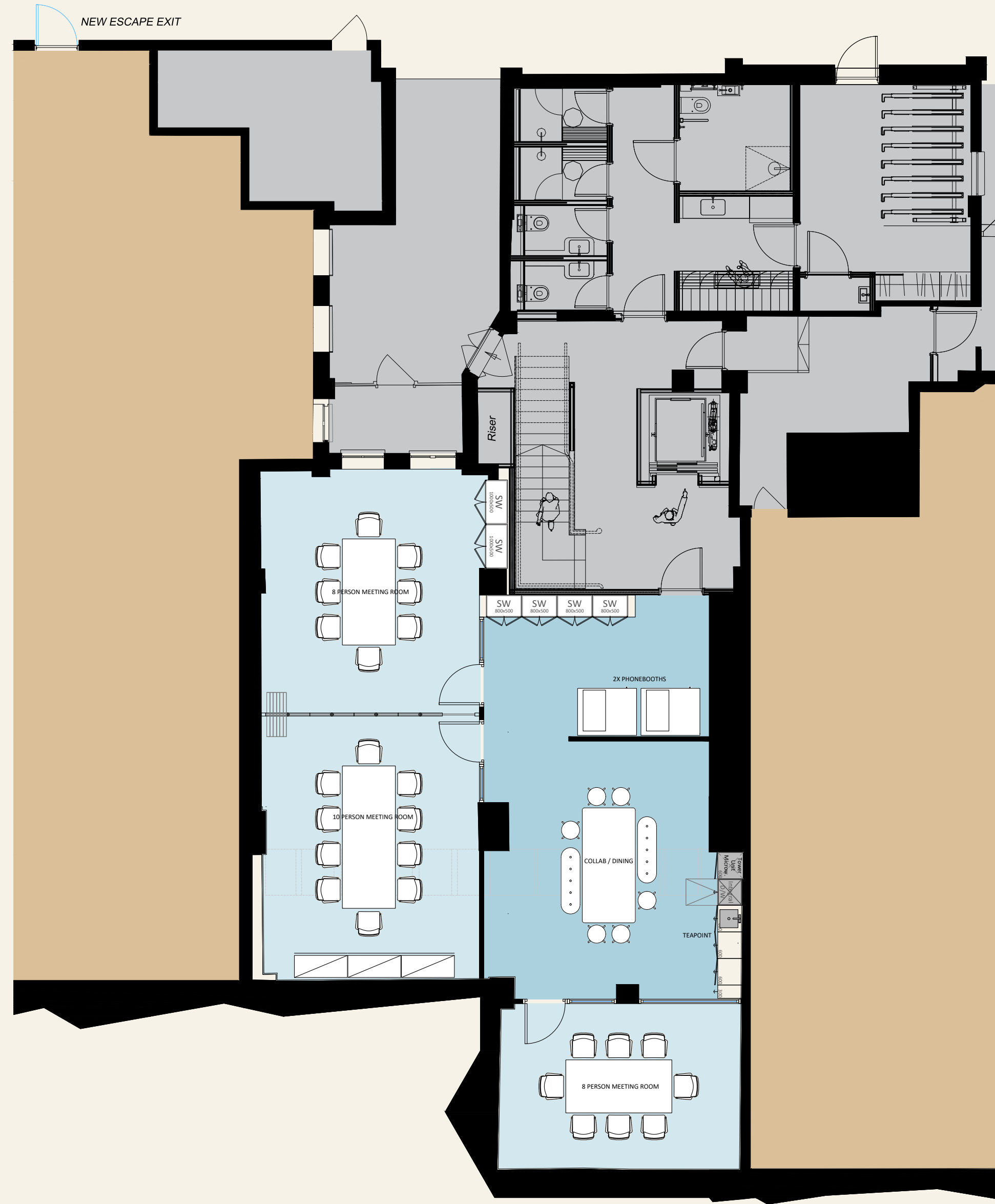
Space Plan

Lower Ground Floor

1390 sq/ft

Original Plan

Option 2

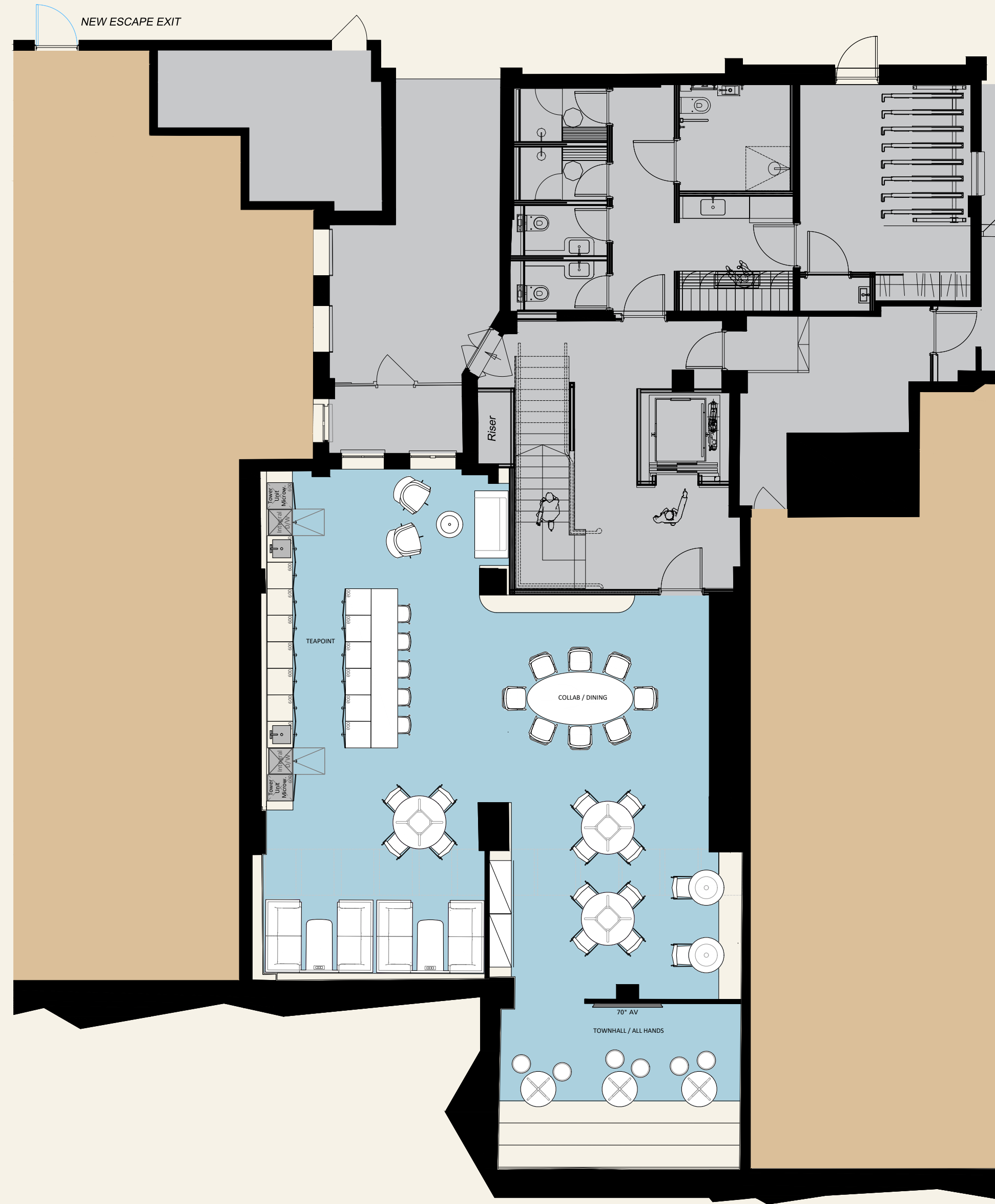


Space Plan

Lower Ground Floor

1390 sq/ft

New Plan



Space Plan

Ground Floor

1420 sq/ft

Original Plan



Accommodation Schedule

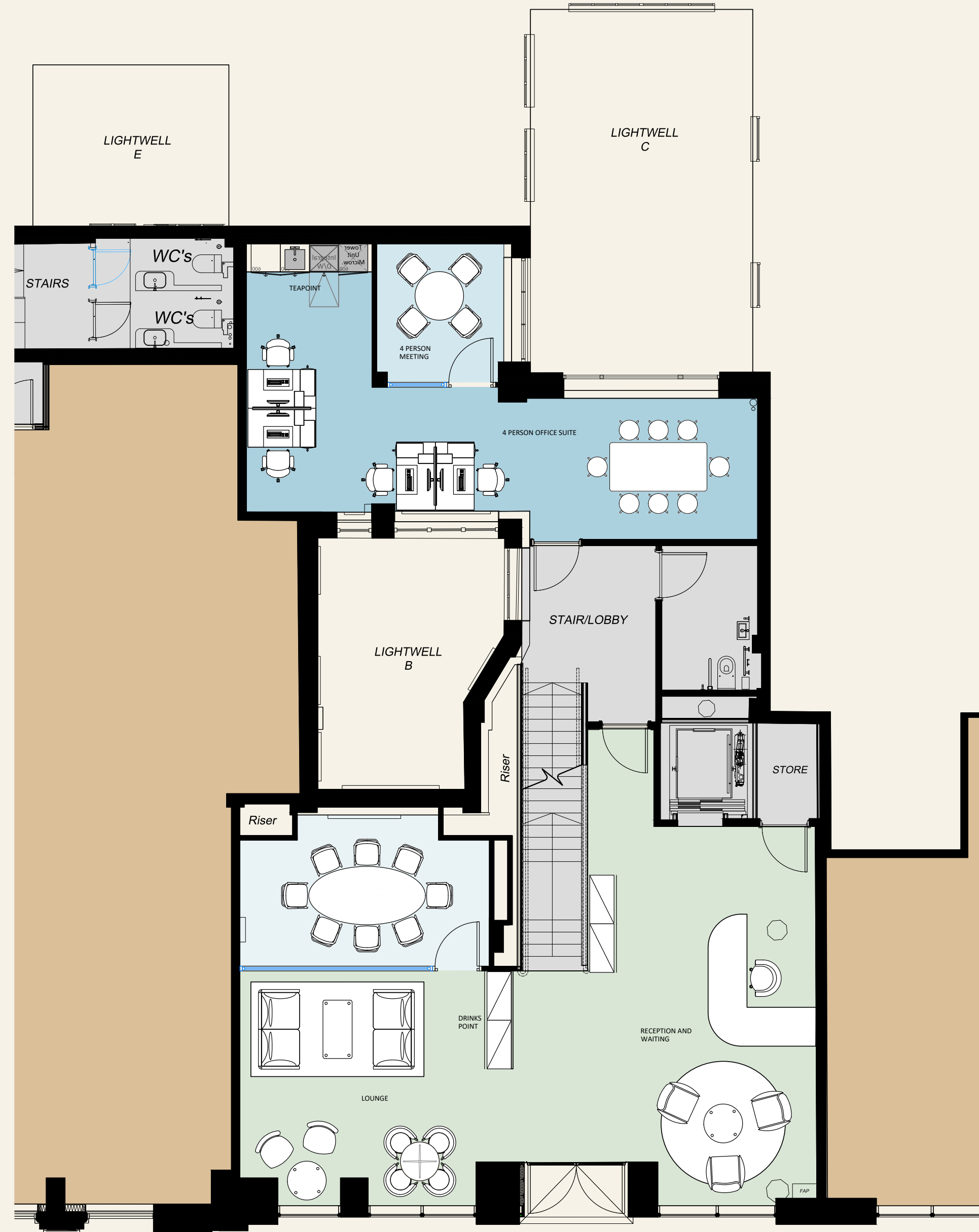
- | | |
|----|---------------------------|
| 01 | Reception / Waiting Area |
| 01 | 8pp Flexible Meeting Room |
| 01 | 6pp Flexible Meeting Room |
| 01 | 4pp Meeting Room |
| 01 | 4 pp Office Room |

Space Plan

Ground Floor

1420 sq/ft

New Plan



Space Plan

First Floor

6307 sq/ft

Original Plan



Accommodation Schedule

01	Reception Desk
01	Waiting Area
50	Desks
01	12pp Meeting Room
02	8pp Meeting Room

01	6pp Meeting Room
01	4pp Meeting Room
02	1pp Phone Booth
02	2pp Zoom Booth
01	Collaboration Zone

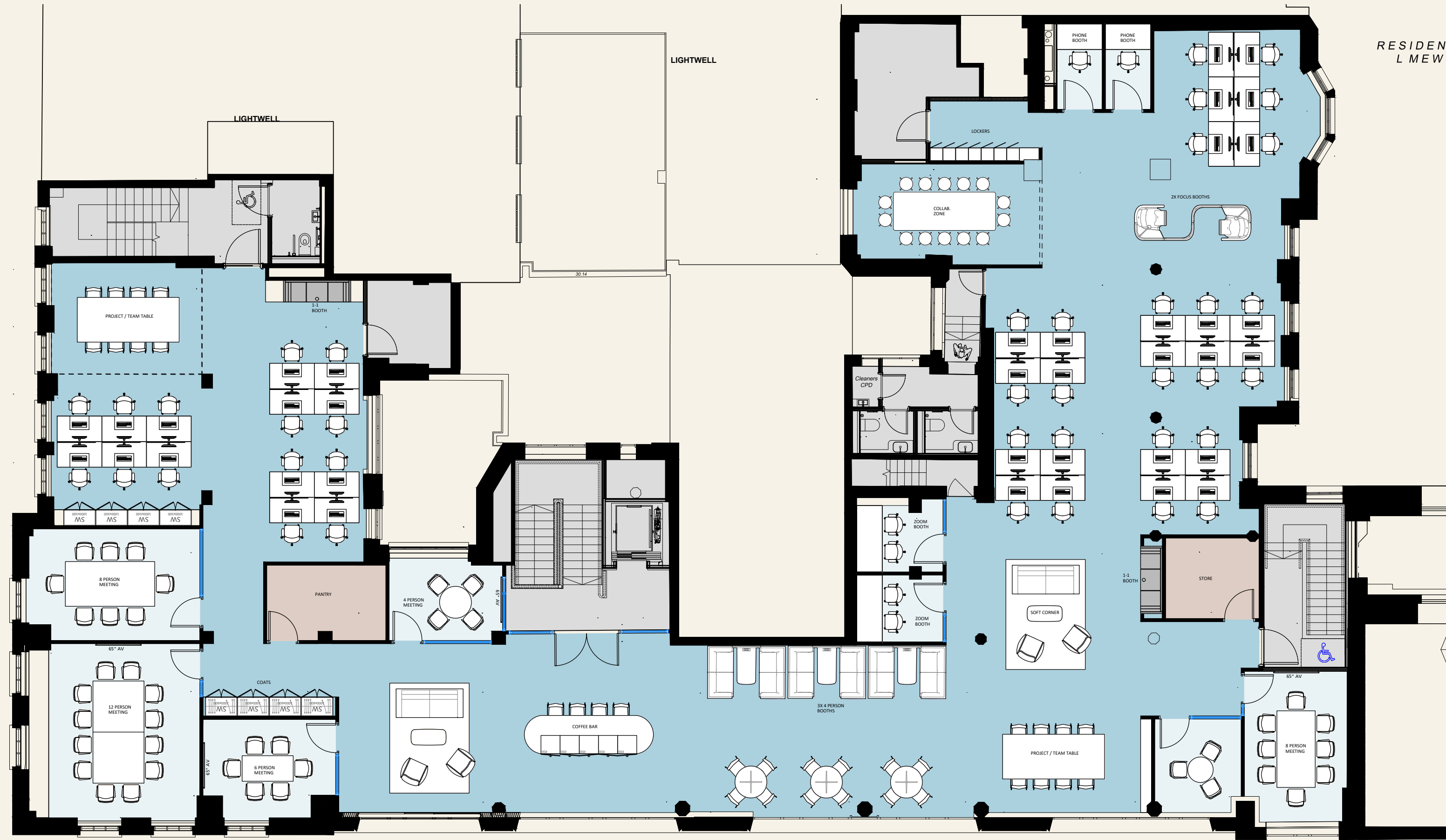
02	4pp Booths
01	Breakout Area
-	Lockers

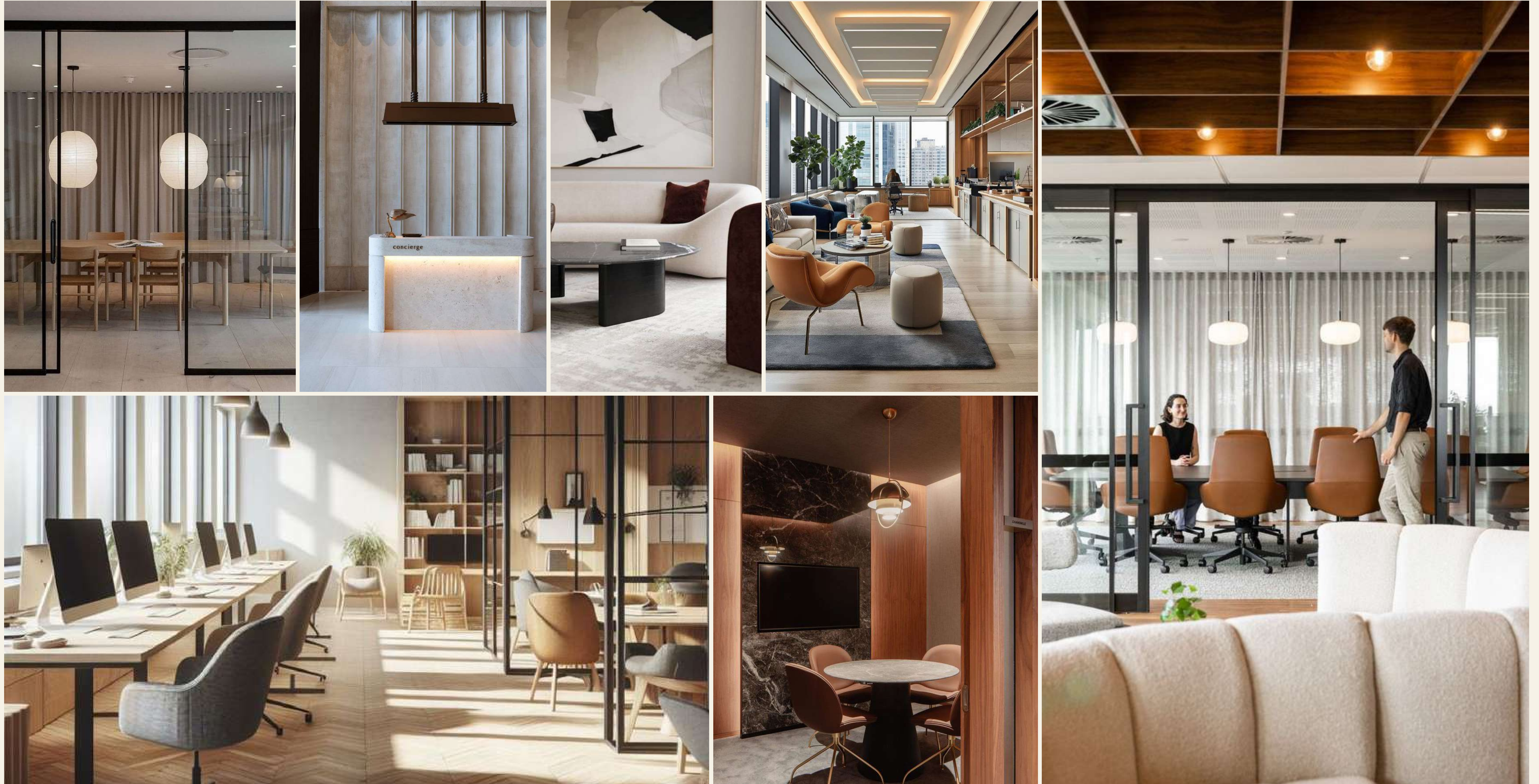
Space Plan

First Floor

6307 sq/ft

New Plan





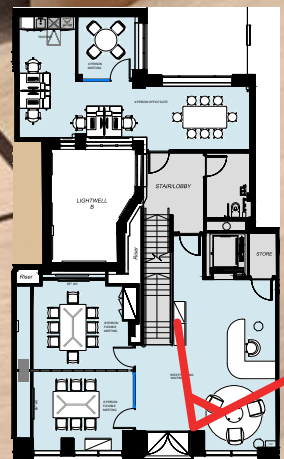


Visual
Reception

Ground Floor

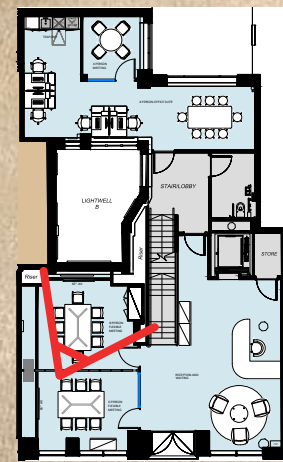


PORTMAN
SQUARE



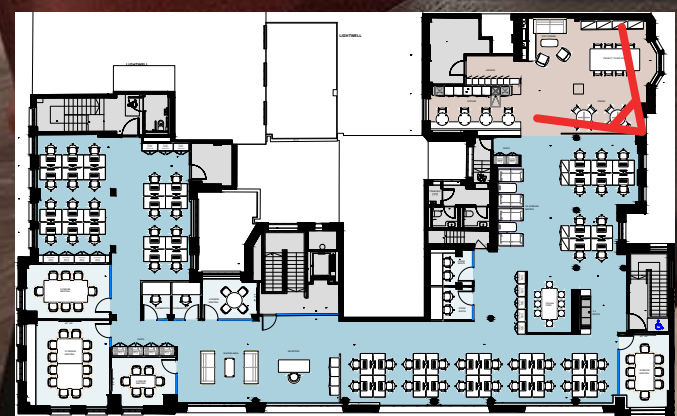
Visual
Meeting Room

Ground Floor



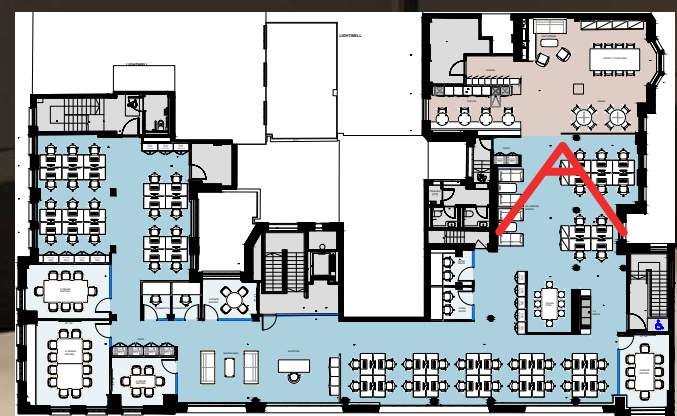
Visual
Tea Point

First Floor



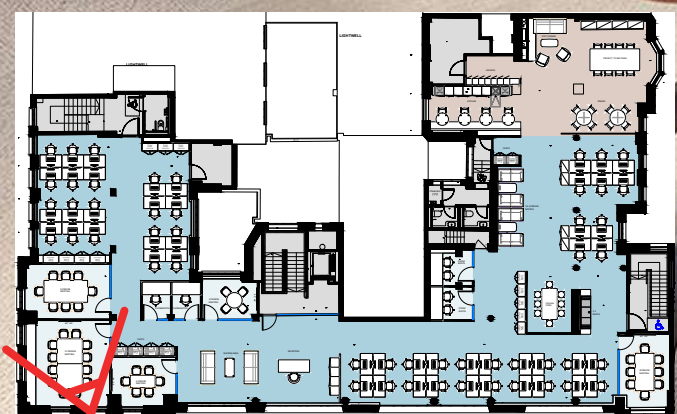
Visual
Open Plan

First Floor



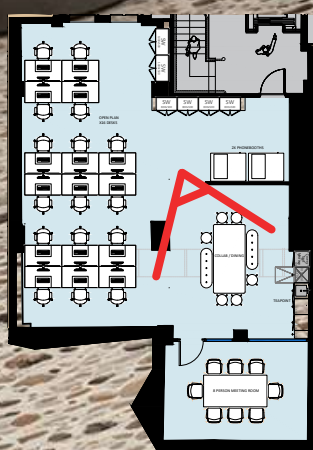
Visual
Meeting Room

First Floor



Visual
Tea Point

Lower Ground



Delivered by  area

Thank You

Make Space for the future