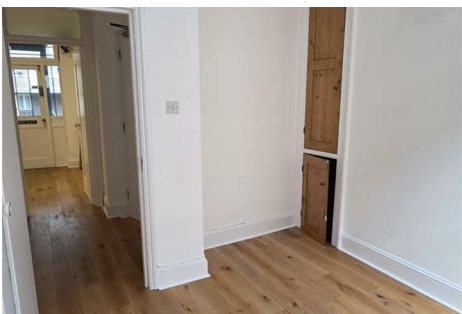


PARKER JAMES

ESTATES

Established since 1995



## 14-16 Brewer Street

London W1F 0SQ

- Available immediately
- Light and airy
- Private cloakroom
- 24 hour access
- Oxford Street and Regent Street walking distance
- Second floor office space
- Capacity for eight desks
- Newly decorated
- Unfurnished
- Piccadilly Circus station minutes away

£2,200 Per Month

# 14-16 Brewer Street

London W1F 0SQ



Available immediately on an unfurnished basis is this self-contained second floor office space with 24 hour access in the heart of vibrant Soho.

The newly redecorated office which has wood flooring throughout is currently semi-open plan and has the capacity for eight work stations all with access to the kitchen and WC.

Brewer Street runs between Glasshouse Street to the west and Wardour Street to the east just a short distance from Piccadilly Circus (Bakerloo and Piccadilly lines) station.

Soho's multitude of bars, restaurants and cafes are moments away whilst pleasant open space can be enjoyed in nearby St Anne's Gardens, a Soho hidden gem.



[Directions](#)





# Floor Plan

These particulars, whilst believed to be accurate are set out as a general outline only for guidance and do not constitute any part of an offer or contract. Intending purchasers should not rely on them as statements of representation of fact, but must satisfy themselves by inspection or otherwise as to their accuracy. No person in this firm's employment has the authority to make or give any representation or warranty in respect of the property.



48 Warwick Street Soho, London, W1B 5NL  
Tel: 020 7287 4244 Email: [management@parkerjamesestates.co.uk](mailto:management@parkerjamesestates.co.uk) [parkerjamesestates.co.uk](http://parkerjamesestates.co.uk)

