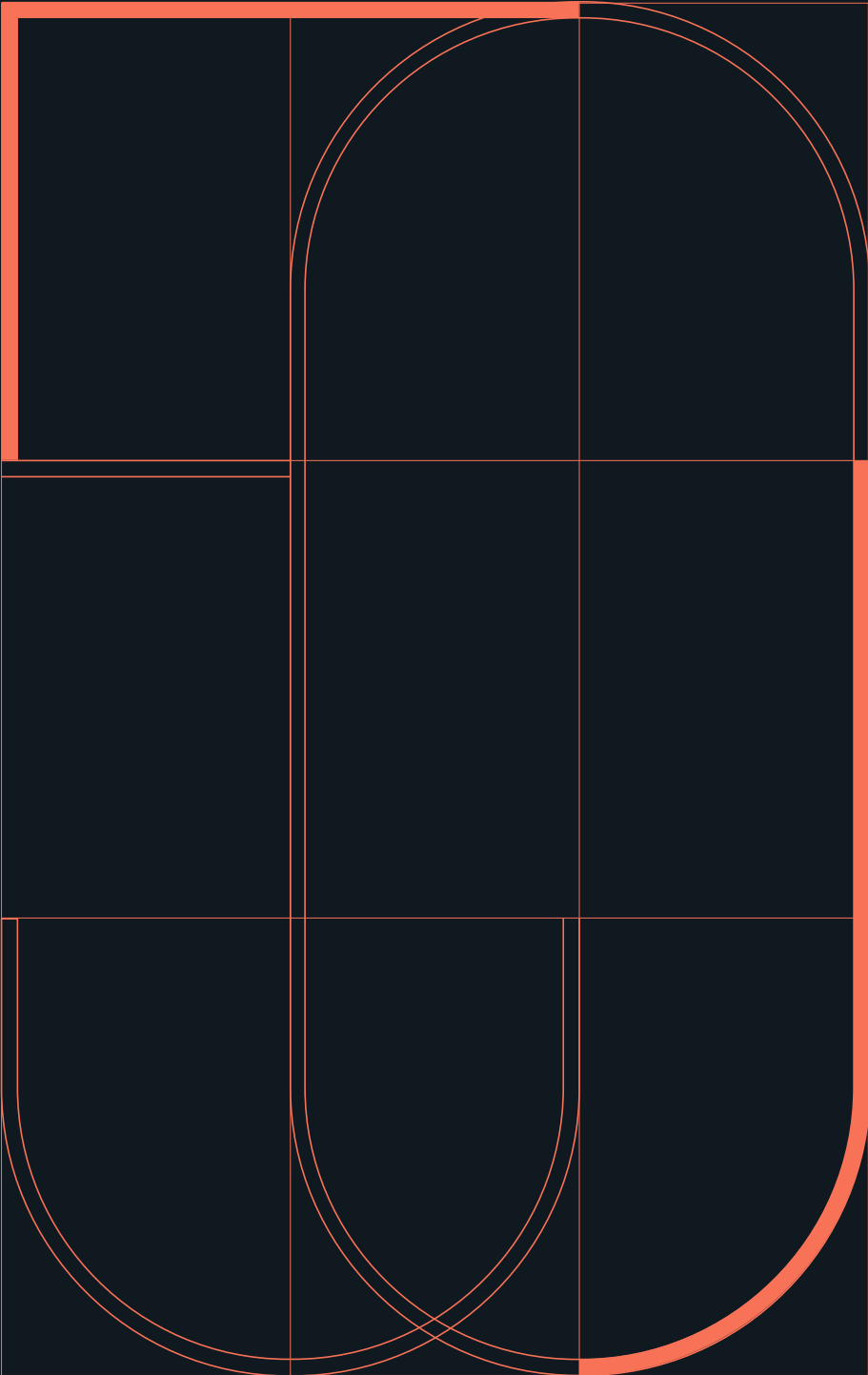


50 St Mary Axe

London EC3



Prime office space surrounded by landmarks

50 St Mary Axe occupies a prominent City position, surrounded by iconic towers with internationally renowned occupiers and a varied range of exciting amenities.

The building features a contemporary reception and flexible workspaces suitable for a range of occupiers.



Accommodation

Floor	Condition	Sq Ft	Sq M
5th	Fully fitted	4,054	377
3rd	Shell & core	4,313	401
Total		8,367	778



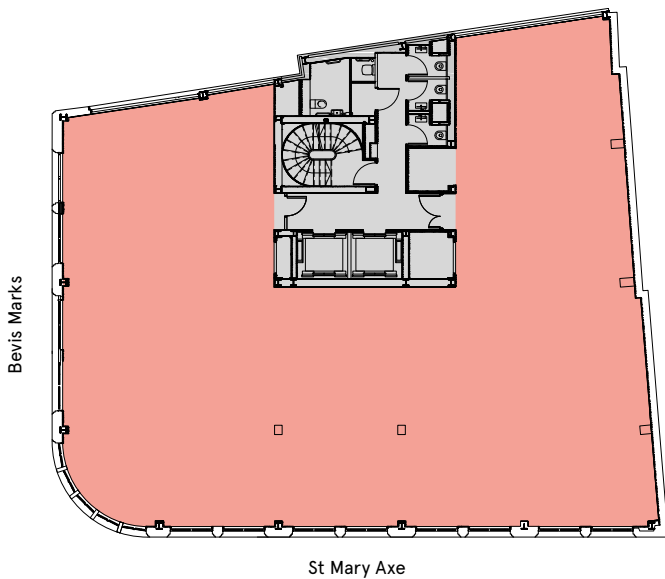
Amenities

Chilled beam air conditioning (5th floor)	Raised floors – 75mm void	Floor to ceiling height – 2.65m
24 hour security	Showers on alternate floors	Bicycle storage



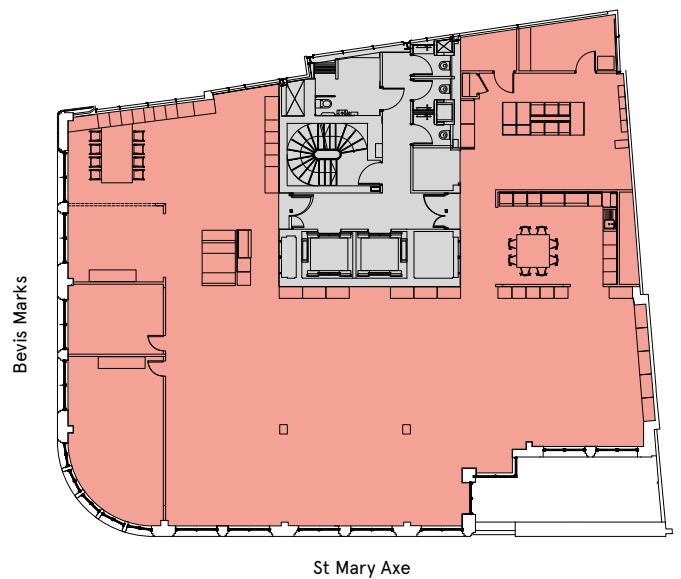
3rd Floor

4,313 sq ft (401 sq m)



5th Floor

4,054 sq ft (377 sq m)



⌚ Plan for indicative purposes only.
Not to scale.

Exceptionally positioned in the heart of the City

The surrounding area features a host of vibrant amenities, including Broadgate Circle and Leadenhall Market.

Transport links are excellent, with numerous well connected stations all within a short walk offering access across London and beyond.



Connections

3 mins	4 mins	4 mins
Liverpool Street 	Aldgate 	Fenchurch Street
7 mins	8 mins	10 mins
Bank 	Moorgate 	Tower Hill



Walk times from building. Source: TfL



Terms

Upon application.

Viewings

Strictly through sole letting agents.



**BNP PARIBAS
REAL ESTATE**

Tim Williams
07717 576 894
tim.williams@realestate.bnpparibas

Alastair Robinson
07717 504 438
alastair.robinson@realestate.bnpparibas

BNP Paribas Real Estate for themselves and for the vendors or lessors of this property whose agents they are, give notice that:- a. the particulars are set out as a general outline only for guidance and do not constitute, nor constitute part of, an offer or contract; b. all descriptions, dimensions, references to condition and necessary permissions for use and occupation, and other details are believed to be correct, but any intending purchasers, tenants or third parties should not rely on them as statements or representations of fact but satisfy themselves that they are correct by inspection or otherwise; c. All properties are measured in accordance with the RICS property measurement, 1st Edition May 2015 (incorporating IPMS) unless designated NIA/GIA/GEA, in which case properties are measured in accordance with the RICS Code of Measuring Practice (6th Edition); d. Any images may be computer generated. Any photographs show only certain parts of the property as they appeared at the time they were taken. September 2022.