



SOAPWORKS

BE PART OF IT.



**A PLACE
TO MAKE
YOUR OWN.**

» JOIN AN EXCITING COMMUNITY WITHIN AN AWARD WINNING OFFICE BUILDING, BRIDGING MANCHESTER CITY CENTRE AND MEDIA CITY.

Soapworks is one of the North West's most iconic commercial regeneration projects.

The scheme transformed the former Colgate Palmolive Factory into a modern and dynamic centre for business, creativity and leisure, providing over 400,000 sq ft of stylish Grade A offices with a BREEAM rating of 'Excellent' and EPC rating of B within Salford Quays' new Media City boundary.



» AN AWARD WINNING SCHEME





COMMUNITY AT THE HEART.

» BE A PART OF SOAPWORKS AND GAIN ACCESS TO A RANGE OF COMMUNITY ACTIVITIES.

From fitness classes to street-food, Soapworks activates the communal spaces and generates a sense of community like no other. Join us and take full advantage of our on-site marketing and events team's efforts. Seemlessly blending your working days with our well being activities which includes yoga and HIIT classes, as well as our placemaking pop-up events & food vendors that change with the seasons.



» Raising money for local causes



» On-site cafe



» Community activities



» Pop-up florist



» Local running routes

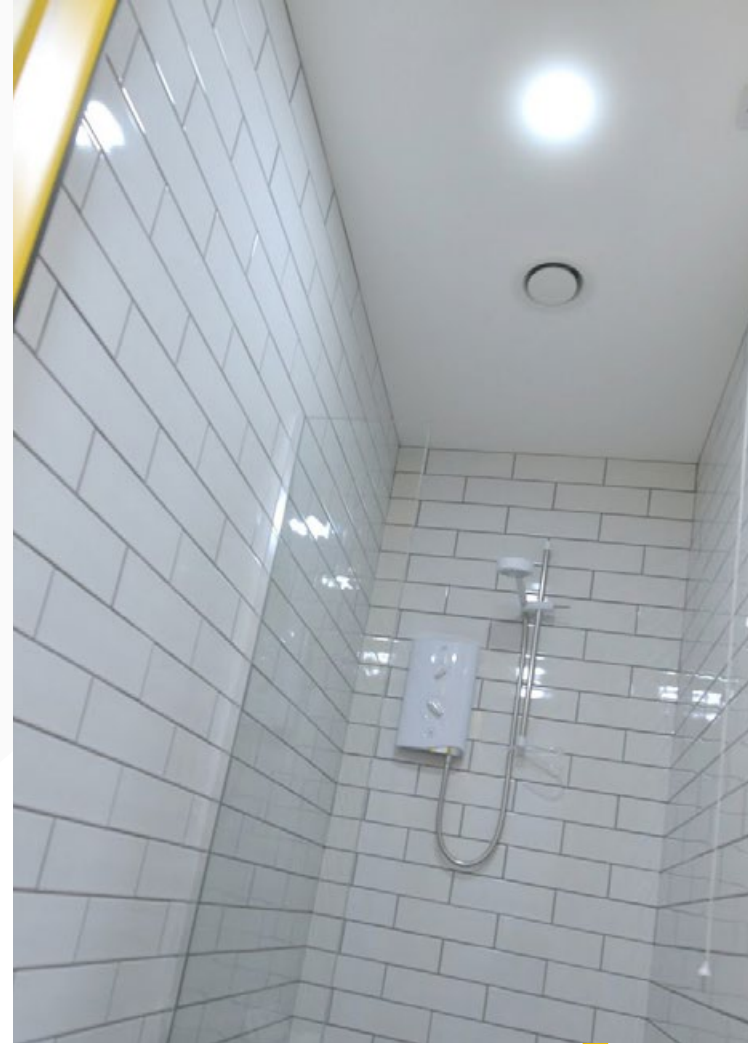


» 12 month calendar of events

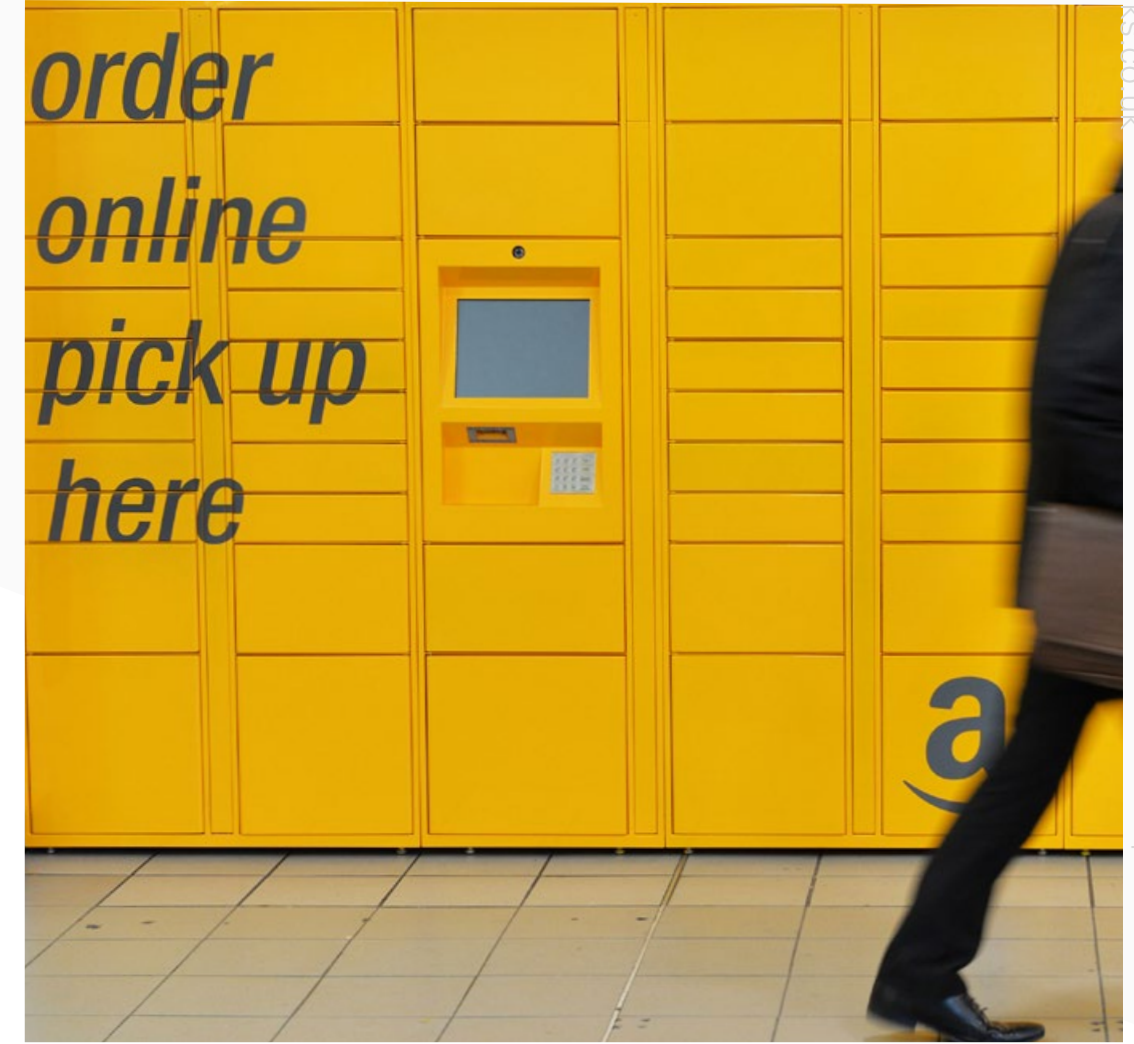
» 24 hour manned reception



» Shower rooms & lockers



» Amazon lockers



» ON-SITE AMENITIES

- 24 hour manned reception
- Secure cycle storage
- Showers and lockers
- On-site cafe
- On site management team
- Super connected site
- 24/7 access
- 24 hour security
- Cash machine
- Pocket park
- Car valet service
- Visitor parking
- Amazon lockers
- Ample onsite parking



» Cycle Storage



» Breakout spaces



MANCHESTER CITY CENTRE

A57

CORNBROOK (M)

SOAPWORKS

A56

(M) POMONA

M602

MEDIA CITY BOUNDARY

A5063

(M) ANORAGE QUAY

RBS

TESCO

PURE GYM

HARBOUR CITY (M)

PREMIER INN

(M) SALFORD QUAYS

EXCHANGE QUAY (M)

EXCHANGE QUAY

(M)

MEDIA CITY (M)

itv

BBC

LOWRY OUTLET MALL

HOLIDAY INN EXPRESS

MERCHANTS QUAY

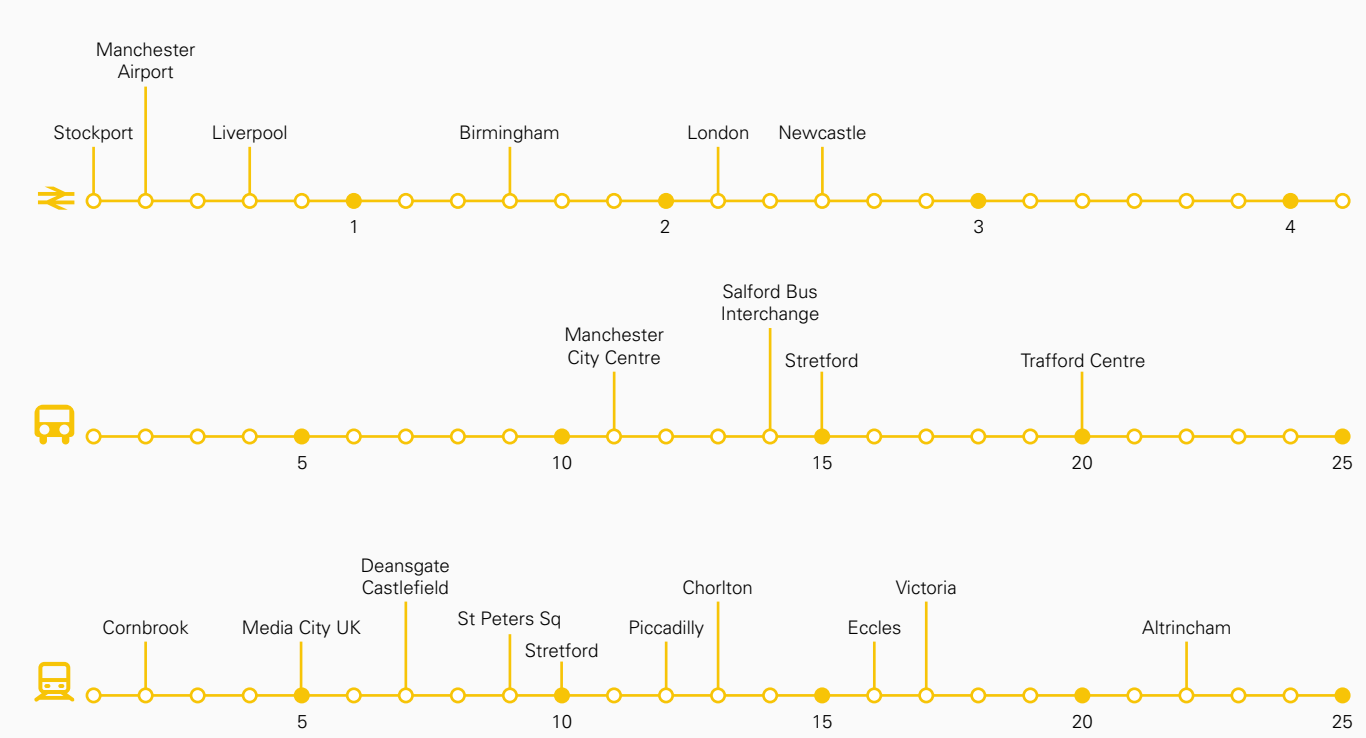
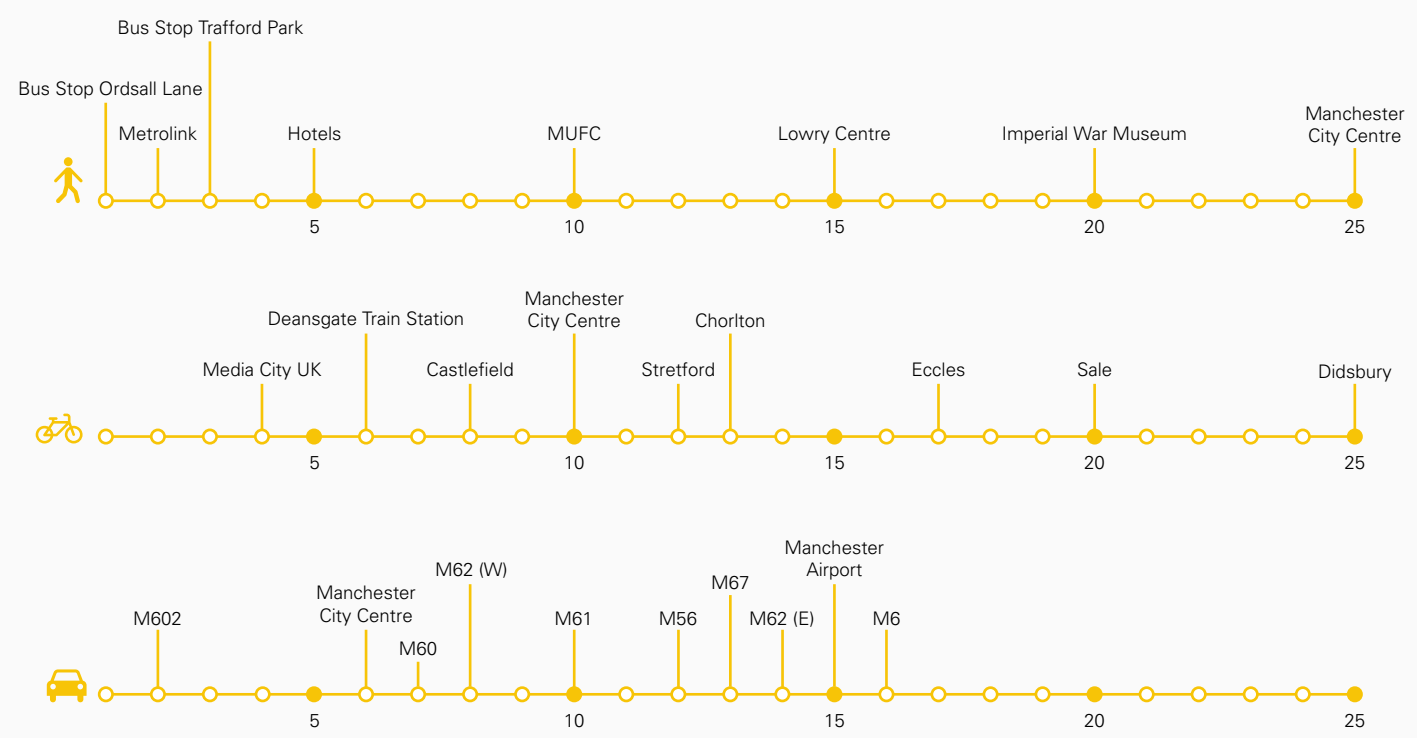
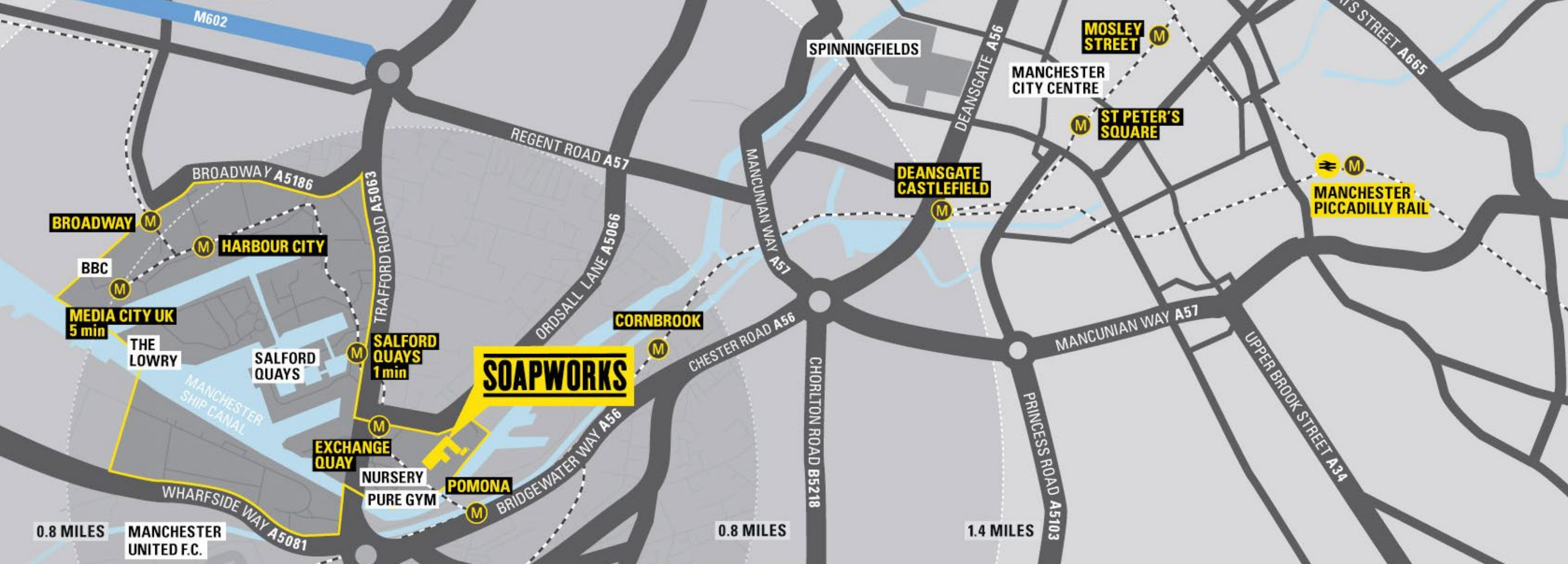
QUAY PLAZA

LOWRY THEATRE

IMPERIAL WAR MUSEUM

A5081

MANCHESTER UNITED FOOTBALL CLUB



» IN THE SURROUNDING AREA

- Convenience stores
- The Lowry Outlet
- Vue Cinema
- Ordsall Hall
- Tesco
- Booths
- Pret a Manger
- Ziferblat
- Frankie and Benny's
- Wagamama
- The Alchemist
- Premier Inn
- Copthorne Hotel
- PureGym
- The Post Office
- Kids Planet Nursery



» Ordsall Hall

» PureGym



» The Alchemist



» Exchange Quay tram stop 4 minutes walk



» Tesco

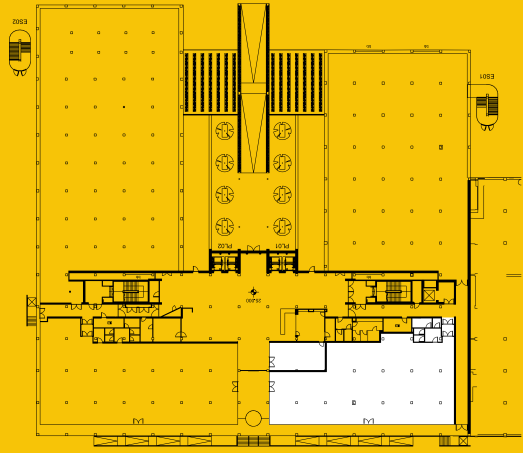
MAKE IT YOURS.

» B1-GF AVAILABLE 5,593 SQ FT

With communal areas, reception and the Soapworks cafe all directly accessible from your front door, this unit is a prime spot within the development and an opportunity not to be missed.

- LG3 lighting
- Raised access floor
- Demised toilets
- Demised VRF system





Example use of space

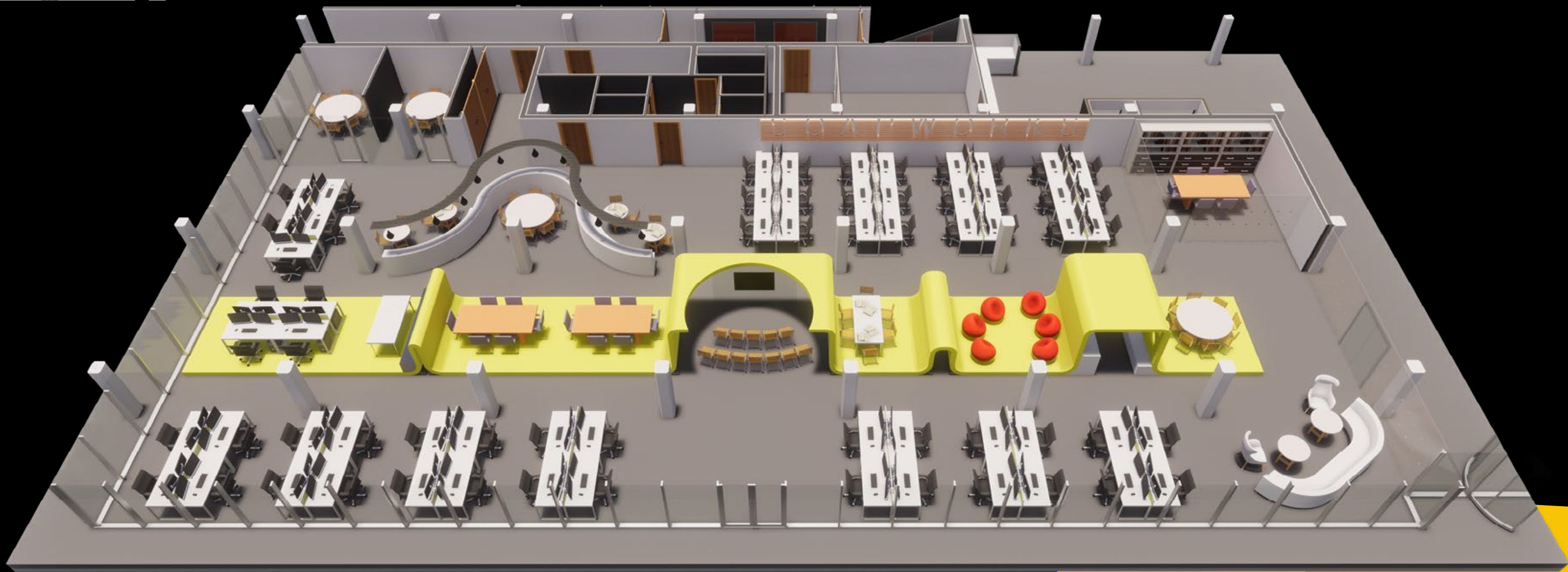
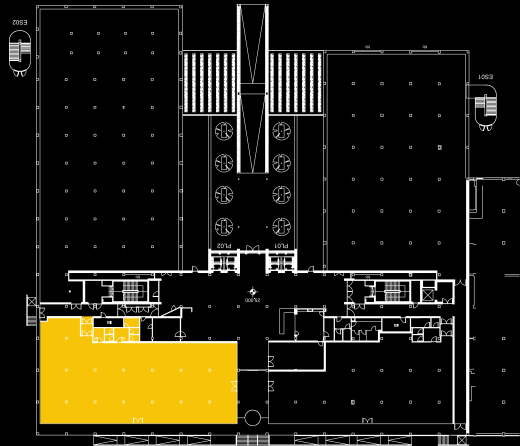
CREATE POSSIBILITIES.

» B2-GF AVAILABLE 6,866 SQ FT

This ground floor unit is the tip of the spear at Soapworks, with the inclusion of outdoor space. The opportunity to place your business at the very gateway to the development. Join us and put your brand in front of every single visitor to the Soapworks.

- LG3 lighting
- Raised access floor
- Demised toilets
- Demised VRF system





Example use of space

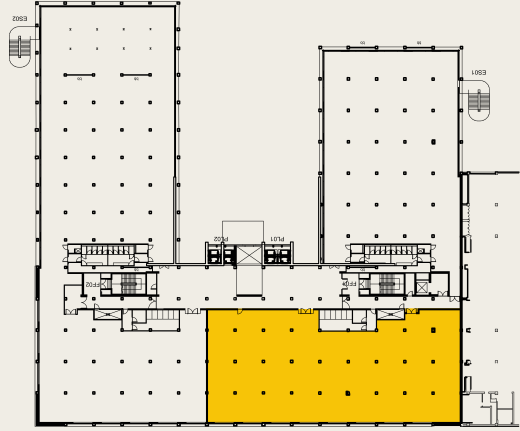
BE PART OF IT.

» B1-101 AVAILABLE 10,867 SQ FT

A prime opportunity to join us here at Soapworks with a unit that boasts un-rivalled natural light from the full height windows and the added bonus of communal breakout space just outside the door, perfect for those informal staff meetings.

- LG3 lighting
- Raised access floor
- Demised VRF system





Example use of space

IN GOOD COMPANY.

"WE WANT OUR STAFF TO BE TRULY PROUD OF WHERE THEY WORK BECAUSE WE BELIEVE A HIGHLY ENGAGED TEAM WILL DELIVER BETTER SERVICE FOR OUR CUSTOMERS. SOAPWORKS IS BEST IN CLASS AND A GREAT INVESTMENT IN MANCHESTER"

Nigel Sullivan \ HR Director TalkTalk

TalkTalk

 **Stantec**

inn8v

 **Home Office**



WANT TO TAKE A LOOK AROUND?

» VISIT SOAPWORKS.CO.UK

SOAPWORKS



Chris Mulcahy
T: 0161 238 6228
E: chris.mulcahy@eu.jll.com

James Devany
T: 0161 238 6233
E: james.devany@eu.jll.com



Mark Baldwin
T: 0161 956 4117
E: mark.baldwin@gva.co.uk

Rhys Evans
T: 0161 956 4017
E: rhys.evans@gva.co.uk

