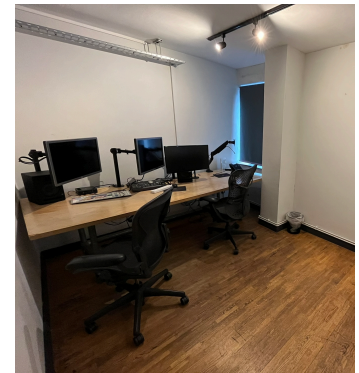


# A RANGE OF SMALL OFFICE SUITES AVAILABLE ON FLEXIBLE TERMS - WITHIN 2 MINUTES OF OLD STREET STATION

JOHN D WOOD



## LOCATION

The building is located immediately off Old Street and within a few minutes walk from Old Street Station, providing great connectivity with easy access to the Northern Line, as well as National Rail services.

This busy mixed-use area is occupied by many thriving businesses and is well served by an array of shops, amenities, eateries and bars.

## Local Stations

Old Street - 2 minutes walk (Northern line and National rail services)

Liverpool Street - 12 minute walk (Elizabeth, Central, Hammersmith and City, Circle, Metropolitan line, Overground, and National rail services)

## DESCRIPTION

A self-contained building, currently operational as a media style premises which has been split into a variety of several small suites. These suites include soundproofed recording studios, editing suites, and small offices.

These offices can be let on a flexible tenancy. Alternatively, a lease can be taken on the entire demise.

Features include:

- reception area
- self-contained
- a range of large and small suites

## TERMS

The property is available by way of a new lease, or on flexible licenses. Price on application.

## VAT

Payable

## LEGAL COSTS

Each party to be responsible for their own costs

## VIEWINGS

For further information, or to arrange an inspection of the property, please contact:

George Cracknell  
07384 897647  
georgecracknell@johndwood.com