

One Minster Court. New tricks.

Beautifully refurbished.
Two stylish floors available.
Up to 20,000 sq ft.

**ONE
MINSTER
COURT** LDN EC3



Bold, striking & iconic.

A city landmark with a unique presence, iconic Minster Court brings together an impressive community of global brands in a highly connected location.



**ONE
MINSTER
COURT** LDN EC3



A landmark famed for its iconic architecture and striking design.





We've got a brand new look.

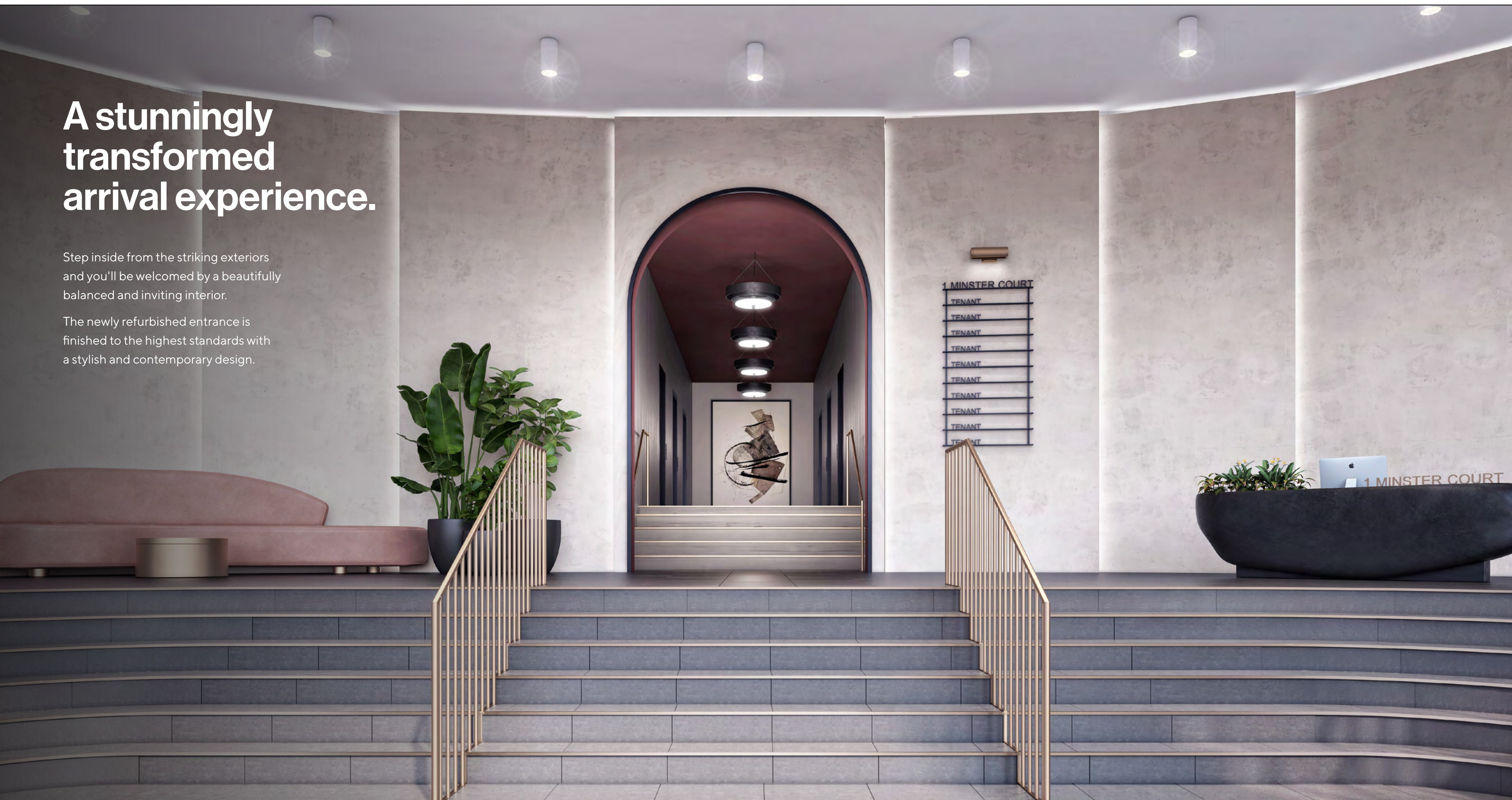
Make a statement with an impressive new reception and benefit from welcoming shared seating areas.

Office floors have been finished to Grade A standards with bespoke lighting and finishes creating a slick and distinctive working environment.

A stunningly transformed arrival experience.

Step inside from the striking exteriors and you'll be welcomed by a beautifully balanced and inviting interior.

The newly refurbished entrance is finished to the highest standards with a stylish and contemporary design.





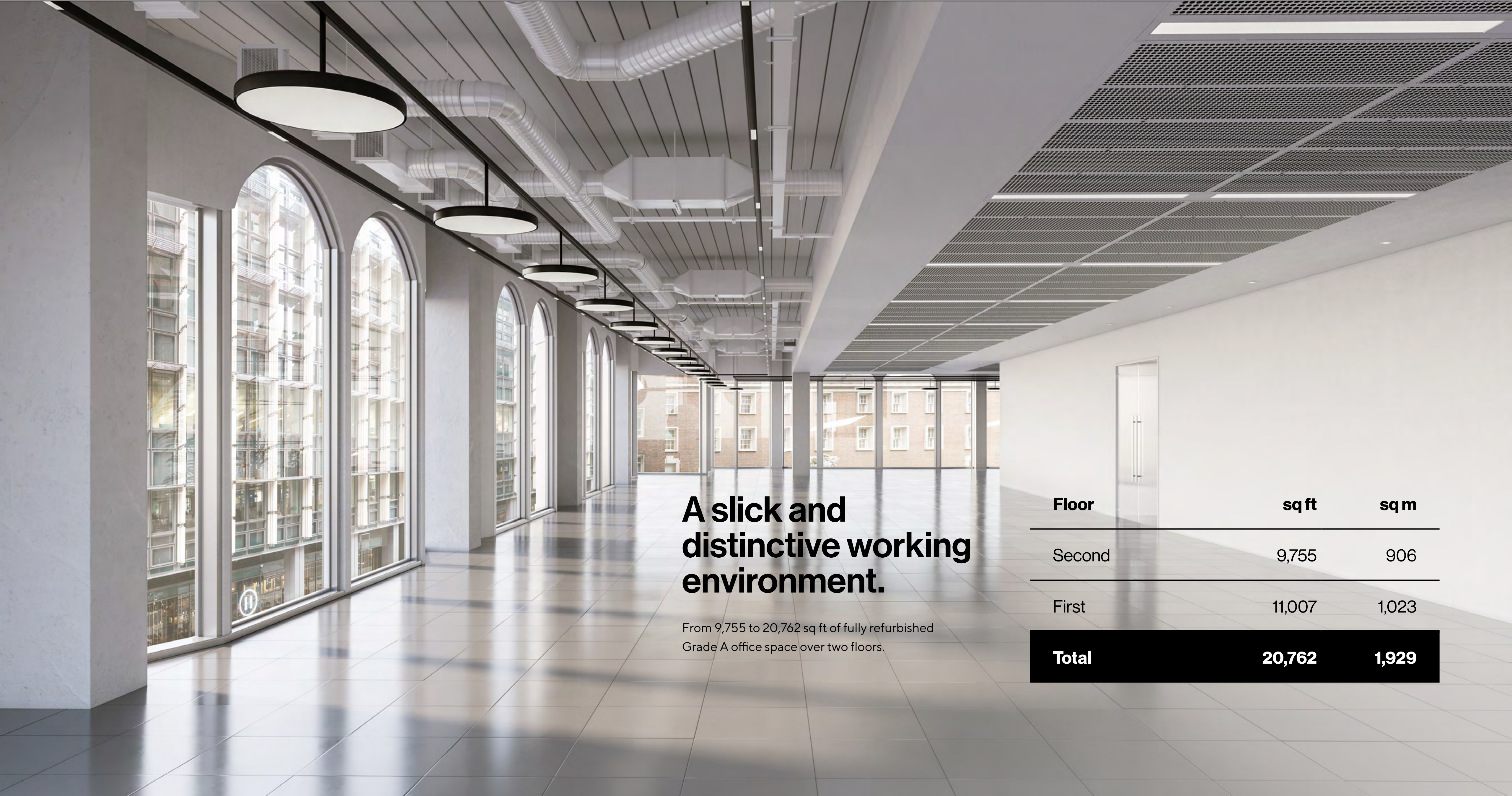
A sophisticated new business lounge.

Benefit from additional space for informal meetings, catching up on emails or with your colleagues in the comfortable new shared lounge, accessed from the reception.



Introducing corporate-chic office space.

The available floors offer
workspace that is bright and
flexible with high quality finishes.



A slick and distinctive working environment.

From 9,755 to 20,762 sq ft of fully refurbished Grade A office space over two floors.

Floor	sq ft	sq m
Second	9,755	906
First	11,007	1,023
Total	20,762	1,929

Floorplan

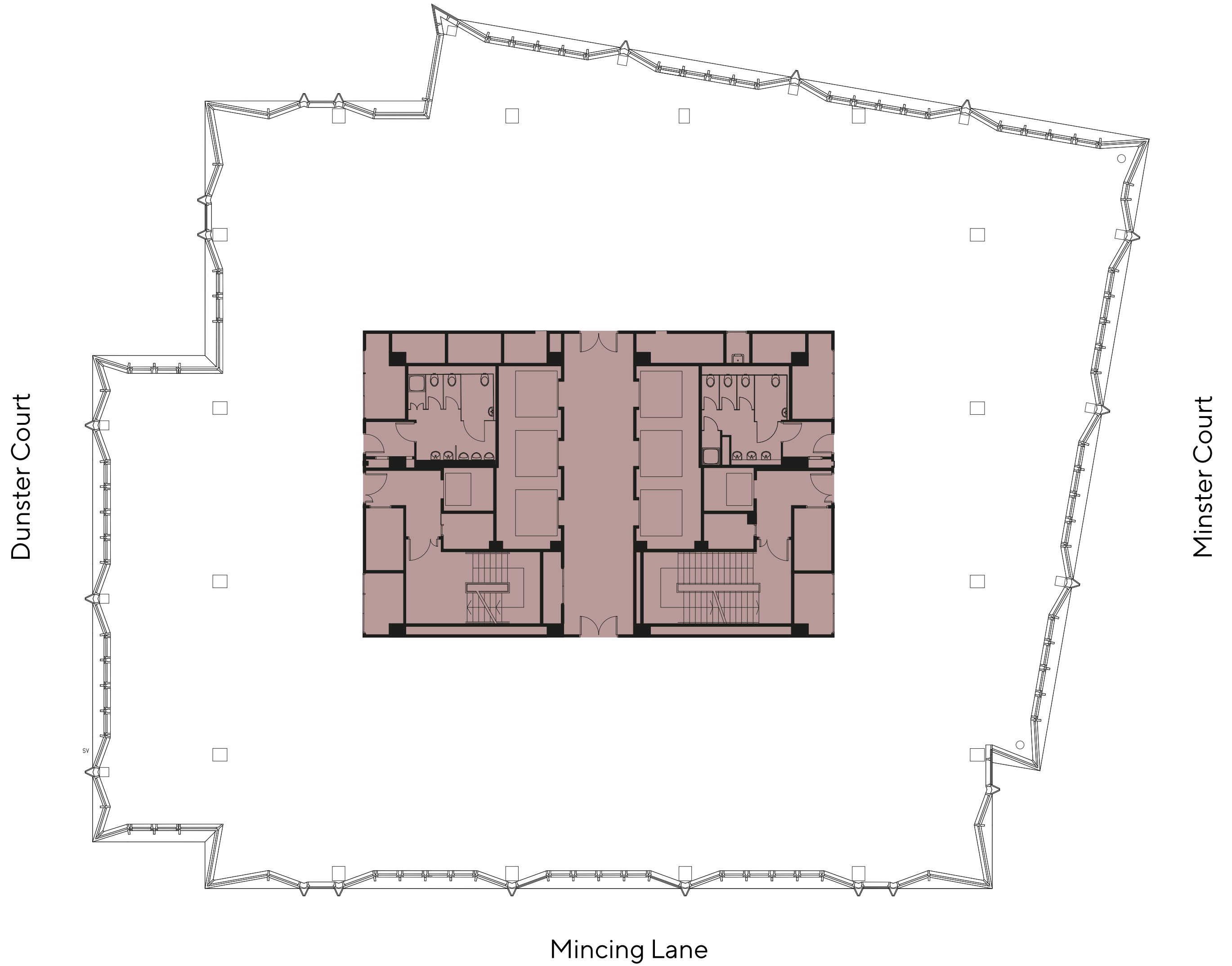
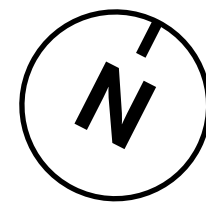
First Floor

11,007 sq ft

1,023 sq m

□ Office Space

■ Core



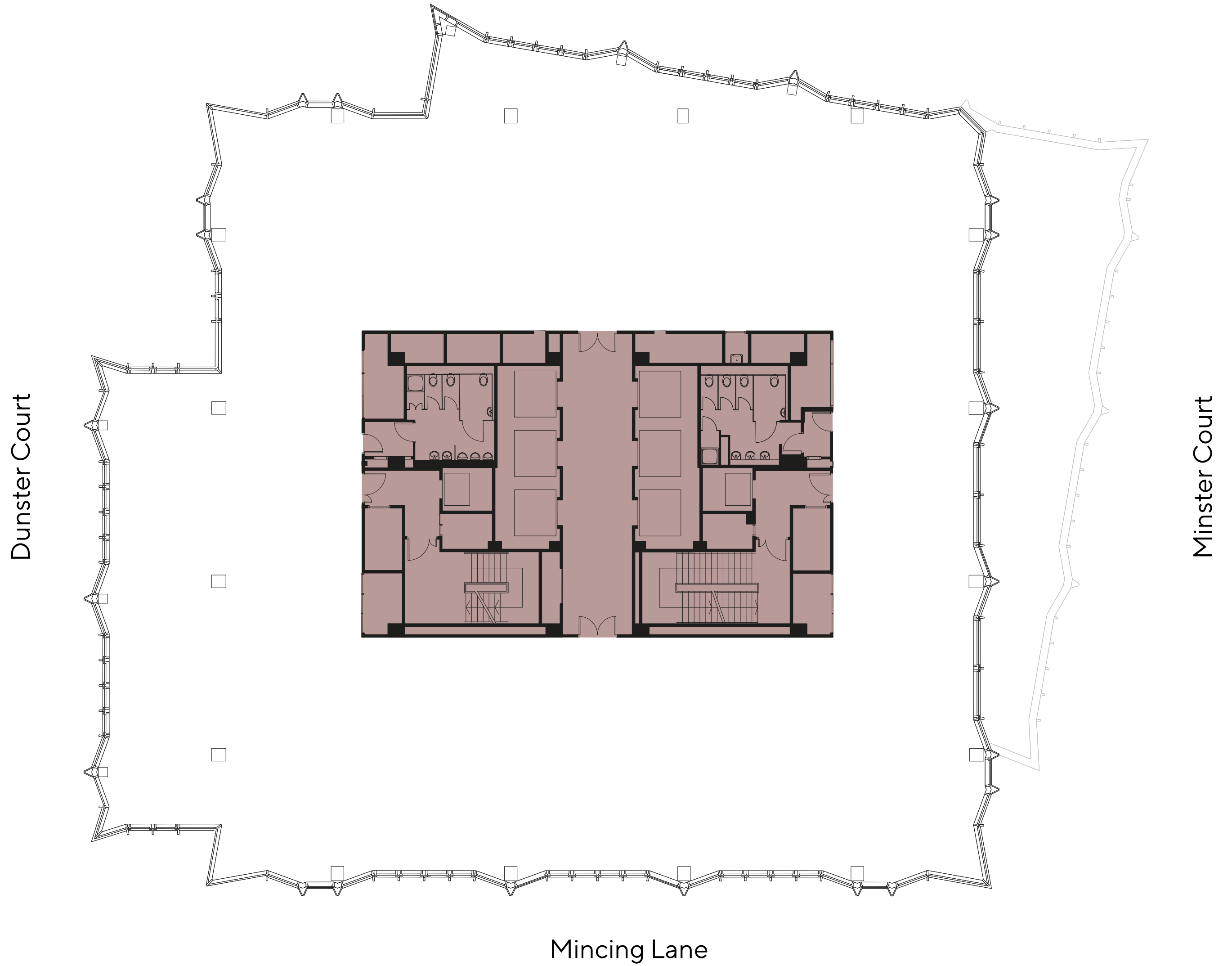
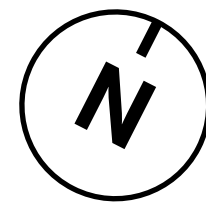
Floorplan

Second Floor

9,755 sq ft

906 sq m

□ Office Space ■ Core





Contemporary finishes to renew and refresh an iconic building.

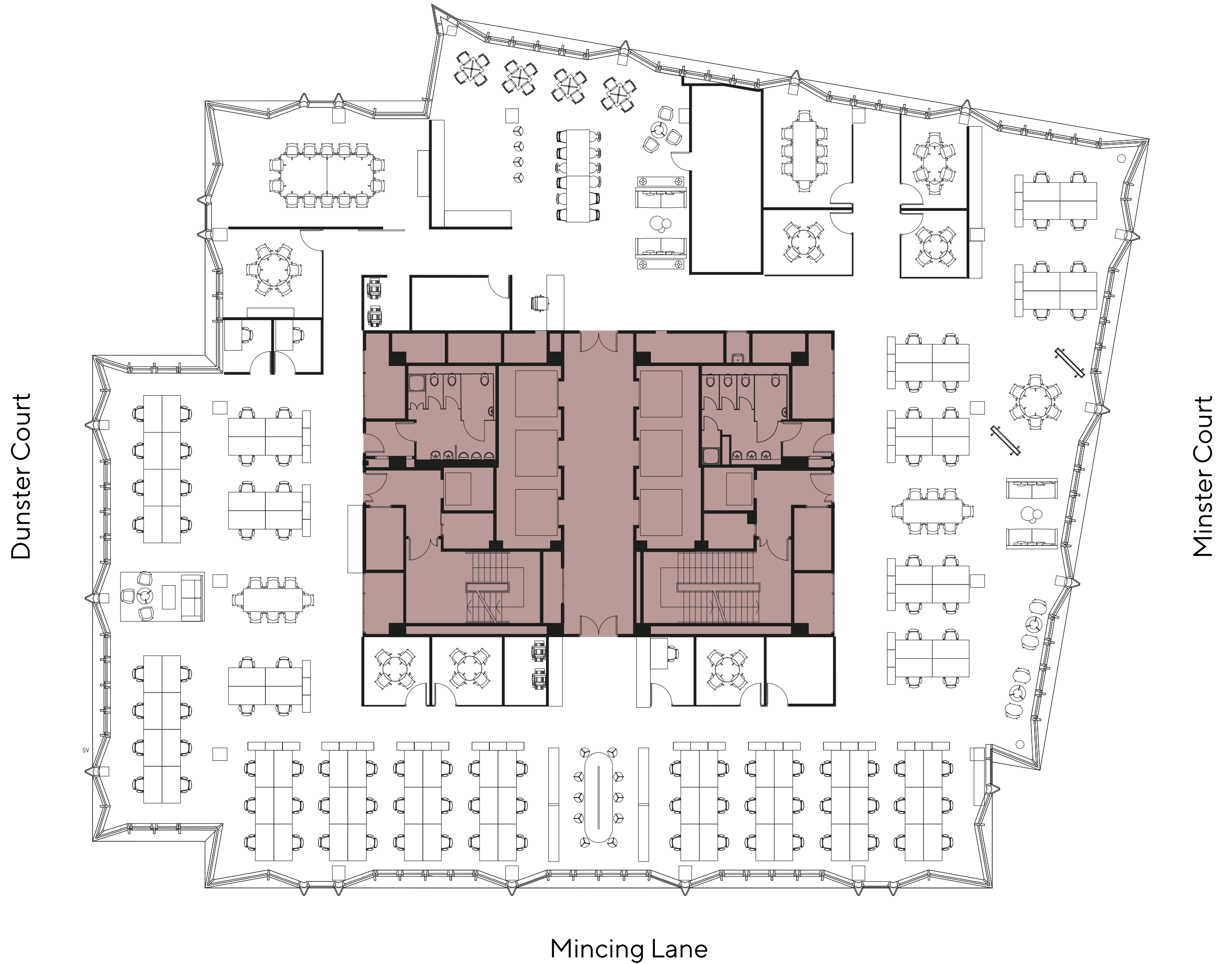
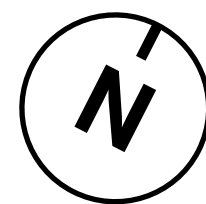
Corporate Plan

First Floor

11,007 sq ft
1,023 sq m

- | | |
|----------------------------|--------------------------|
| 100 Open plan desks | 14 Breakout areas |
| 12 Meeting rooms | 2 Receptions |
| 3 Private offices | 2 Print hubs |

□ Office Space ■ Core



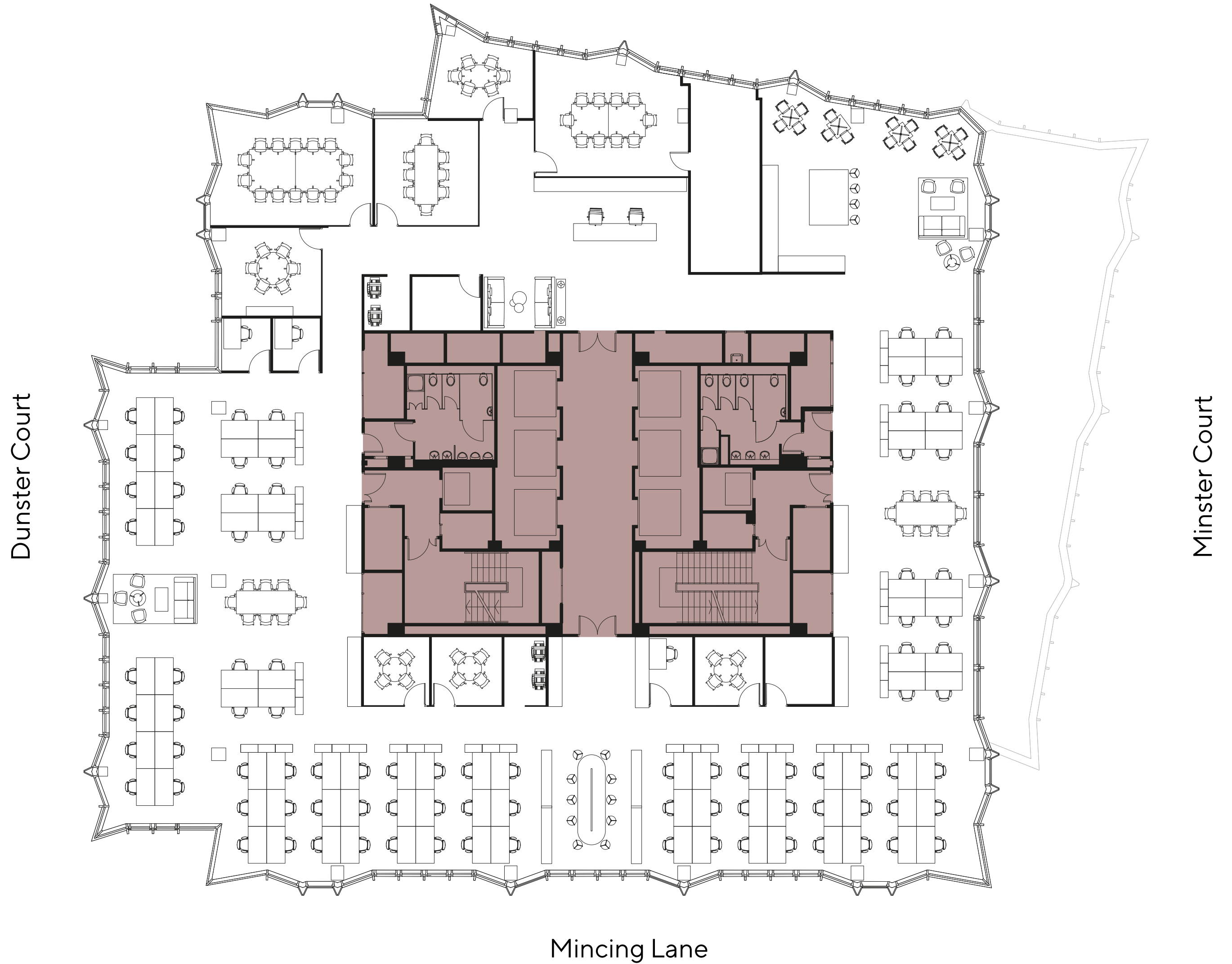
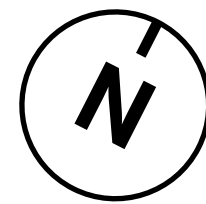
Corporate Plan

Second Floor

9,755 sq ft
906 sq m

- | | |
|---------------------------|--------------------------|
| 94 Open plan desks | 10 Breakout areas |
| 10 Meeting rooms | 1 Reception |
| 3 Private offices | 2 Print hubs |

□ Office Space ■ Core





Refined, refurbished, reimagined.

New contemporary
reception

New business lounge

New on-floor
VAV air conditioning

New modular and
exposed ceiling system

LED lighting

6 x 21 person passenger lifts

Cycle parking and showers

Secure car parking

Tenant standby power



Spoilt for choice.

From Leadenhall market to St Katharine Docks, enjoy a vast range of amenities in every direction.



Leadenhall Market

Amenities at Minster Court

Whether you're working out at premium fitness club, Third Space, or working through the extensive menu of craft beers at Brewdog, it's all on your doorstep.



East India Arms

From formal to fun, inspiring to impressive.

The City has evolved and now offers a real mix of eateries, bars and retail options to explore.



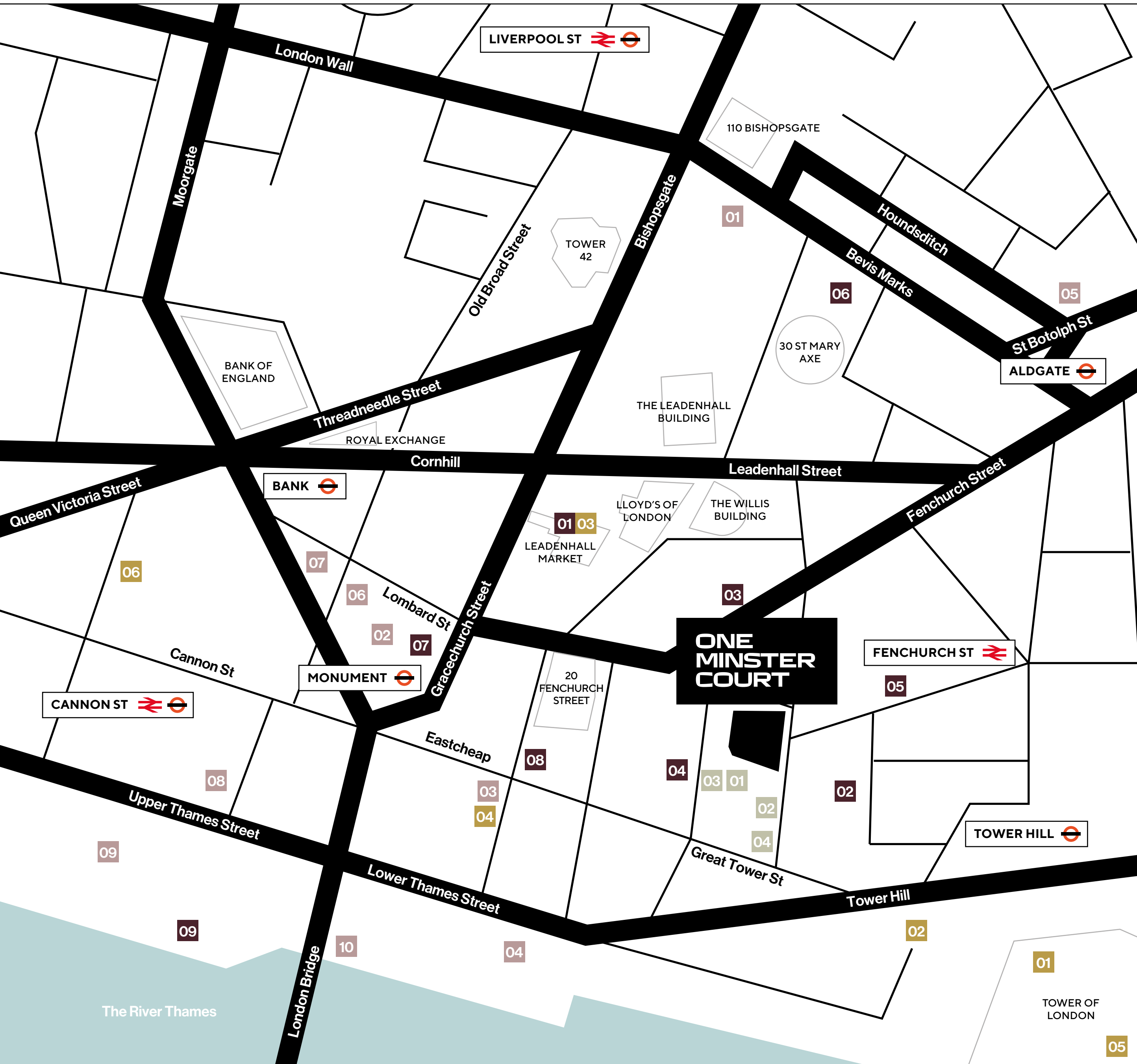
St Katharine Docks



Kirin



Sky Garden



Make the most of the city.

At Minster Court

- 01 Balls Brothers
- 02 Third Space City
- 03 Tank & Paddle
- 04 BrewDog Tower Hill

Dining & Drinking

- 01 Leadenhall Market
- 02 The Lampery
- 03 14 Hills
- 04 Davy's at Plantation Place
- 05 Kirin Japanese Restaurant & Bar
- 06 The Alchemist Bevis Marks
- 07 The Folly
- 08 Blacklock City
- 09 The Oyster Shed

Wellness & Leisure

- 01 Equinox - Bishopsgate
- 02 Boom Cycle - Monument
- 03 Light Centre - Monument
- 04 The Gym Group - Monument
- 05 PureGym - Aldgate
- 06 The Foundry - Bank
- 07 PureGym - Bank
- 08 Gymbox - Cannon Street
- 09 Nuffield Health City Fitness & Wellbeing Gym
- 10 Fitness First - Monument

Arts & Culture

- 01 Tower of London
- 02 London Wall
- 03 Leadenhall Market
- 04 Monument to the Great Fire of London
- 05 St Katharine Docks Marina
- 06 London Mithraeum



Did someone say 'seriously well connected?'

Located in the heart of EC3,
One Minster Court offers
an impressive address and
extensive transport links for
your business and your team.


Tube, train, walk or cycle.

A multitude of tube and rail stations, including Fenchurch Street, Bank and Liverpool Street, are all within walking distance, providing access to an impressively wide network of talent all within a 45 minute commute.



Walking times from One Minster Court

 FENCHURCH ST
2 mins

 BANK ●●●●
5 mins

 CANNON ST ●●
10 mins

 LONDON BRIDGE ●●
15 mins

 MONUMENT ●●●●
4 mins

 TOWER HILL ●●●
7 mins

 LIVERPOOL ST ●●●●
10 mins

Contact us.

Spring4 ■■

Ian Campbell

+44 (0) 7739 161 054
icampbell@spring4.com

Annabel Dickson

+44 (0) 7547 417 744
adickson@spring4.com

**ONE
MINSTER
COURT** LDN EC3

CBRE

Anna Biggin

+44 (0) 7931 842 687
anna.biggin@cbre.com

Alice Alias

+44 (0) 7552 882 971
alice.alias@cbre.com

oneminstercourt.co.uk

Misrepresentation Act CBRE and Spring4, on their behalf and for the sellers or lessors of this property whose agents they are, give notice that: (i) the particulars are set out as a general outline for the guidance of intending purchasers of lessees and do not constitute, nor constitute part of, an offer or contract. (ii) all descriptions, dimensions, references to condition and necessary permissions for use and occupation and other details are given in good faith and are believed to be correct, but any intending purchasers or tenants should not rely on them as statements or representations of fact, but must satisfy themselves by inspection or otherwise as to the correctness of each of them. (iii) no person in the employment of CBRE and Spring4 has any authority to make or give any representation of warranty whatever in relation to these properties. February 2022. Designed and produced by J2.