



### Retail in TS18

Skinner Street, Stockton,  
Stockton-on-Tees, Durham, TS18 1DY

**£50,000** Starting Bid

On Street parking

### Property features

- ✓ Commercial Property For Sale
- ✓ Previously Children's Play Centre
- ✓ Sale Subject to Transfer of Part
- ✓ Stockton Town Centre
- ✓ Excellent Transport Links

## Arrange a viewing

Commercial North East

0191 737 1154  
commercial@pattinson.co.uk

- ✓ Flexible viewing slots
- ✓ Accompanied viewings

## Description

An excellent opportunity to purchase a commercial unit situated within a well-established building on Skinner Street, in the heart of Stockton-on-Tees town centre. The property benefits from strong pedestrian flow and close proximity to Stockton High Street, a range of national and independent retailers, cafés, professional services, and public amenities.

This ground floor unit offers versatile accommodation suitable for a range of uses (subject to the necessary consents). The premises was previously utilised as a children's soft play centre, offering open-plan space well-suited to leisure, recreational, retail, office, or other service-based operations.

The location provides excellent accessibility, with convenient access to local bus routes and Stockton railway station within walking distance. Several public car parks are located nearby, ensuring ease of access for customers and staff.

This property presents an attractive opportunity for owner-occupiers or investors seeking a centrally located commercial unit within an established and well-connected trading area of Stockton-on-Tees.

Further details, including price and viewing arrangements, are available upon request.

Price: Starting Bid £50,000

Property Type: Retail

Business Type: Other/Unspecified

Internal Size: 2336 Square Feet

External Size: 2336 Square Feet

Parking: On Street

## **Location**

The subject property is located along Skinner Street, Stockton-on-Tees. The property is well located a minutes walk from the High Street for easy access to local amenities and transport links. Stockton is located 4 miles west of Middlesbrough and 27 miles south of Durham.

---

## **Tenure**

Sale is subject to transfer of part.

---

## **EPC**

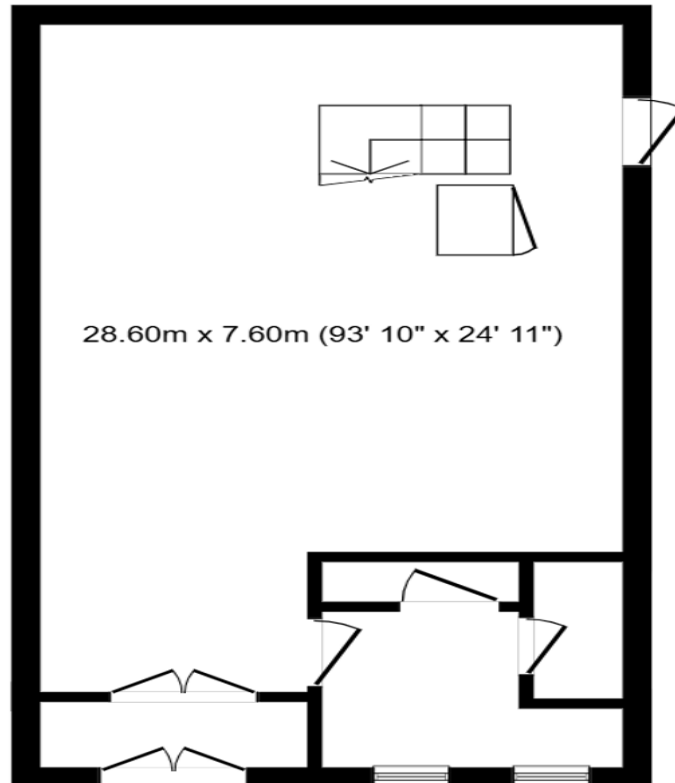
Available upon request.

---

## **Additional Information**

For further information please contact the Stockton Branch of Pattinsons on 01642 210132 or via email [stockton@pattinson.co.uk](mailto:stockton@pattinson.co.uk).

Skinner Street, Stockton-on-Tees, TS18 1DY



Skinner Street, Stockton, Stockton-on-Tees, Durham, TS18 1DY

Contact your local branch today for more information on this property:

**Mercantile House Kingfisher Way, Silverlink Business Park, Wallsend, Wallsend, NE28 9NY, Tel: 0191 737 1230, commercial@pattinson.co.uk , www.pattinson.co.uk**

These particulars, whilst believed to be accurate are set out as a general outline only for guidance and do not constitute any part of an offer or contract. Intending purchasers should not rely on them as statements of representation of fact, but must satisfy themselves by inspection or otherwise as to their accuracy. No person in this firms employment has the authority to make or give any representation or warranty in respect of the property.

