

TO LET

**KIRKTON DRIVE, RAITHS INDUSTRIAL ESTATE, DYCE**  
ABERDEEN  
AB21 0BG

**SOUTH BUILDING PLUS SECURE YARD**

**6,036.27 SQ M (64,974 SQ FT)**



## LOCATION

The subjects are located on the east side of Kirkton Drive in Raiths Industrial Estate, a popular and established industrial area, approximately 7 miles north west of Aberdeen City Centre.

The estate benefits from excellent transport links and is in close proximity to Aberdeen International Airport. Transport links have recently been further enhanced with the opening of Aberdeen's Western Peripheral Route.

Surrounding occupiers comprise a number of global oil companies which include **Helix Well Ops**, **Siemens**, **Stork Technical Services**, **Pentagon Freight Services** and **Oceaneering**.

## DESCRIPTION

The property comprises part of a larger facility and comprises the South Building which is a modern detached industrial unit split into three workshop bays, together with two storey office accommodation and a secure concrete yard with gatehouse.

Internally, the subjects benefit from the following specification:

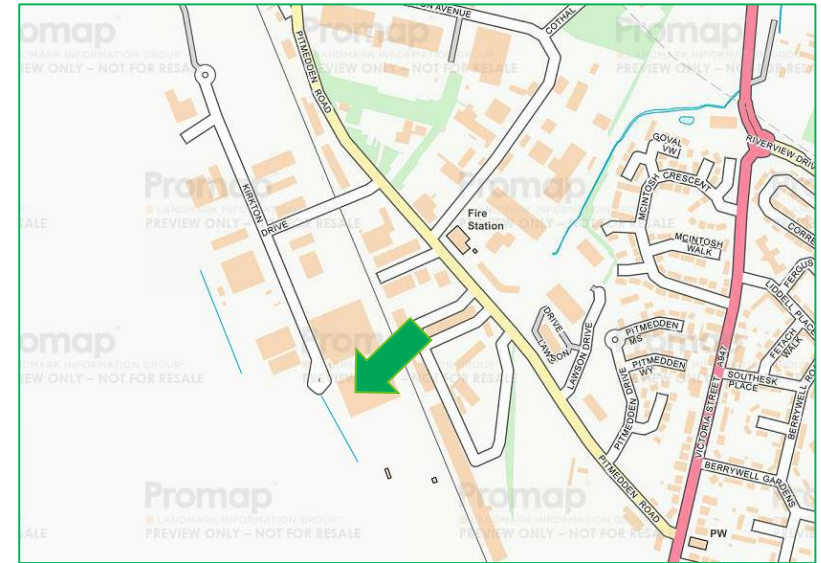
### Warehouse

- A reinforced concrete slab floor
- Wallhead height of 8.80 Metres
- Vehicular access via 6 Electrical roller shutter doors (5.5m high x 6.0m wide)
- Artificial lighting by high bay sodium spotlights
- Industrial warm air blowers
- 2 x 5 Tonne overhead gantry cranes

### Office

- Mixture of open plan and cellular accommodation
- Carpeted flooring
- Painted plasterboard lined walls
- Gas central heating radiators
- Comfort cooling
- Suspended ceiling with Cat 2 lighting

To the rear and side of the property is a concrete surfaced open storage yard that is secured by a perimeter fence. Car parking is provided at the front of the unit with 22 allocated parking spaces



## ACCOMMODATION

The property comprises the South Building of the following approximate gross internal floor areas:

Floor	SQ M	SQ FT
Offices (Two Storey)	1,537.31	16,548
Warehouse	4,498.96	48,426
<b>TOTAL</b>	<b>6,036.27</b>	<b>64,974</b>
Concrete Yard (Net)	6,672.45	71,822

## LEASE TERMS

The property is currently held as part of a larger entity on an existing lease expiring 19 April 2027.

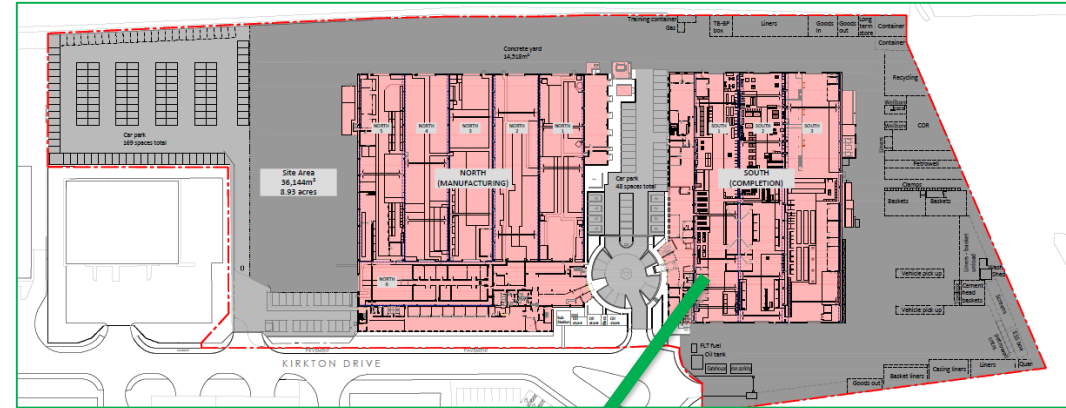
Our client is looking to sub-lease the premises on flexible terms. Sub-letting in part will be considered.

## RENT

Upon application.

## RATEABLE VALUE

The subjects form part of a larger entry and will require to be re-assessed upon entry.



## ENERGY PERFORMANCE CERTIFICATE (EPC)

Further information is available on request.

## LEGAL COSTS

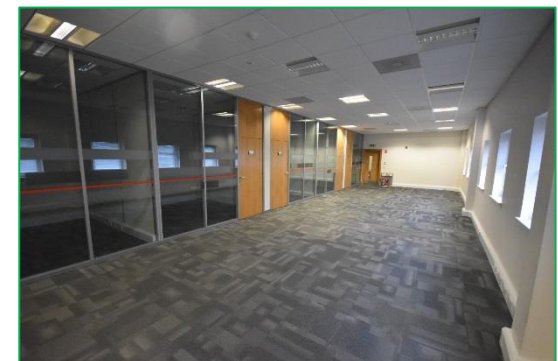
Each party will bear their own legal costs incurred documenting this transaction. The ingoing occupier will be responsible for any LBTT and Registration Dues if applicable.

## DATE OF ENTRY

To be agreed.

## VIEWING & FURTHER INFORMATION

For further information or viewing arrangements, please contact the sole agents.



## CONTACT US

### CBRE Ltd

1 Albyn Terrace  
Aberdeen  
AB10 1YP

### Iain Landsman

01224 219016  
iain.landsman@cbre.com

### Amy Tyler

01224 219034  
amy.tyler@cbre.com