



50 Golborne Road

London, W10 - Notting Hill



Bright shop on fashionable street White-boxed unit available for pop-up or lease



50 Golborne Road
London, W10

474 sq ft



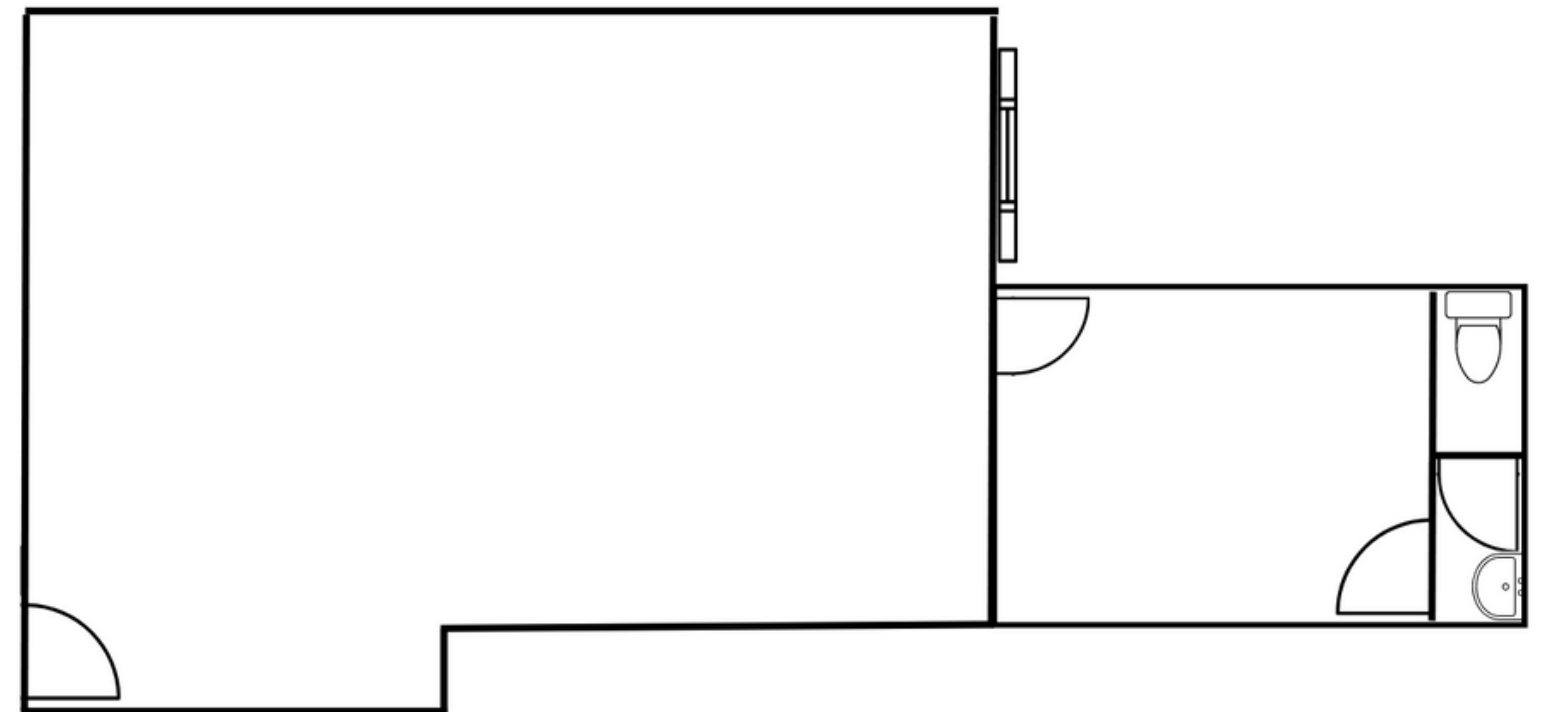
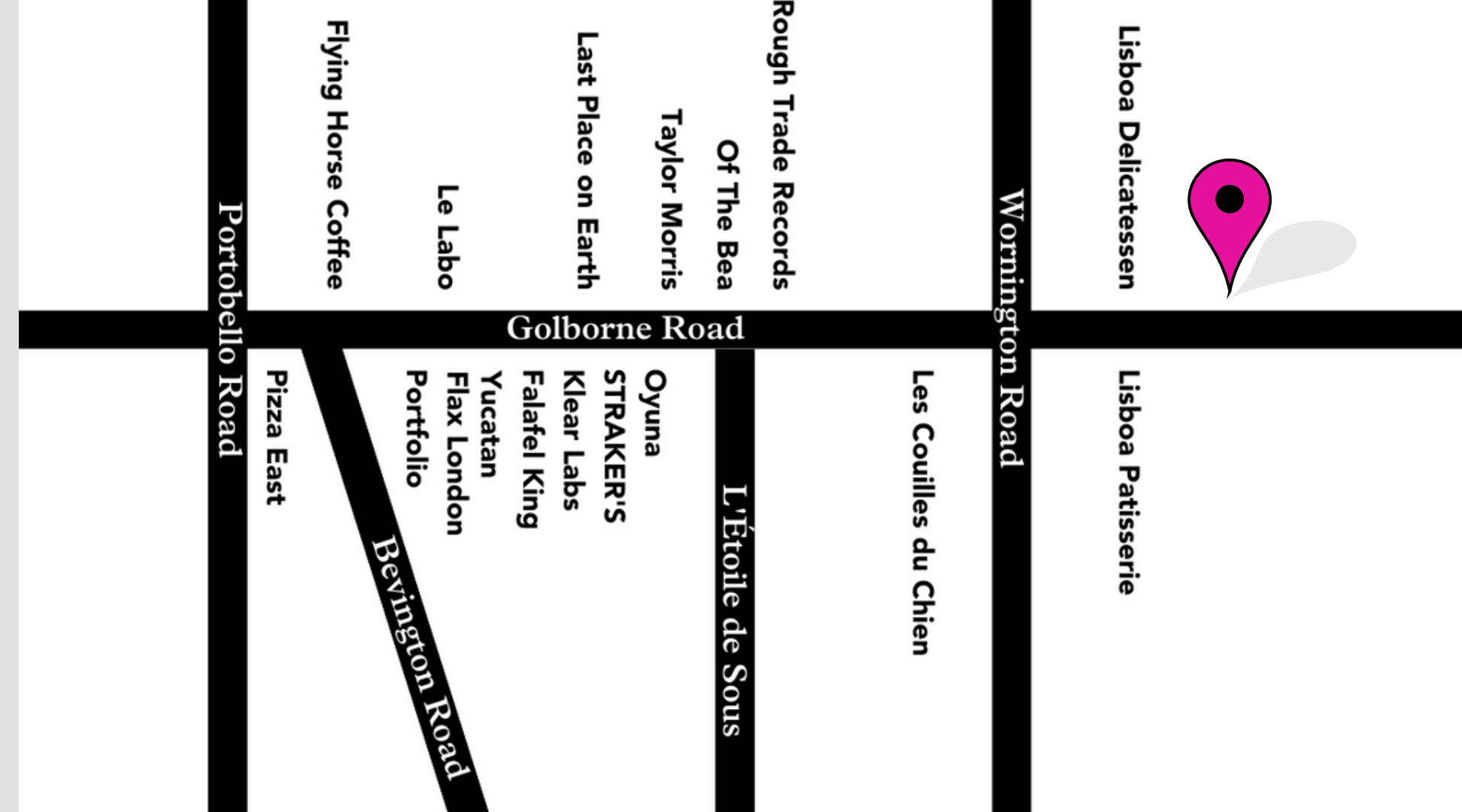
Description

The property is located on one of Notting Hill's most eclectic streets, Golborne Road, just off Portobello Market. The surrounding area is famous for its mix of independent shops, restaurants and markets.

Location

Nearby occupiers include Straker's, Caia, Pizza East, Laylow, Panella, Cha Cha, Golborne Deli, Le Labo, Cubitts, Layla, and Flying Horse Coffee. Public transport is accessed via Ladbroke Grove and Westbourne Park Station.

50 GOLBORNE ROAD, LONDON W10





Information

- 7-day trade
- Bohemian location
- White boxed
- Great transport links
- Excellent natural light
- E class use space



50 GOLBORNE ROAD, LONDON W10







Availability

Floor Areas	Quoting Rent	Business Rates	Service Charge
474 sq ft	£35K pax	£12,800 pa	TBC

Londonsuper gives notice that these particulars are set out as general outline only for the guidance of intending purchasers or lessees and do not constitute any part of an offer or contract. Details are given without any responsibility and any intending purchasers should independently verify any details set out herewith. Lessees or Third Party should not rely on them as statements or representations of fact, but must satisfy themselves by inspection or otherwise as to the correctness of each of them. No person in the employment of Londonsuper or KLM has any authority to make any representation or warranty whatsoever in relation to this property.

EPC has been commissioned and is available on request.

50 GOLBORNE ROAD, LONDON W10



GET IN TOUCH

✉ hi@londonsuper.com

📷 [@ldnspr](#)

🎵 [@ldnspr](#)

 LONDONSUPER