

TO LET

UNITS 8&9, PICKWICK WALK
UXBRIDGE ROAD, HATCH END, HA5 4HS



224 SQFT / 20 SQM
SMALL LOCK UP RETAIL UNITS - TO LET

| Key Features

- Tiled floors
- Electrical lighting
- Carpets
- Kitchenette
- Communal Toilet Facilities

For further information, please contact:


david charles
property consultants

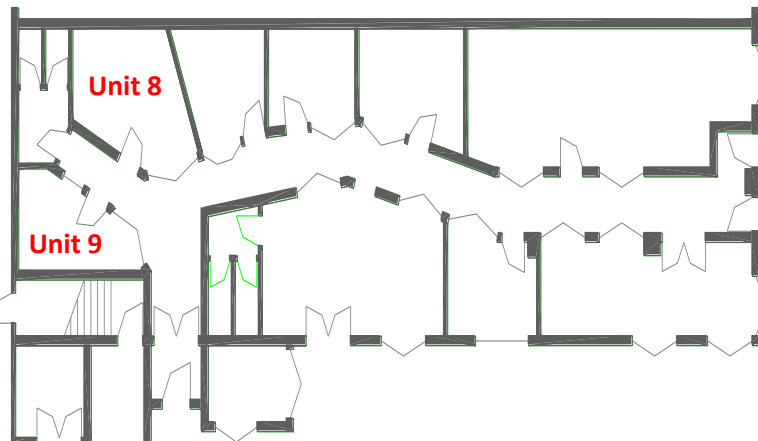
Lily O'Donnell- 020 8429 9009
lily@davidcharles.co.uk

29 High Street | Pinner | Greater London | HA5 5PJ
T 020 8866 0001 E info@davidcharles.co.uk
davidcharles.co.uk

TO LET

UNITS 8&9, PICKWICK WALK UXBRIDGE ROAD, HATCH END, HA5 4HS

Small Lock up Retail Unit



Location

The premises are located on the North Side of Uxbridge Road at its junction with Grimsdyke Road and within walking distance of Hatch End Mainline Station. The shop is positioned in a prominent location in the heart of the retail area surrounded by numerous shops and restaurants.

The Property

Pickwick Walk comprises 10 retail units within a central pedestrian walkway. Unit 8 & 9 are located internally and is accessed via a walkway from the Uxbridge Road or Grimsdyke Road. The unit has the benefit of bay windows, tiled floor and two entrance / exits.

Rent

£10,000.00 per annum exclusive.

Floor Areas

Unit 8	142 sqft	13.2 sqm
Unit 9	82 sqft	7.6 sqm
Total	224 sqft	20 sqm

Legal Costs

A non-refundable deposit of £600.00 plus VAT towards the Landlords Legal costs will be required in order to secure the units.

Lease

The units are available by way of a new full repairing and insuring leases for a term by arrangement . The lease will be excluded from the Landlord & Tenant Act 1954.

Viewings

Strictly by appointment through sole agents.

Lily O'Donnell – 020 8429 9009
[lily@davidcharles.co.uk](mailto:lily@ davidcharles.co.uk)