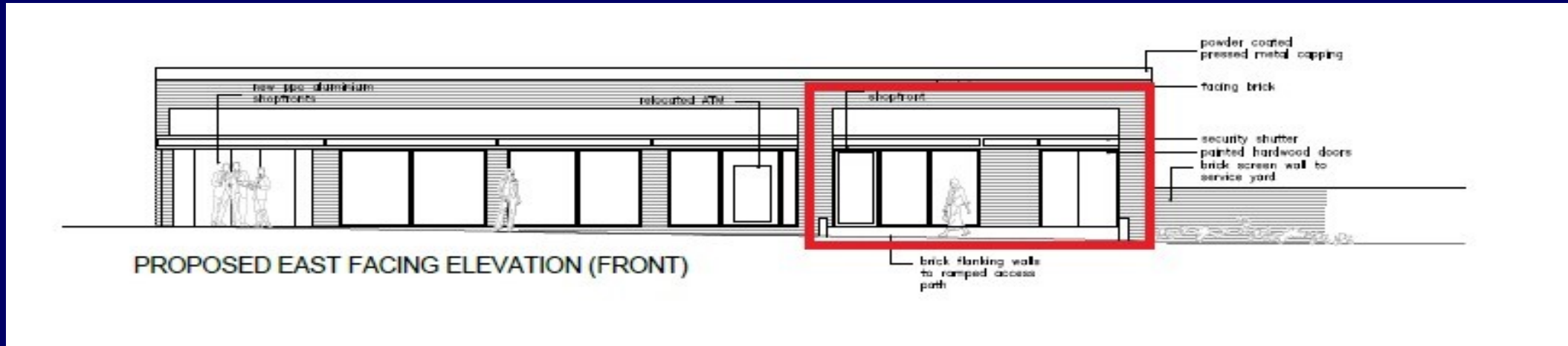


NEW UNIT (CO-OP SPLIT), ST LEGER COURT, GREAT LINFORD LOCAL CENTRE, MILTON KEYNES, MK14 5HA



PUNCH
www.punch.org.uk
01908 311517

APPROX 850 SQ FT— TAKE AWAY USE (STP) & RETAIL

NEW UNIT (CO-OP SPLIT), ST LEGER COURT, GREAT LINFORD LOCAL CENTRE, MILTON KEYNES, MK14 5HA

Current RV:

RV to be established. This will be a new unit.

Terms:

Details regarding rent and other terms are available on application to Patrick Punch & Co.

Viewings:

Further information and viewings strictly by appointment only via

Punch Retail & Leisure

01908 311517

info@punch.org.uk

Terms:

Available on a new lease. Details regarding rent and other terms are available on application to leasing agents.



MISREPRESENTATION ACT

PATRICK PUNCH & CO. FOR THEMSELVES AND FOR THE VENDORS OF THIS PROPERTY WHOSE AGENTS THEY ARE GIVEN NOTICE THAT; (I) THE PARTICULARS ARE PRODUCED IN GOOD FAITH, ARE SET OUT AS A GENERAL GUIDE ONLY AND DO NOT CONSTITUTE ANY PART OF A CONTRACT; (II) NO PERSON IN THE EMPLOYMENT OF PATRICK PUNCH HAS ANY AUTHORITY TO MAKE OR GIVE ANY REPRESENTATION OR WARRANTY WHATEVER IN RELATION TO THIS PROPERTY.

