

Modern environments  
designed to grow  
your business

## Flexible Spaces

Leases from 24hrs / 7 Days /Months /Years

Linwood Point  
Paisley  
PA1 2FB  
United Kingdom

T: 0141 848 0777

### HOURS OF BUSINESS

Monday to Saturday  
8.00am - 6.00pm  
Sunday  
10.00am - 4.00pm

### LOCATIONS

Burnley  
Blackburn  
Blackpool  
Derby  
Glasgow  
Liverpool  
Padiham  
Preston  
Ribble Court

## GLASGOW

NEW BUILD MANAGED BUSINESS CENTRE  
FROM 650 SQ/FT - 4,000 SQ/FT  
GLASGOW, RENFREWSHIRE  
PA1 2FB

**BUSINESS FIRST**  
BUSINESS CENTRES

## Why Business First Offices?

Business First is part of a global company, Group First, who have office complexes, storage warehouses and parking facilities throughout the nation. We are proud of our business facilities, the detail and technological requirements for scalable commerce.

### ADDRESS

Linwood Point  
Paisley  
PA1 2FB  
United Kingdom

### CONTACT DETAIL

T: 0141 848 0777  
E: [sales@businessfirst.co.uk](mailto:sales@businessfirst.co.uk)  
[www.businessfirst.co.uk](http://www.businessfirst.co.uk)

### HOURS OF BUSINESS

Monday to Saturday  
8.00am - 6.00pm  
Sunday  
10.00am - 4.00pm

### AVAILABLE SPACES

650 sq/ft - 4,000 sq/ft



# We give you more managed facilities...

SCALABLE FURNITURE /IT /TELEPHONY PACKAGES ALSO AVAILABLE

- 1 A welcoming reception with professional meet and greet service
- 2 24 hour digital CCTV, burglar alarms, smoke detectors, fire alarms, emergency lighting, key fob entry with secure access doors, disabled access, security and first aid equipment
- 3 A choice of impressive places to meet customers - from the informal break-out facilities to air-conditioned boardroom-style suites which are typically found in the head quarters of large blue chip organisations
- 4 Access to boardrooms and meeting rooms across the UK complimentary to all tenancies. Facilities include white board, the latest audio visual technology, air conditioning, tea, coffee & water facilities

Open office suites available  
Virtual office services on site

#### INCLUSIVE FACILITIES MANAGEMENT

- Post and parcel management
- Disabled access and facilities
- On site parking
- On site recycling
- Delivery acceptance service
- Communal cleaning service
- Senator furnished breakout areas
- Siematic kitchens with dining areas



## Inexpensive, Secure & Functional

Luxurious office accommodation has never been as competitively priced with outstanding facilities as standard.

Our Glasgow Business Centre quite simply has it all – it's one of the biggest centres in Europe with a host of office suites and storage solutions under one roof. Many of our customers take advantage of both, resulting in attractive benefits for their business.

- 5 Kitchens with seating, cooking facilities, refrigerators, dishwashers and hot water
- 6 Lift access to each level
- 7 We have shared and dedicated bandwidth options, client local area networks and static IP addresses.

8 Access to a 70 seater conference room with audio visual presentation equipment available for tenant usage and external companies holding events

9 Fully equipped gym on site with the latest cardio machines complimentary to all tenancies with Business First

WELCOME TO

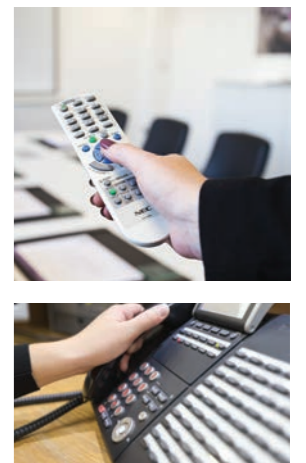
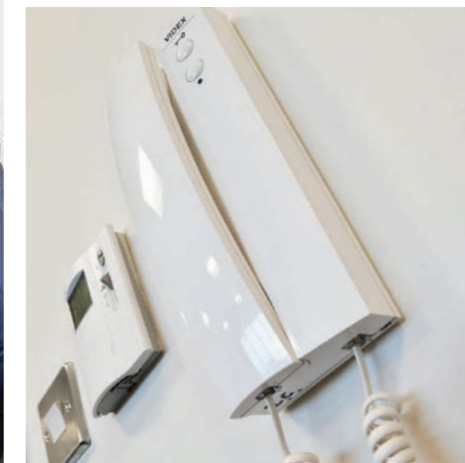
GLASGOW



## Motivational Environments

Modern, smart surroundings take your business to the next level and keep your staff inspired for success.

**BUSINESS FIRST**  
BUSINESS CENTRES



## IT > Telephony > Internet > Package Options

Our packages include top of the range, dedicated telecommunications and IT systems tailored to your exact requirements with none of the high capital costs usually required - equipment available from the day you move in!

- > Save money on outbound calls through our Samsung IP telephony systems. We take care of all the setup and can issue you a range of numbers for your business

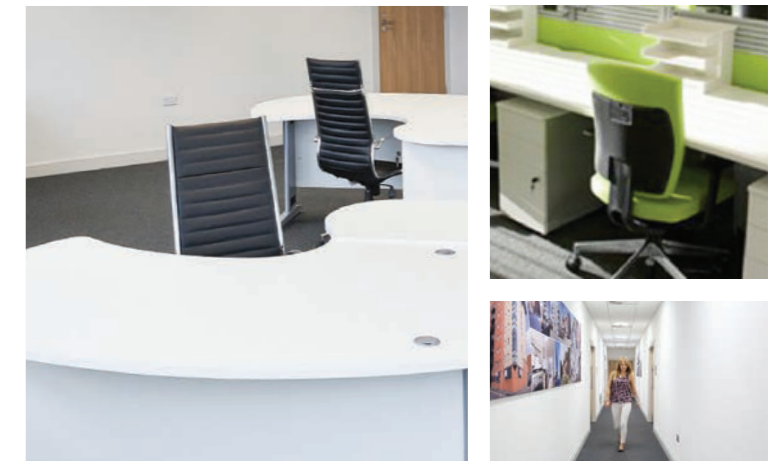


FIRST

### Modern Furniture > Layout Design > Package Options

Our in-house design teams are on hand to help you with advice, design and installation - they will make sure you optimise the space available and make it work for you. We have all types of furniture packages to suit your budget - both rental and purchase - and will always make sure you get the very best deal possible.

- ▶ Move in with your own furniture or rent or buy packages at any time during your short or long term stay

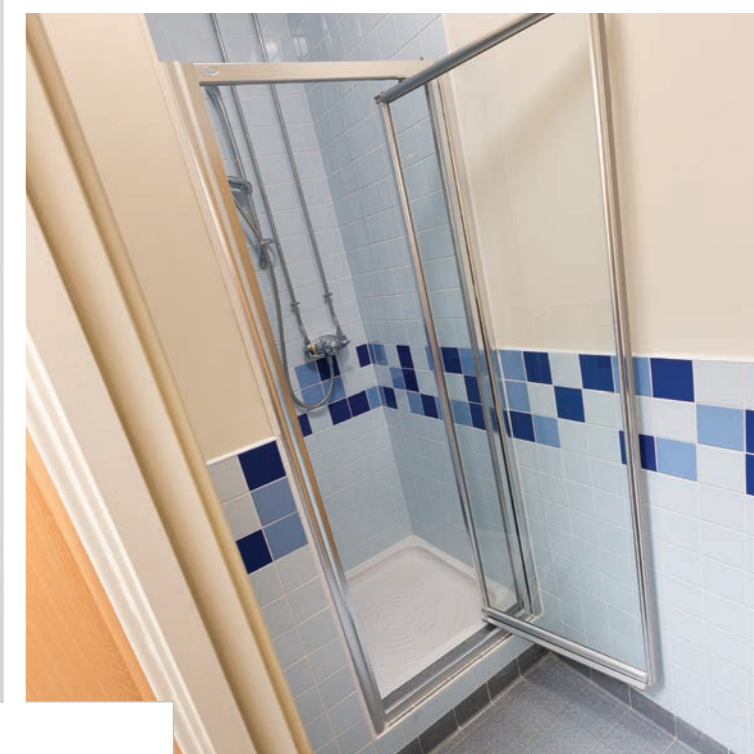
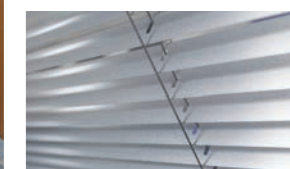
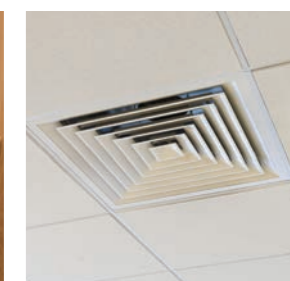




## Shared Spacious Eatery

Spacious, smart Siematic kitchens and relaxed communal dining spaces let you recharge your batteries, catch up with colleagues and network with new contacts.

> Communal kitchen cleaning on a daily basis



## Utilities > Conveniences

Air con, comfort cooling, floating floors, fibre optic broadband and CAT 6 cabling.  
Next level technology that works as hard as you do.

- ▶ Regular cleaning & maintenance included in service charge
- ▶ Fully stocked bathrooms with designer facilities

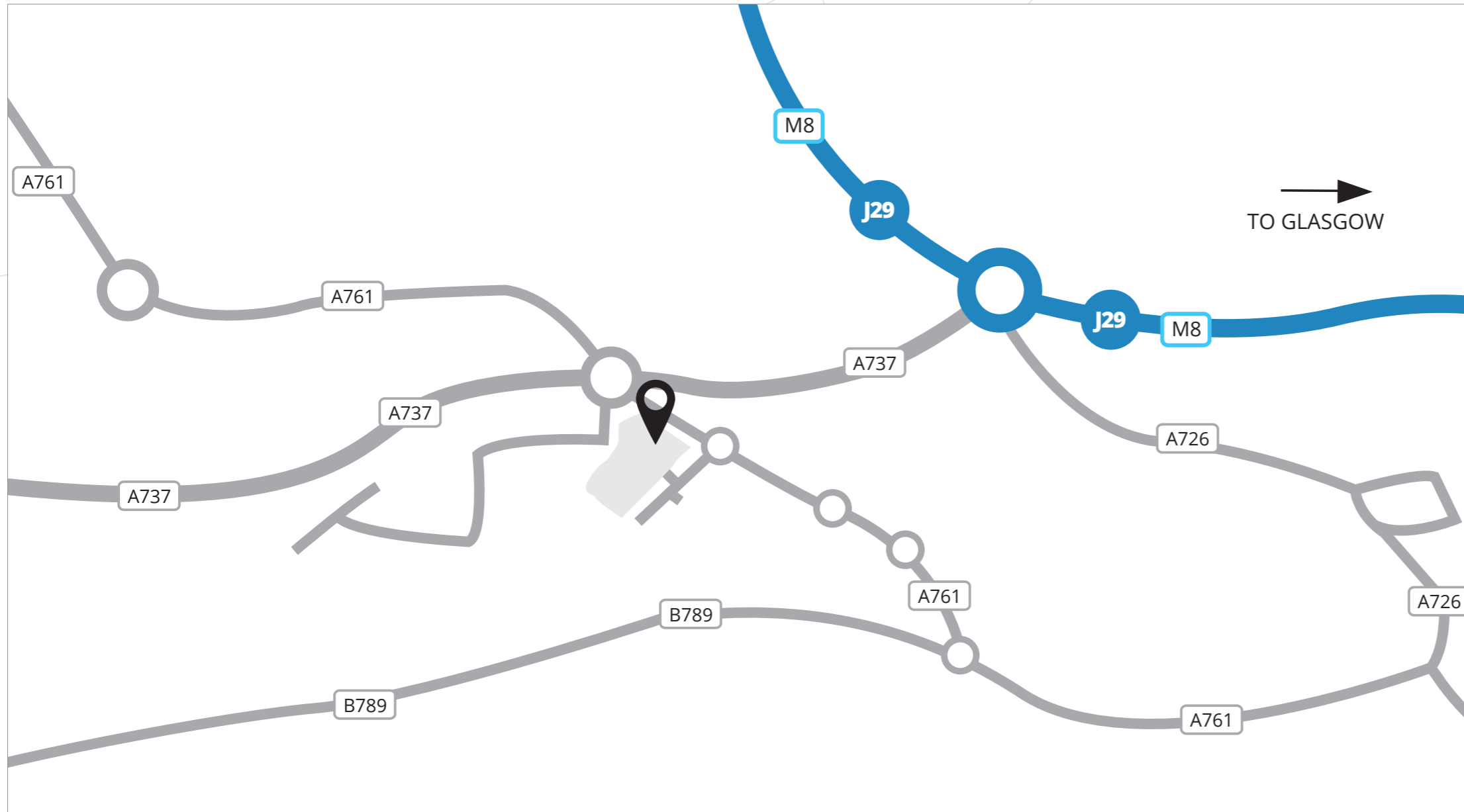
# Glasgow Location > PA1 2FB

LONG:-55.8435542 > LAT:-4.4773209

## Why Glasgow?

Prestigious businesses of all sizes, from solo traders to corporate customers, choose Business First Glasgow as their base thanks to its prime location right next to Glasgow International Airport, with easy road and rail access too.

The business centre enjoys fantastic visibility and is served by copious local amenities for staff and visitors to enjoy, including eateries, shops and other services in easy walking distance and the town of Paisley just a short distance away too.



**ADDRESS**

Linwood Point  
Paisley  
PA1 2FB  
United Kingdom

**CONTACT DETAIL**

T: 0141 848 0777  
E: sales@businessfirst.co.uk  
www.businessfirst.co.uk

**HOURS OF BUSINESS**

Monday to Saturday  
8.00am - 6.00pm  
Sunday  
10.00am - 4.00pm

**AVAILABLE SPACES**

650 sq/ft - 4,000 sq/ft

**Local Lifestyle**

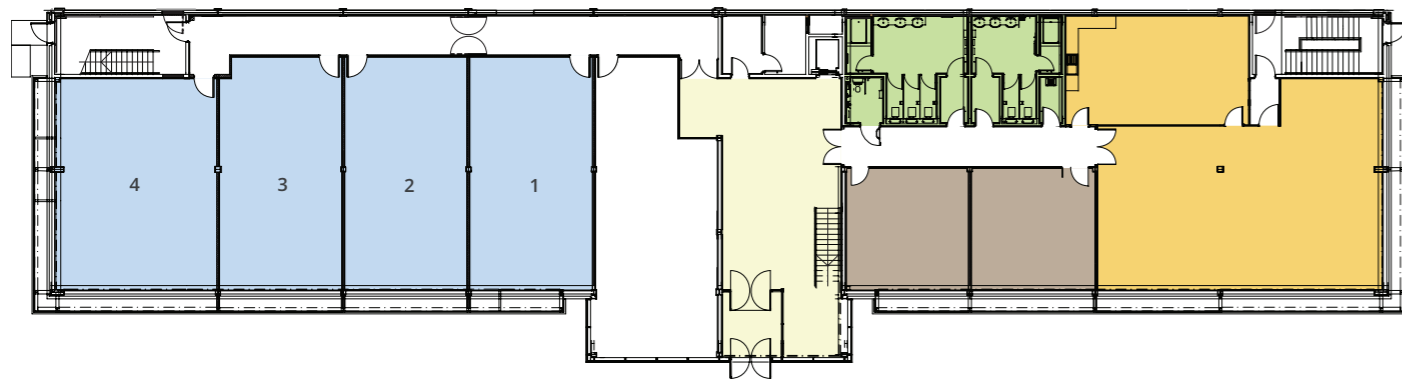


# Available Suites

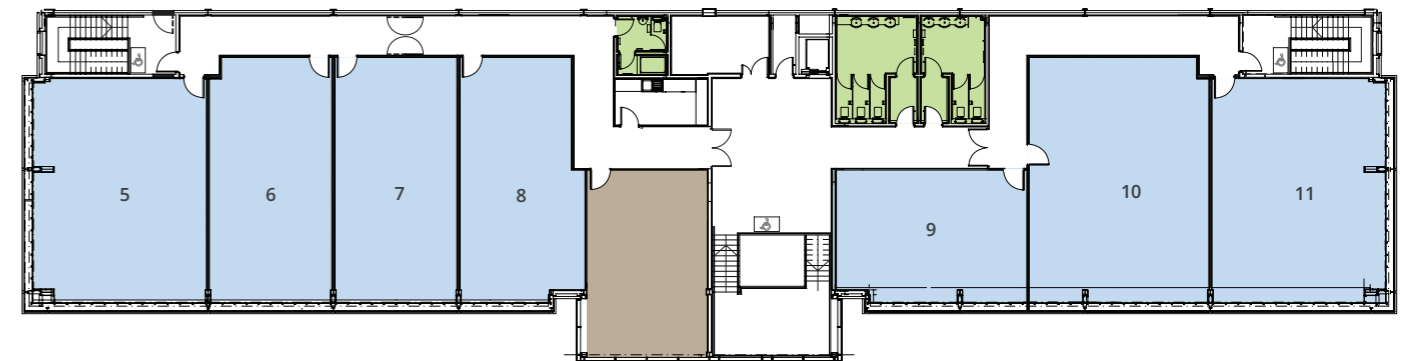
CATERING FOR ALL TYPES OF BUSINESS MODELS

RECEPTION CAFÉ/BREAKOUT AREA OFFICES WC MEETING/CONFERENCE ROOMS

## Ground Floor



## First Floor



### Office Viewings > 0141 848 0777

See for yourself what dynamic workspaces look like - we'll give you a full tour and discuss how to tailor your office to maximise potential performance.

### > Packages Available

Move in with your own furniture / rent or buy packages at any time during your short / long term stay.

- FURNITURE
- COMPUTER EQUIPMENT
- TELECOMMS
- DESIGN AND BUILD OPTION