

17

Thayer Street,
London W1



RETAIL OPPORTUNITY

1,259 SQ FT AVAILABLE

17

Thayer Street, London W1

Marylebone is an affluent residential district in the West End of London and boasting one of the world's most popular retail and leisure destinations.

The premises is located near the prominent junction of Thayer Street and Hinde Street, close to the junction with Marylebone High Street. High quality retailers in the vicinity include Browns Bride, Yves Delorme, and Theory, with Selfridges being just 4-minute walk away (0.2 miles).

The closest station in the vicinity is Bond Street being just a 5-minute walk (0.3 miles) with access to the Central, Jubilee and Elizabeth lines.

The property measures 1,259 SQ FT over ground and basement levels. It is available by way of a new lease contracted outside of the security of tenure and compensation provisions of the Landlord & Tenant Act 1954

Rent on application

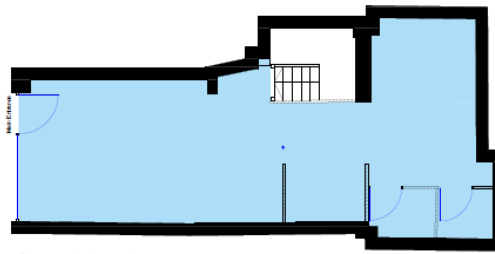
**Anthony
Green &
Spencer**

020 7935 2335

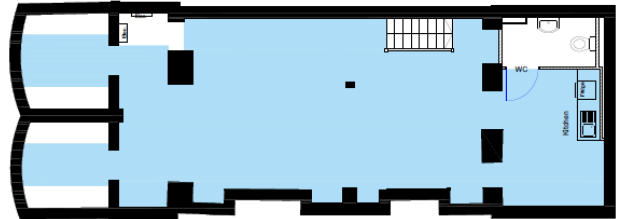
Freddie Walker
Anthony Green and Spencer
M: +44 7436 181218
fw@ags.uk.com



Jimmy Bruce
Ludgate Commercial
M: +44 7881 651809
jimmy@ludgatecommercial.co.uk



Ground Level



Lower Ground



17

Thayer Street,
London W1



These particulars do not constitute an offer or contract. Applicants should satisfy themselves as to the correctness of the details. Value added tax may be payable on rents, prices or premiums. Photographs are for illustration only and may depict items which are not included in the sale of the property. November 2022