

# WIZU

WORKSPACE

32 Eyre Street



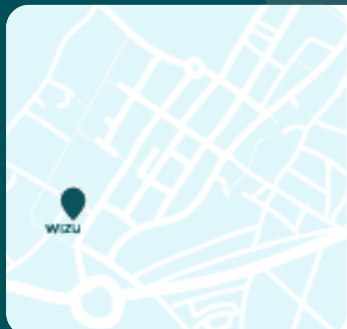
SHEFFIELD

# Eyre Street

32 Eyre St, Sheffield, S1 4QZ


Stunning modern décor, high-level Wi-Fi, and bottomless brews are just some of the pluses that make Eyre Street the go-to workspace in Sheffield. Our helpful team will make you feel welcome and at home from your first day.

The redeveloped building features uniquely designed private offices, cosy co-working space, high-spec meeting rooms, event space and on-site boutique fitness studio.




## GETTING HERE


**Sheffield Train Station**

 10 minute walk

**Sheffield Bus Station**

 12 minute walk

**By Car**

 NCP Parking, 3 minute walk



## 6 AT-A-GLANCE BENEFITS



1. **Flex to the max** - reduce your footprint and cost
2. **Multiple locations** – not only do you get access to your building but you get discount on meeting rooms and co-working at all of our locations
3. **Work-ready** – move in and focus on what you do best
4. **Community** – be part of a fun and inspiring community
5. **Room for growth** – explore new markets with minimal exposure
6. **True to your brand** – customise your space as you wish



## WHAT'S INCLUDED?

**Everything!**  
**All in one simple monthly fee.**



Superfast  
Internet



Breakout  
Space



Rent &  
Utilities



Furniture



Climate  
Control



Showers



Stocked  
Kitchens



Maintenance



Dedicated  
Reception



24 Hour  
Access



Speciality  
Coffee



Bicycle  
Storage



OUR MEMBERS

# The brands making Wizu their home



JELLYFISH PICTURES



# Meeting Rooms & Event Space

Make our stunning rooms your first port of call when you want your meeting to run without a hitch. With our team's support and extras to hand, you can be sure it will go like a dream.



## Chatsworth Suite

Seats up to 10

- Elegant character with a warm ambience
- Modern & professional
- Breakout spaces



## Baslow Suite

Seats up to 6

- Plentiful natural light
- Breakout spaces
- Modern & professional



## Hathersage Suite

Seats up to 4

- Discreet sound-proofing for ultimate privacy
- Elegant décor
- Stunning views of the Peak District landscape



## Castleton Suite

Seats up to 80

- Windows along the full length of the room
- Perfect for large-scale meetings & events
- Internal meeting room



## WIZU LOCATIONS

Join Wizu Workspace and access a network of vibrant spaces



### One Park Court

Park Cross Street, Leeds, LS1 2QH



### Number 32

32 Park Cross Street, Leeds, LS1 2QH



### Park Place

46 Park Place, Leeds LS1 2RY



### Leeming Building

Ludgate Hill, Leeds, LS2 7HZ



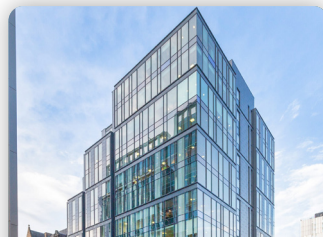
### Richmond House

Lawnswood Business Park, Leeds, LS16 6QY



### Eyre Street

32 Eyre St, Sheffield S1 4QZ



### West Regent St

2 West Regent Street, Glasgow, G2 1RW



### Royal House

110 Station Parade, Harrogate, HG1 1EP



Glasgow

Harrogate

Bradford

Leeds

Sheffield



## NEXT STEPS

# Why Wizu?

Our entrepreneurial founders, who created Wizu in 2016, believe everyone should have an inspiring workspace. As hands-on owners, they understand what businesses want and how to make it happen to deliver the best possible experience.

With expertise in managing flexible, award-winning workspace, they make Wizu the perfect partner for any organisation – big or small.



## Feel good, work better.

Are you looking for a workplace with a 'family feel'? You've found it! We're not distant, faceless landlords. Our founders love to stay in touch with clients, while our friendly local teams have the power to solve and get to know your business.

## Tailor-made, not off-the-peg

You're not the same as the business next door. So, why settle for carbon-copy workspace? We're a wiz at moving walls and prepping your space to match your personality and make you feel at home.

## Inspiring, not soul-destroying

Grey workspace just won't do if you want to inspire creativity, boost productivity and foster collaboration. Our beautiful, comfortable space fits every change of pace – from connecting over a coffee to interacting in a hub or doing focused work.

## GET IN TOUCH

# Let's talk!

0113 468 9300

[sales@wizuworkspace.com](mailto:sales@wizuworkspace.com)

## DIRECT

Nicoletta - 07849 398638

Lily - 07564 051224

## OUR SOCIALS

 [/wizuworkspace](#)

 [/wizuworkspace](#)

 [/WizuWorkspace](#)

 [/wizu-workspace](#)



Feel good,  
work better.