

GAMMA

GREENBANK TECHNOLOGY PARK,
GREENBANK WAY,
BLACKBURN,
BB1 3EA.

TO LET

- Logistics and manufacturing units ■
- 26,500 sq ft. to 132,000 sq. ft. ■
- 13.5 metre eaves height ■
- Completion Q3 2023 ■
- Light industrial units from ■
- 2,500-6,000 sq. ft. ■

Managed by the Adhan Group

GAMMA

LOCATION

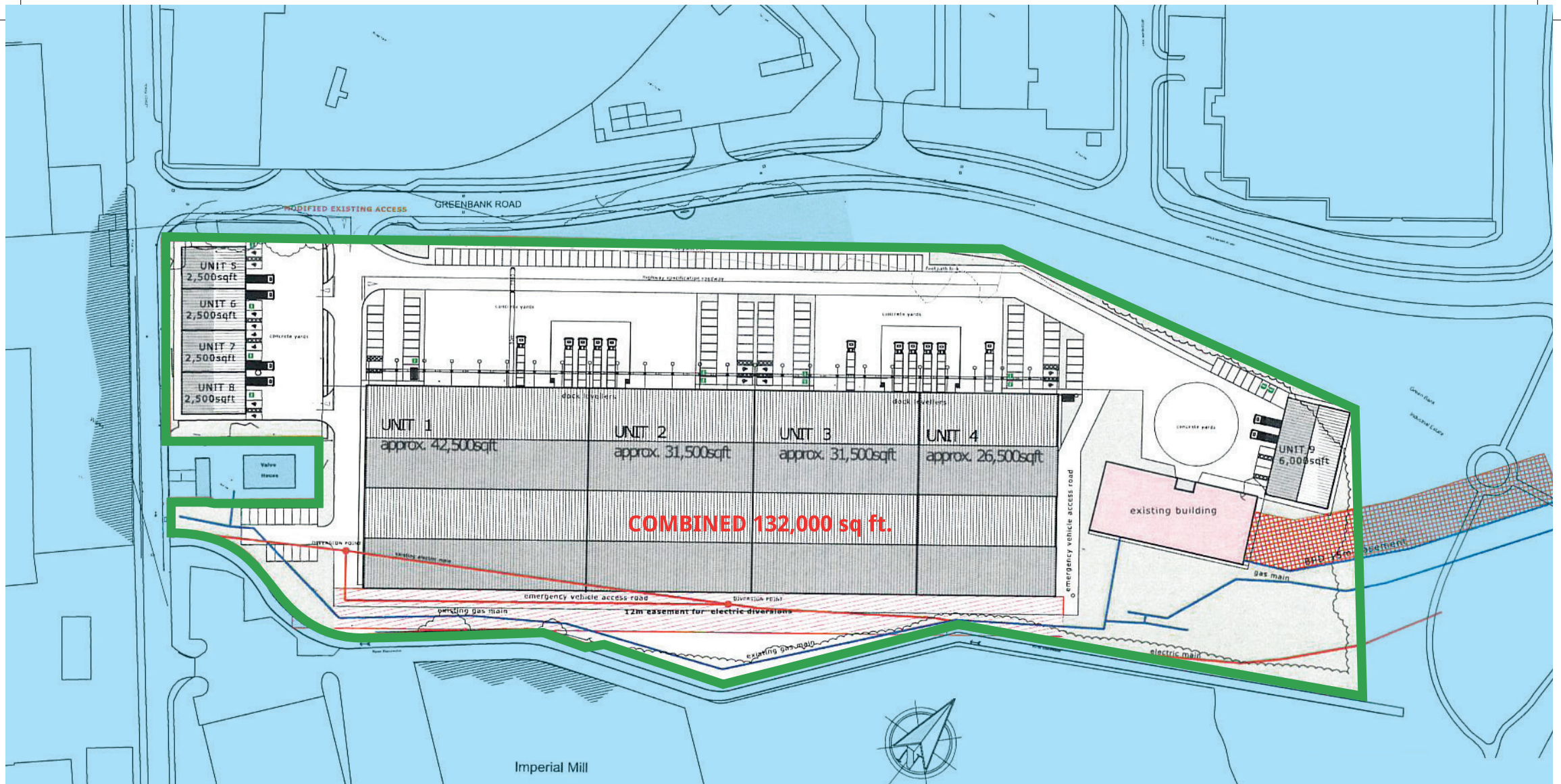
Only a few minutes' drive from Junction 6 of the M65 motorway, Greenbank is a popular logistics and manufacturing location whose occupiers include Silicone Engineering, EMR and Precision Polymer Engineering.

DESCRIPTION

- Units 1-4.
- A single block which can be taken as a whole or divided.
From 26,500 sq. ft. to 132,000 sq. ft.
- Steel portal frame construction, clad in profiled steel.
- Units 5-8 and 9.
- Comprising 2,500 sq. ft. – 6,000 sq. ft. available as a whole or part.

FEATURES

- Eaves heights of 13.5 metres to Units 1-4 and of 6.3 metres to units 5-9.
- Dock level and drive-in loading to each unit over 26,500 foot.
- 5% office content with feature office glazed windows.
- Concrete yards with dedicated parking.
- Internal lighting.
- Three phase power.



RATING

The units will be assessed upon completion
A guide figure is available upon request.

TERMS

A minimum five year lease on full repairing and insuring terms, incorporating rent reviews at agreed intervals.

SERVICE CHARGE

A service charge will be levied in respect of the maintenance of the common areas.

RENTAL

On application.

ENERGY PERFORMANCE CERTIFICATE

Available upon completion.

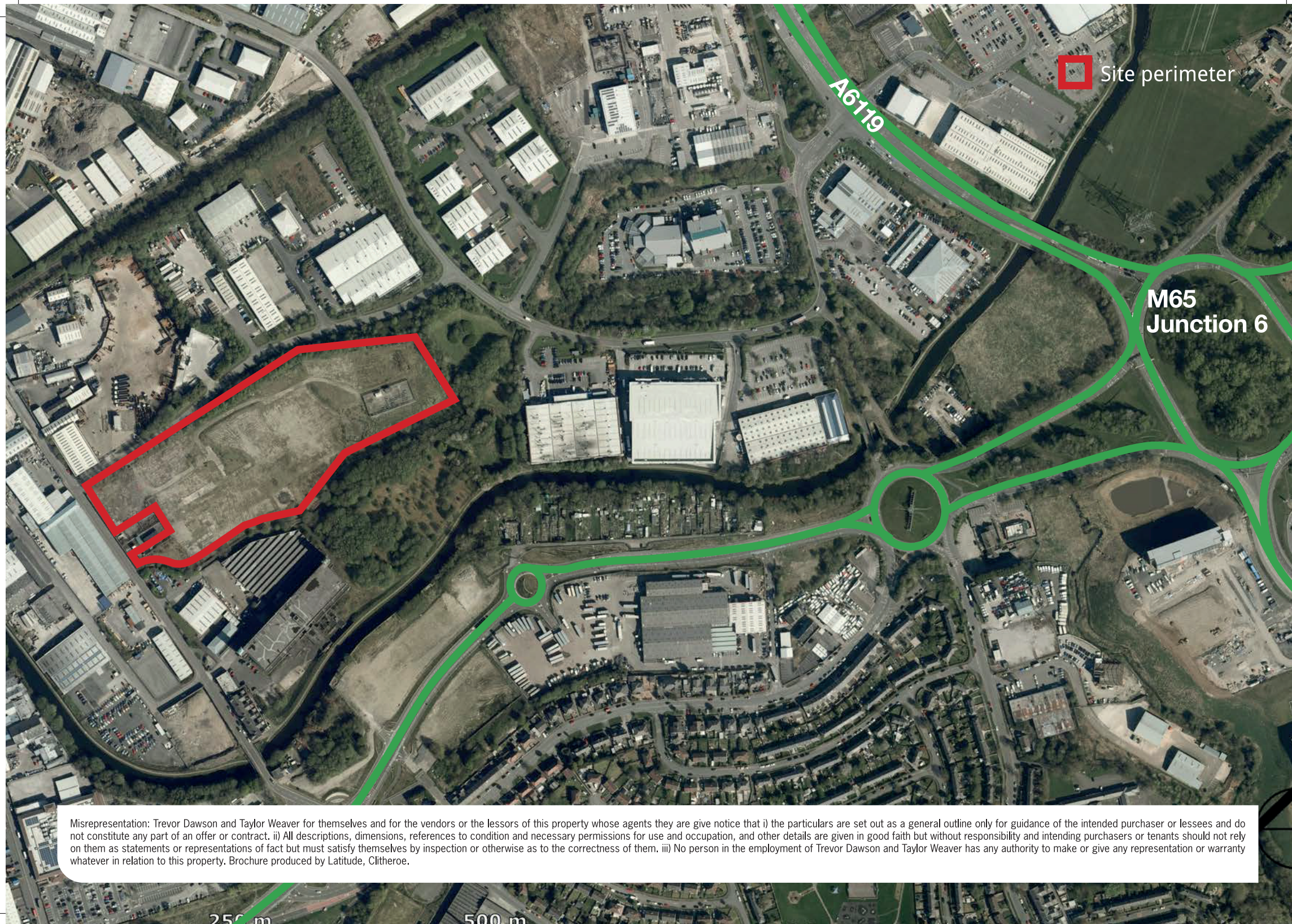
All enquiries please contact the joint agents

TREVOR DAWSON
COMMERCIAL PROPERTY CONSULTANTS
01254 681133
www.tdawson.co.uk

TAYLOR WEAVER
CHARTERED SURVEYORS
01254 699030
www.taylorweaver.co.uk

Caroline James
caroline@tdawson.co.uk

Neil Weaver
neiletaylorweaver.co.uk



Site perimeter

A6119

M65
Junction 6

Misrepresentation: Trevor Dawson and Taylor Weaver for themselves and for the vendors or the lessors of this property whose agents they are give notice that i) the particulars are set out as a general outline only for guidance of the intended purchaser or lessees and do not constitute any part of an offer or contract. ii) All descriptions, dimensions, references to condition and necessary permissions for use and occupation, and other details are given in good faith but without responsibility and intending purchasers or tenants should not rely on them as statements or representations of fact but must satisfy themselves by inspection or otherwise as to the correctness of them. iii) No person in the employment of Trevor Dawson and Taylor Weaver has any authority to make or give any representation or warranty whatever in relation to this property. Brochure produced by Latitude, Clitheroe.

250 m

500 m