



12 Harcourt Street

Marylebone W1

2,159 - 13,223 Sq Ft Newly Refurbished Fitted Offices To Let

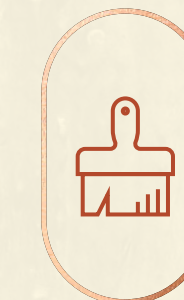


ELEVATE YOUR BUSINESS

Newly refurbished, fully fitted opportunity.

12 Harcourt Street has been comprehensively remodelled throughout, providing up to 13,000 sq ft of office space arranged over five floors.

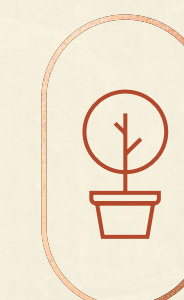
The building has excellent ESG credentials and is available to let as an entire building or on a floor-by-floor basis.



Comprehensively
refurbished



Reimagined
fully fitted workspace



Large
private terrace



Self-contained
or floor-by-floor



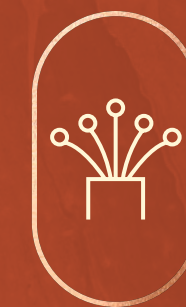
01



Refurbished
manned reception



Bookable
boardroom



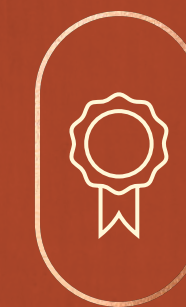
Fibre
connectivity



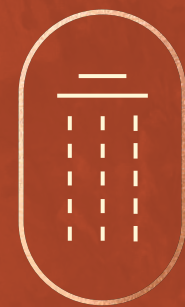
New LED
lighting throughout



24 hour
access



BREEAM In-Use
'Excellent'



New shower &
changing facilities



Bicycle storage
& lockers



New
air conditioning



Passenger
lift



Excellent
natural light



EPC B
rating

THE COMPLETE PACKAGE

The building features new end-of-trip facilities, as well as a contemporary reception and refined finishes and furnishings throughout.

The garden floor has a 14-person bookable boardroom, as well as new shower facilities, a drying room and bicycle storage.



02



03

- 01. Third floor – office
- 02. Third floor – meeting room
- 03. Building exterior



CAREFULLY CONSIDERED WORKSPACE



Second floor office



- 01. Third floor
– breakout area
- 02. Third floor
– meeting rooms
- 03. First floor
– breakout area
- 04. Ground floor
– private office



ELEGANT SPACES

The space is complete with agile working areas, comfortable meeting rooms, private offices, and spacious breakout areas to relax and recharge.

The entire building benefits from a high quality fit out, ready for an occupier to get straight to work.





ACCOMMODATION

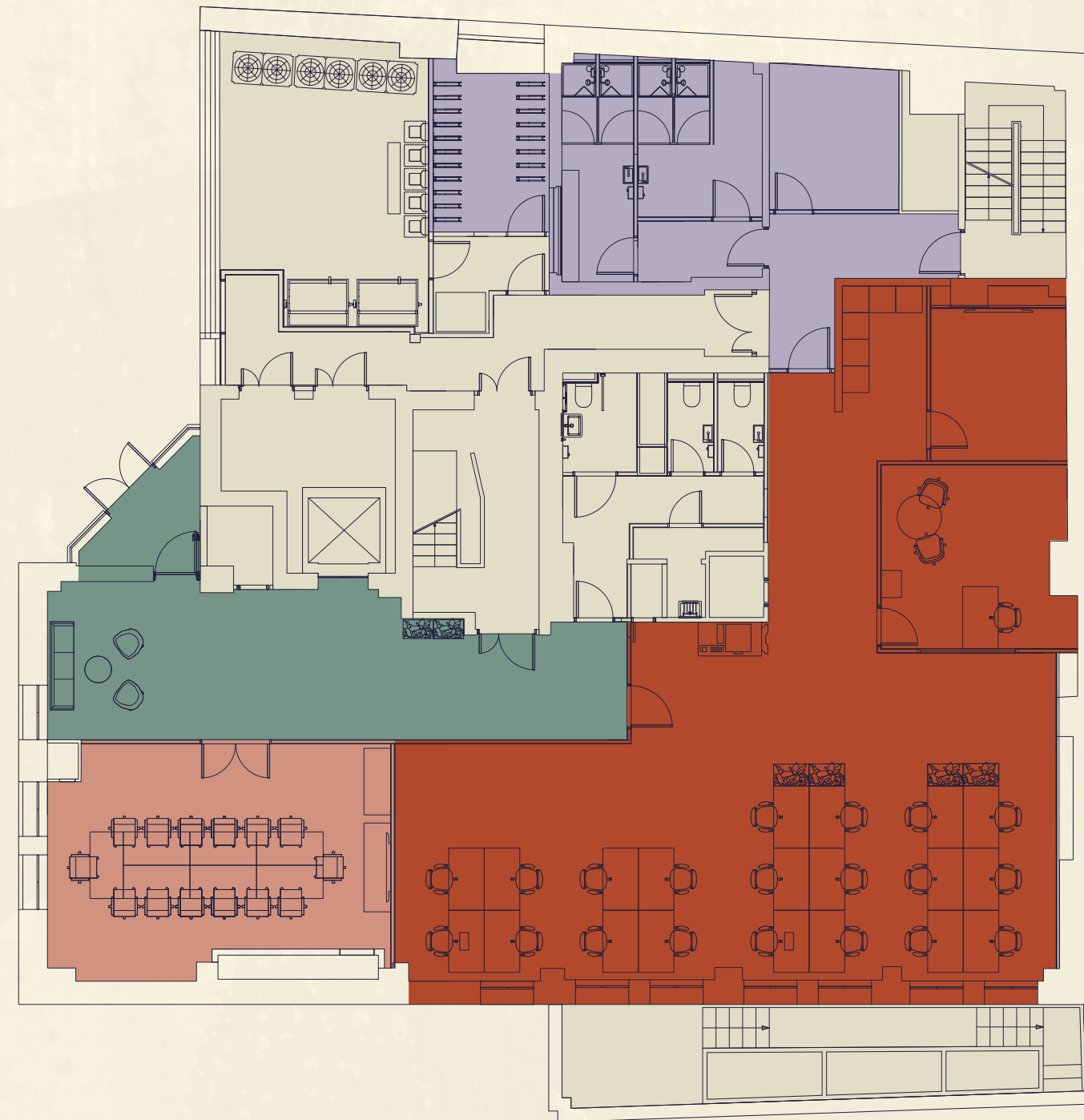
Floor	Use	Sq Ft	Sq M
Third	Office	2,159	200.6
Second	Office	2,440	226.7
First	Office	3,147	292.4
Ground	Office	2,284	212.2
	Reception	609	56.6
Garden	Office	2,142	199.0
	Boardroom	428	39.8
Total Office		13,223	1,228.5

● Office
 ● Meeting Room
 ● Reception
 ● Communal lobby & boardroom
 ● End-of-journey facilities
 ● Terrace
 ● Core
 Floorplans not to scale. Indicative only.



GARDEN FLOOR 2,584 SQ FT / 240.1 SQ M

Workstations	12	Showers	04	14 person communal boardroom	01
Private offices	02	Bicycle racks	10	Teapoint	01
10 person boardroom	01	Communal lobby	01		



HARCOURT STREET

GROUND FLOOR 2,284 SQ FT / 212.2 SQ M

Workstations	10	Reception area	01	Teapoint / breakout area	01
Private offices	05	Terrace	01		



HARCOURT STREET

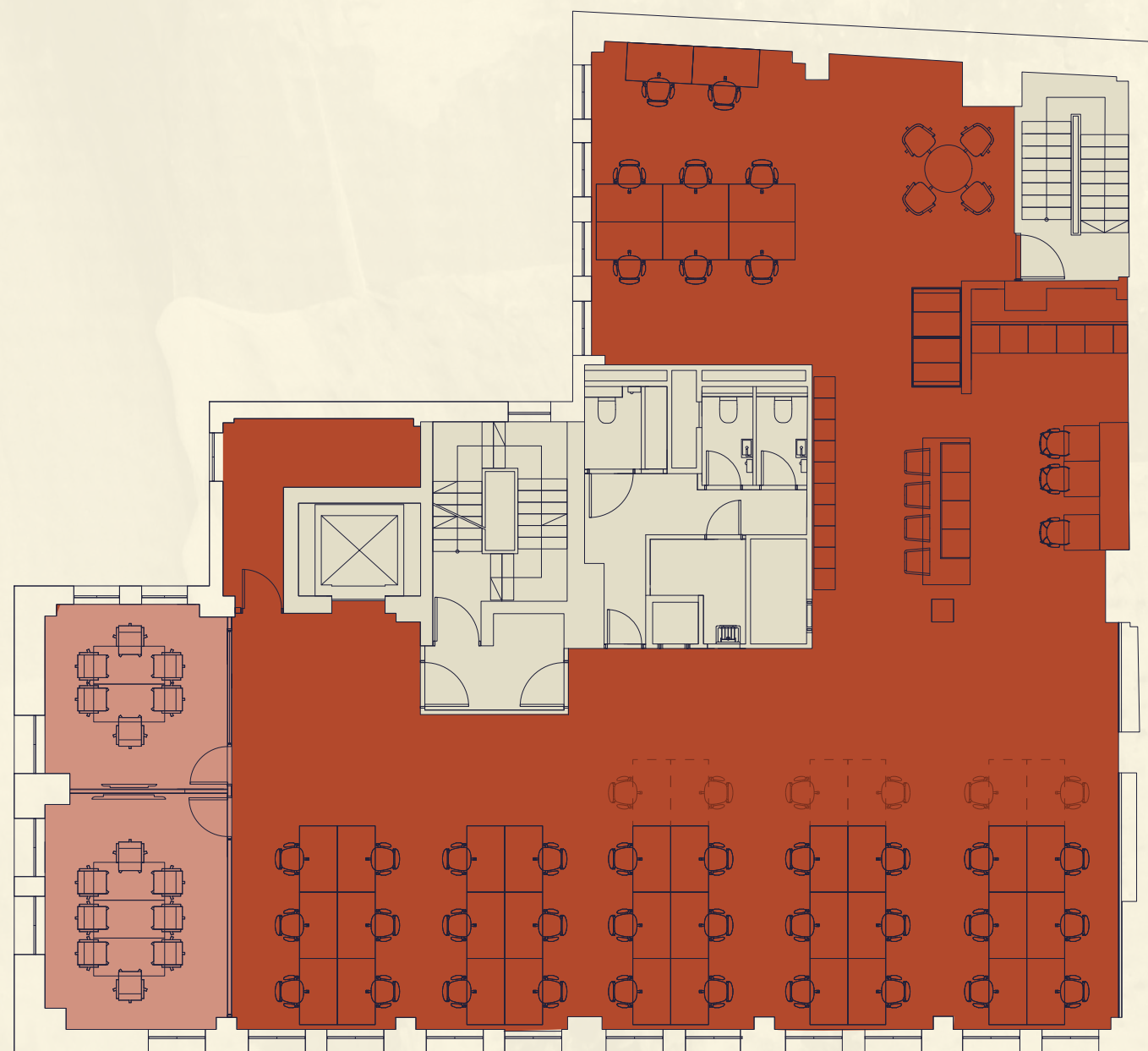


Office Terrace Core Additional desk positions

Floorplans not to scale. Indicative only.

FIRST FLOOR 3,147 SQ FT / 292.4 SQ M

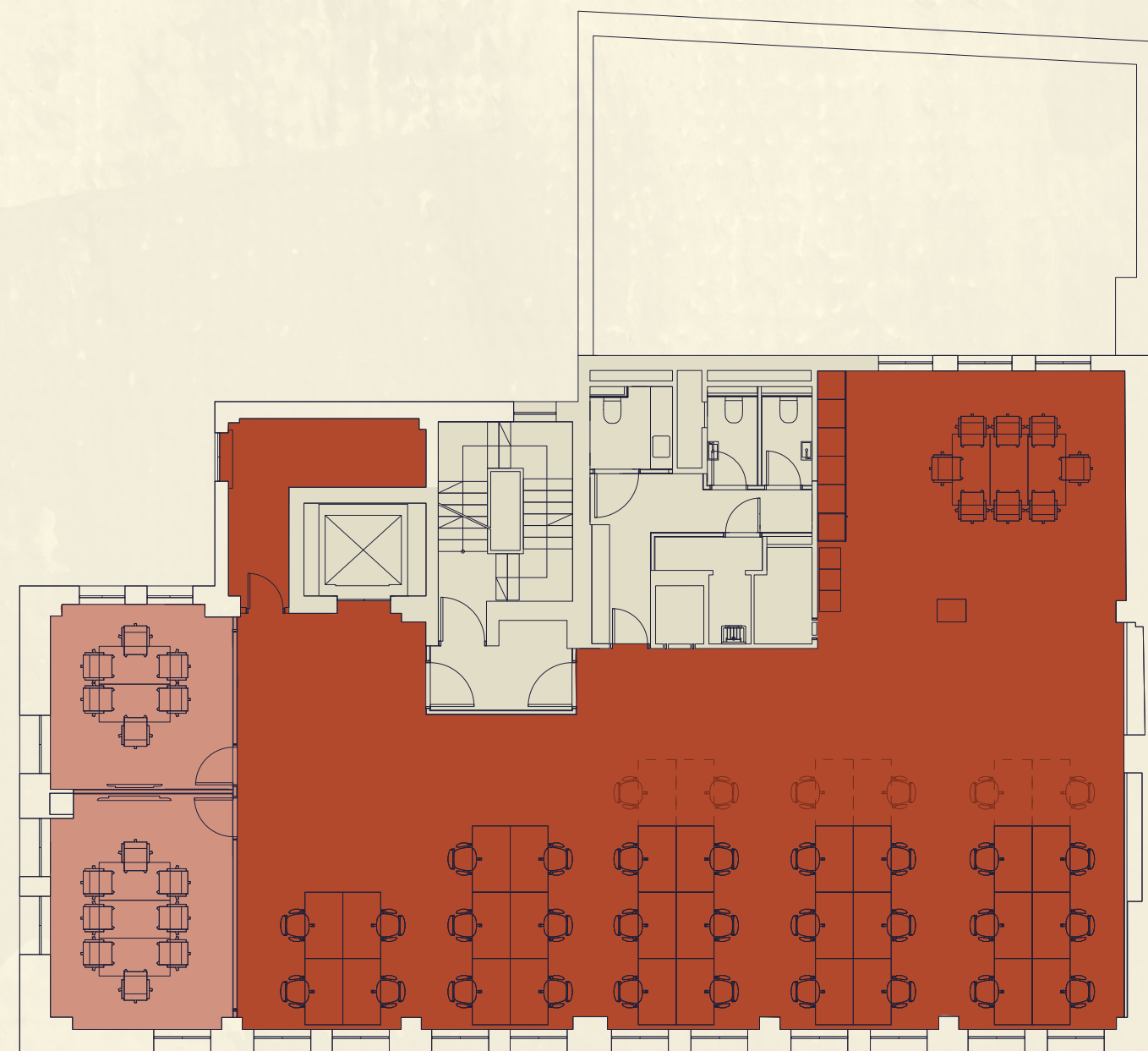
Workstations	44	6 person meeting room	01	Teapoint / breakout area	01
Zoom booths	02	8 person meeting room	01		



HARCOURT STREET

SECOND FLOOR 2,440 SQ FT / 226.7 SQ M

Workstations	28	6 person meeting room	01	Teapoint / breakout area	01
		8 person meeting room	01		



HARCOURT STREET

THIRD FLOOR 2,159 SQ FT / 200.6 SQ M

Workstations	28	4 person meeting room	01	Teapoint / breakout area	01
		6 person meeting room	01		



HARCOURT STREET



- 01. The Marylebone Corner
- 02. The Ivy
- 03. Duke of Wellington
- 04. The Larrik
- 05. Paddington Basin



THE BEST OF BOTH WORLDS

12 Harcourt Street is nestled between Marylebone and Paddington.

Step out of the office and explore Marylebone – known for its chic boutiques, gourmet dining, and tranquil green spaces.

Take a walk in the serene Regent’s Park, or explore the waterside amenities around Paddington Basin.





CONNECTED NEAR & FAR

The building benefits from excellent travel connections with Elizabeth Line, National Rail and Underground services nearby.

12 Harcourt Street is just a few minutes walk from Edgware Road Station, with Paddington and Marylebone stations also within easy reach.



12 HARCOURT STREET – THE LOCATION



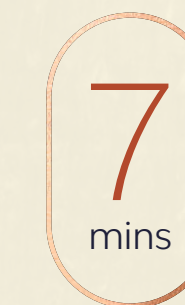
CONNECTIVITY



Edgware Road



Marylebone



Baker Street



Paddington



Restaurants

1. L'Angolo Bianco
2. The Ivy
3. Clarette
4. Granger & Co.
5. Carlotta
6. Boxcar Bar & Grill
7. Twist Connubio
8. Chiltern Street Deli

Bars / Cafés

9. The Marylebone Corner
10. The Larrik
11. The Duke of Wellington
12. Boxcar Baker & Deli
13. Brewdog
14. Lockhouse
15. Pret A Manger
16. Social Impact Coffee

Leisure / Hotels

17. Lisson Gallery
18. The Landmark Hotel
19. Hilton
20. Park Grand Mayfair
21. Montagu Place Hotel
22. BXR Marylebone
23. PureGym
24. Fitness First



FURTHER INFORMATION

Terms

Upon application.

Freehold can also be made available.

Viewings

Strictly through the joint sole letting agents:

CONTACTS



Brian Allen

bmallen@savills.co.uk

07972 000 215

Nikki Stoughton-Harris

nikki.stoughtonharris@savills.co.uk

07815 032 103

KAUFFMANS

Jeremy Prosser

jeremy@kauffmans.co.uk

07931 593 163

Anne Housden

anne@kauffmans.co.uk

07775 874 480

Misrepresentation Act 1967: Savills and Kauffmans for themselves and for the vendor(s) or lessor(s) of this property whose agents they are, give notice that: 1. These particulars do not constitute, nor constitute any part of, an offer or contract. 2. None of the statements contained in these particulars as to the property are to be relied on as statements or representations of fact. 3. Any intending purchaser or lessee must satisfy himself by inspection or otherwise as to the correctness of each of the statements contained in these particulars. 4. The vendor(s) or lessor(s) do not make or give and neither Savills, Kauffmans nor any person in their employment has any authority to make or give, any representation or warranty whatever in relation to this property. Finance Act 2013: Unless otherwise stated all prices and rents are quote exclusive of VAT. The Business Protection from Misleading Marketing Regulations 2008: These details are believed to be correct at the time of compilation but may be subject to subsequent amendment. April 2025.

Designed & Produced by cre8te - 020 3468 5760 - cre8te.london