



## The Workers League

6-8 Bonhill Street, Shoreditch, EC2A 4BX

**Serviced Offices To Let on Flexible Terms. Located in Central Shoreditch.**

**6 to 12 Desks**

- 6-12 Person Offices
- Private and Co Working Space
- Flexible Terms
- Central Shoreditch Location
- Available Now

# The Workers League, 6-8 Bonhill Street, Shoreditch, EC2A 4BX

## Summary

<b>Available Size</b>	6 to 12 Desks
<b>Rent</b>	£36,000 - £72,000 per annum
<b>Business Rates</b>	N/A
<b>Service Charge</b>	N/A
<b>Car Parking</b>	N/A
<b>VAT</b>	Applicable
<b>Legal Fees</b>	Each party to bear their own costs
<b>Estate Charge</b>	N/A
<b>EPC Rating</b>	D (85)

## Description

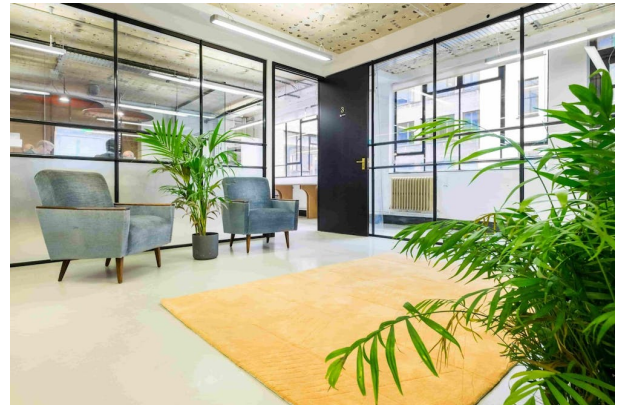
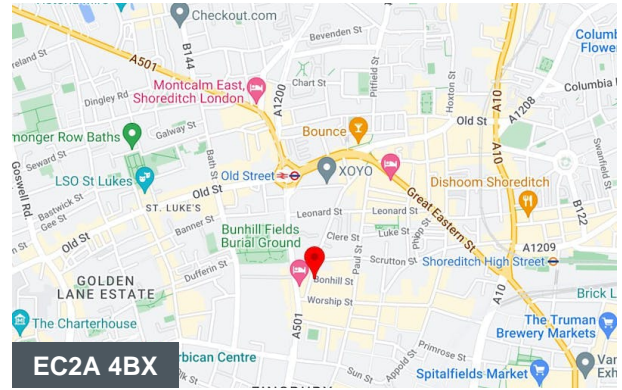
Bright and spacious, private offices in a coworking environment, with regular events and networking opportunities designed to nurture your business.

Located next door to Google Campus, the space is extremely well appointed with fast wireless, large meeting spaces, lots of break out areas including chill out room, showers & a garden with barbecue for the warmer days!

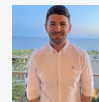
There are also a number of desks in a co-working office available on flexible contracts.

## Accommodation

Name	Rent	Service Charge	Availability
Unit - 6 Person	£36,000 per annum	n/a	Available
Unit - 10 Person	£60,000 per annum	n/a	Available
Unit - 12 Person	£72,000 per annum	n/a	Available



## Viewing & Further Information



**Jack Lyons**

020 7613 4044 | 07794 202 220

Jack@fyfemcdade.com