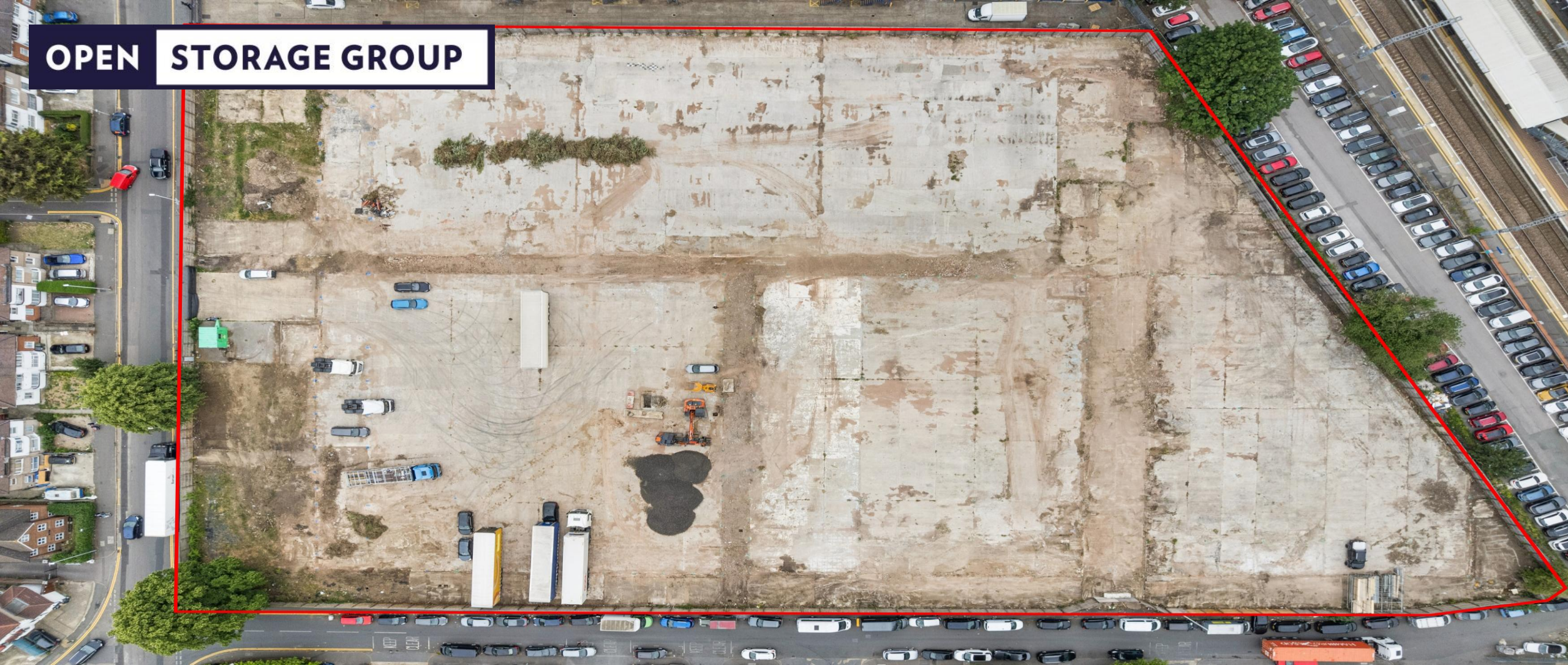


# OPEN STORAGE GROUP



Nestle Business Park LTD, 233 - 236 Nestle Avenue, Hayes, UB3 4SH

Call +44 (0) 20 8051 4883 | Email [info@openstoragegroup.co.uk](mailto:info@openstoragegroup.co.uk) | Web [openstoragegroup.co.uk](http://openstoragegroup.co.uk)

# OPEN STORAGE GROUP

Nestle Business Park LTD, 233 - 236 Nestle Avenue, Hayes, UB3 4SH

Secure open storage space from 10,000 sq ft available on Nestlé Avenue, Hayes, offering a flexible and well-connected outdoor storage solution in one of West London's premier commercial locations. With concrete grounding, this unit is ideal for contractors, fleet operators, equipment storage and a variety of business uses.

Nestle business park occupies a highly accessible position approximately 2 miles north of Heathrow Airport and within close proximity to the M4, M25 and A40, providing direct access to Central London, the Thames Valley and the wider national motorway network.

**Price | POA**

---

**Vacant**

---

**Electric and Water supply**

---

**Secure gated development**

---

