



Units 4 & 10

Turnham Green Terrace Mews, Chiswick, W4 1QU

**Impressive self-contained
mews office building to let**

**2 minute walk from
Turnham Green tube station**

1,311 sq ft
(121.80 sq m)

- Fully serviced office
- Board room, digital/video meeting room, lounge & informal work space, open plan office
- Dedicated BT 200Mbps leased line
- Herman Miller chairs and bespoke desks
- Accessible access and bathroom/shower

Units 4 & 10, Turnham Green Terrace Mews, Chiswick, W4 1QU

Summary

Available Size	1,311 sq ft
Rent	£37.50 per sq ft
Price	Offers in excess of £600,000 £458 psf
Rateable Value	£29,000 2026 RV
Service Charge	N/A
Car Parking	N/A
VAT	Applicable
Legal Fees	Each party to bear their own costs
Estate Charge	N/A
EPC Rating	B (48)

Accommodation

The accommodation comprises the following areas:

Name	sq ft	sq m	Availability
Ground	501	46.54	Available
1st	441	40.97	Available
2nd	369	34.28	Available
Total	1,311	121.79	

Description

Striking the perfect balance between function, style and wellbeing this quiet, modern and light-filled serviced office, arranged over 3 floors, is set within a peaceful pedestrian only mews, offering open plan office space, meeting rooms, comfortable lounge and a dedicated 'phone booth' for the ultimate quiet space.

Location

Set within a car-free tranquil landscaped mews where bench seating is nestled amongst olive trees and the local coffee bar is a 20 second walk away. The mews is accessed from Turnham Green Terrace which offers a variety of independent businesses including brasseries, gift shops and restaurants.

Nearby, on Chiswick High Road High Road House (Soho House Group) and La Tompette (Michelin starred) can be found, along with M&S and other high street stores and local shops and services.

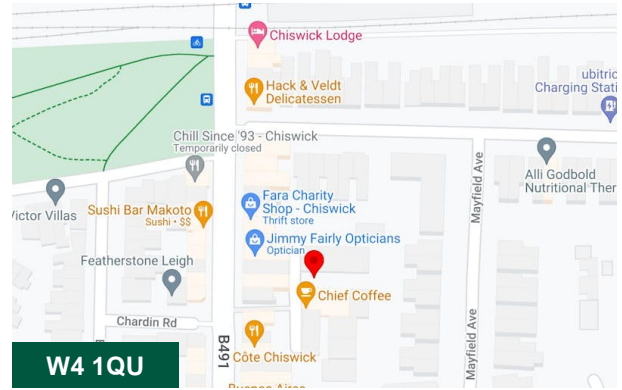
Turnham Green tube station and its easy connections to central London and Heathrow is a 2 minute walk. Parks, tennis courts and five a side football pitches are all within a few minutes

Terms

Available on a new FR&I lease outside the Landlord & Tenant Act 1954 on terms to be agreed.

Viewings

Strictly by arrangement with Whitman & Co Commercial.



Viewing & Further Information



Jeremy Day FRICS

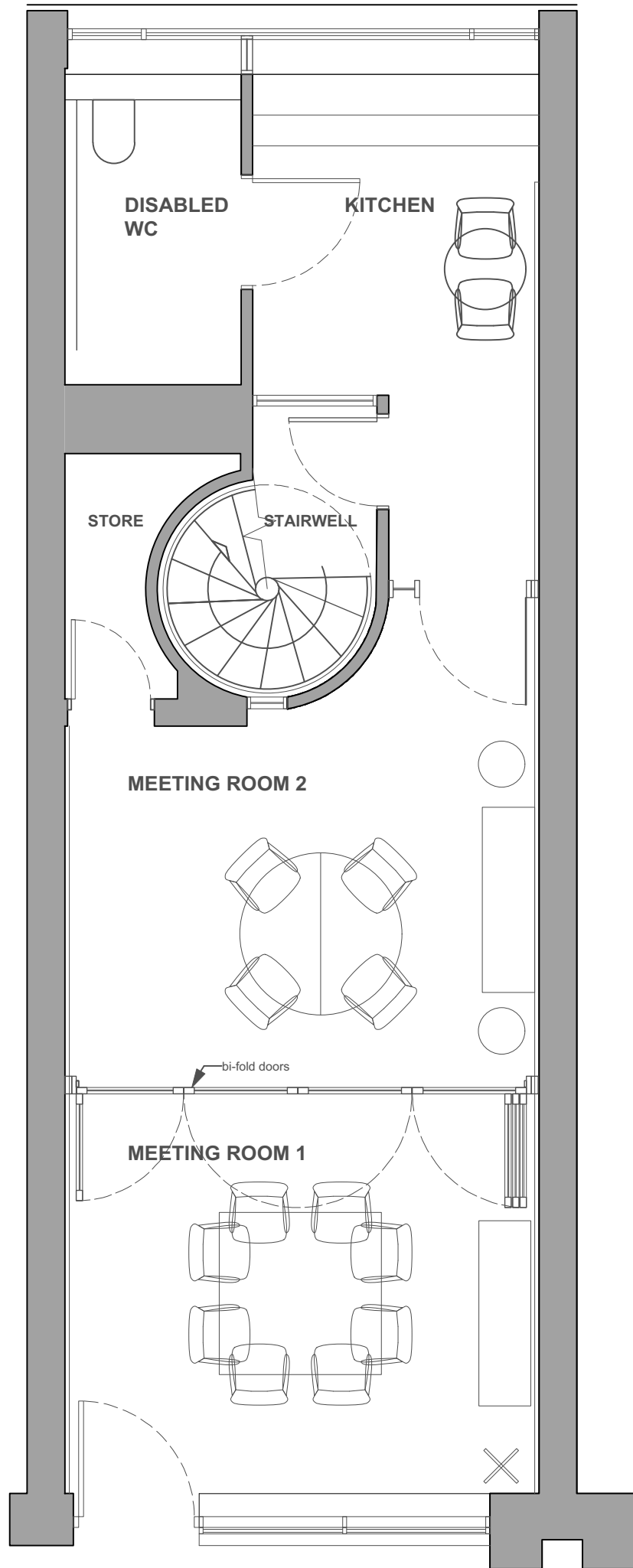
020 8747 8800 | 07966 810030

jd@whitmanandco.com

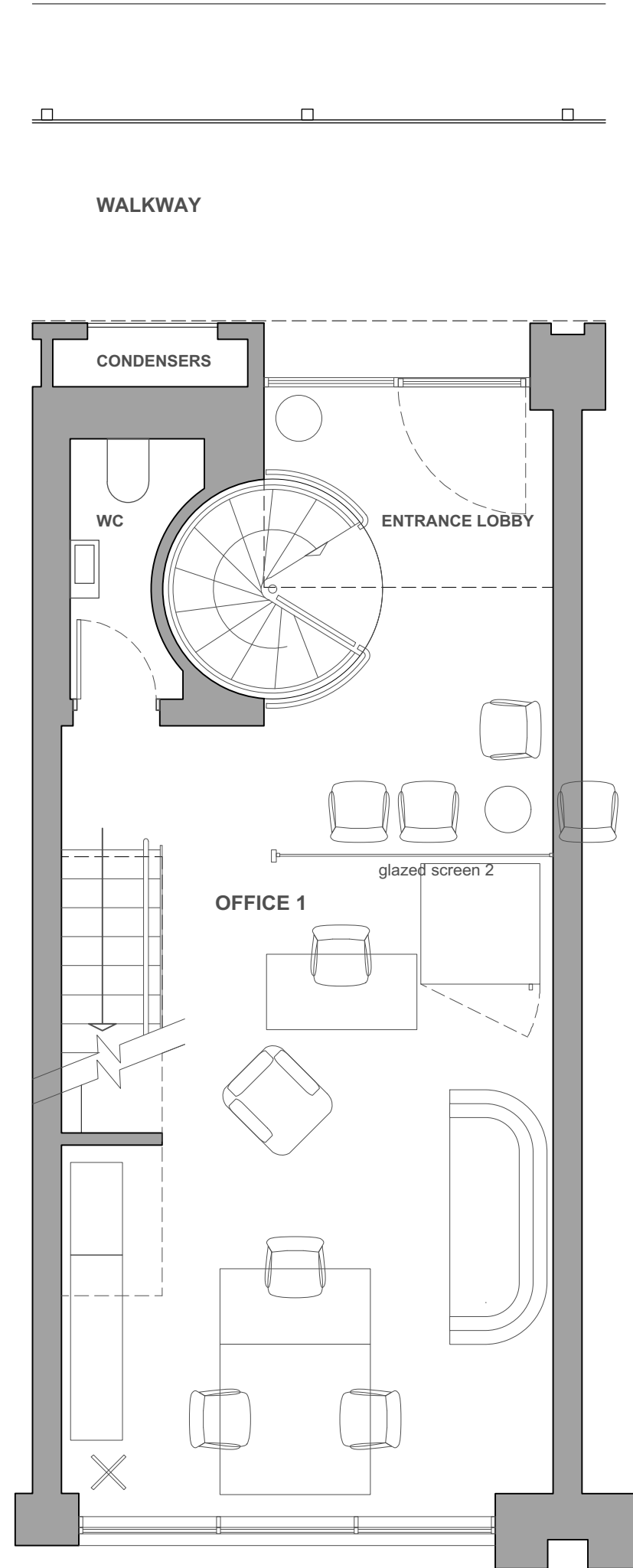




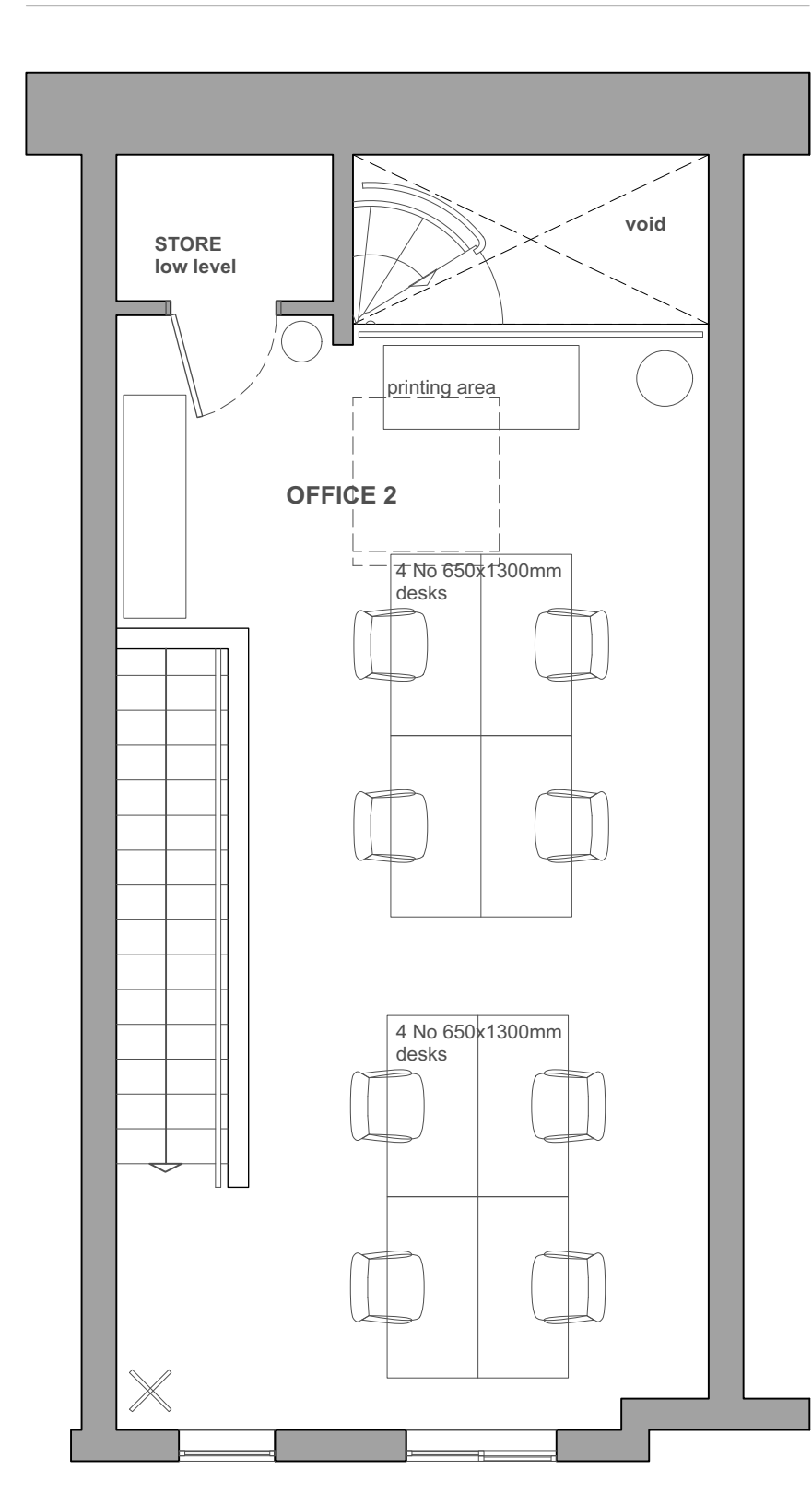
**Units 4 & 10 Turnham Green Terrace Mews
Chiswick London W4 1QU**



**GROUND FLOOR PLAN
UNIT 4**



**FIRST FLOOR PLAN
UNIT 10**



**MEZZANINE FLOOR PLAN
UNIT 10**