

103 MOUNT STREET

LONDON, W1K 2TJ



Sanderson
Weatherall

TO LET

4,158 sq ft
£175 per sq ft



DESCRIPTION

The striking building offers contemporary, fully fitted high-quality office space. The accommodation is flooded with natural light and overlooks the picturesque Mount Street Gardens.

KEY FEATURES

- Manned reception
- Fully fitted
- Air conditioning
- Views across Mount Street Gardens
- Showers & bicycle facilities



103 MOUNT STREET

LOCATION

4,158 sq ft
£175 per sq ft

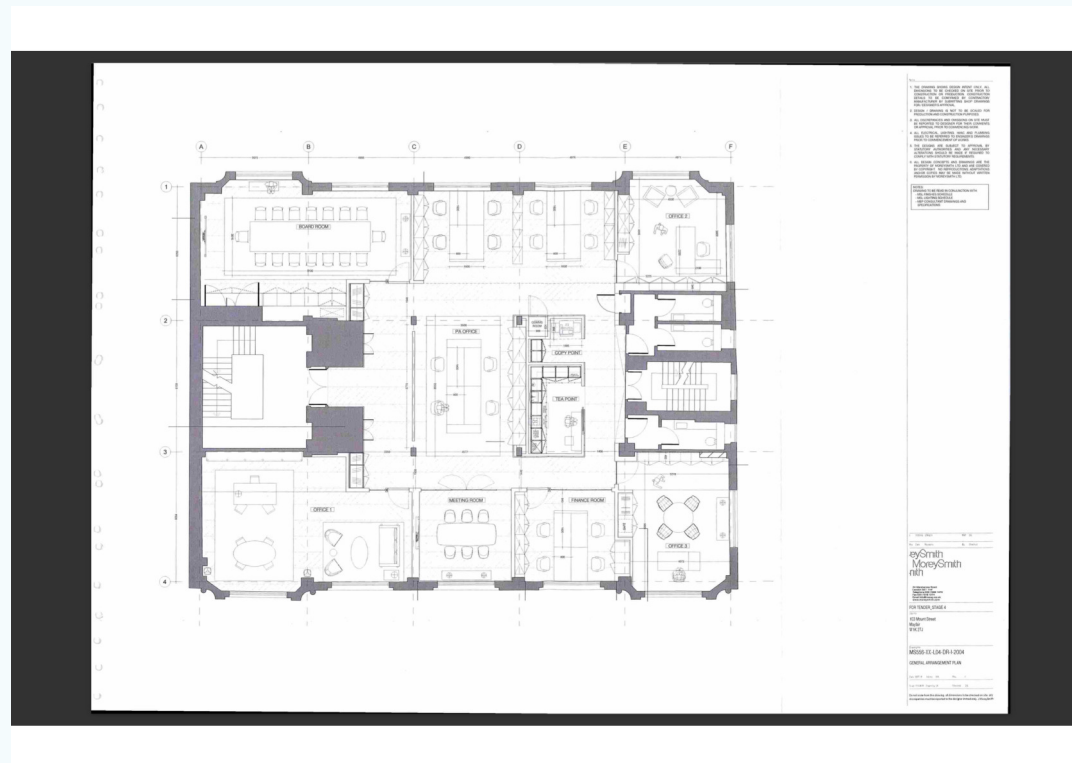


Mount Street is a quintessentially Mayfair destination. This exclusive street is home to a bespoke world of fashion, dining, art and culture, with tranquil, beautiful green spaces on your doorstep.

The prestigious Mayfair destination benefits from some of the most esteemed retail, restaurant, bar and hotel offerings in the world. There are excellent connectivity links with Green Park and Bond Street underground stations within walking distance.

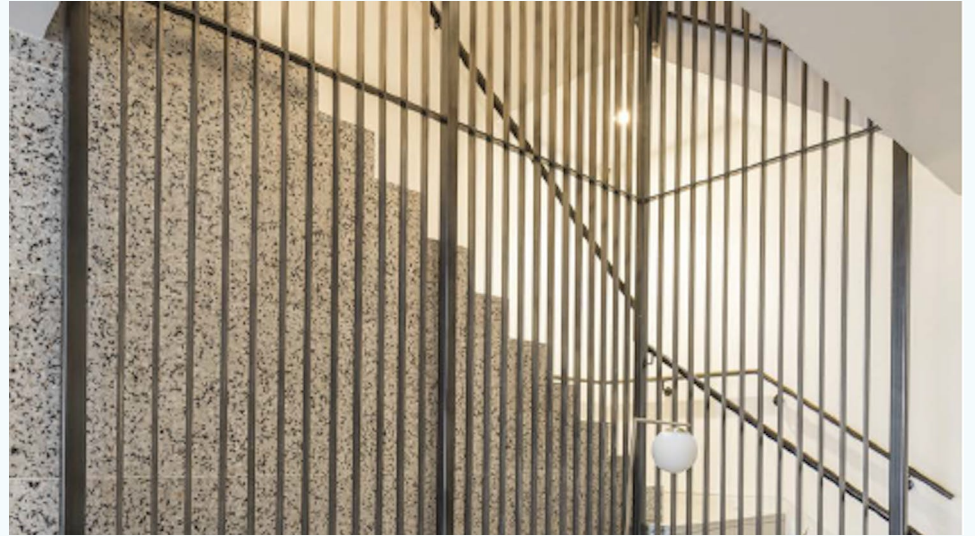
4TH FLOOR PLAN 103 MOUNT ST...

4,158 sq ft
£175 per sq ft



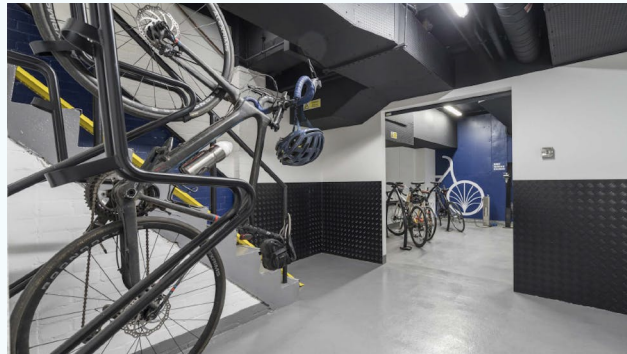
GALLERY

4,158 sq ft
£175 per sq ft



GALLERY

4,158 sq ft
£175 per sq ft



ACCOMMODATION

4,158 sq ft
£175 per sq ft



Name	sq ft	sq m	Availability
4th	4,158	386.29	Available
Total	4,158	386.29	

MORE DETAILS

4,158 sq ft
£175 per sq ft



RENT

£175 per sq ft

BUSINESS RATES

Rateable Value: £330,000
Rates Payable: £43.33 per sq ft

AVAILABILITY

Available Immediately

SERVICE CHARGE

£18.98 per sq ft

EPC

B

LEASE

New Lease

TERMS

A new lease is available for a term by arrangement.

ADDITIONAL INFORMATION

- [View Website](#)



STUART FRICKER
02076291088 | 07775702370
stuart.fricker@sw.co.uk



ROSS BLANCHFLOWER
020 7629 1088 | 07734 365 141
ross.blanchflower@sw.co.uk

For further information or to arrange a viewing please contact



Sanderson
Weatherall

0800 122 3050

enquiries@sw.co.uk



103

—

MOUNT STREET

MAYFAIR W1

4,158 sq ft of Fully Fitted and Furnished Workspace



CLASSIC MAYFAIR

This impressive building features a bright and spacious 4th floor office, offering 4,158 sq ft of new, fully fitted and furnished workspace. Overlooking both the serene Mount Street Gardens and Mount Street, the office benefits from a refurbished, manned reception, while the building itself boasts outstanding amenities and exceptional end of trip facilities.



Building reception



Bespoke height adjustable desking with industry leading ergonomic task chairs



HIGHLIGHTS



Fully refurbished
manned reception



Furnished client
waiting area



2x new automatic
passenger lifts



Fully fitted



Shower rooms with
towel service and lockers



Air-conditioning



Cycle storage facilities



High quality furnishing



EPC B - 40



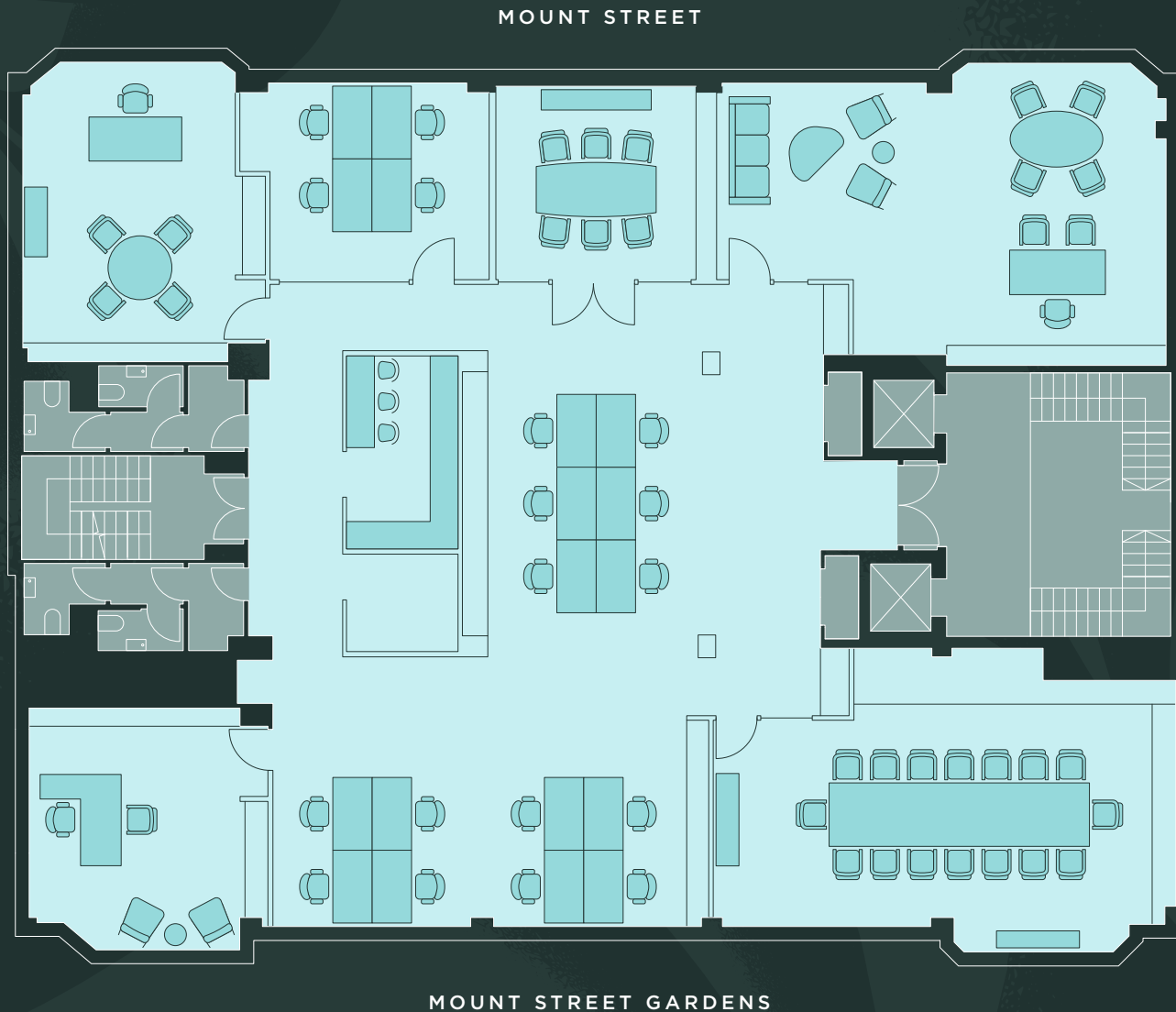


Executive office suite designed with high-end luxury tailored furnishings

4TH FLOOR

4,158 sq ft
(386.3 sq m)

- 16x Person Boardroom
- 6x Person Meeting Room
- Executive Chairperson Suite
- 2x Private Offices
- 18x Workstations
- Fully Fitted Kitchen

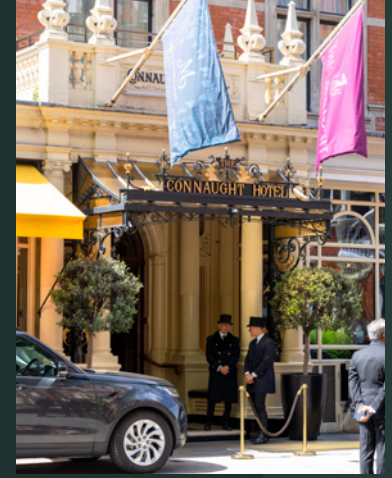




Conference table with 16x mid-back executive meeting chairs



EXCLUSIVE MAYFAIR



Mount Street embodies the character of Mayfair, this exclusive street is home to world-class fashion, fine dining, and renowned art, all set against a backdrop of elegant green spaces. A prestigious destination, it boasts some of the most esteemed retail, restaurant, bar, and hotel offerings in the world. With Green Park and Bond Street underground stations just a short walk away, it also benefits from excellent connectivity.

RESTAURANTS

- | | | | |
|---|------------|----|----------------|
| 1 | Mercato | 8 | Cipriani |
| 2 | NAC | 9 | Jamavar |
| 3 | Lucky Cat | 10 | Kai |
| 4 | Ikedo | 11 | Sparrow Italia |
| 5 | 34 Mayfair | 12 | Delfino |
| 6 | Scott's | 13 | MiMi Mei Fair |
| 7 | KOYN | 14 | BiBi |

HOTELS

- 1 Native
- 2 The Twenty Two
- 3 The Beaumont
- 4 London Marriott
- 5 Claridge's
- 6 The Biltmore
- 7 The Connaught
- 8 The Dorchester
- 9 The Grosvenor House
- 10 Chancery Rosewood

BARS

- 1 The Pine Bar
- 2 The Punch Bowl
- 3 The Coach & Horses
- 4 Guinea Grill
- 5 The Audley
- 6 The Footman
- 7 The Barley Mow

CAFÉS

- 1 Marchesi
- 2 LALÍ
- 3 ARC Le Salon
- 4 Hideaway

MEMBERS CLUBS

- 1 George
- 2 Annabel's
- 3 Harry's Bar



103

—

MOUNT STREET

MAYFAIR W1

SW

Sanderson
Weatherall

allsop

STUART FRICKER

07775 702 370

stuart.fricke@sw.co.uk

ROSS BLANCHFLOWER

07734 365 141

ross.blanchflower@sw.co.uk

HARRY THEAKSTON

07500 847 045

harry.theakston@allsop.co.uk

RICHARD TOWNSEND

07787 153 408

richard.townsend@allsop.co.uk

Misrepresentation Act: 1. Sanderson Weatherall on its own behalf and on behalf of the vendor/lessor of this property whose agent Sanderson Weatherall is, gives notice that: (a) these particulars do not constitute in whole or in part an offer or contract for sale or lease; (b) none of the statements contained in these particulars as to the property are to be relied on as statements or representations of fact; and (c) the vendor/lessor does not make or give, and Sanderson Weatherall nor any of its members or any person in its employment has any authority to make or give, any representation or warranty whatsoever in relation to the property. The only representations, warranties, undertakings and contractual obligations to be given or undertaken by the vendor/lessor are those contained and expressly referred to in the written contract for sale or agreement for lease between the vendor/lessor and a purchaser or tenant. 2. Prospective purchasers or tenants are strongly advised to: (a) satisfy themselves as to the correctness of each statement contained in these particulars; (b) inspect the property and the neighbouring area; (c) ensure that any items expressed to be included are available and in working order; (d) arrange a full structural (and where appropriate environmental) survey of the property; and (e) carry out all necessary searches and enquiries. May 2025.

