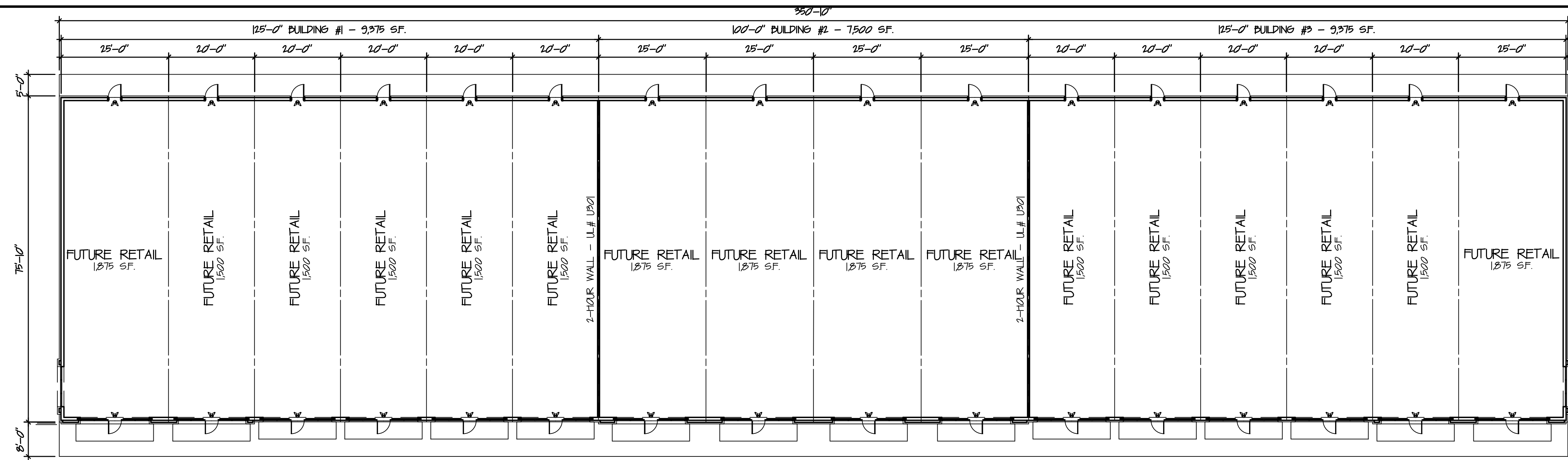
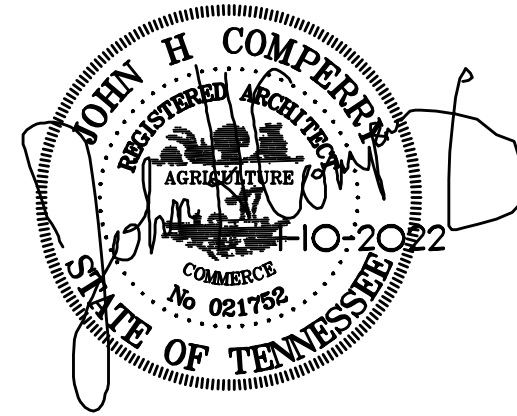
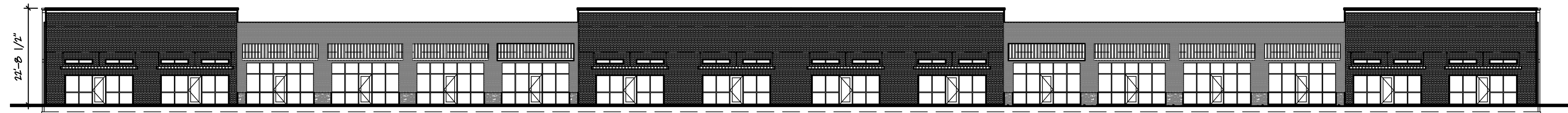


# CODE SUMMARY DATA

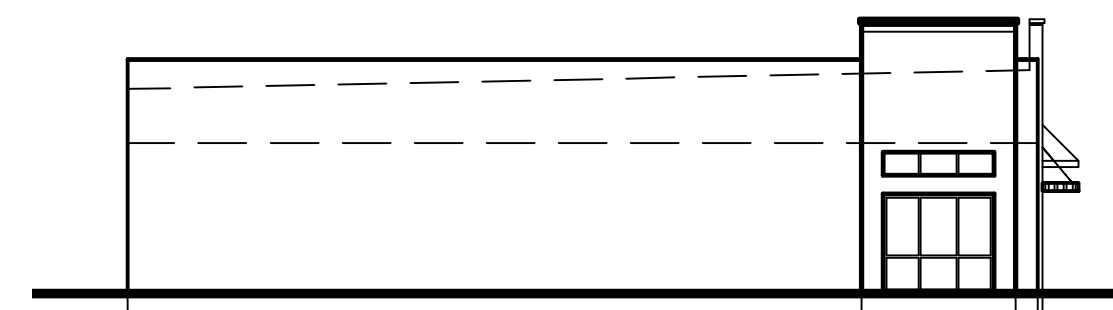
BUILDING CODE(S):	2018 IBC, IFC, IPC, IMC, ECC, & FGC
ACCESSIBILITY CODE:	2009 ICC/ANSI A117.1 ACCESSIBILITY CODE
USE GROUP:	B - "BUSINESS" (SECTION 304.1) M - "MERCANTILE" (SECTION 309.1)
CONSTRUCTION TYPE:	V-A PROTECTED (TABLE 601)
SPRINKLER SYSTEM:	n/a
TWO HOUR RATED FIRE BARRIER:	UL# U301
ALLOWABLE AREA:	28,125 SF (3-STORY w/ 56% FRONTAGE INCREASE)
TOTAL AREA:	25,685 SF (1-STORY)
MAX. ALLOWABLE HEIGHT:	40'-0"
ACTUAL BUILDING HEIGHT:	22'-8" - MAX. ROOF HEIGHT
EXIT ACCESS TRAVEL DISTANCE:	200 FEET, (TABLE 1016.1)
ACTUAL MAX. TRAVEL DISTANCE:	<50 FEET MAX.
OCCUPANT LOAD:	7,200 (@ 150 / GSF) = 48



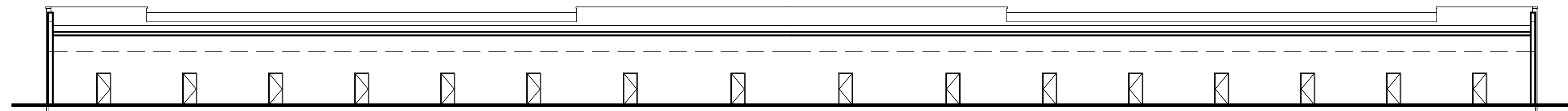
1 FLOOR PLAN  
1/16" = 1'-0" TOTAL AREA: 25,685 SF.



2 FRONT ELEVATION  
1/16" = 1'-0"



4 LEFT ELEVATION  
1/16" = 1'-0" RIGHT ELEVATION SIM.



3 REAR ELEVATION  
1/16" = 1'-0"

REVISIONS	BY

DRAWN	JHC
CHECKED	.
APPROVED	.
JOB NO.	8721
DATE	1-10-2022
SHEET	A101
OF	- SHEETS