

A SENSE OF PLACE

Citylabs is a new biomedical centre in a world-class city, which offers people a great place to work and visit. Manchester has an incredible talent pool of over seven million people, with five leading universities located in the city region and 22 universities within an hour of the centre. Manchester's airport boasts more destinations than London's Heathrow, and the city's Metrolink transport infrastructure is the envy of much of the UK.

Citylabs is at the heart of England's North West, one of the UK's top three biomedical clusters, a global player in the healthcare, biotechnology, pharmaceuticals and science related industries.

The North West's rapidly expanding biomedical sector includes a diverse range of specialist research and development and clinical research facilities, with a strong specialism in translational medicine. With its strong links to the clinical research base The University of Manchester's strength in basic and applied clinical research provides the region with world leading assets in biomedical science. The city is also home to the National Institute for Health Research's Manchester Biomedical Research Centre, the Greater Manchester Comprehensive Local Research Network plus the Christie and Wellcome Trust Clinical Research Facility to name just a few.

England's North West has been recognised as a member of the 'European Super League' of biotech clusters by Strategem and placed in the top 50 in the world by Boston Consulting; Manchester itself representing a significant proportion of the North West's biomedical sector offering.

There are 280 core biomedical companies located in the North West, with 120 from the medical device and healthcare technology sub sector. Significant healthcare, diagnostics, analytics and clinical supply chain investors include; Molnlycke, Baxter, Terumo, Fresenius-Kabi, Depuy, Applied Biosystems, Waters, Shimadzu, Thermo Fisher, ICON and Advanced Medical Solutions.

The North West is the UK's largest producer of pharmaceuticals with seven multinationals located here; Astra Zeneca (their largest global research and development facility), Bristol Myers Squibb, GlaxoSmithKline, Eli Lilly, Novartis, Sanofi-aventis and Teva.

In the years to come, Citylabs will be a landmark investment. Global businesses locating at Citylabs will work to deliver the life-saving treatments of tomorrow and turn research discoveries into products giving a competitive advantage to the UK economy. Answering the big questions about how to tackle diseases like cancer and diabetes, and exploiting the promise of regenerative medicine, needs bold science, skilled people and the facilities to achieve results.

www.Citylabs.co.uk

For more information on available space to let:

Colin Sinclair
Director
Bruntwood

colin.sinclair@bruntwood.co.uk
0161 233 7877

Kelly Chester-Jones
Commercial Property Executive
Manchester Science Parks

kelly.chester-jones@mspl.co.uk
0161 226 1000

The Developers

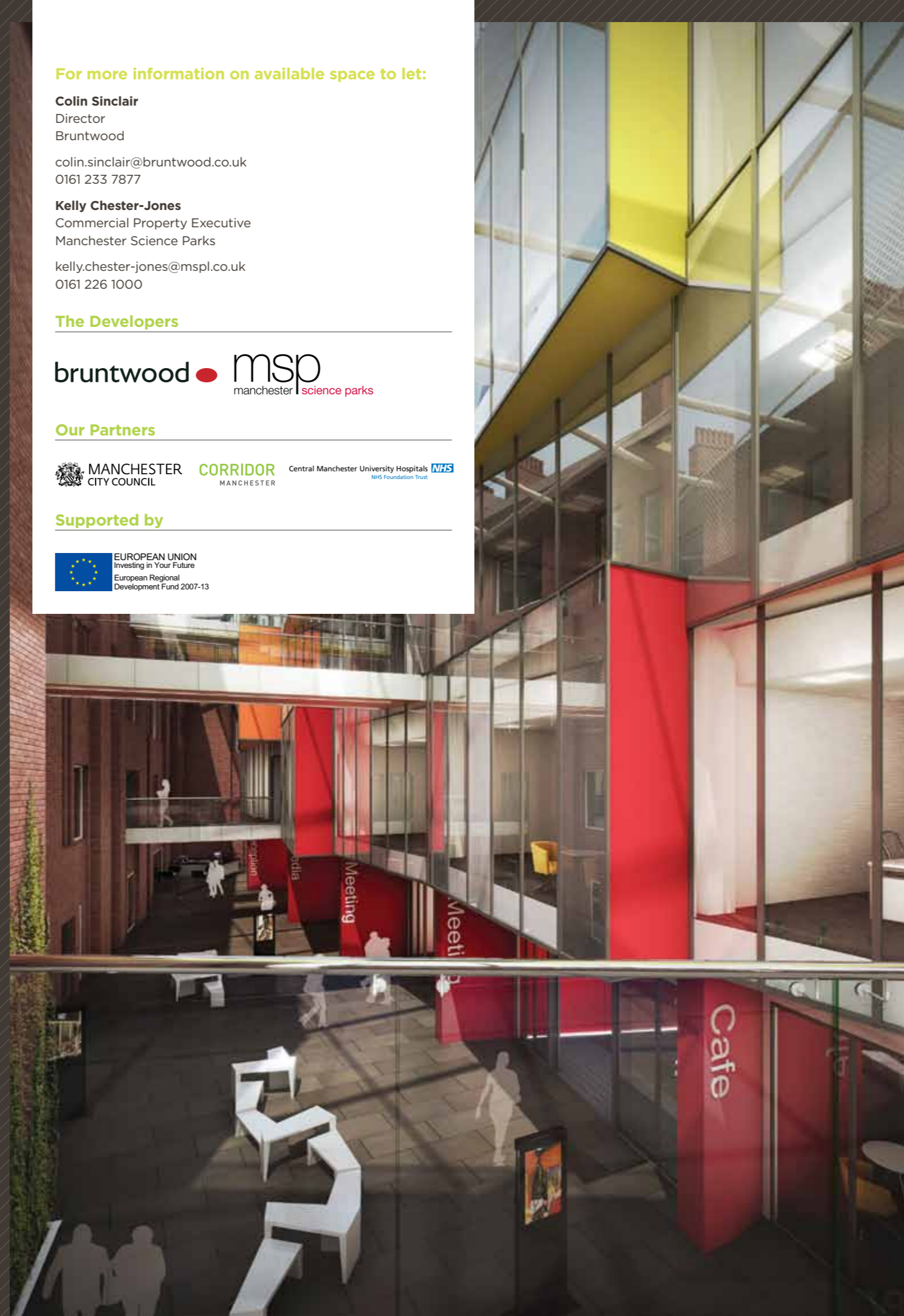
bruntwood **mso**
manchester science parks

Our Partners

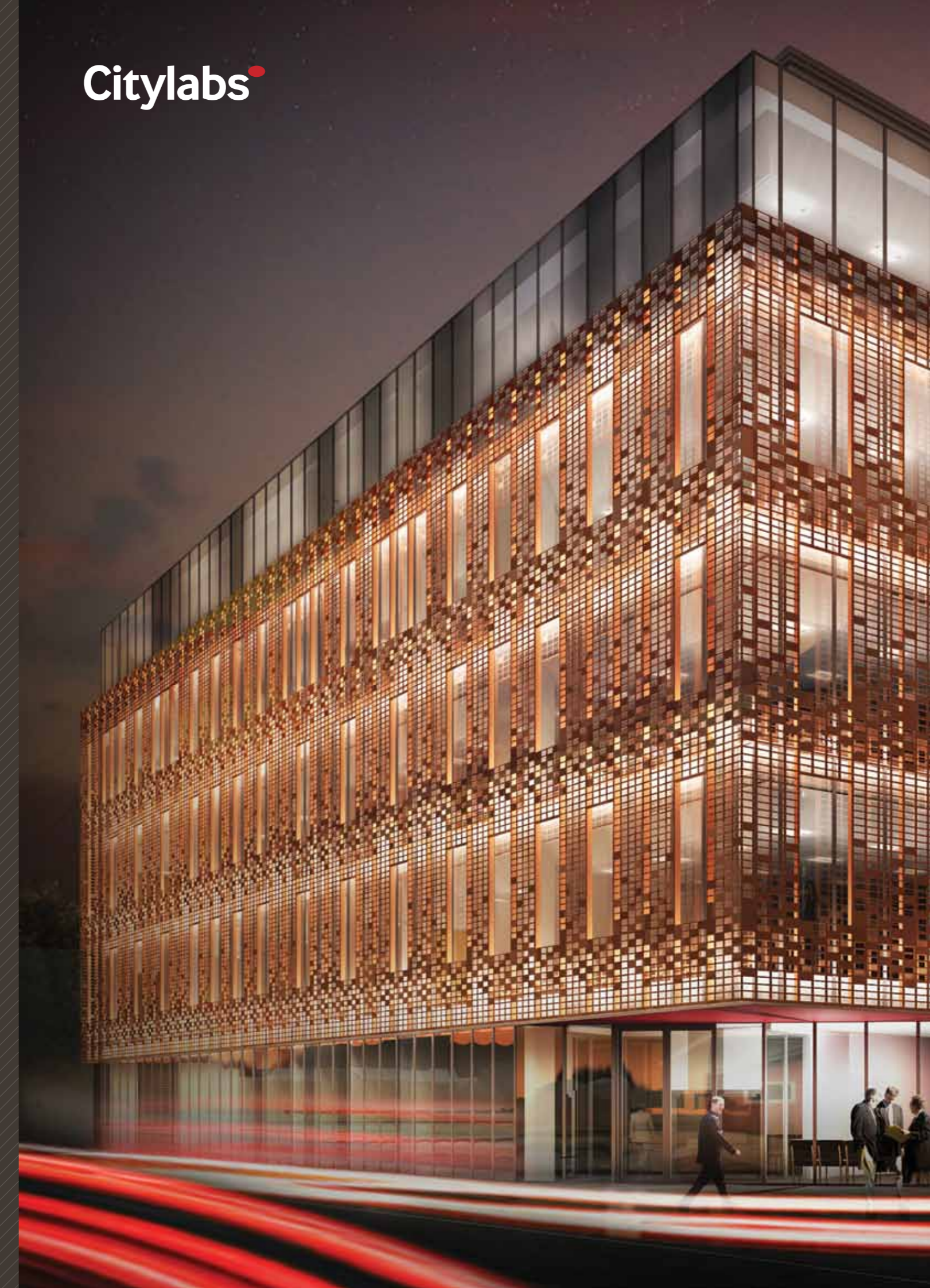
MANCHESTER CITY COUNCIL **CORRIDOR MANCHESTER** Central Manchester University Hospitals NHS Foundation Trust

Supported by

EUROPEAN UNION
Investing in Your Future
European Regional Development Fund 2007-13



Citylabs



Citylabs

Citylabs (formerly the Royal Eye Hospital) is a new 100,000 sq ft biomedical centre of excellence located on Oxford Road at the heart of Europe's largest clinical and academic campus, made up of Central Manchester University Hospitals NHS Foundation Trust, The University of Manchester and Manchester Metropolitan University. The development is a mix of old and new, original and modern, brought together by a beautiful and functional glass atrium.

The atrium, with its impressive south facing entrance and communal areas is at the very heart of the Citylabs development, providing a truly multifunctional space. It will form a new pedestrian thoroughfare linking Oxford Road to Nelson Street and all five of the Central Manchester University Hospitals, and across Grafton Street to the University of Manchester. It will also provide vital networking space for conferences, exhibitions, formal and informal meetings. A vibrant, colourful animated new place at the heart of the Corridor and at the centre of Manchester's increasingly globalised knowledge economy.

An environmentally excellent building, with first class transport links.

WHY CHOOSE CITYLABS?

- Gateway to investment and partners
- Great transport links including Manchester Airport
- Situated at the heart of an existing and mature biomedical cluster
- Networking opportunities within Manchester's bio-medical community
- Access to skilled clinicians, researchers, doctors and nurses
- Local access to safety and ethics group support
- Access to local patients and volunteers for clinical trials
- Sited on Europe's largest clinical campus

MANCHESTER

Manchester city region is recognised by the FT as one of Europe's top ten cities and by IBM as one of the world's Top 50 investment locations. The Manchester Academic Health Science Centre aggregates the research and clinical expertise of the city region, including Europe's largest cancer centre - The Christie Hospital, and the UK's largest single-site paediatric hospital - Royal Manchester Children's Hospital.

The Northwest is the UK's exemplar region for clinical trials. Manchester is at the heart of this region and has a particular focus on the development of medical devices and diagnostics. Recent major investments in the City include US firm Gen-Probe, ICON Development Solutions and Qiagen.

Manchester University's Faculties of Life Sciences, Medical and Human Sciences and Engineering and Physical Sciences' world-class strengths include; tissue repair and wound healing, systems biology, proteomics & genomics, neuroscience, bioinformatics, molecular imaging and oncology. The School of Pharmacy is one of the UK's leading centres for pharmacy research with 95% of its work classed as internationally significant in the 2008 Research Assessment Exercise (RAE).

The neighbouring Manchester Biomedical Research Centre was created by the National Institute for Health Research in 2008 to accelerate scientific breakthroughs, from the laboratory, through clinical trials and into practice across the NHS to improve patient care. The Biomedical Research Centre is a partnership between Central Manchester University Hospitals NHS Foundation Trust and The University of Manchester, and it is a specialist centre of excellence in genetics and developmental medicine.

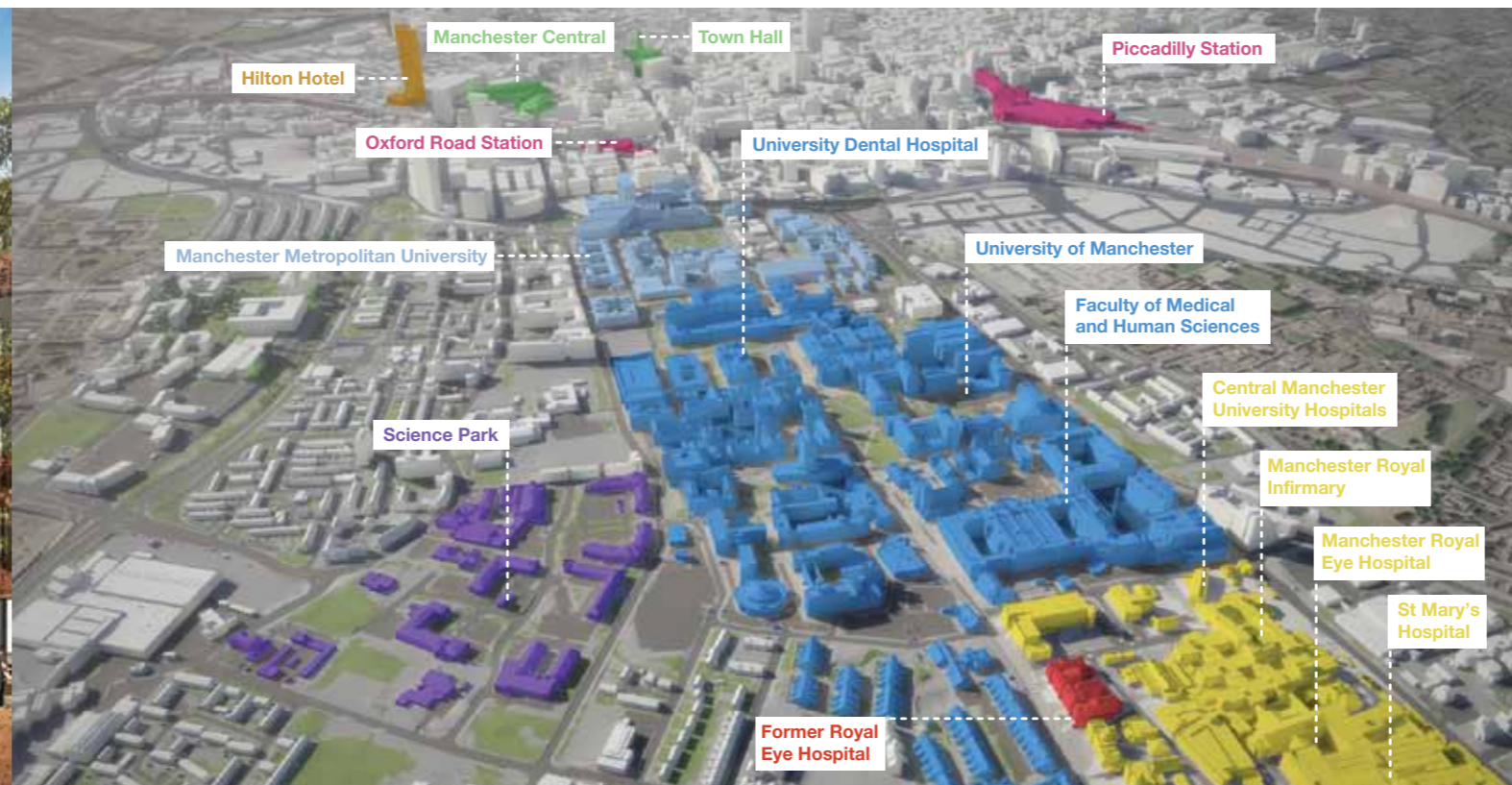
BRUNTWOOD

Established over 30 years ago, Bruntwood are a privately owned property investment, management, regeneration and development company who own and manage a £980m mixed-use portfolio of property including office, retail, leisure and science facilities in over 100 buildings in Manchester, Cheshire, Birmingham, Leeds and Liverpool. Bruntwood have extensive development, commercial and partnership talent and experience.

Bruntwood believe in sustainable cities and each year invest in the life of the cities in which we do business by donating 10% of our profits to arts, charitable, civic and environmental causes.

msp

Founded in 1984, **m**sp now owns and manages 17,000m² on its Corridor site and manages under contract a further 19,000m² on four sites in Manchester and Salford. As well as renting office and specialised accommodation (including data centres and laboratories) to technology based tenants, **m**sp invests a significant proportion of the profit from its property business in soft infrastructure such as specialised business support, networking activities, and facilitating links into the local knowledge base. These 'innovation services' are free of charge to tenant companies, and are designed to accelerate their growth at the same time as reflecting positively on **m**sp's own reputation as the location of choice for technology businesses and, ultimately, delivering a better bottom line.



Citylabs is due for completion in 2013 and will include:

- Wet laboratories
- Specialised research facilities for clinical trials and evaluations
- Hub space to encourage interaction
- Break out areas and meeting rooms
- Teaching facilities for vocational training
- Offices
- Cafe
- A hub for healthcare related research and development

THE CORRIDOR

A partnership of Manchester City Council, the University of Manchester, Manchester Metropolitan University, Bruntwood and Central Manchester University Hospitals NHS Foundation Trust, covering a 234 hectare area from St Peter's Square, adjacent to the Town Hall, along Oxford Road and Princess Parkway towards Manchester Airport to the south of the city centre.