

LDN. SE1.

BAR  
RESTAURANT  
BREWERY  
DISTILLERY  
ROASTERY  
BAKERY

176 -  
178

**BERMONDSEY  
STREET**

**BER-  
MOND-  
SEY**



**STREET**

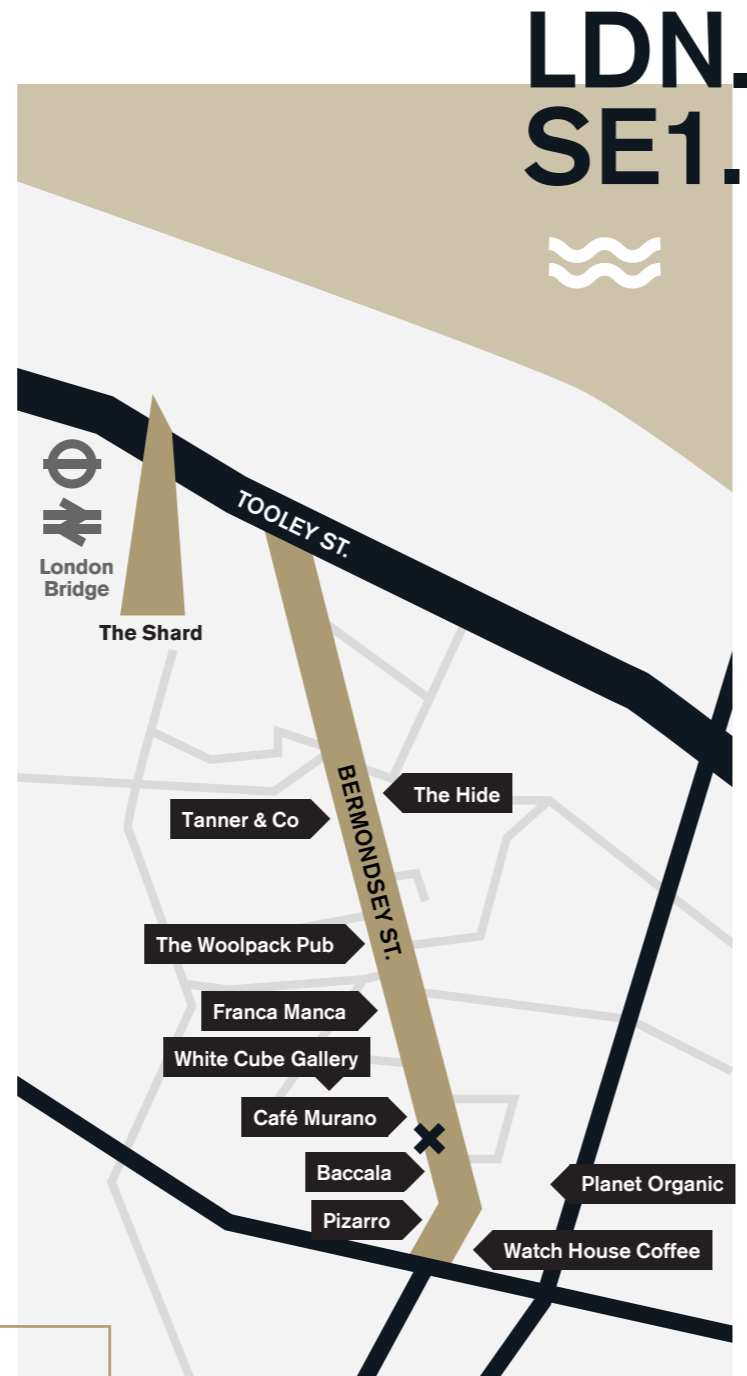
THE PLACE TO BE

# THE PLACE TO BE

Bermondsey Street is hailed as one of London's most sought-after destinations. Just steps away from London Bridge, it captivates people with its residential charm and rich tapestry of thriving fashion, culinary and creative industries.

## STREETS AHEAD

Characterised by an eclectic mix of occupants and lined with beautiful Victorian buildings, the street is steeped in culture. Home to a diverse array of occupants, there's a wealth of restaurants, galleries, cafes, grocers and bars. Turn around the corner and you'll find the thriving Bermondsey, Borough and Maltby Street markets on your doorstep.

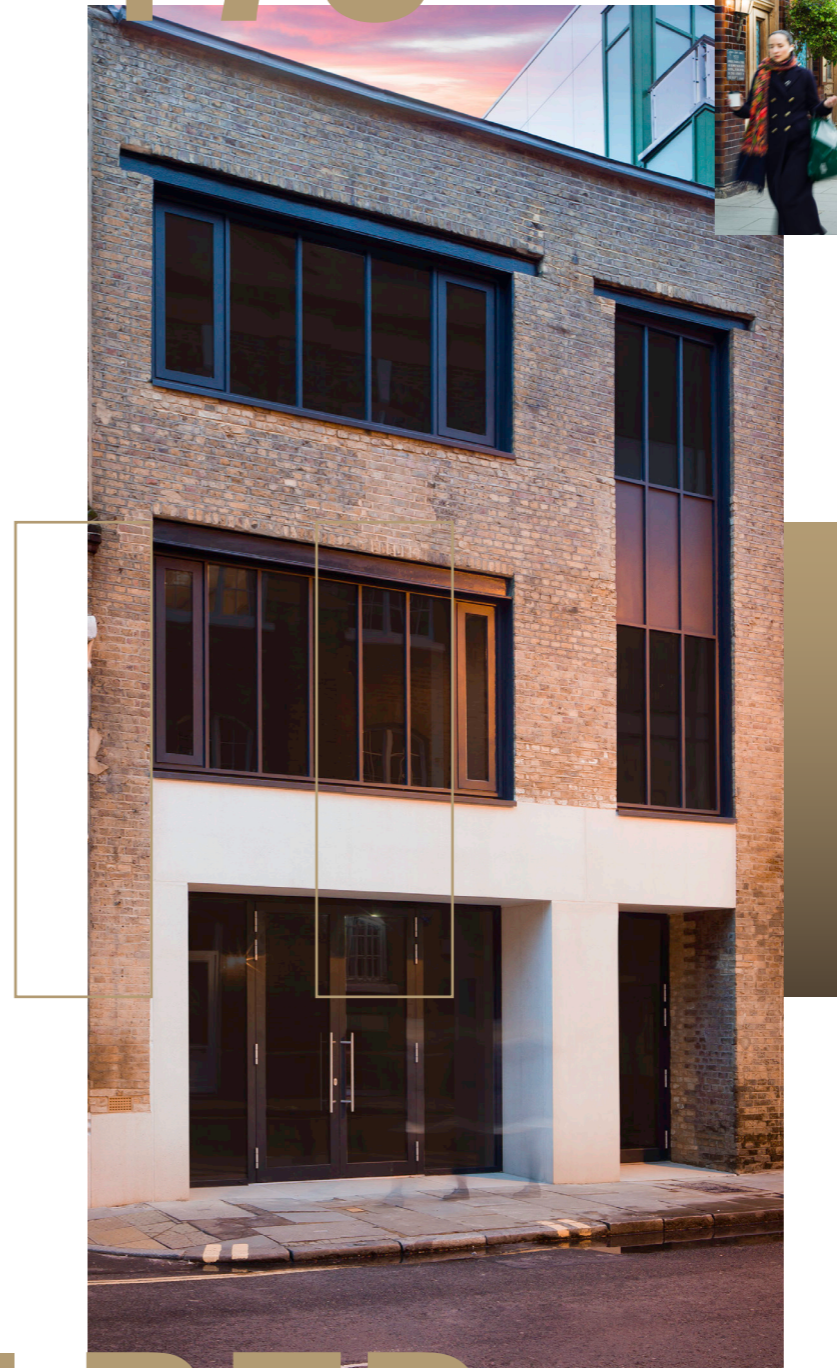


## ALIVE WITH BOOMING BUSINESS

This buzzing neighbourhood has no shortage of attractions to draw in the crowds. Surround yourself with names such as White Cube Gallery, Franca Manca, Pizarro, José, Watch House Coffee, Baccala, Café Murano, Tanner & Co, The Hide and The Woolpack Pub.



# 176 - 178



## A PROPERTY PRIMED TO REALISE YOUR POTENTIAL

An expansive space boasting one of the largest floor plates on the street, The Bakery offers a rare opportunity for an occupier with A1, A3, A4, B1, B2 and B8 use.

## THE SPOTLIGHT'S ON YOU

The property has been extensively refurbished with 3 floors ready to take its future resident forwards. Benefiting from full extraction and three phase power, it's set up to be brought to life with a number of different uses. From a bakery to a coffee roastery, restaurant, gym, chocolatier, bar or concept store, there's a whole host of possibilities to explore.



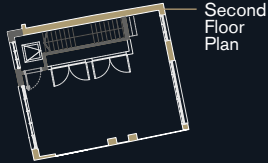
# BERMONDSEY

# 176 - 178

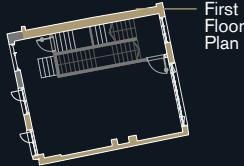
176 –  
178

THE PLACE TO BE  
**BERMONDSEY STREET**

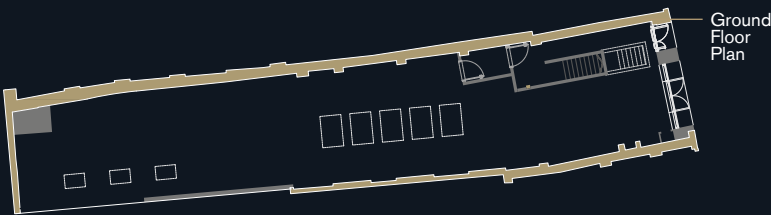
BAR  
RESTAURANT  
BREWERY  
DISTILLERY  
ROASTERY  
BAKERY



Second Floor Plan



First Floor Plan



Ground Floor Plan

176 –  
178

176/178  
Bermondsey Street

Approx Gross  
Internal Areas:

	Sq m	sqft
Ground	258.8	2785
First	59.5	637
Second	59.7	642

Rent:  
Upon Application

Contact Details:

**Oliver Muers-Raby**  
olliemr@ormeproperty.co.uk  
0207 499 0440

**Dan Rogers**  
daniel@restaurant-property.co.uk  
020 7935 2225

**Orme**  
PROPERTY

**R** RESTAURANT  
PROPERTY  
INTERNATIONAL LEISURE SPECIALISTS

BERMONDSEY STREET  
LONDON BOROUGH OF SOUTHWARK  
SE1



BER-  
MOND  
SEY

Misrepresentations Act 1967 and Property Misdescriptions Act 1991 - Orme Retail, their clients and any joint agents, give notice that: (i) These particulars do not form any part of any offer or contract and must not be relied upon as statements of representations of fact. (ii) No person in the employment of the agent(s) has any authority to make or give any representation or warranty whatever in relation to this property. (iii) Floor areas, measurements or distances given are approximate. Unless otherwise stated, any rents or outgoings quoted are exclusive of VAT. (iv) Any descriptions given of the property cannot be taken to imply it is in good repair, has all necessary consents, is free from contamination, or that the services and facilities are in working order. Interested parties are advised to carry out their own investigations as required.