

Strathleven House

OFFICES TO LET

Address

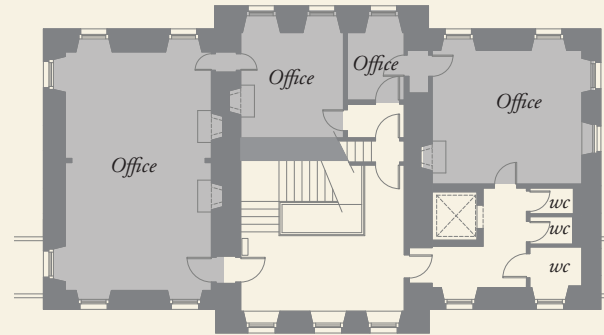
Strathleven House
Vale of Leven Industrial Estate
Dumbarton
G82 3PD

Specification

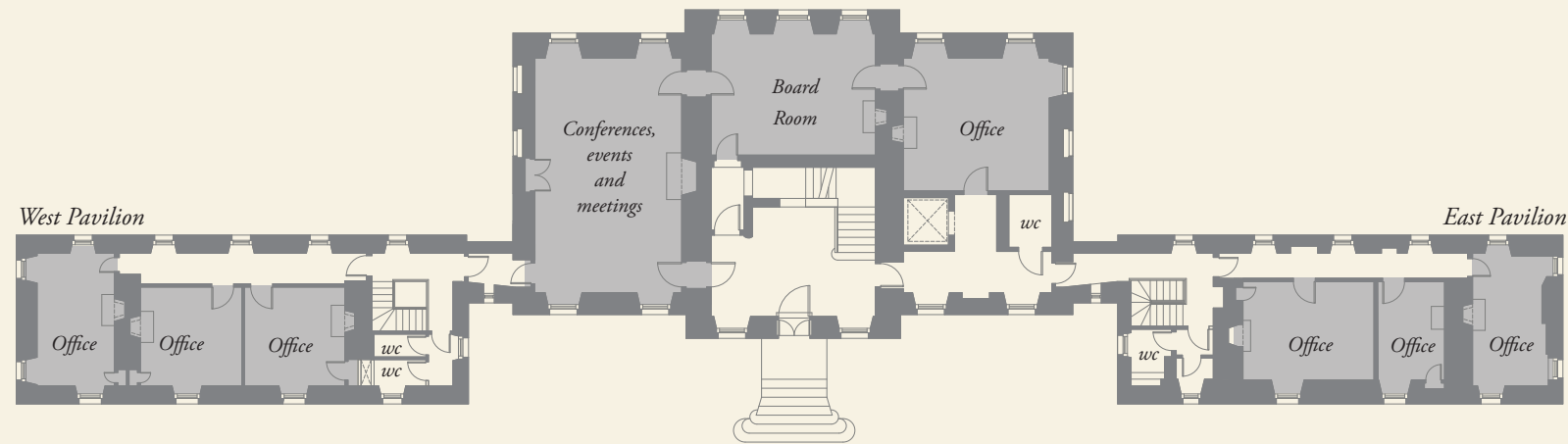
Integrated Cat V cabling
Lift serving all floors
Phone/data points per desk space
Central patch panel
Redcare linked alarm service
Flexible underfloor heating

Features

- Individual offices available to let from 70 sq.ft (6.5 m²)
- Secretarial support services available to 625 sq.ft. (58 m²)
- Conference, meeting and events spaces to hire
- Mailbox services available
- Communal tenants kitchen and break out space
- Private car parking adjacent to building



First Floor Plan



Ground Floor Plan



Background Information

Strathleven House is a category A-listed Palladian country house on the outskirts of Dumbarton. Surrounded by scenic woodland, it is part of the Vale of Leven industrial estate and is only 30 minutes from Glasgow by car.

The building dates from 1700 and is considered to be the first country house built in Scotland in the Palladian style. After becoming redundant and falling into disrepair, the building was purchased by Scottish Historic Buildings Trust in 1993 who embarked on an extensive restoration programme. The £2.4 million project was completed in 2000 and now offers 21 serviced office suites of varying sizes and two conference/event/meeting rooms with exceptional period features.

Whether your interest is to rent an office space within the building, or to hire one of the conference or event rooms, please contact our Property Manager to discuss your requirements.

T 01389 750005

Space Available

Office Accommodation

Over four storeys, the property includes 21 office suites ranging from small individual rooms to large open plan units. All offices have access to a communal kitchen, benefit from reception services and have Cat V cabling.

Strathleven House is a popular choice for organisations and businesses looking for exceptional office accommodation within a unique historic building.

Conferences and Events

There are two meeting spaces which can be hired for part-day or full day conferences, meetings or special events. These include the stately Oak Room with fine historic paneling (max 40 person capacity) and the Board Room (max 18 person capacity). Both rooms have flexible layout arrangements and attractive views of the surrounding landscape.

A range of conference packages are available to suit individual needs. On site parking is available for delegates and a range of equipment can be hired at competitive rates, including an overhead projector with screen and a laptop with internet access.

